

For Lease

1235 Commerce Road

Morrow, Georgia 30260

159,666 SF



NICK PEACHER
SENIOR VICE PRESIDENT
nicholas.peacher@streamrealty.com
404.962.8650



ANDREW ASHMORE
SENIOR ASSOCIATE
andrew.ashmore@streamrealty.com
404.962.8627

No warranty or representation, expressed or implied, is made as to the accuracy of the information contained herein, and same is submitted subject to error and omissions.

1235 Commerce Road

Morrow, Georgia 30260

159,666 SF



AVAILABILITY HIGHLIGHTS - SUITE D

Available	5,740 SF
Office	4,880 SF
Ceiling Height	15'
Loading	1 Drive-In Door
Lighting	LED



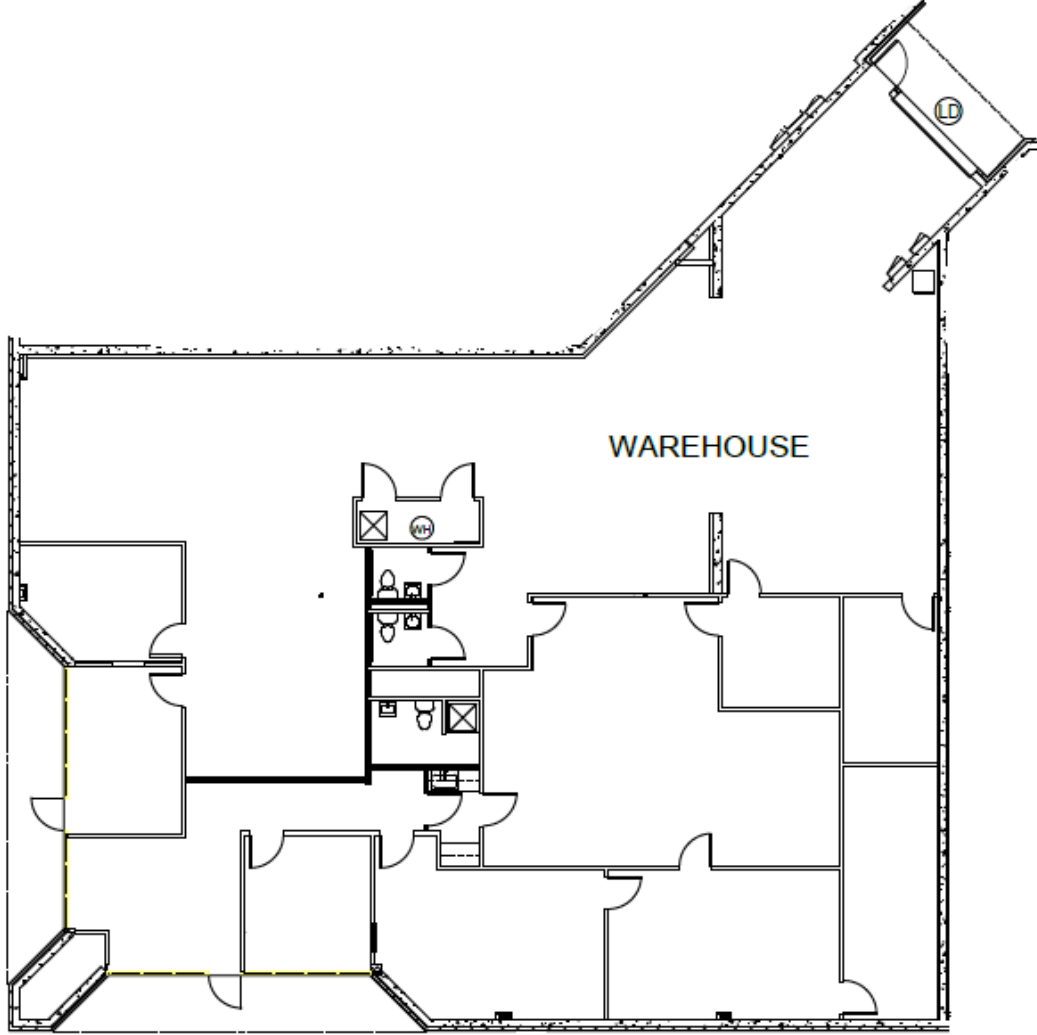
LOCATION:

- Superior access to I-75
- Superior access to I-285
- Superior access to air cargo terminal and Port of Savannah

1235 Commerce Road

Morrow, Georgia 30260

159,666 SF



Suite D
5,740 SF

For Lease

1235 Commerce Road

Morrow, Georgia 30260

159,666 SF



No warranty or representation, expressed or implied, is made as to the accuracy of the information contained herein, and same is submitted subject to error and omissions.