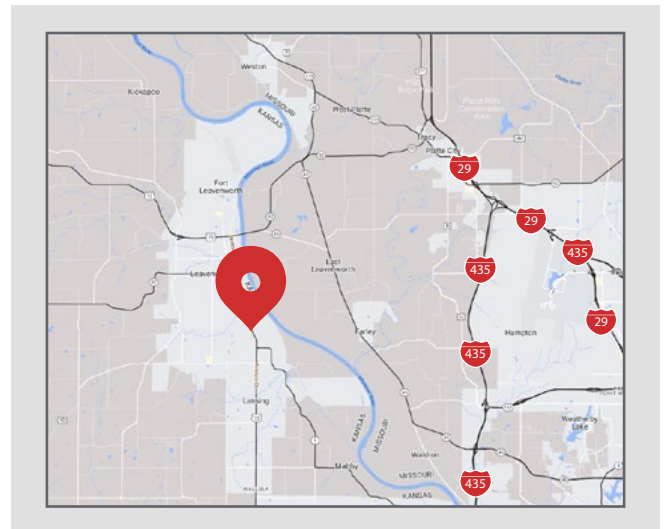




3550 South 4th Street

Leavenworth, Kansas

- On campus medical office space
- Up to 4,347 USF available
- On-site outpatient surgery facility
- Competitive full service rental rate
- Tenant finish / remodeling allowances
- Outstanding visibility, access & parking



Available Spaces

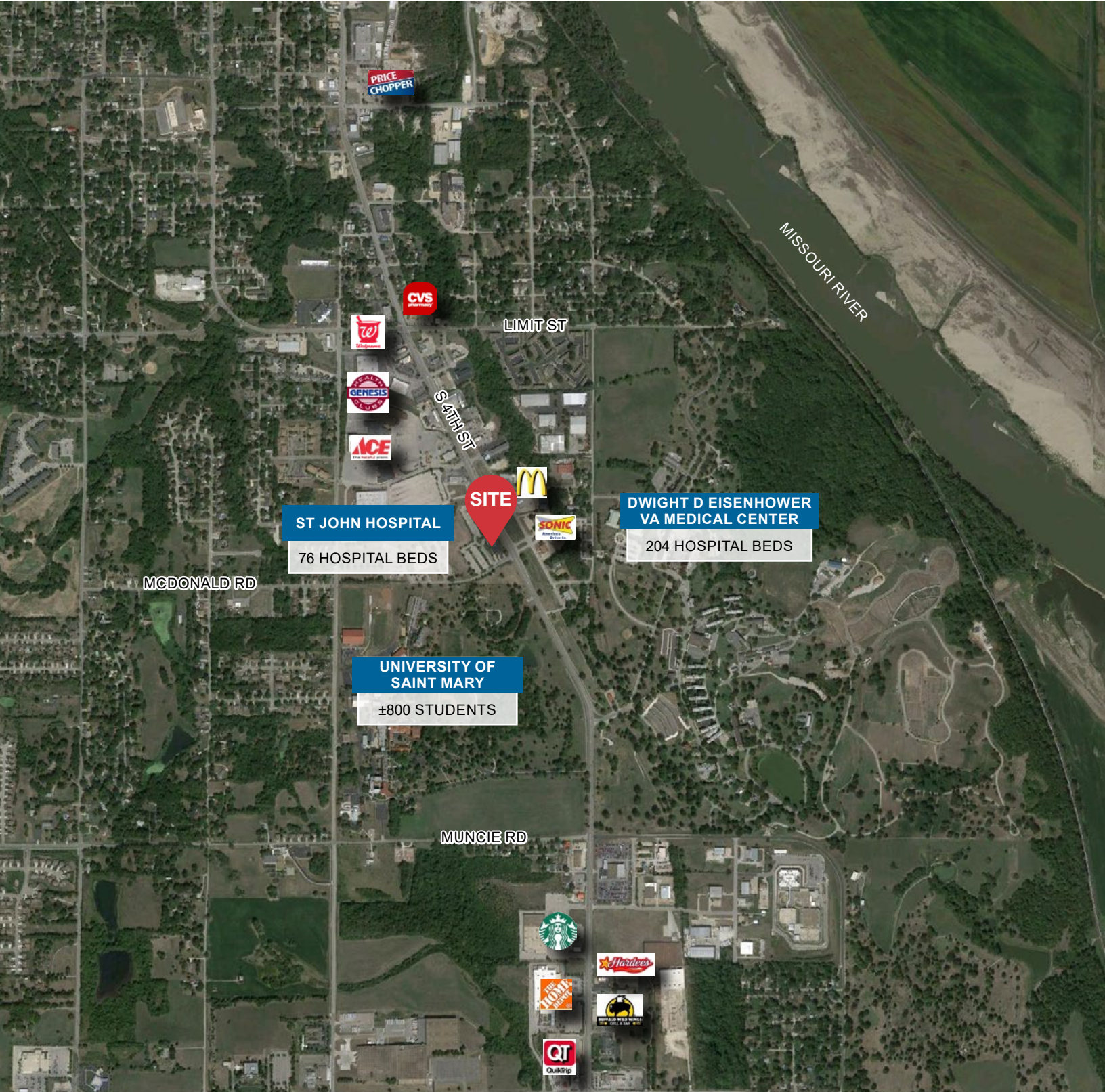
SUITE	SIZE	COMMENTS
120	4,347 SF	Medical Space
145	586 SF	Warm Shell
150	1,051 SF	Medical Space
270	1,232 SF	Warm Shell

For more information:

Mike Sonnenberg, CCIM

+1 913 956 5812 • mike@nai-heartland.com

Available For Lease
Saint John Pavilion
Leavenworth, KS



NO WARRANTY OR REPRESENTATION, EXPRESS OR IMPLIED, IS MADE AS TO THE ACCURACY OF THE INFORMATION CONTAINED HEREIN, AND THE SAME IS SUBMITTED SUBJECT TO ERRORS, OMISSIONS, CHANGE OF PRICE, RENTAL OR OTHER CONDITIONS, PRIOR SALE, LEASE OR FINANCING, OR WITHDRAWAL WITHOUT NOTICE, AND OF ANY SPECIAL LISTING CONDITIONS IMPOSED BY OUR PRINCIPALS NO WARRANTIES OR REPRESENTATIONS ARE MADE AS TO THE CONDITION OF THE PROPERTY OR ANY HAZARDS CONTAINED THEREIN ARE ANY TO BE IMPLIED.

4400 College Boulevard, Suite 170
Overland Park, Kansas 66211
+1 913 362 1000

nai-heartland.com