

Multi-Use
Office/Warehouse
Available

Property Address:

499 Bonham Avenue
Columbus, Ohio 43211

Submitted By:

Corey M Hoover

Cell | 614-787-4252 |

Corey_hoover@sbcglobal.net

RE/MAX Commercial
Easton Way #110
Columbus, Ohio 43219



Offering Terms

Building Summary

Property Type **Office/warehouse**
Location **499 Bonham Avenue**
 Columbus, Ohio 43211
Parcel # **010-045925-00**

499 Bonham is a **4,500SF Office/Warehouse**. Approximately **3,200 SF of Warehouse** space and **425 SF in Office**. Front access into the building. There is **3, 10x10 drive in doors, 12' to 13' clear height in warehouse**

Property Size: **0.25 Acres (approx.)**

Offer Procedure

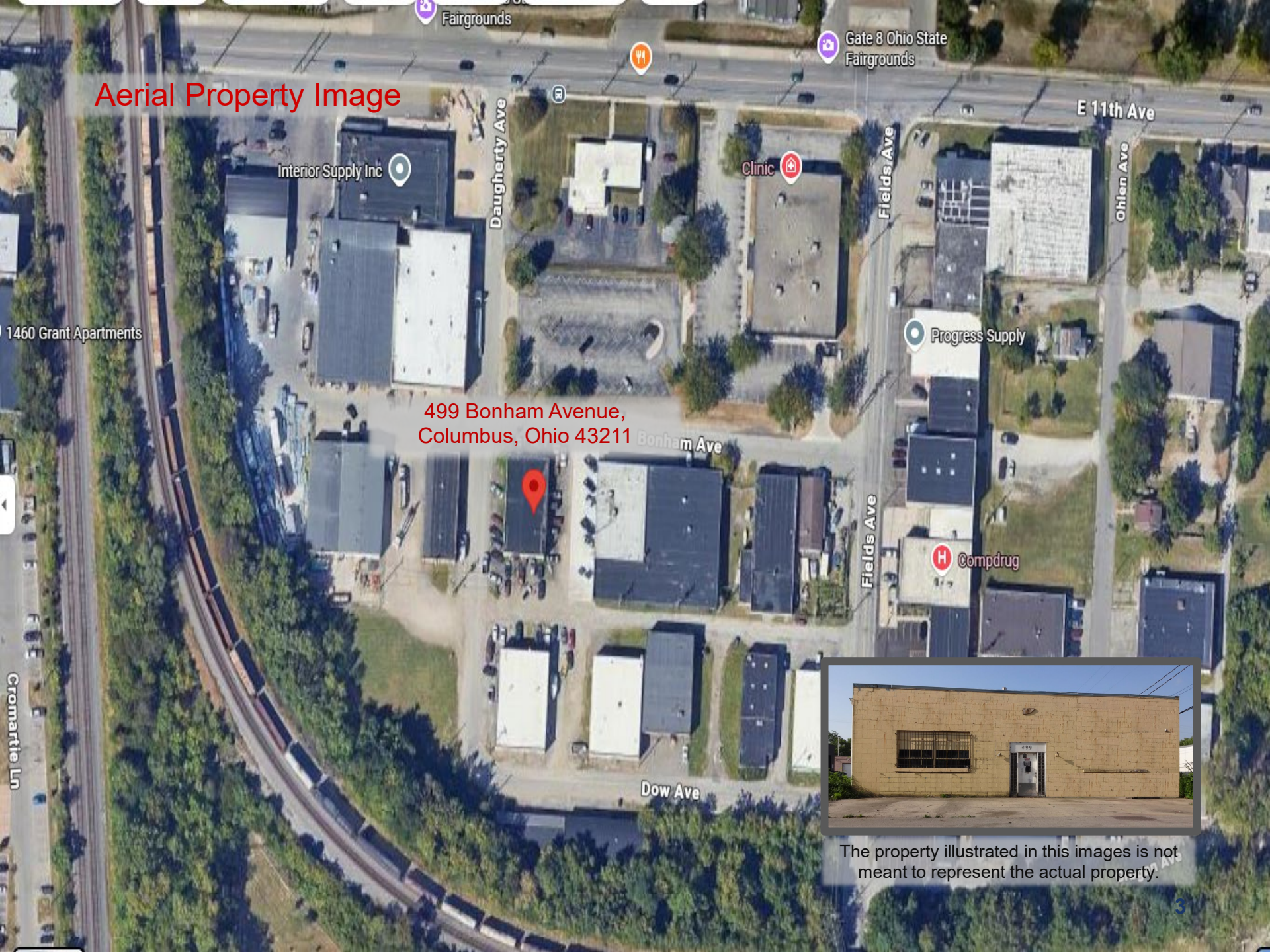
Groups wishing to submit a proposal are to submit a non-binding Letter of Intent. The terms shall require:

- Proposal description
- Proposed Terms.
- Financial background.
- Description of business.

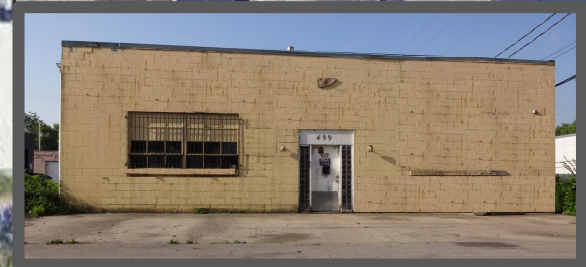
Offers should be delivered to the attention of:

Corey M. Hoover
corey_hoover@sbcglobal.net
Cell | 614-787-4252 |

Aerial Property Image



499 Bonham Avenue,
Columbus, Ohio 43211



The property illustrated in this images is not meant to represent the actual property.

Property Location and Overview

499 Bonham Avenue, Columbus, Ohio 43211. Is a 4,500 SF Office/Warehouse.

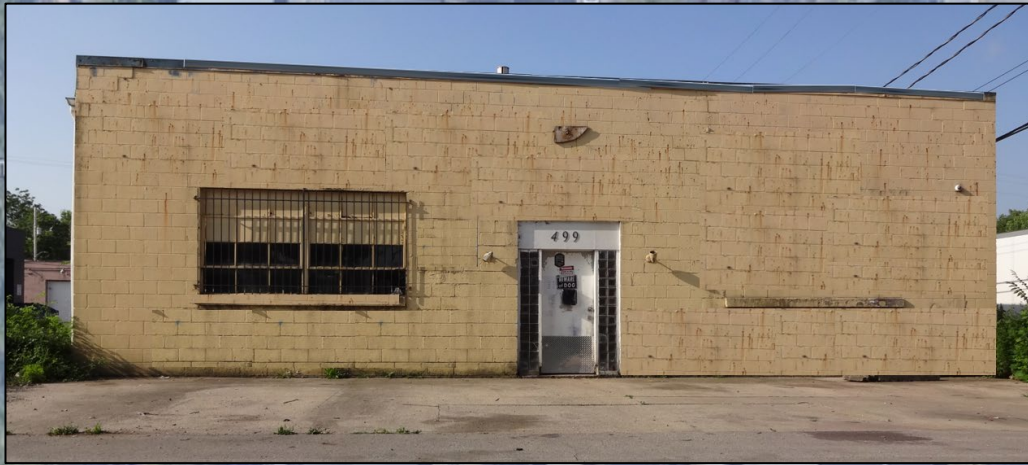
Located in the Milo-Grogan industrial area, within the city limits of Columbus, Ohio, in Franklin County, neighboring other commercial businesses. The property is located only 3 minutes to Interstate 71 running north and south and 3 miles to Interstate 670, that cuts through the city and merges with Interstate 70. It is a mere 3.5 miles, 9 minutes to downtown Columbus.

With close proximity to several major highways, this site is easily accessible for commerce moving across the U.S., from the North, South, East, or West.

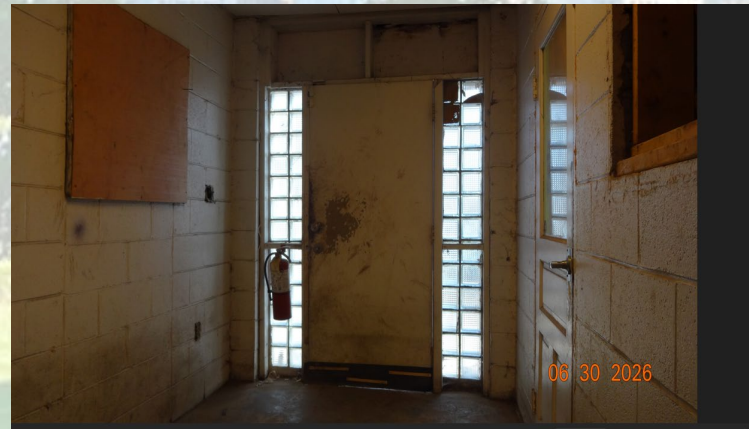
The City of Columbus is committed to expanding its commercial and industrial tax base to secure a strong financial foundation for the community. Columbus offers a wide range of incentives to encourage investment in the community. This area is ideal for multi-use development.

The site can accommodate numerous business opportunities. This is a unique opportunity to join the Columbus community in this quality standalone asset located in Milo-Grogan.

Exterior Property Views



Interior Space and Exterior Access



Interior Space and Accommodations



Columbus Ohio

Cost of Living
10% lower
than national
average

Columbus is Ohio's state capital. The city's Scioto Mile is a string of parks on both sides of the Scioto River, with a huge interactive fountain and trails. On the west bank, the COSI science center offers hands-on exhibits and planetarium. downtown, the Columbus Museum of Art includes American and European paintings and a sculpture garden.

The German Village area has restored brick houses built by 1800s settlers. Columbus, Ohio, boasts a strong and diverse commercial landscape, with a focus on education, insurance, banking, technology, and healthcare, and is known for its growing tech scene and strategic location.



2024 Population
913,175 (2023)
2023 American Community Survey



Employment
Employment Rate **96.1%**



Business and Economy
In 2022 **13,685** All Employer Firms
2,600 Women owned



Median Income
\$39,123 USD (2023)

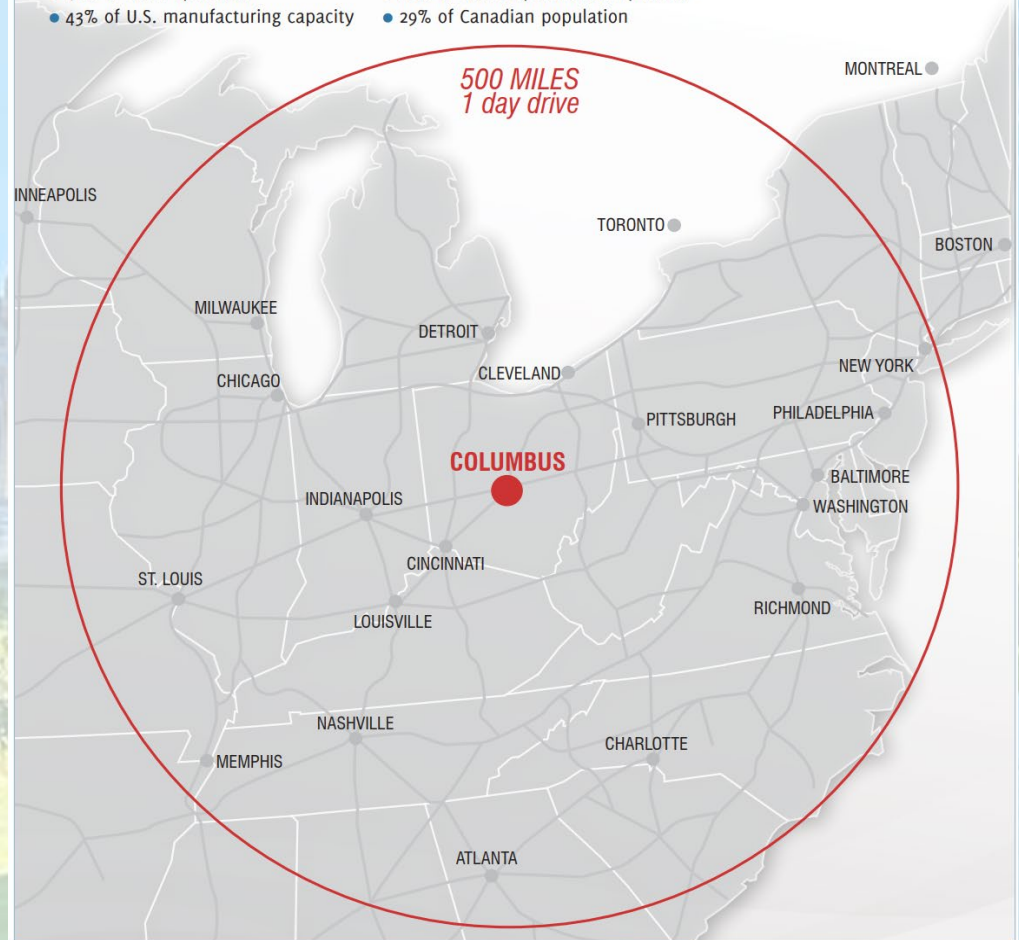
Commerce Area Coverage

This illustration shows the commerce area coverage within 500 mile radius of Columbus, OH.

500 Mile Radius

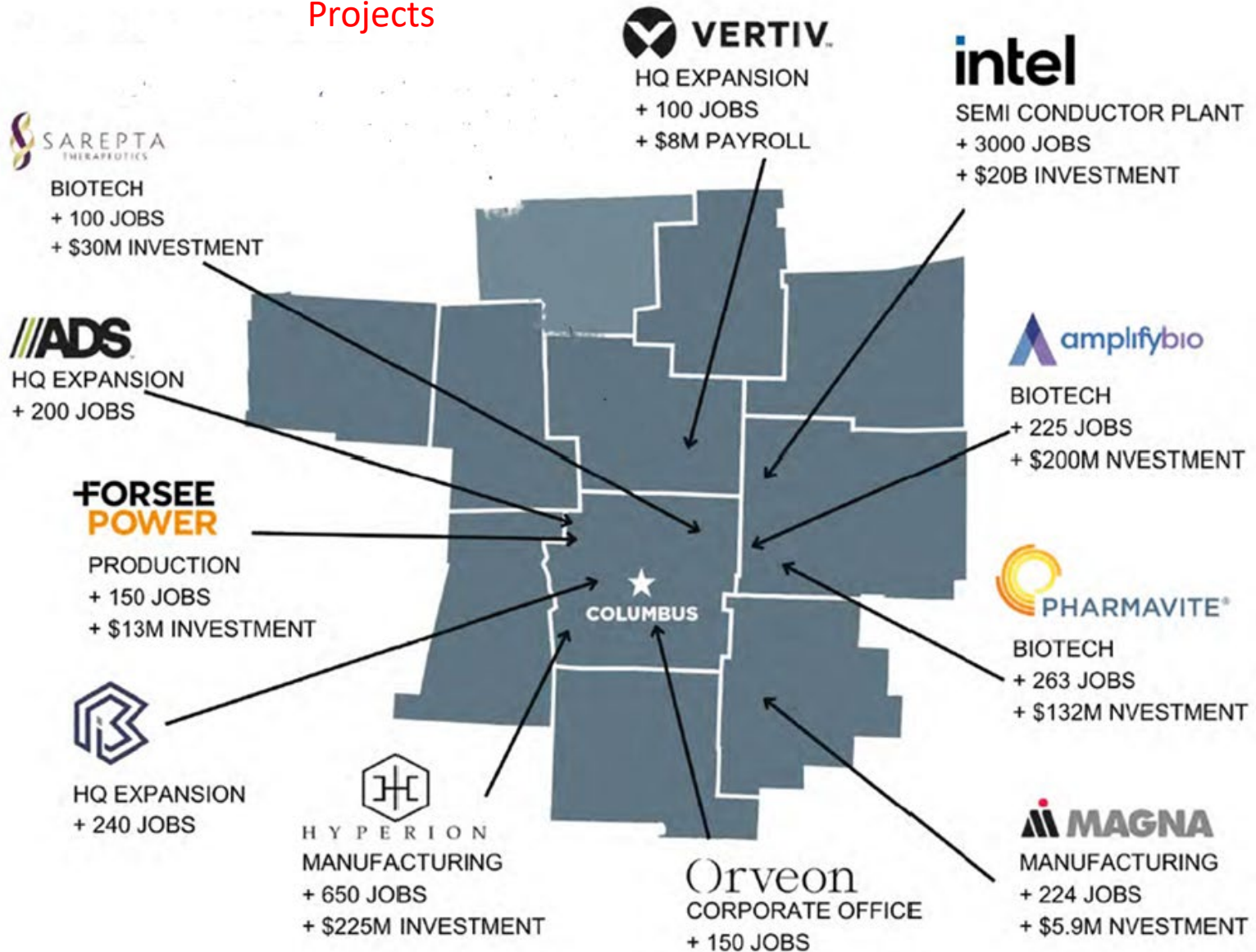
Columbus enjoys one of the best locations in the entire United States. Columbus is at the crossroads of interstate highways I-70 and I-71, connecting to the Interstate grid. The area has more than 140 trucking companies, 30 offering nationwide service. More than 15,000 truck movements originate or terminate daily in Greater Columbus. Greater Columbus is within a one-day truck drive or one-hour flight of:

- 41% of U.S. Population
- 80% of U.S. Corporate Headquarters
- 43% of U.S. manufacturing capacity
- 29% of Canadian population

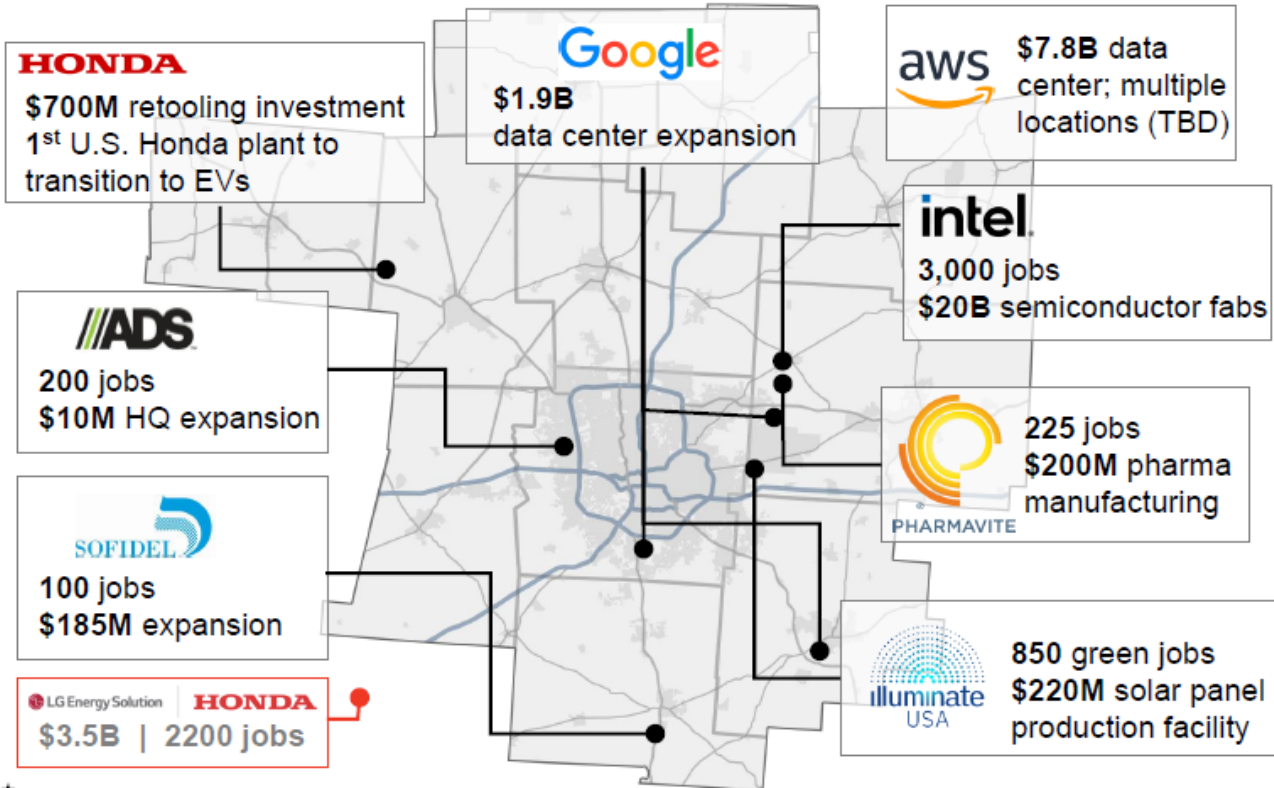


Columbus Economic Development • 150 S. Front St. • Columbus, OH 43215 614.645.8616 www.columbus.gov

Regional Investment Projects



NOTABLE PROJECTS ANNOUNCED 22/24



12,400+
New Jobs

\$1.06B+
New Payroll

\$32B+
Capital Investment

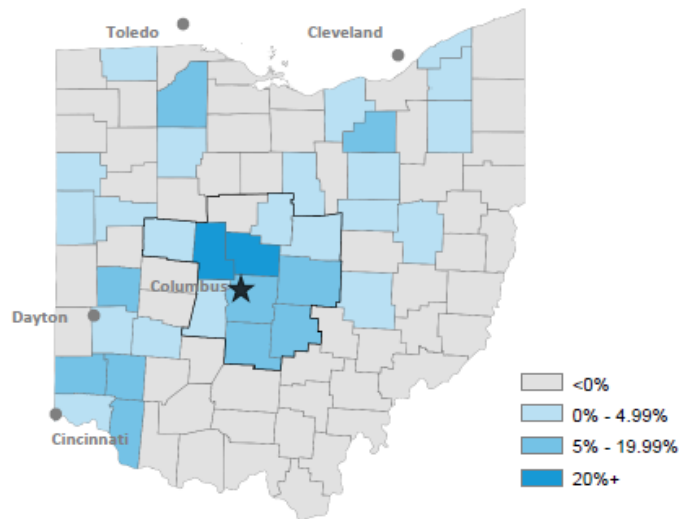


Source: One Columbus; total jobs, payroll, and capital investment for all One Columbus projects January 1, 2022 – July 31, 2024; One Columbus projects only, does not encompass all market activity.

COLUMBUS REGION DRIVING OHIO'S GROWTH

All of Ohio's population growth in the past decade can be attributed to net gains from Columbus Region counties, with the region adding over 218,000 people and the rest of the state collectively losing 13,000.

Population growth by county (2012 - 2022)



#1	Union	26.6%
#2	Delaware	24.9%
#3	Warren	14.7%
#4	Fairfield	10.4%
#5	Franklin	10.4%
#6	Licking	8.1%
#7	Miami	6.9%
#8	Pickaway	6.6%

Of the top 10 fastest growing counties in Ohio in the past decade, 6 are in the Columbus Region.



Sources: U.S. Census Bureau, Population Estimates, 2012-2022.

Property Tours

Interested parties will have the opportunity to visit the properties via pre-scheduled tours.

We invite you to call to discuss this property. We look forward to hearing from you and will schedule a walk through at your convience.

Please do not contact the owner. All tours will be coordinated through Corey M. Hoover, of RE/MAX Commercial.

Contact Corey to schedule a tour at your convience.

Corey M. Hoover
corey_hoover@sbcglobal.net
Cell | 614-787-4252

Thank you,



Corey M Hoover | Commercial Sales | Cell: (614) 787-4252
corey_hoover@sbcglobal.net



4349 Easton Way #110
Columbus, Ohio 43219

Sources: City of Columbus,
FranklinCountyohio.gov, Google, Wikipedia

8/13/2024

15

Confidentiality Agreement

All materials and information received or derived from RE/MAX Commercial (hereinafter collectively referred to as “RE/MAX COMMERCIAL”), its directors, officers, agents, advisors, affiliates and/or any third party sources are provided without representation or warranty by RE/MAX COMMERCIAL its directors, officers, agents, advisors, or affiliates as to completeness, veracity, or accuracy, condition of the property, compliance or lack of compliance with applicable governmental requirements, suitability, financial performance of the property, projected financial performance of the property for any party’s intended use or any and all other matters. Neither RE/MAX COMMERCIAL its directors, officers, agents, advisors, or affiliates makes any representation or warranty, express or implied, as to the accuracy or completeness of any materials or information provided, derived, or received. Materials and information from any source, whether written or verbal, that may be furnished for review are not substitute for a party’s active conduct of its own due diligence to determine these and other matters of significance to such party. RE/MAX COMMERCIAL will not investigate or verify any such matters or conduct due diligence for a party unless otherwise agreed in writing.

ALL PARTIES SHALL CONDUCT THEIR OWN INDEPENDENT INVESTIGATION AND DUE DILIGENCE.

Any party contemplating purchase, under contract or in escrow for a transaction is urged to verify all information provided and to conduct their own inspections and investigations, which may include appropriate third party/independent professionals selected by such party. All financial data should be verified by the party by obtaining and reading the applicable documents and reports and then consulting with appropriate independent professionals as needed. RE/MAX COMMERCIAL makes no warranties and/or representations regarding the veracity, completeness, or relevance of any financial data or assumptions. RE/MAX COMMERCIAL does not serve as a financial advisor to any party regarding any proposed transaction. All data and assumptions regarding financial performance, including that used for financial modeling purposes, may differ from actual data or performance. Any estimates of market rents and/or projected rents that may be provided to a party do not necessarily mean that rents can be established at or increased to that level. Parties must evaluate any applicable contractual and governmental limitations as well as market conditions, vacancy factors and other issues in order to determine rents from or for the property.

Legal questions should be discussed by the party with an attorney. Tax questions should be discussed by the party with a certified public accountant or tax attorney. Title questions should be discussed by the party with a title officer or attorney. Questions regarding the condition of the property and whether the property complies with applicable governmental requirements should be discussed by the party with appropriate engineers, architects, contractors, other consultants and governmental agencies.