

NORTHWEST INDUSTRIAL PARK

12,000 SF AVAILABLE

9604 W TIDWELL RD ▪ HOUSTON, TX 77041



For leasing information, please contact Stream Realty Partners
GARRET GEACONE | 713.300.0232 | garret.geaccone@streamrealty.com
BOONE SMITH | 713.300.0267 | boone.smith@streamrealty.com
JACK RATHE | 713.300.0298 | jack.rathe@streamrealty.com
www.streamrealty.com

NORTHWEST INDUSTRIAL PARK

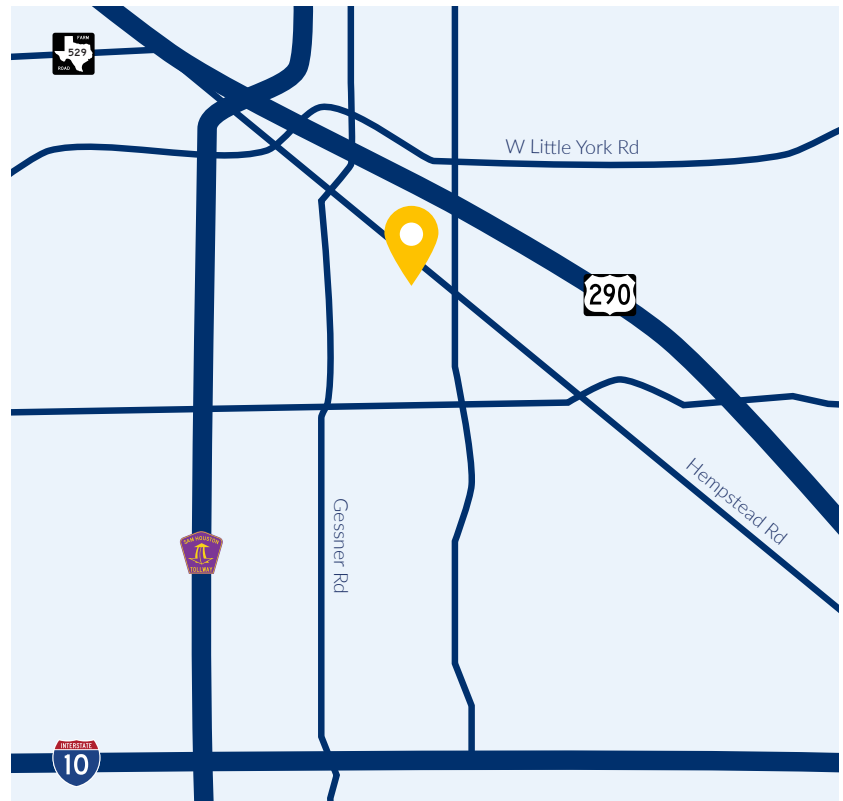
12,000 SF AVAILABLE

9604 W TIDWELL RD ▪ HOUSTON, TX 77041



BUILDING FEATURES

- Stand-alone building
- Easy access to Hempstead Highway, US-290, Beltway 8, and I-10.
- Fully sprinklered
- Tilt wall construction



For leasing information, please contact Stream Realty Partners
GARRET GEACONE | 713.300.0232 | garret.geaccone@streamrealty.com
BOONE SMITH | 713.300.0267 | boone.smith@streamrealty.com
JACK RATHE | 713.300.0298 | jack.rathe@streamrealty.com
www.streamrealty.com

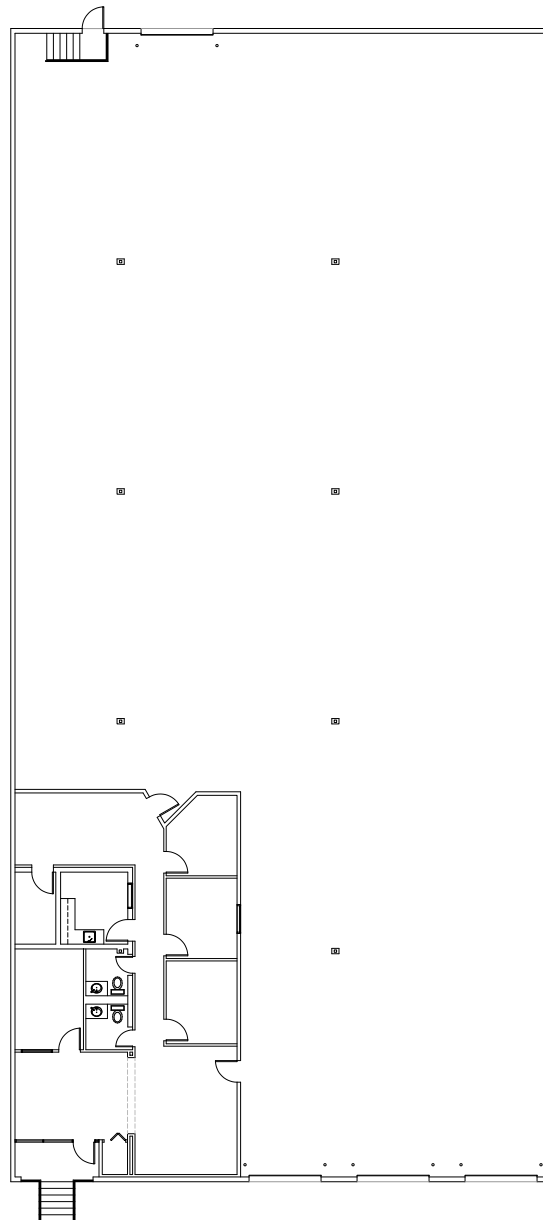
NORTHWEST INDUSTRIAL PARK

12,000 SF AVAILABLE

9604 W TIDWELL RD ▪ HOUSTON, TX 77041

SUITE FEATURES

- 12,000 SF available
 - 1,606 SF office
 - 10,394 SF warehouse
- 23' Clear height
- 3 dock-high loading doors



For leasing information, please contact Stream Realty Partners
GARRET GEACCONO | 713.300.0232 | garret.geaccone@streamrealty.com
BOONE SMITH | 713.300.0267 | boone.smith@streamrealty.com
JACK RATHE | 713.300.0298 | jack.rathe@streamrealty.com
www.streamrealty.com