

[Click to view property video](#) 



East Las Olas Blvd

The Plaza at Las Olas

Rental Rate

\$40.00
NNN psf

\$24.76
Op. Exp. psf

301 E Las Olas Blvd
Fort Lauderdale, FL 33301

Greg Martin
Principal, Managing Director
(954) 903-1815
greg.martin@avisonyoung.com

Justin Cope, SIOR
Principal
(954) 903-3701
justin.cope@avisonyoung.com

Lisa Blumer, CCIM
Principal
(954) 903-3703
lisa.blumer@avisonyoung.com

**AVISON
YOUNG**

© 2025. Avison Young. Information contained herein was obtained from sources deemed reliable and, while thought to be correct, have not been verified. Avison Young does not guarantee the accuracy or completeness of the information presented, nor assumes any responsibility or liability for any errors or omissions therein. Some imagery may have been edited using AI tools for visualization purposes.



Amenities



Walkable Location

Prime Las Olas Blvd. address in Fort Lauderdale's financial, retail, and entertainment district.



Modern Features & Security

Building signage available, manned lobby, reserved covered parking, and EV charging stations.



Onsite Amenities

Dining options including YOLO, O Lounge, Java & Jam, plus Valley Bank and BankUnited.



Transportation Access

Four blocks from the Brightline station, minutes to Port Everglades, I-595, I-95, and only 10 minutes to FLL Airport.



Sustainability

LEED® Gold certified, reflecting efficiency and environmental responsibility.



Greg Martin

Principal, Managing Director
(954) 903-1815
greg.martin@avisonyoung.com

Justin Cope, SIOR

Principal
(954) 903-3701
justin.cope@avisonyoung.com

Lisa Blumer, CCIM

Principal
(954) 903-3703
lisa.blumer@avisonyoung.com

**AVISON
YOUNG**



Gallery



Greg Martin
Principal, Managing Director
(954) 903-1815
greg.martin@avisonyoung.com

Justin Cope, SIOR
Principal
(954) 903-3701
justin.cope@avisonyoung.com

Lisa Blumer, CCIM
Principal
(954) 903-3703
lisa.blumer@avisonyoung.com

**AVISON
YOUNG**

Availability Suite 200

Available January 1, 2027 | 2,866 SF



Greg Martin

Principal, Managing Director

(954) 903-1815

greg.martin@avisonyoung.com

Justin Cope, SIOR

Principal

(954) 903-3701

justin.cope@avisonyoung.com

Lisa Blumer, CCIM

Principal

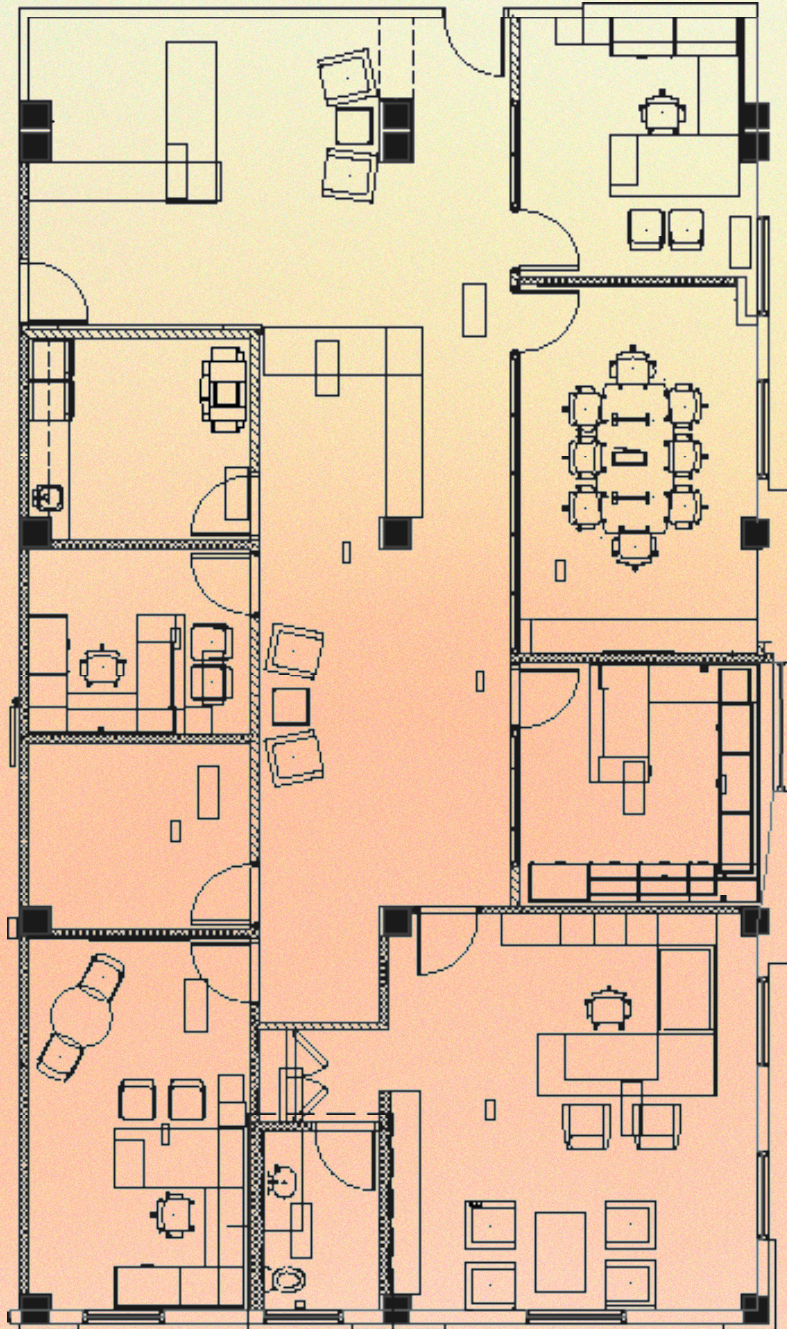
(954) 903-3703

lisa.blumer@avisonyoung.com

**AVISON
YOUNG**

Availability Suite 230

Available January 1, 2027 | 3,043 SF



Greg Martin

Principal, Managing Director

(954) 903-1815

greg.martin@avisonyoung.com

Justin Cope, SIOR

Principal

(954) 903-3701

justin.cope@avisonyoung.com

Lisa Blumer, CCIM

Principal

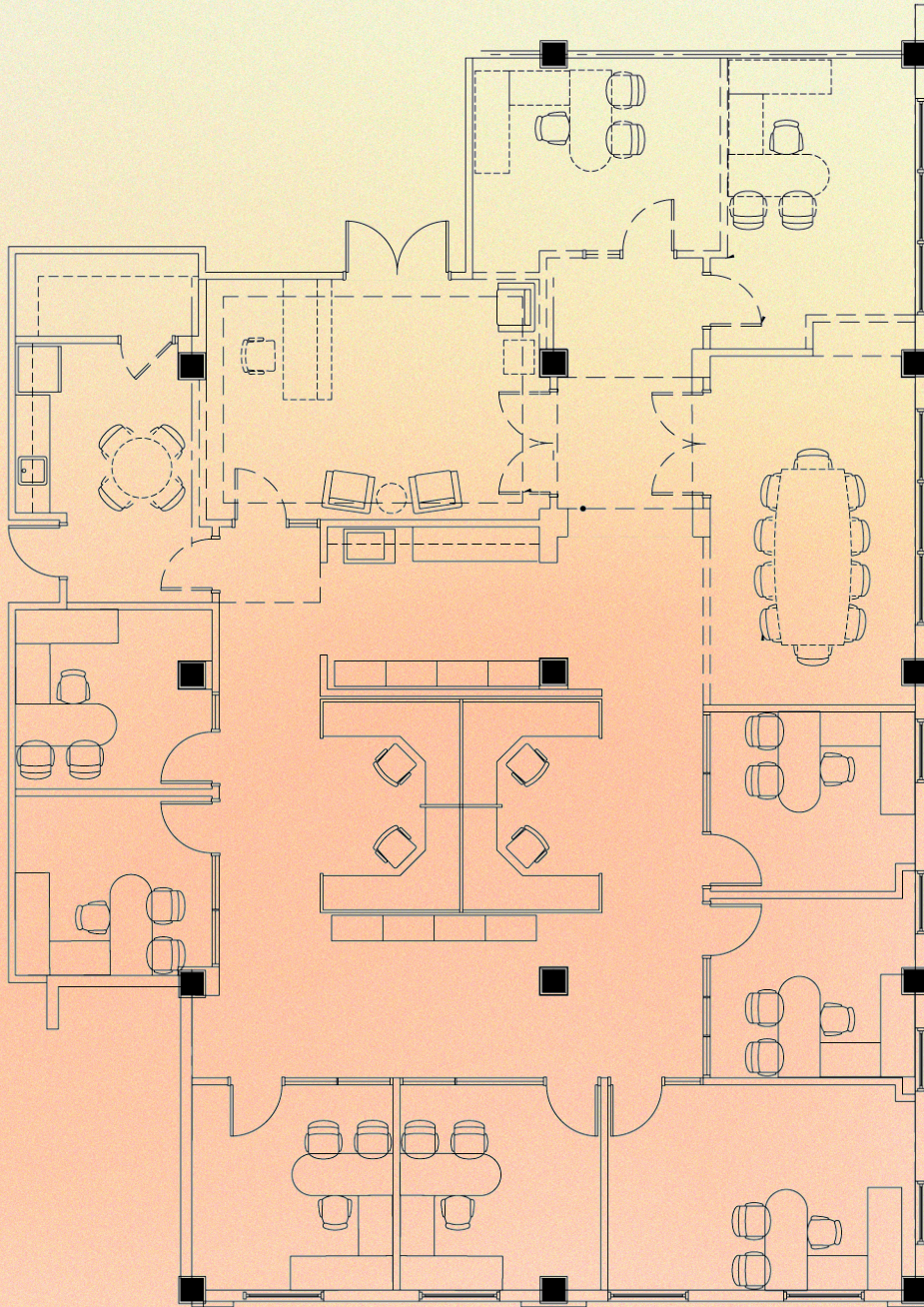
(954) 903-3703

lisa.blumer@avisonyoung.com

**AVISON
YOUNG**

Availability Suite 250

Available January 1, 2027 | 3,879 SF



Greg Martin

Principal, Managing Director

(954) 903-1815

greg.martin@avisonyoung.com

Justin Cope, SIOR

Principal

(954) 903-3701

justin.cope@avisonyoung.com

Lisa Blumer, CCIM

Principal

(954) 903-3703

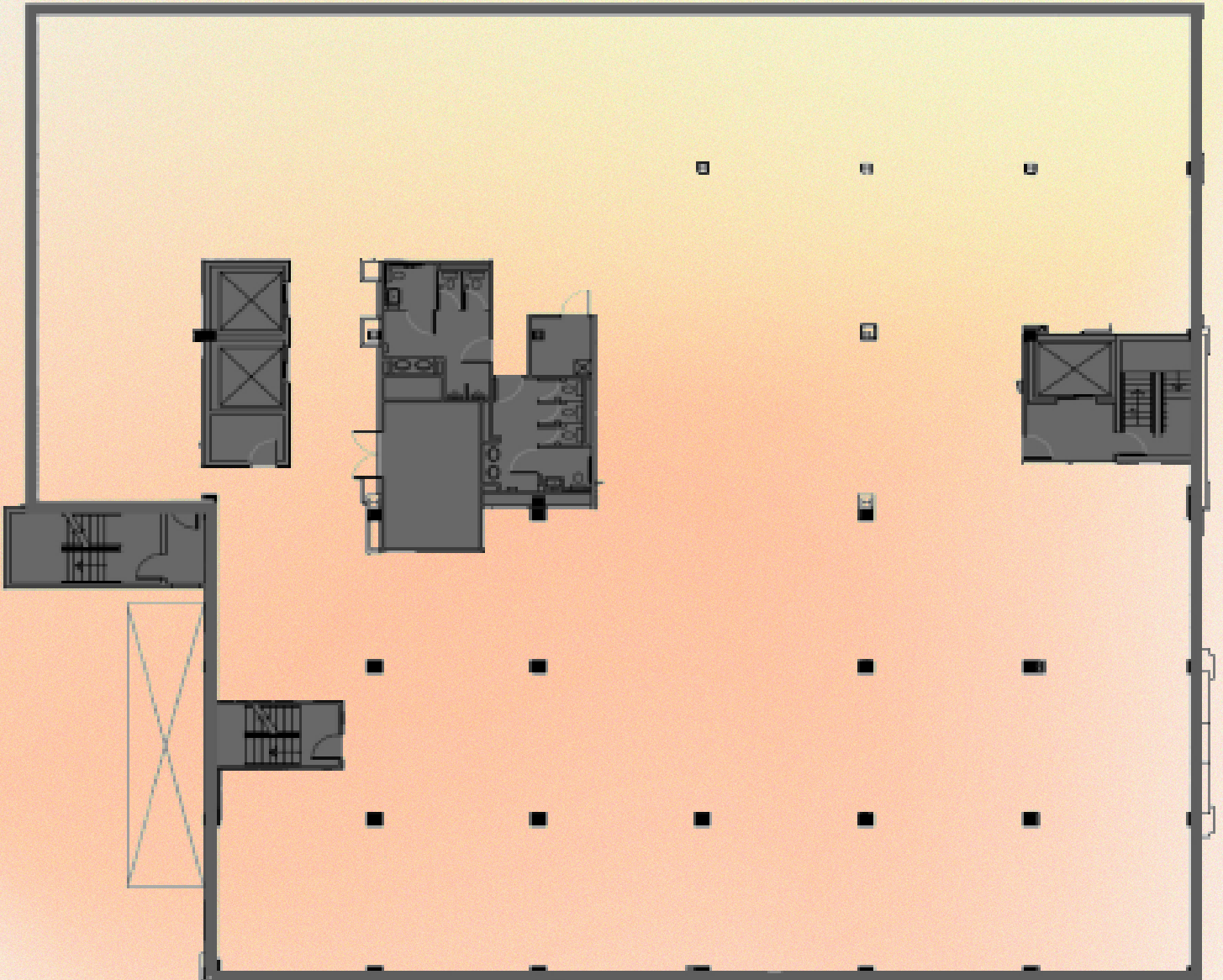
lisa.blumer@avisonyoung.com

**AVISON
YOUNG**

Availability Suite 400

First Generation | 14,994 SF

[Click to view 3D rendering](#) 



Greg Martin

Principal, Managing Director
(954) 903-1815

greg.martin@avisonyoung.com

Justin Cope, SIOR

Principal
(954) 903-3701

justin.cope@avisonyoung.com

Lisa Blumer, CCIM

Principal
(954) 903-3703

lisa.blumer@avisonyoung.com

**AVISON
YOUNG**



Area Overview



Banks

- Valley Bank
- Citi
- Chase
- Bank of America
- Truist
- Fifth Third Bank

Restaurants

- Moxies
- Eddie V's Prime Seafood
- Del Frisco's Grille
- Fleming's
- Fogo de Chao
- YOLO
- Lobster Bar Sea Grille
- The Cheesecake Factory

Miscellaneous

- Publix
- Hyatt

Greg Martin

Principal, Managing Director
 (954) 903-1815
greg.martin@avisonyoung.com

Justin Cope, SIOR

Principal
 (954) 903-3701
justin.cope@avisonyoung.com

Lisa Blumer, CCIM

Principal
 (954) 903-3703
lisa.blumer@avisonyoung.com

