

## PROPERTY DETAILS

- Available: ±900 SF
- Rate: \$1.98 / SF MG
- Zoning: WCOP
- Sublease until 6/30/27
- Landlord pays for water & trash
- Major Street Frontage with High Traffic Count
- Professionally Managed Shopping Center
- Large Open Office Area
- Kitchennette & Restroom
- Close Proximity to 605 & 10 Freeways
- HVAC in Office

LOCAL EXPERTISE. INTERNATIONAL REACH. WORLD CLASS.

### Max P. Eddy

Associate | Cal DRE# 02163858

P: +1(562) 354-2538

E: meddy@leelalb.com

### Garrett Massaro, SIOR

Principal | Cal DRE# 01771471

P: +1(562) 354-2516

E: gmassaro@leelalb.com

### Brandon Carrillo

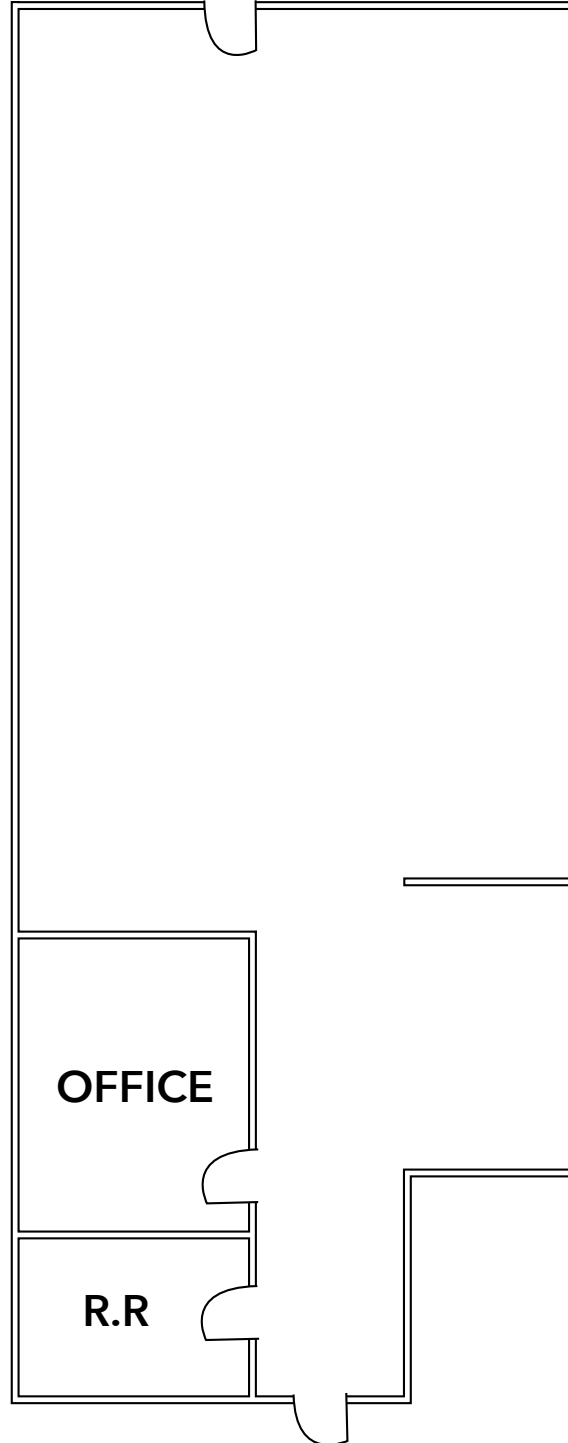
Principal | Cal DRE# 01745362

P: +1(562) 354-2510

E: bcarrillo@leelalb.com

Copyright © Lee & Associates. All rights reserved. No part of this work may be reproduced or distributed without written permission of the copyright owner. The information contained in this report was gathered by Lee & Associates from sources believed to be reliable. Lee & Associates, however, makes no representation concerning the accuracy or completeness of such information and expressly disclaims any responsibility for any inaccuracy contained herein.

## FLOOR PLAN (Not Drawn to Scale)



LOCAL EXPERTISE. INTERNATIONAL REACH. WORLD CLASS.

### Max P. Eddy

Associate | Cal DRE# 02163858

P: +1(562) 354-2538

E: meddy@leelalb.com

### Garrett Massaro, SIOR

Principal | Cal DRE# 01771471

P: +1(562) 354-2516

E: gmassaro@leelalb.com

### Brandon Carrillo

Principal | Cal DRE# 01745362

P: +1(562) 354-2510

E: bcarrillo@leelalb.com

Copyright © Lee & Associates. All rights reserved. No part of this work may be reproduced or distributed without written permission of the copyright owner. The information contained in this report was gathered by Lee & Associates from sources believed to be reliable. Lee & Associates, however, makes no representation concerning the accuracy or completeness of such information and expressly disclaims any responsibility for any inaccuracy contained herein.