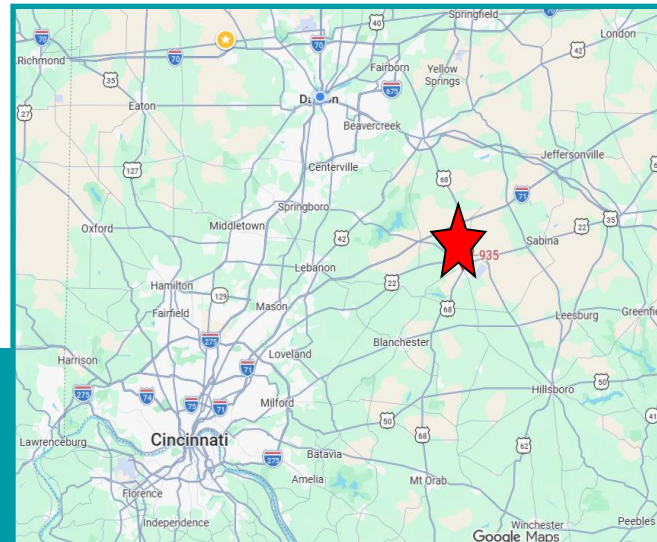




King Commons Shopping Center

935 S. South Street
Wilmington, Ohio 45177

- .59,973 sf Shopping Center
- . Located in Wilmington, OH, on US 68
- . 1,600 sf (address 989 S South Street; former hair salon) =
For Lease: \$12.00 PSF + \$2.74 NNN
- . 13,293 sf (address 953 S South Street; former Greater Cincinnati Behavioral Health 8/31/2026)
For Lease: \$14.00 PSF + \$2.74 NNN
- . Ample Parking
- . Below Market Rates!
- . Pylon Signage Available

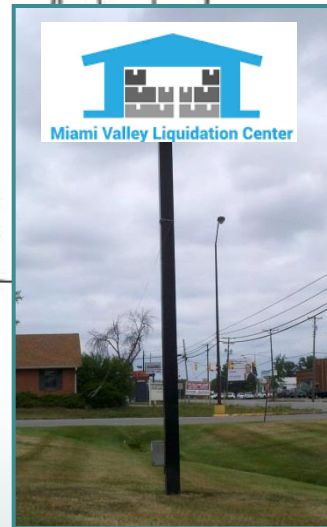
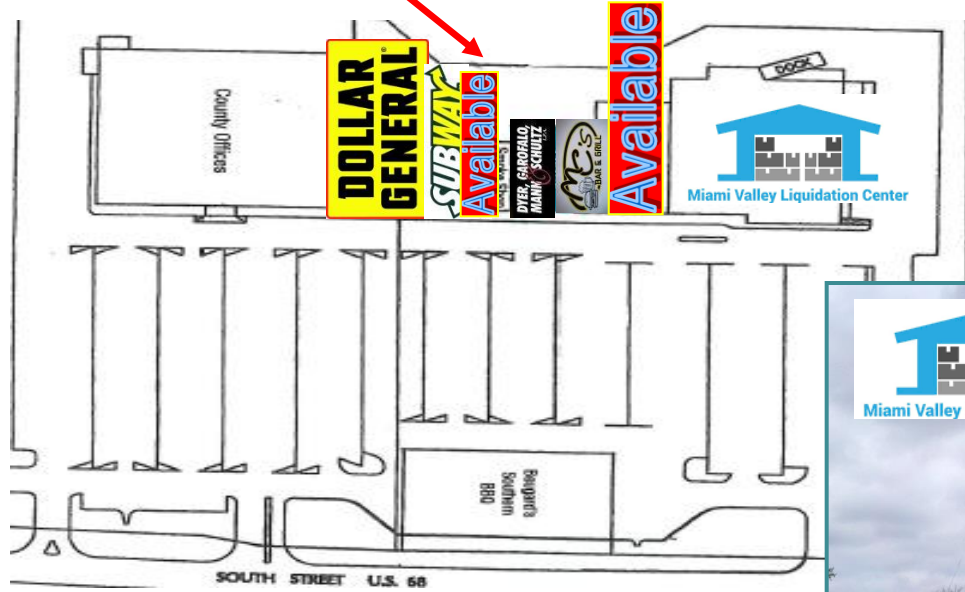
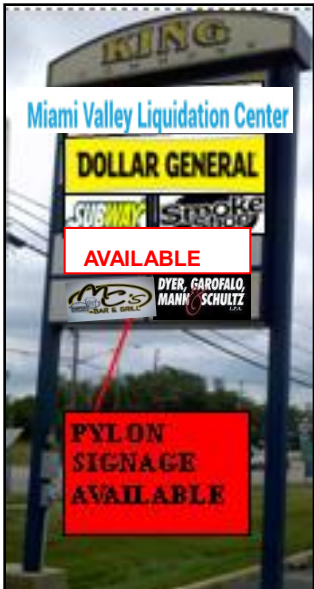
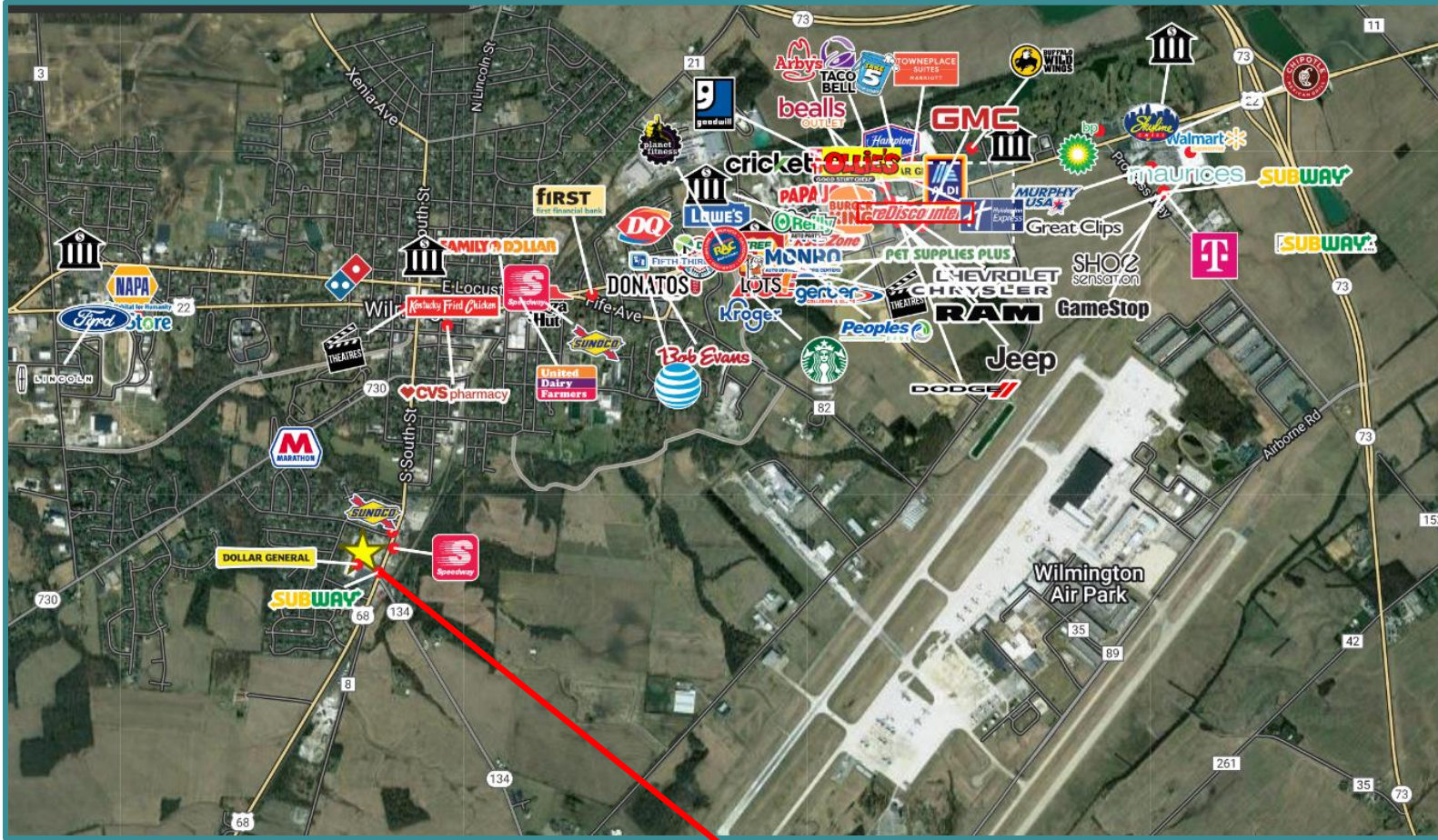


For More Information, Please Contact:

Tracey Herron | Sr. V.P. of Sales & Leasing
Mobile: 937.216.4636
therron@equity.net

Rebekah Dean | Advisor
Mobile: 937.470.8047
rdean@equity.net

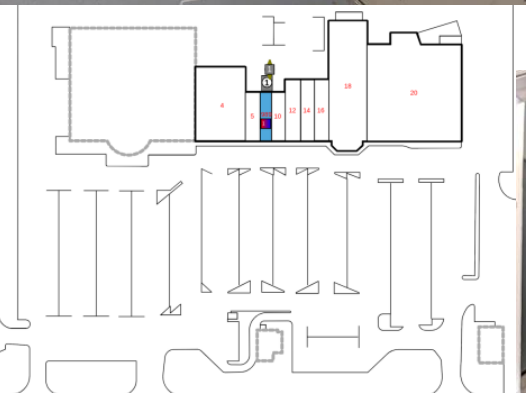
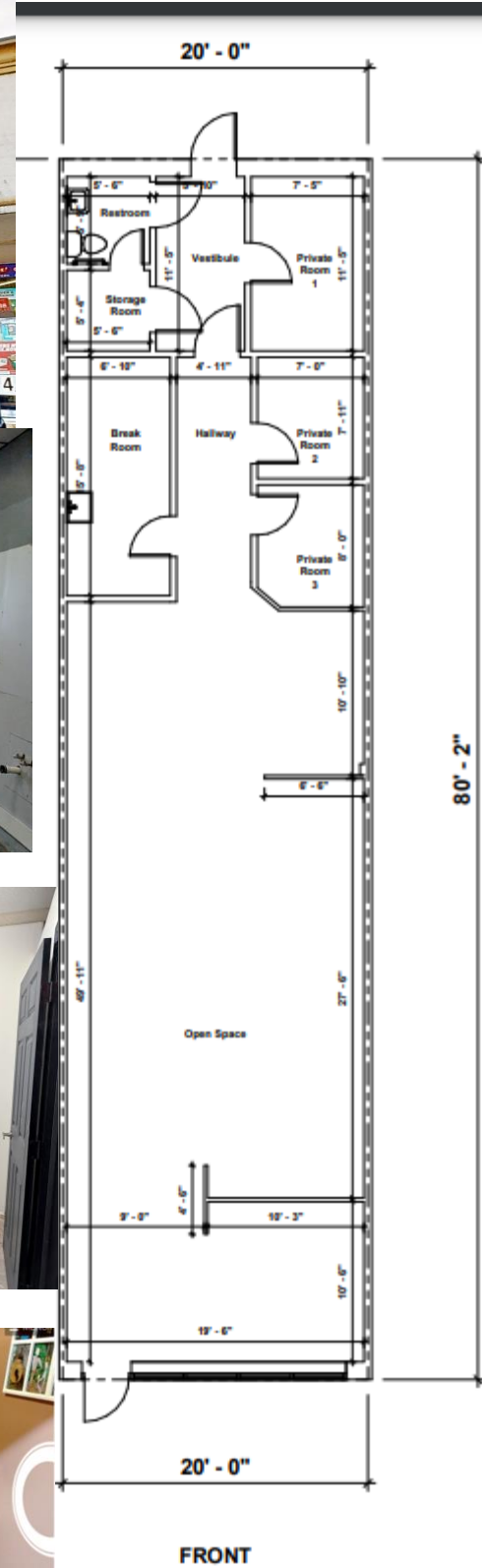
Equity LLC | O: 937.291.1179 | F: 937.291.1547 | www.equity.net
11 West Monument Avenue, Suite 506 | Dayton, OH 45402



| Demographics | 1 mi. | 3 mi. | 5 mi. |
|----------------|----------|----------|----------|
| Population | 4,564 | 14,223 | 17,972 |
| Avg. HH Income | \$75,147 | \$84,247 | \$93,046 |

Equity Inc. | O: 937.291.1179 | F: 937.291.1547 | www.equity.net
11 West Monument Avenue, Suite 506 | Dayton, OH 45402

Salon Pictures and Floorplan-1,600 SF ~ 989 S. South Street



Office Floorplan-13,293 SF ~ 953 S. South Street

Includes new carpet and paint selected by Tenant from Landlord's standards

GCBHS

953 S. South Street, Wilmington, Ohio 45177

