

**412 Louise Ave**

**Charlotte, NC  
28204**

# OFFICE BUILDING FOR LEASE



**\$32 PSF For Lease**

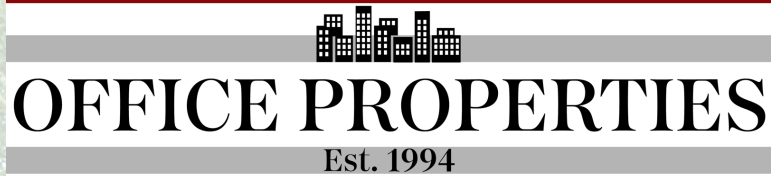
## ABOUT PROPERTY

- Located in the Elizabeth neighborhood in a highly walkable area east of Uptown.
- A mix of medical centers, local restaurants, and historic homes, nearby.
- Proximity to Central Avenue in Plaza Midwood.

## PROPERTY DETAILS

- 3,661 SF For Lease at \$32 PSF Modified Gross.
- Parking on street and behind building.
- Comfortable interior layout with nice finishes.

**412 Louise Ave  
Charlotte, NC 28204**



## **PROPERTY CONTACTS:**

**John Stipp**

**[John@CharlotteOfficeSpace.com](mailto:John@CharlotteOfficeSpace.com)**

**704-540-1260**

**Jackson Stipp**

**[Jackson@CharlotteOfficeSpace.com](mailto:Jackson@CharlotteOfficeSpace.com)**

**704-907-5074**

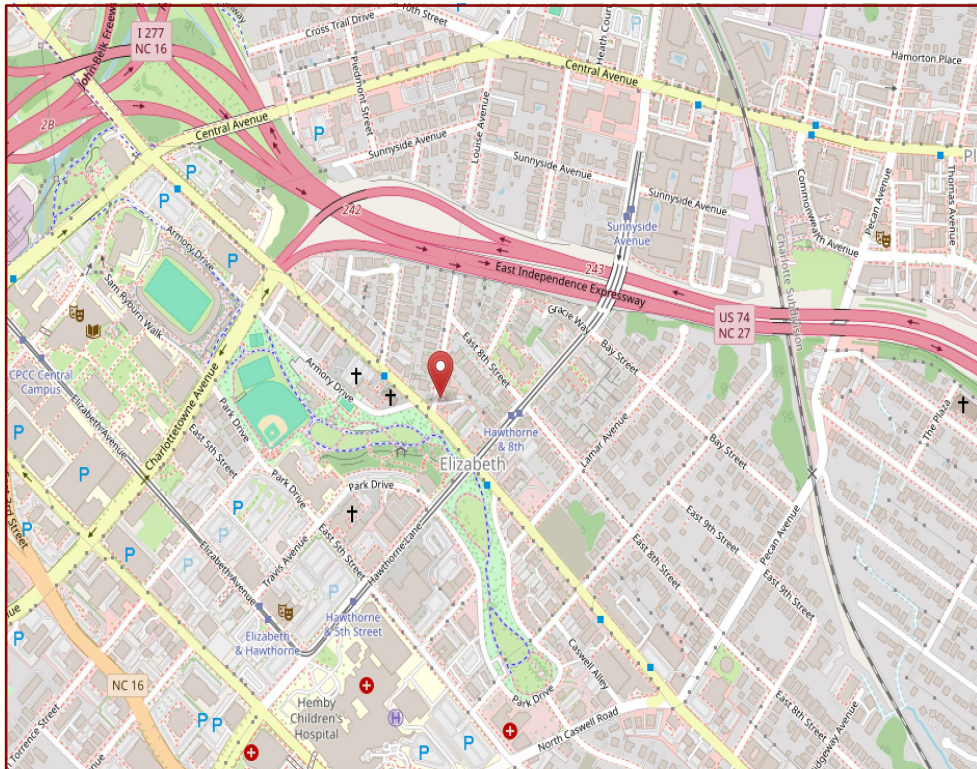
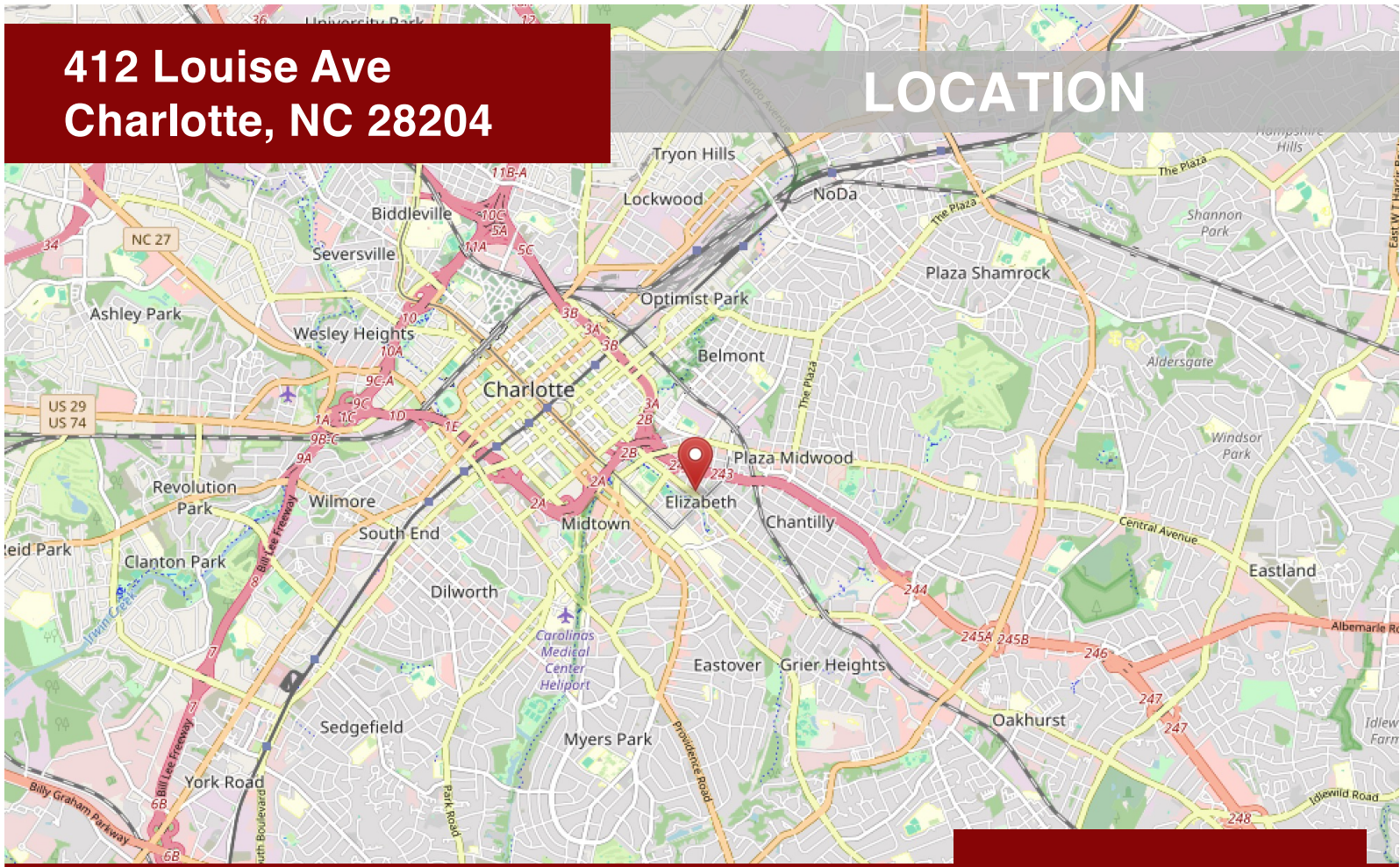
**CHARLOTTEOFFICESPACE.COM**

**8508-124 Park Rd, Charlotte, NC 28210**

The information contained herein has been obtained from sources deemed reliable, but we make no guarantees, warranties, or representations as to the completeness or accuracy thereof.

**412 Louise Ave  
Charlotte, NC 28204**

# LOCATION



Located east of  
Uptown city center.



**YEAR BUILT**  
1957



**Exceptional  
Walkability**



**AVAILABLE SF**  
3661

412 Louise Ave  
Charlotte, NC 28204

# INTERIOR PHOTOS

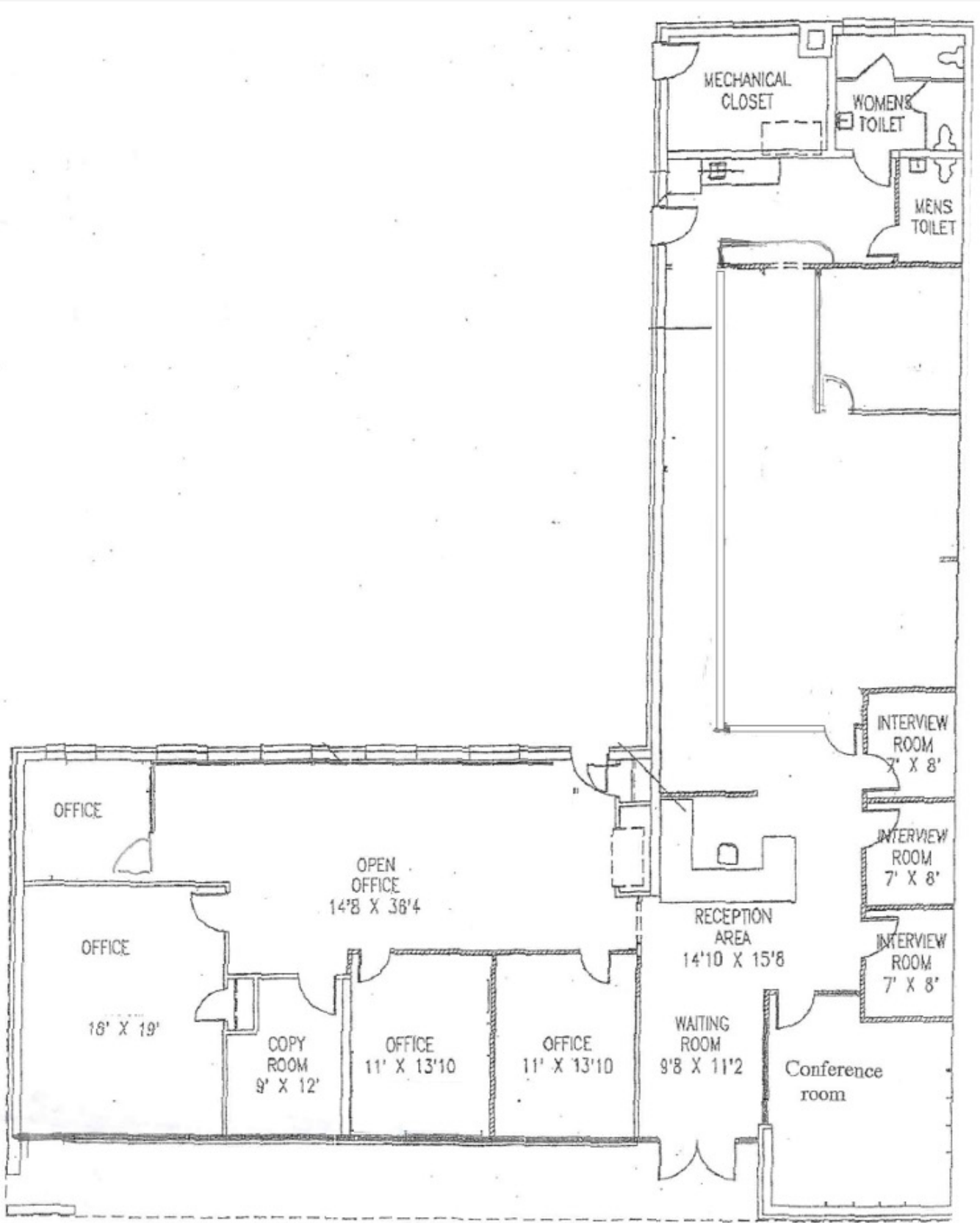


# OFFICE PROPERTIES

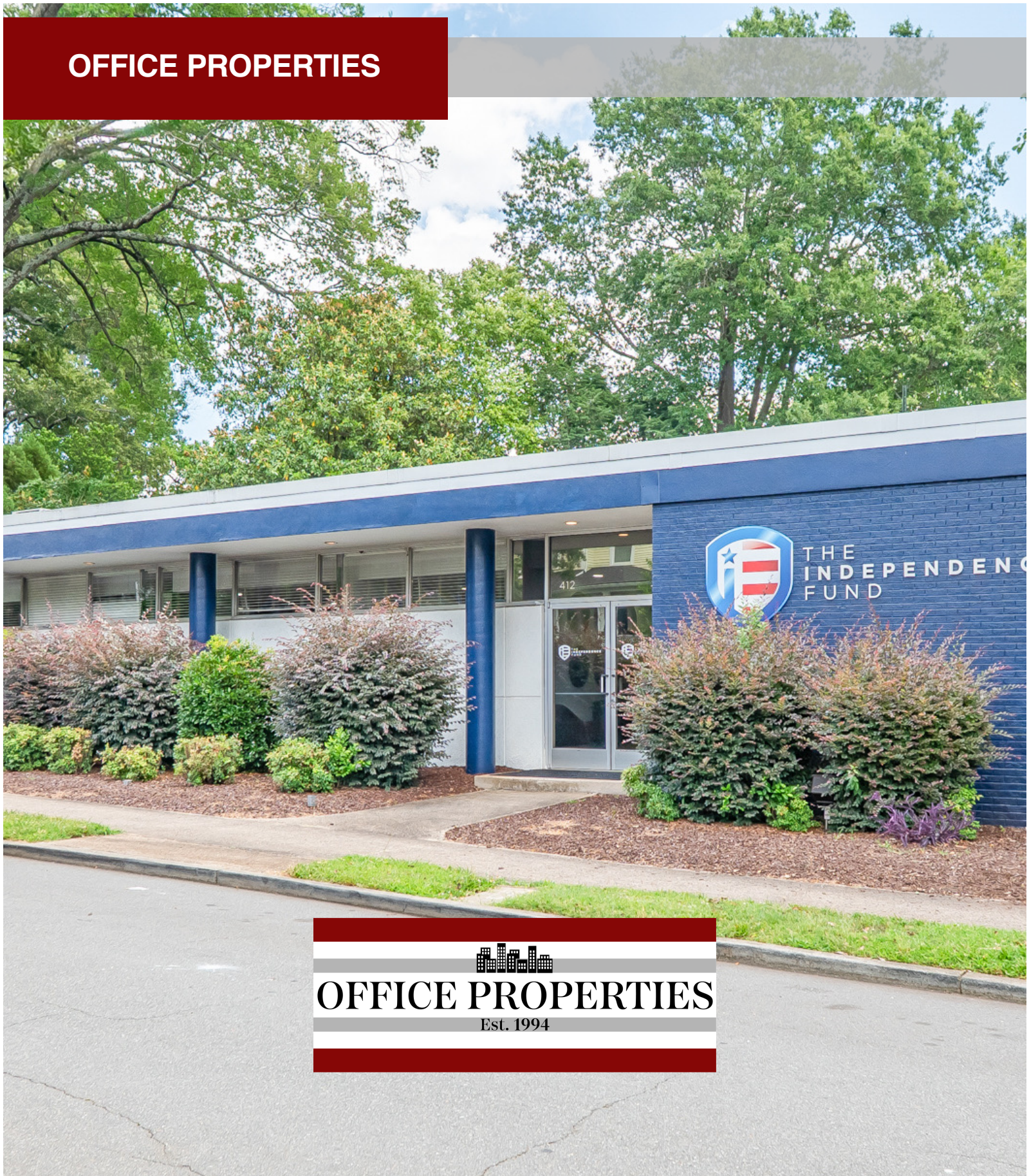
Est. 1994

412 Louise Ave,  
Charlotte, NC 28204

# FLOOR PLAN



# OFFICE PROPERTIES



**OFFICE PROPERTIES**  
Est. 1994

## For More Information:

John Stipp  
[John@CharlotteOfficeSpace.com](mailto:John@CharlotteOfficeSpace.com)  
704-540-1260

Jackson Stipp  
[Jackson@CharlotteOfficeSpace.com](mailto:Jackson@CharlotteOfficeSpace.com)  
704-907-5074