

5125

Sherbrooke Street West
Montréal, Québec

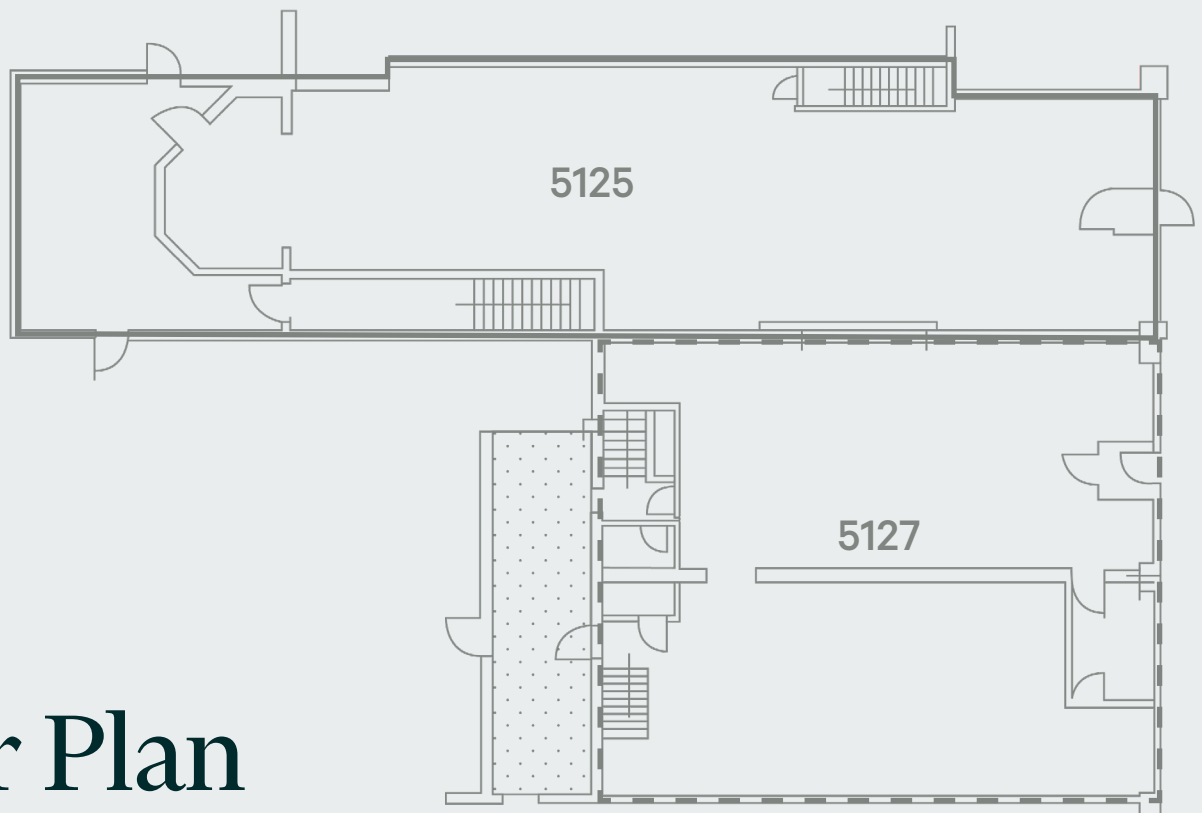


5125 Sherbrook Street West
Montréal, Québec

Lease Terms

5 years

- Area: 1,700 sq. ft.
- Availability: Immediate
- Net rent: \$50.00
- Additional rent: \$10.00
- Hydro: Metered



Floor Plan

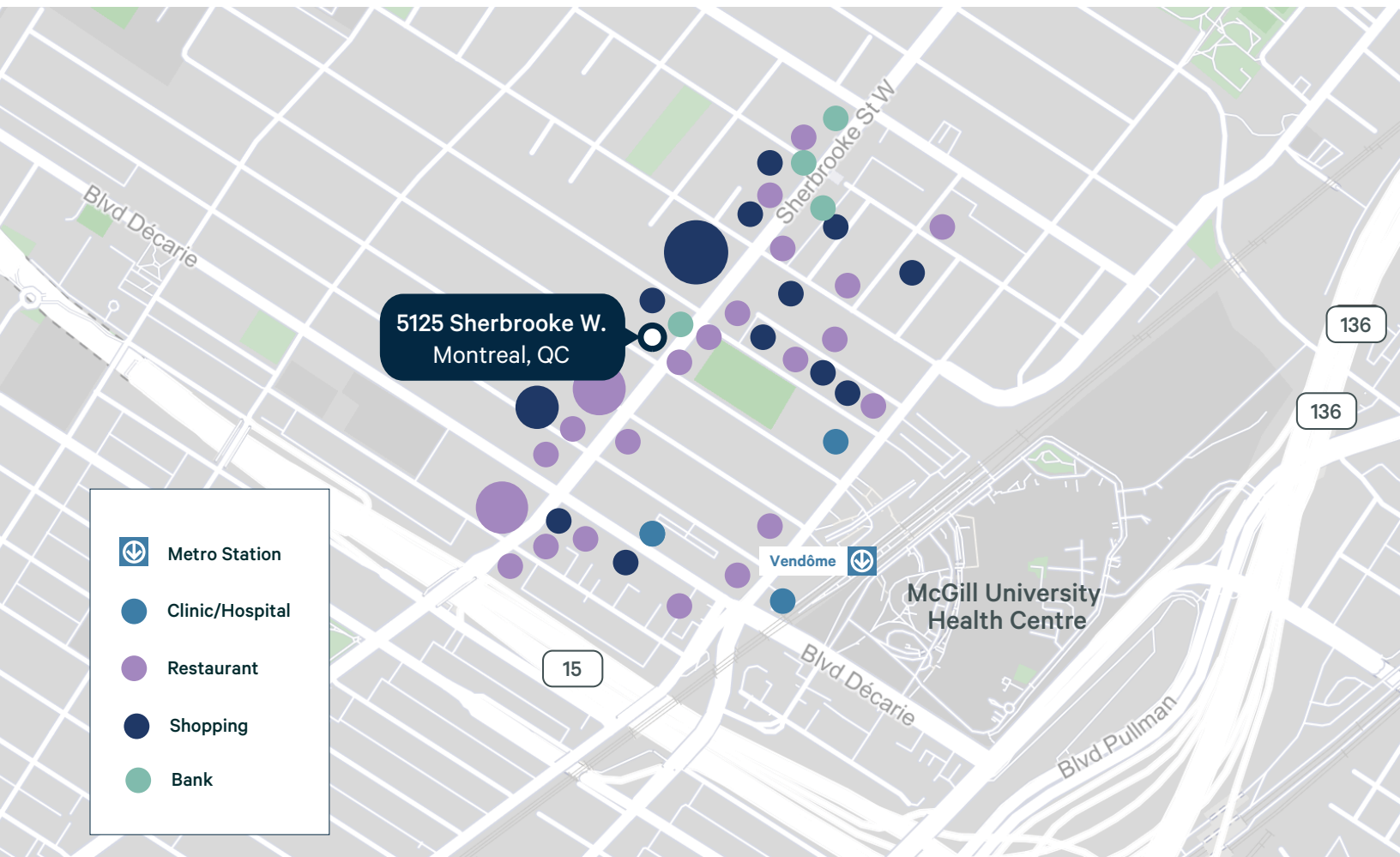


Property Details

- Located on Sherbrooke Street West between de Vendome and Grey avenues
- 5-mins walk to the Vendome metro and train station
- In proximity of the Glen site | McGill University Health Centre
- Possibility of combining with unit 5127 for a total of 3,400 sq. ft.
- Space previously occupied by a hair salon



Location



Contact Us

Christopher Rundle

Associate Vice President
Real Estate Broker
+1 514 375 0818
christopher.rundle@cbre.com

Amanda Angela Herbu

Associate
Commercial Real Estate Broker
+1 514 375 0456
amanda.herbu@cbre.com

CBRE Limited, Real Estate Agency

1250 René-Lévesque Blvd West
Suite 2800, Montréal
Québec H3B 4W8
+1 514 849 6000 | www.cbre.ca

This disclaimer shall apply to CBRE Limited, Real Estate Agency, and to all other divisions of the Corporation; to include all employees and independent contractors ("CBRE"). The information set out herein, including, without limitation, any projections, images, opinions, assumptions and estimates obtained from third parties (the "Information") has not been verified by CBRE, and CBRE does not represent, warrant or guarantee the accuracy, correctness and completeness of the Information. CBRE does not accept or assume any responsibility or liability, direct or consequential, for the Information or the recipient's reliance upon the Information. The recipient of the Information should take such steps as the recipient may deem necessary to verify the Information prior to placing any reliance upon the Information. The Information may change and any property described in the Information may be withdrawn from the market at any time without notice or obligation to the recipient from CBRE. CBRE and the CBRE logo are the service marks of CBRE Limited and/or its affiliated or related companies in other countries. All other marks displayed on this document are the property of their respective owners. All Rights Reserved. Mapping Sources: Canadian Mapping Services canadamapping@cbre.com; DMTI Spatial, Environics Analytics, Microsoft Bing, Google Earth.