

ALLEGAN - FREESTANDING OFFICE/RETAIL BUILDING

500 LINN STREET | ALLEGAN, MI 49010



FOR SALE | FOR LEASE

C3 CRE, LLC

Woodward Crossings - 36800 Woodward Avenue | Suite 301 | Bloomfield Hills, MI 48304 | 248.220.1110 | c3cre.com

One Harbour Place - 777 South Harbour Island Boulevard | Suite 250 | Tampa, FL 33602 | 813.212.9155 | info@c3cre.com



ALLEGAN - FREESTANDING OFFICE/RETAIL BUILDING

500 LINN STREET | ALLEGAN, MI 49010

PROPERTY HIGHLIGHTS

- Freestanding two-tenant retail/office building available for sale or for lease.
- The property is zoned TN2 Transitional Neighborhood Residential and can be used for office, medical, and retail users.
- Suite A is occupied on a month to month basis by a local chiropractor.
- Suite B site was formerly operated as an Adult-Use Provisioning Center and is in turnkey condition.
- The property has undergone extensive renovations is move in ready and equipped with a backup generator, security system, and more.
- The site is located in a high-income area and in close proximity to local and national retailers.
- Great opportunity for an owner/user or investor to take advantage of.

DEMOGRAPHICS	5 MILES	10 MILES	20 MILES
Total Households	5,143	11,563	90,476
Total Population	13,178	30,057	232,599
Average HH Income	\$81,581	\$86,441	\$92,847

BUILDING SIZE

Total Building: 4,386 SF
 Suite A: 2,124 SF
 Suite B: 2,262 SF

LAND SIZE

0.93 Acres

ASKING PRICE

\$285,000 (Seller Financing Available)

LEASE PRICE

\$3,500 per month + NNN (Suite B)

AREA TENANTS



C3 CRE, LLC

Woodward Crossings - 36800 Woodward Avenue | Suite 301 | Bloomfield Hills, MI 48304 | 248.220.1110 | c3cre.com
 One Harbour Place - 777 South Harbour Island Boulevard | Suite 250 | Tampa, FL 33602 | 813.212.9155 | info@c3cre.com



ALLEGAN - FREESTANDING OFFICE/RETAIL BUILDING

500 LINN STREET | ALLEGAN, MI 49010



C3 CRE, LLC

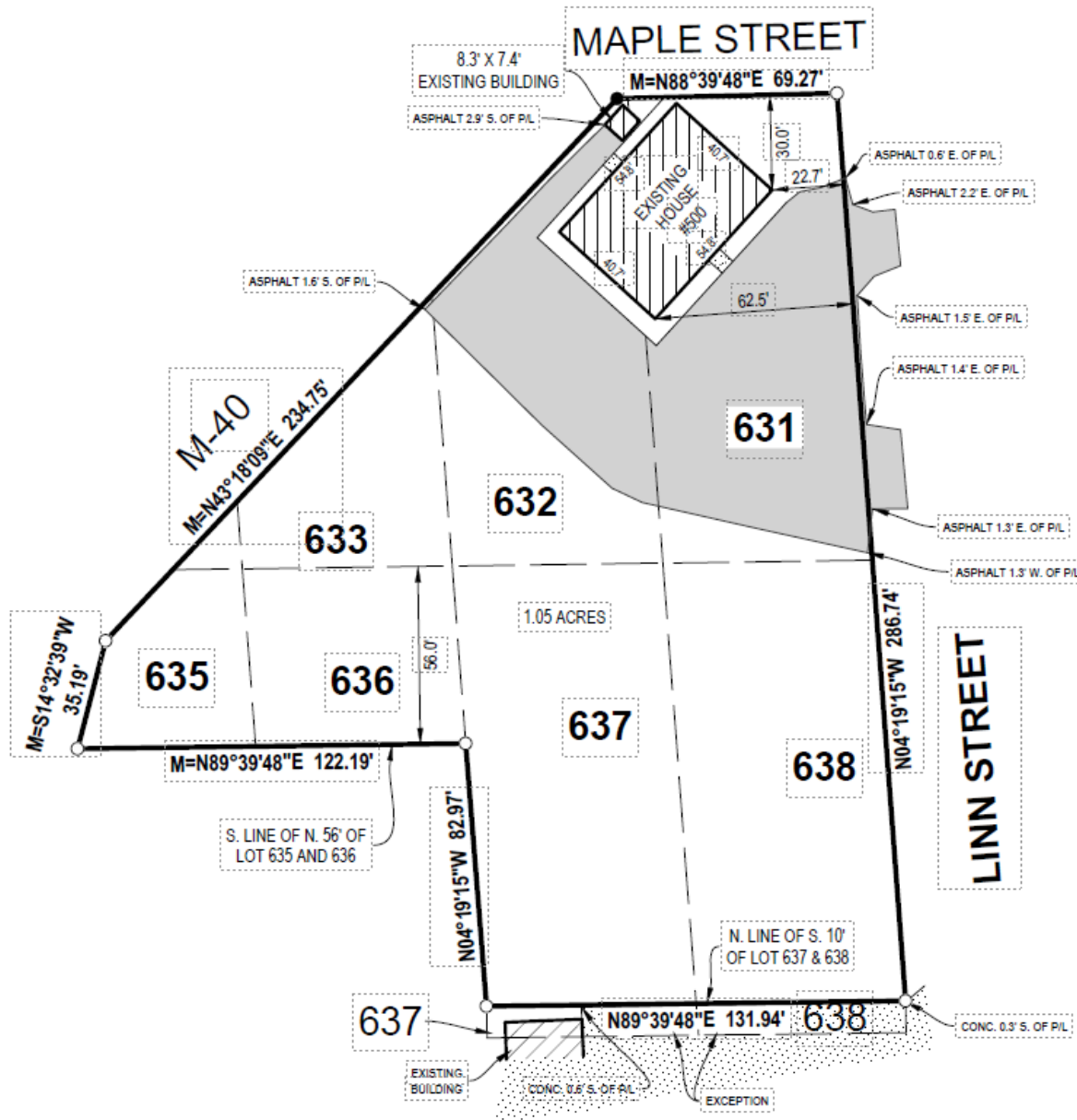
Woodward Crossings - 36800 Woodward Avenue | Suite 301 | Bloomfield Hills, MI 48304 | 248.220.1110 | c3cre.com

One Harbour Place - 777 South Harbour Island Boulevard | Suite 250 | Tampa, FL 33602 | 813.212.9155 | info@c3cre.com



ALLEGAN - FREESTANDING OFFICE/RETAIL BUILDING

500 LINN STREET | ALLEGAN, MI 49010



C3 CRE, LLC

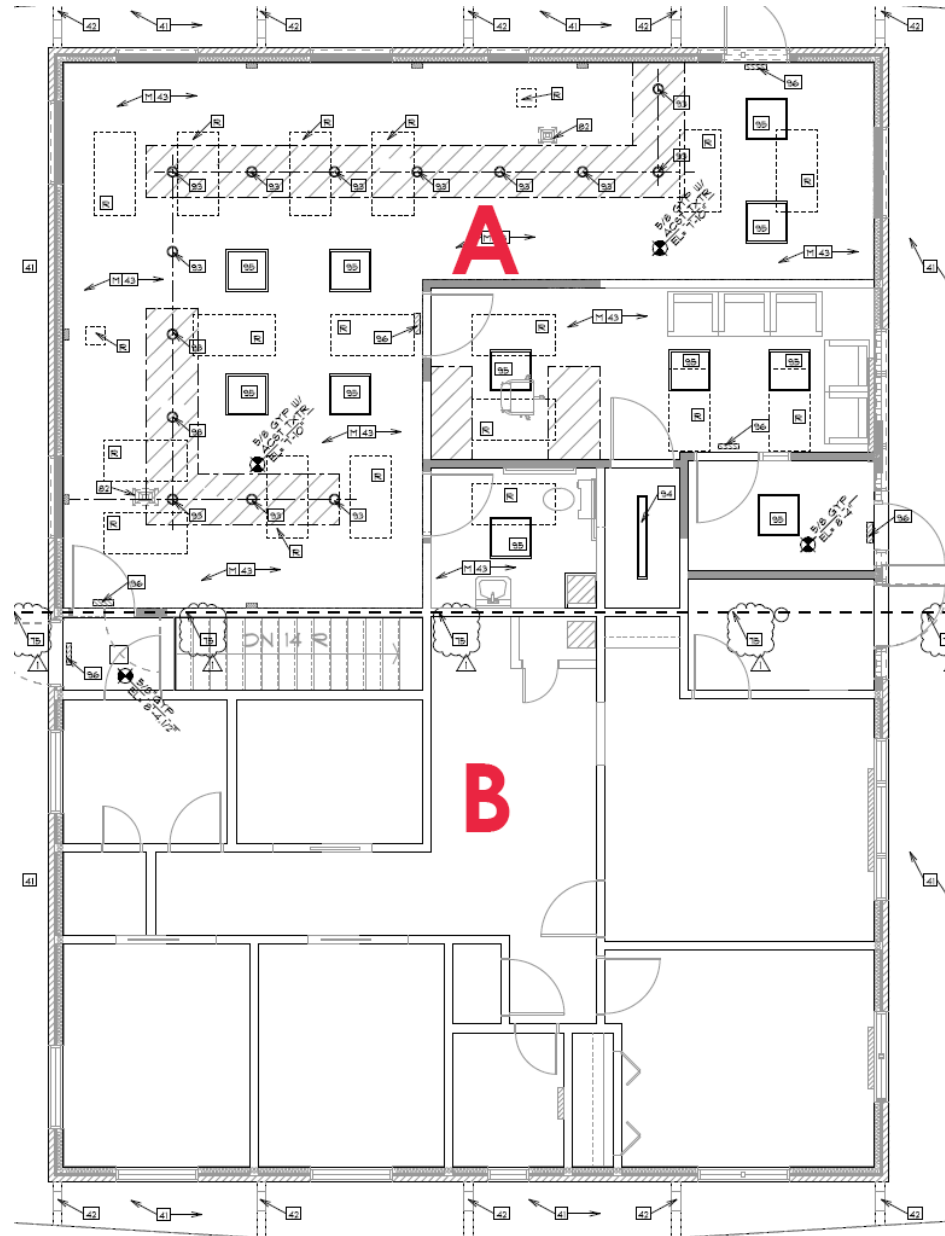
Woodward Crossings - 36800 Woodward Avenue | Suite 301 | Bloomfield Hills, MI 48304 | 248.220.1110 | c3cre.com

One Harbour Place - 777 South Harbour Island Boulevard | Suite 250 | Tampa, FL 33602 | 813.212.9155 | info@c3cre.com



ALLEGAN - FREESTANDING OFFICE/RETAIL BUILDING

500 LINN STREET | ALLEGAN, MI 49010



C3 CRE, LLC

Woodward Crossings - 36800 Woodward Avenue | Suite 301 | Bloomfield Hills, MI 48304 | 248.220.1110 | c3cre.com

One Harbour Place - 777 South Harbour Island Boulevard | Suite 250 | Tampa, FL 33602 | 813.212.9155 | info@c3cre.com



ALLEGAN - FREESTANDING OFFICE/RETAIL BUILDING

500 LINN STREET | ALLEGAN, MI 49010



C3 CRE, LLC

Woodward Crossings - 36800 Woodward Avenue | Suite 301 | Bloomfield Hills, MI 48304 | 248.220.1110 | c3cre.com

One Harbour Place - 777 South Harbour Island Boulevard | Suite 250 | Tampa, FL 33602 | 813.212.9155 | info@c3cre.com



ALLEGAN - FREESTANDING OFFICE/RETAIL BUILDING

500 LINN STREET | ALLEGAN, MI 49010



C3 CRE, LLC

Woodward Crossings - 36800 Woodward Avenue | Suite 301 | Bloomfield Hills, MI 48304 | 248.220.1110 | c3cre.com

One Harbour Place - 777 South Harbour Island Boulevard | Suite 250 | Tampa, FL 33602 | 813.212.9155 | info@c3cre.com



ALLEGAN - FREESTANDING OFFICE/RETAIL BUILDING

500 LINN STREET | ALLEGAN, MI 49010



C3 CRE, LLC

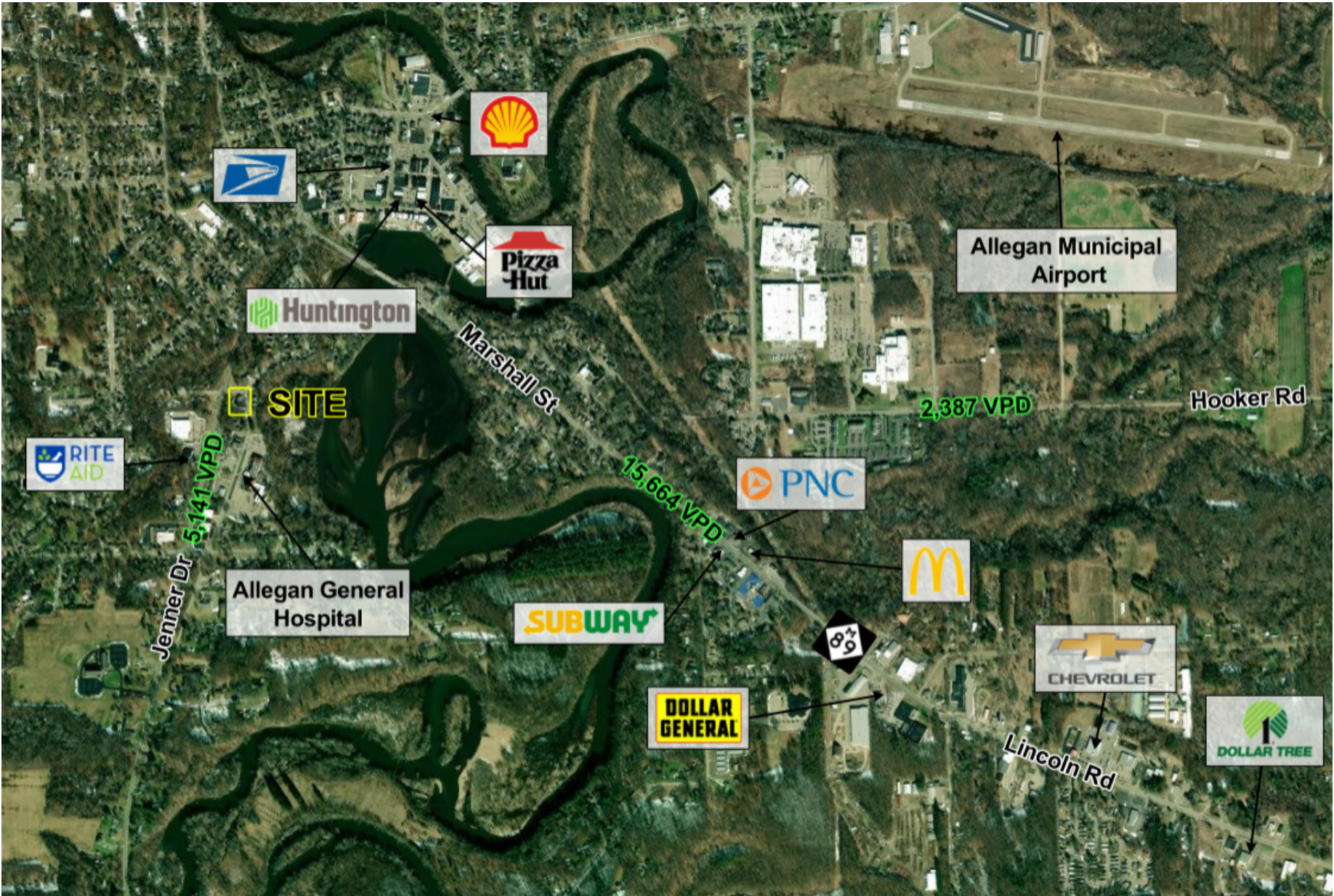
Woodward Crossings - 36800 Woodward Avenue | Suite 301 | Bloomfield Hills, MI 48304 | 248.220.1110 | c3cre.com

One Harbour Place - 777 South Harbour Island Boulevard | Suite 250 | Tampa, FL 33602 | 813.212.9155 | info@c3cre.com



ALLEGAN - FREESTANDING OFFICE/RETAIL BUILDING

500 LINN STREET | ALLEGAN, MI 49010



C3 CRE, LLC

Woodward Crossings - 36800 Woodward Avenue | Suite 301 | Bloomfield Hills, MI 48304 | 248.220.1110 | c3cre.com
One Harbour Place - 777 South Harbour Island Boulevard | Suite 250 | Tampa, FL 33602 | 813.212.9155 | info@c3cre.com





CORBIN YALDOO

Founder/President

248.220.1110 x01

corbin@c3cre.com

SERVICES

Buyer and Seller Representation

Land Brokerage

Cannabis Acquisitions and Dispositions

Portfolio and Surplus Property Sales

Investment Sales

Site Selection and Location Strategy

C3 CRE, LLC

Woodward Crossings - 36800 Woodward Avenue | Suite 301 | Bloomfield Hills, MI 48304 | 248.220.1110 | c3cre.com

One Harbour Place - 777 South Harbour Island Boulevard | Suite 250 | Tampa, FL 33602 | 813.212.9155 | info@c3cre.com



ALLEGAN - FREESTANDING OFFICE/RETAIL BUILDING

500 LINN STREET | ALLEGAN, MI 49010

General:

C3 CRE, LLC is a licensed real estate brokerage, and our employees and contractors are not a substitute for qualified legal, tax or accounting advice. We do not provide such advice. We recommend obtaining the advice of qualified legal counsel and other professionals. Any assistance we may provide in reviewing legal documents is for guidance as a courtesy only. Our agents have no authority to contractually bind any client.

All property information is subject to the possibility of errors, omissions, change of price or other terms or conditions, prior sale, lease or financing, and withdrawal without notice. Delays, omissions and inaccuracies may arise due to a number of factors, including changes in laws.

We obtain information from sources we believe are reliable, but we provide no guaranty or warranty concerning its accuracy. Any projections, estimates, future plans, and forward-looking statements are based on assumptions, subject to uncertainty, and may vary from actual results. All information should be independently verified.

Affiliations:

We may have relationships with companies we recommend or with whom we conduct business, including lenders, real estate brokers, loan brokers, insurance agents and others. We never require use of any company as a condition of our services. You should review each provider's fees, rates, terms of service and other relevant information.

Cannabis Industry Regulation:

Our services to those in the cannabis industry are limited by state laws relating to medical and adult use cannabis operations. All cannabis-related business is currently illegal under U.S. federal law. Nothing contained on our website or other marketing materials nor any of our services is intended to assist in any violation of law. Our cannabis-related marketing materials are intended for use in jurisdictions in which cannabis is legal. Both Michigan law and municipal ordinances have licensing and permitting requirements and processes for cannabis-related businesses. You should consult an attorney or other knowledgeable professional on such matters.

Real Estate Agency Relationships:

Seller's Agent - A seller's agent, under a listing agreement with the seller, acts solely on behalf of the seller. A seller can authorize a seller's agent to work with subagents, buyer's agents and/or transaction coordinators. A subagent is one who has agreed to work with the listing agent, and who, like the listing agent, acts solely on behalf of the seller. Seller's agents and subagents will disclose to the seller known information about the buyer which may be used to the benefit of the seller. Individual services may be waived by the seller through execution of a limited service agreement.

Buyer's Agent - A buyer's agent, under a buyer's agency agreement with the buyer, acts solely on behalf of the buyer. Buyer's agents and subagents will disclose to the buyer known information about the seller which may be used to benefit the buyer. Individual services may be waived by the buyer through execution of a limited service agreement.

Dual Agents - A real estate licensee can be the agent of both the seller and the buyer in a transaction, but only with the knowledge and informed consent, in writing, of both the seller and the buyer. In such a dual agency situation, the agent will not be able to disclose all known information to either the seller or the buyer. The obligations of a dual agent are subject to any specific provisions set forth in any agreement between the dual agent, the seller, and the buyer.

C3 CRE, LLC

Woodward Crossings - 36800 Woodward Avenue | Suite 301 | Bloomfield Hills, MI 48304 | 248.220.1110 | c3cre.com

One Harbour Place - 777 South Harbour Island Boulevard | Suite 250 | Tampa, FL 33602 | 813.212.9155 | info@c3cre.com

