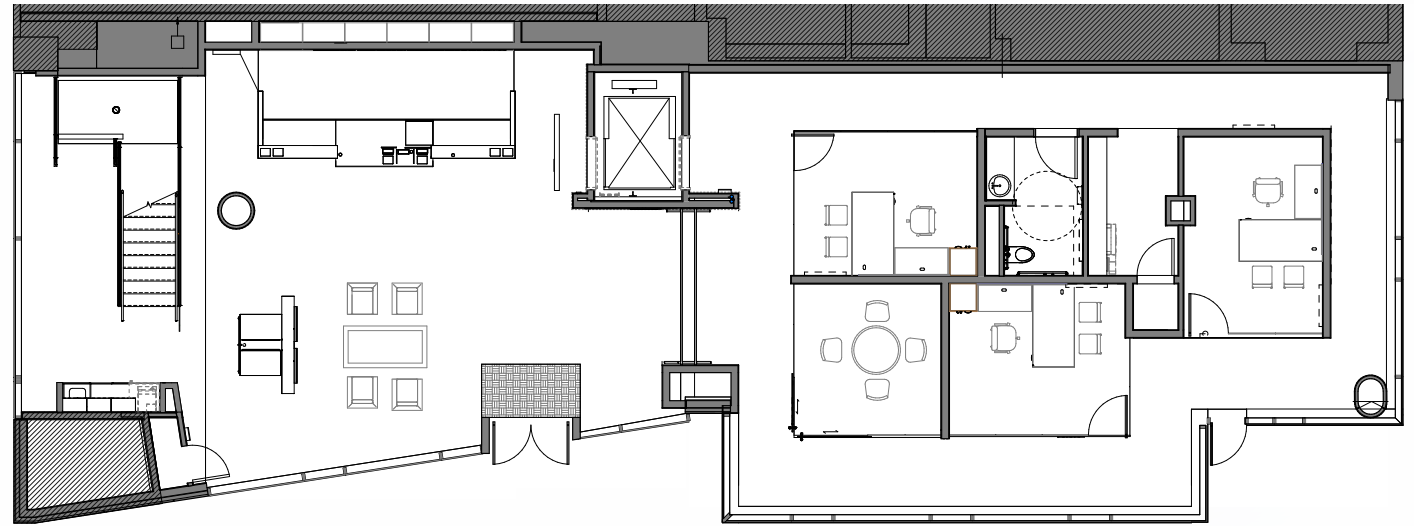


# GROUND FLOOR | 3,035 RSF

# PARK AVENUE WEST

820 SW MORRISON ST, PORTLAND, OR 97205



← SW Morrison St →

Ground Floor - Retail Branch

CONNECTED TO 2ND FLOOR

Total: 11,491 RSF

CONTIGUOUS 2ND FLOOR SPACE  
ALSO AVAILABLE (LATE 2027)

Additional: ±10,000 RSF

Total Combined: ±21,500 RSF

For Leasing Information Please Contact:

**JEFF FALCONER, SIOR**

Principal | Licensed in OR

503-542-4346 | jeff@capacitycommercial.com

# 2ND FLOOR | 8,456 RSF

# PARK AVENUE WEST

820 SW MORRISON ST, PORTLAND, OR 97205



### CONNECTED TO GROUND FLOOR

Total: 11,491 RSF

### CONTIGUOUS 2ND FLOOR SPACE ALSO AVAILABLE (LATE 2027)

Additional: ±10,000 RSF

Total Combined: ±21,500 RSF

For Leasing Information Please Contact:

**JEFF FALCONER, SIOR**

Principal | Licensed in OR

503-542-4346 | jeff@capacitycommercial.com

Additional Contiguous Office Space Available (Late 2027)



2nd Floor - Wealth Management Offices

← SW Morrison St →