

FOR LEASE

5140

WAGNER FORD ROAD
DAYTON, OH 45414



PROPERTY HIGHLIGHTS

- + 3,000 square feet available
- + 600 square feet of office
- + Harrison Township
- + Fenced perimeter security
- + 2 overhead doors 12' x 13'
- + Well water
- + 3 - Phase power 240V
- + I2 zoning



CONTACT US

MATT ARNOVITZ

CPM, CCIM, SIOR
Senior Associate
+1 937 461 CBRE (2273)
matt.arnovitz@cbre.com

www.cbre.us/dayton

CBRE

FOR LEASE

5140
WAGNER FORD ROAD
Dayton, OH 45414



INTERIOR PHOTOS



www.cbre.us/dayton

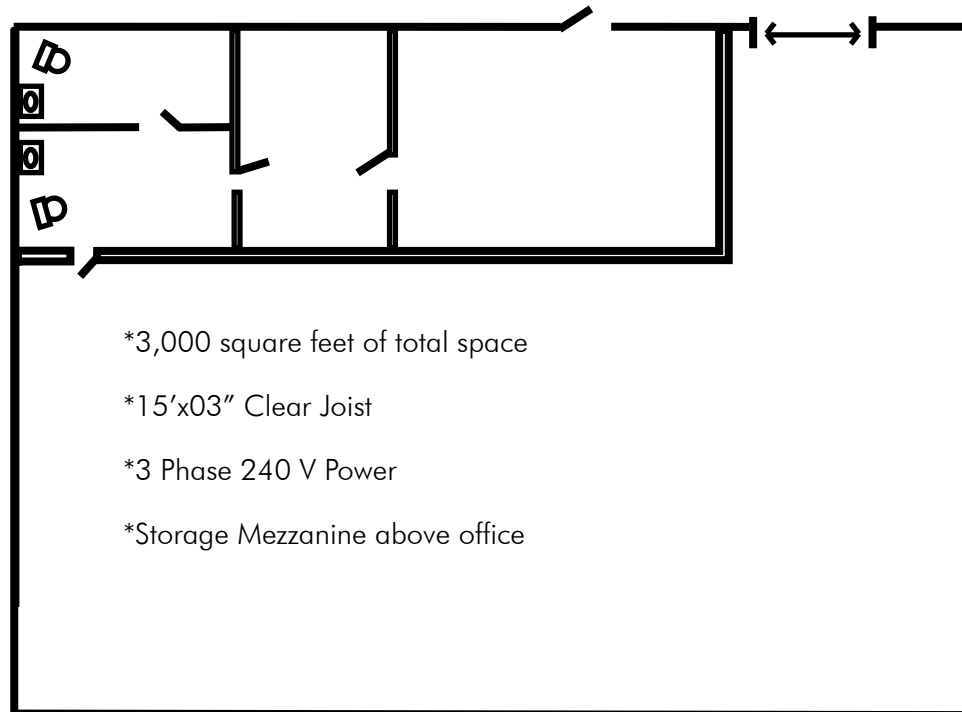
CBRE

FOR LEASE

5140
WAGNER FORD ROAD
Dayton, OH 45414



**FLOOR
PLAN**



- *3,000 square feet of total space
- *15'x03" Clear Joist
- *3 Phase 240 V Power
- *Storage Mezzanine above office

© 2018 CBRE, Inc. All rights reserved. This information has been obtained from sources believed reliable, but has not been verified for accuracy or completeness. You should conduct a careful, independent investigation of the property and verify all information. Any reliance on this information is solely at your own risk. CBRE and the CBRE logo are service marks of CBRE, Inc. All other marks displayed on this document are the property of their respective owners. Photos herein are the property of their respective owners. Use of these images without the express written consent of the owner is prohibited.

www.cbre.us/dayton

CBRE

FOR LEASE

5140
WAGNER FORD ROAD
Dayton, OH 45414



PROPERTY AERIAL



© 2018 CBRE, Inc. All rights reserved. This information has been obtained from sources believed reliable, but has not been verified for accuracy or completeness. You should conduct a careful, independent investigation of the property and verify all information. Any reliance on this information is solely at your own risk. CBRE and the CBRE logo are service marks of CBRE, Inc. All other marks displayed on this document are the property of their respective owners. Photos herein are the property of their respective owners. Use of these images without the express written consent of the owner is prohibited.

www.cbre.us/dayton

CBRE