

FOR SALE

661 S MAIN ST, LEBANON



OFFERED AT \$5,000,000



Historic Downtown Hotel

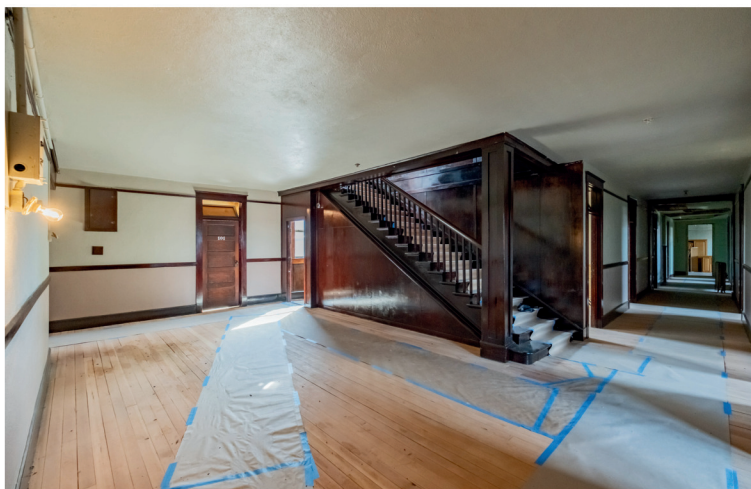
- Historic downtown hotel established in 1910
- Approximately 33,612 SF.
- 4 glass front retail spaces 100% occupied.
- The second and third floors are in process of renovation for an upside of 60+ hotel or apartment spaces.



kw MID-WILLAMETTE
KELLERWILLIAMS, REALTY



TEAMGILLOTT.COM



- **New membrane roof in 2020**
- **Upgrades in Electrical and Plumbing**
- **10 apartment units are 100% occupied**
- **0.37 acre off street parking lot.**
- **Gross Annual Income \$220,548,**
- **Expenses \$43,584 = 20% of Gross**
- **NOI \$176,964 at asking = 3.4% CAP**

Bill Flesher

LICENSED OREGON BROKER

541.905.3258

BILLF@TEAMGILLOTT.COM

Gillott Home Team

Keller Williams Realty Mid-Willamette

255 E Grant St. | Lebanon, OR