

# THE EDGE

34560 US HWY 19 N  
SUITE 201/202, PALM HARBOR, FL



## Property Highlights

Suite 201/202: 2,070 SF - 4,482 SF

Two adjoining suites for lease with seamless office space, providing a contiguous total of up to 4,482 SF.



Excellent US  
Hwy 19 Location



2,070 SF - 4,482 SF  
available



Outside Terrace

## LISTING AGENTS

Larry Brown

Email: [lbrown@thekraussorg.com](mailto:lbrown@thekraussorg.com)

Office: (813) 885-5656

Cell: (813) 787-9637

Bob Donnelly

Email: [rdonnelly@thekraussorg.com](mailto:rdonnelly@thekraussorg.com)

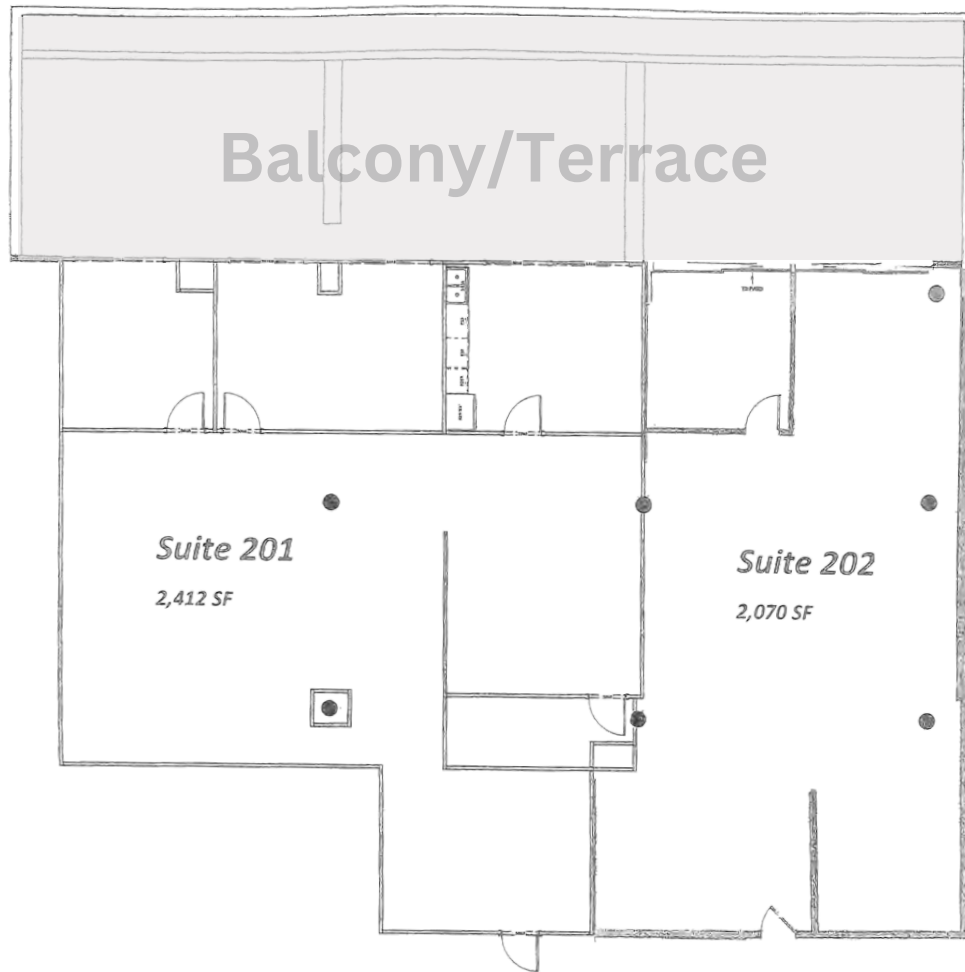
Office: (813) 885-5656

Cell: (813) 758-2312

70TH ANNIVERSARY

**THE KRAUSS** ORGANIZATION, INC.  
Commercial Real Estate Services • Since 1952  
Proudly Serving Tampa Bay for over 70 Years

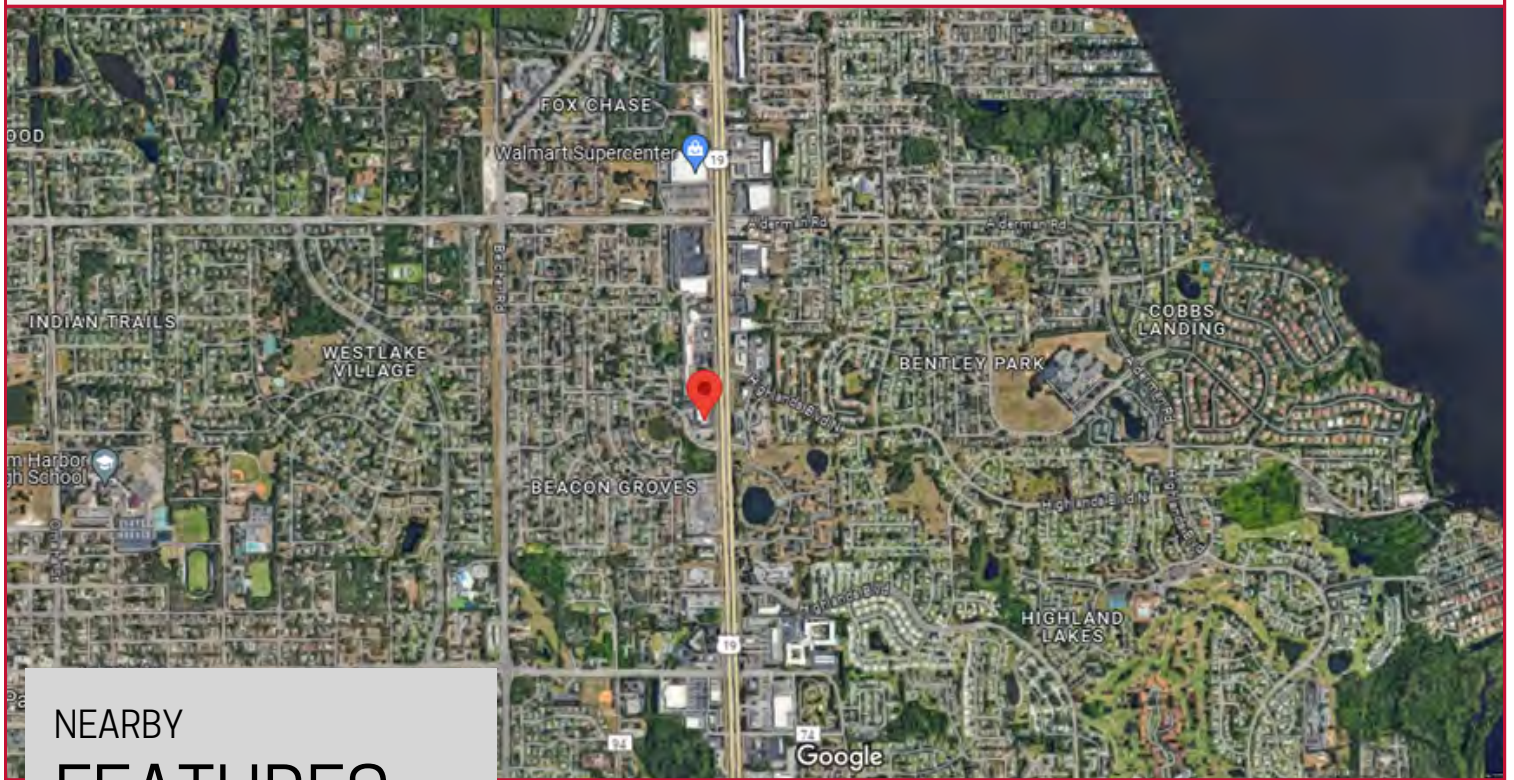
# THE FLOORPLAN



# THE TERRACE



# NEIGHBORHOOD



## NEARBY FEATURES

**SPROUTS**  
FARMERS MARKET



*Walgreens*



LA | FITNESS

Walmart



The UPS Store

For Additional Information  
Please Contact :

Larry Brown

Email: [lbrown@thekraussorg.com](mailto:lbrown@thekraussorg.com)

Office: (813) 885-5656

Cell: (813) 787-9637

Bob Donnelly

Email: [rdonnelly@thekraussorg.com](mailto:rdonnelly@thekraussorg.com)

Office: (813) 885-5656

Cell: (813) 758-2312

**THE KRAUSS** ORGANIZATION, INC.  
Commercial Real Estate Services • Since 1952