

Royal Palm Office Park

CLASS A OFFICE BUILDING | 8200 NW 41st Street, Doral, FL 33166

<https://naimia-ftl.com/properties/#/royal-palm-office-park>



Gabriel Guillen

+1 (786) 697 6214

gguillen@naimiami.com

Gabriel Garcia-Menocal, SIOR

+1 (786) 433 3148

ggarcia-menocal@naimiami.com

Jeremy S. Larkin

+1 (786) 260 0402

jlarkin@naimiami.com

NA Miami
Fort Lauderdale
Commercial Real Estate Services, Worldwide

Premier Class A Office Building in the Heart of Doral

8200 NW 41st Street
Doral, FL 33166

Property Overview

- ± 106,765 SF Class A Office Building in the heart of Doral
- Four (4) floors – ± 25,846 SF per floor
- Privately owned & professionally managed
- Full-Service Lease – includes all expenses

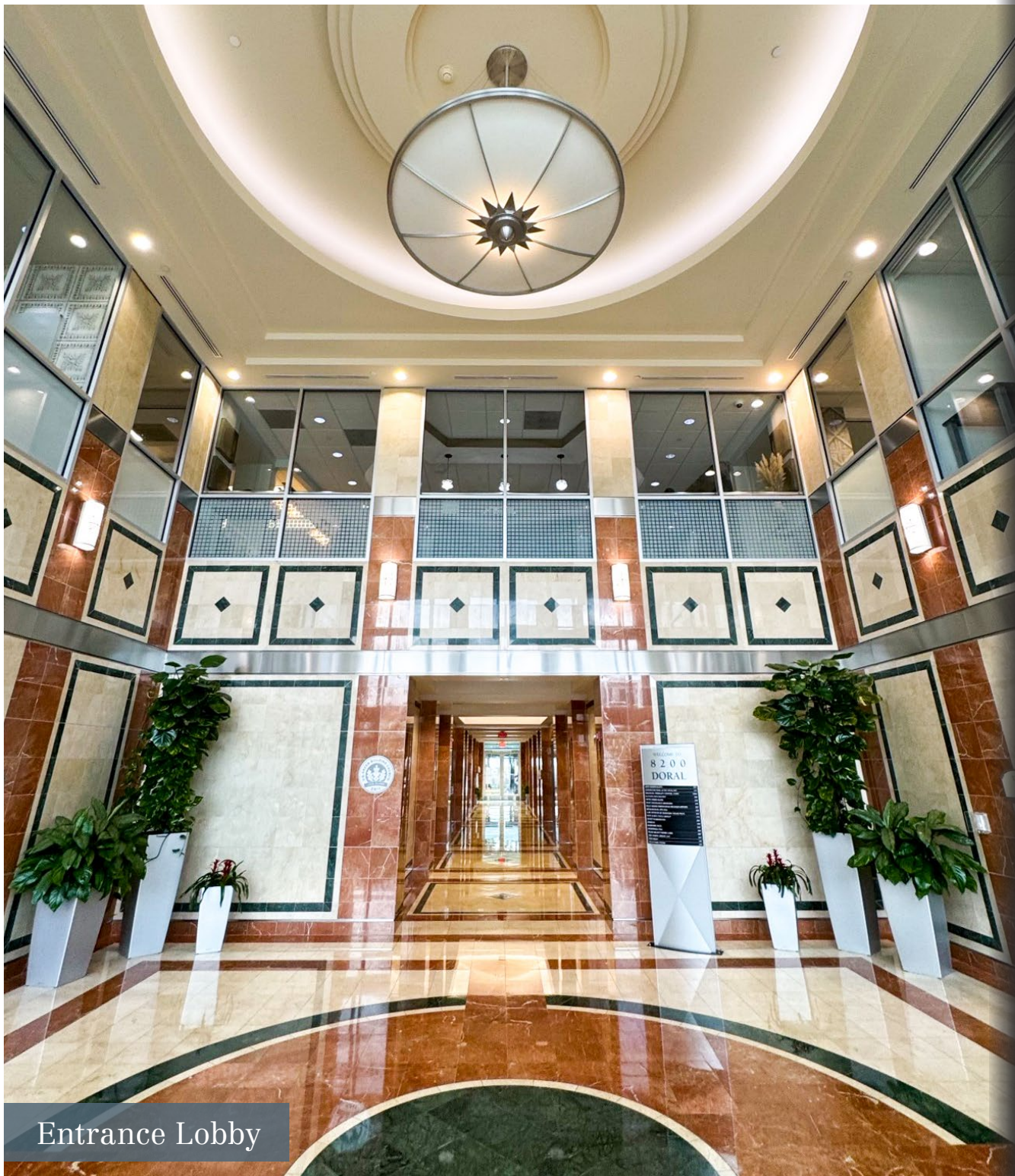




Building Amenities

8200 NW 41st Street
Doral, FL 33166

- Grand entrance with ornate finishes
- Tranquil setting in lush, dynamic business environment with water views available
- Electronic directory in lobby
- Four (4) high-speed elevators
- Secure, gated, surface parking available for tenants; 4/1000 parking ratio
- Covered parking available
- Conference rooms with state-of-the-art video system available for rent
- Vending machines on-site
- 24-hour access
- Awarded LEED Silver certification from the US Green Building Council and EPA's ENERGY STAR rating
- Upgraded to the highest level of Hurricane Resistance



Entrance Lobby

Photos



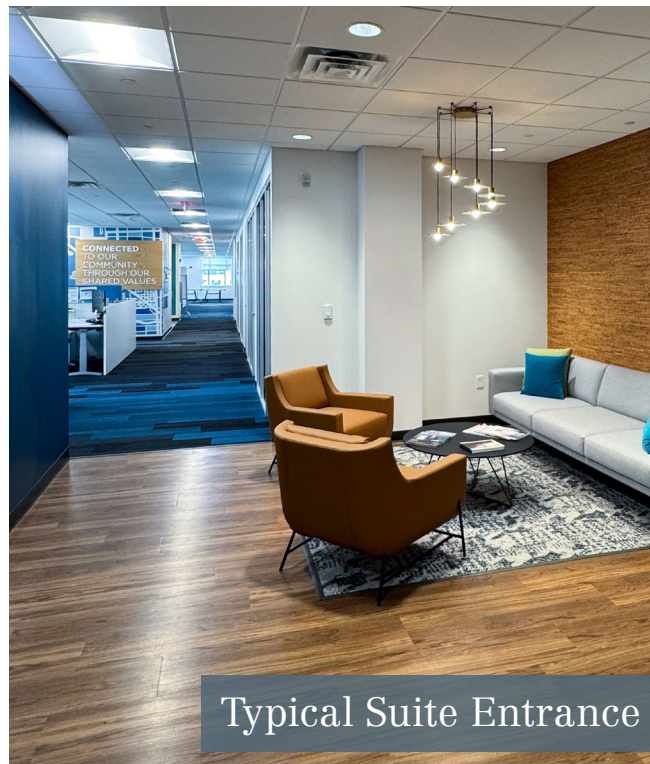
Lobby



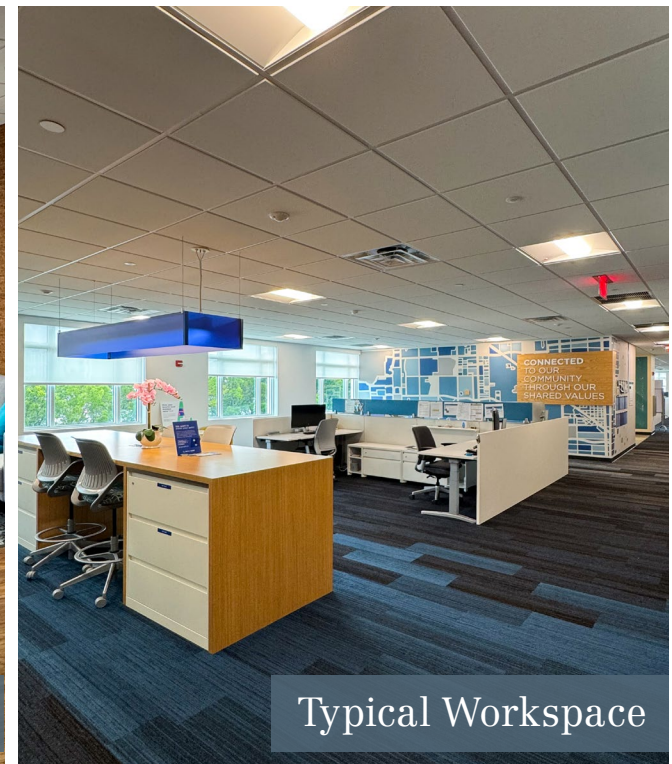
Building Elevators



Hallways



Typical Suite Entrance



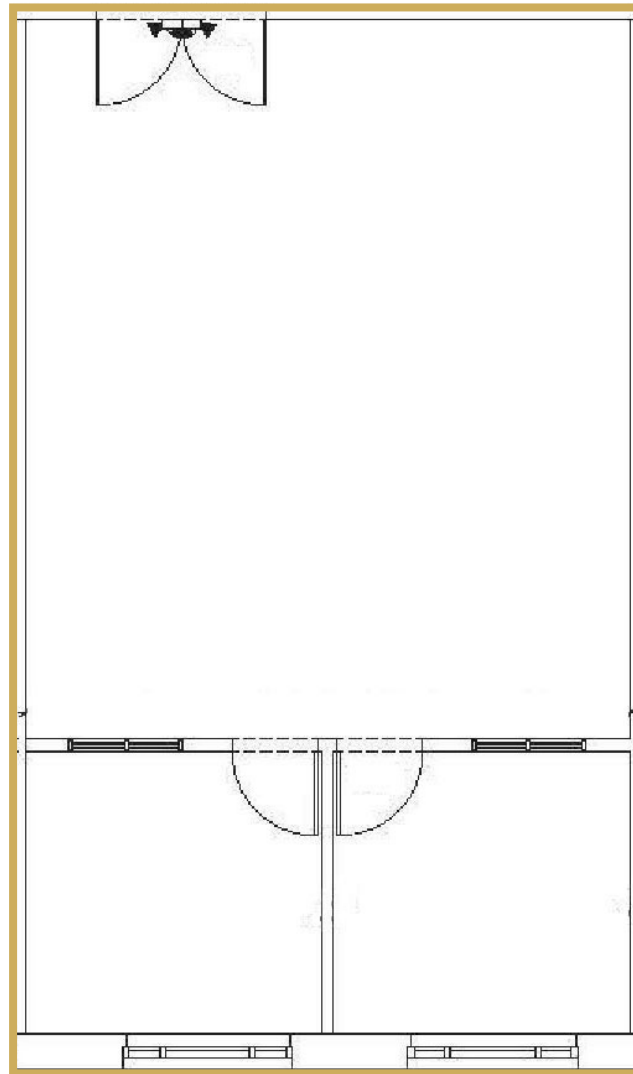
Typical Workspace

Floor Plan

8200 NW 41st Street
Doral, FL 33166

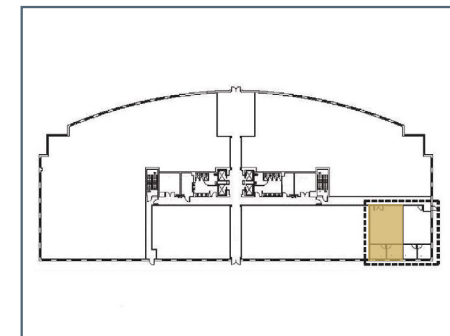
1st Floor
Availability

Suite 145 888 SF



SUITE 145
888 SF

1st Floor



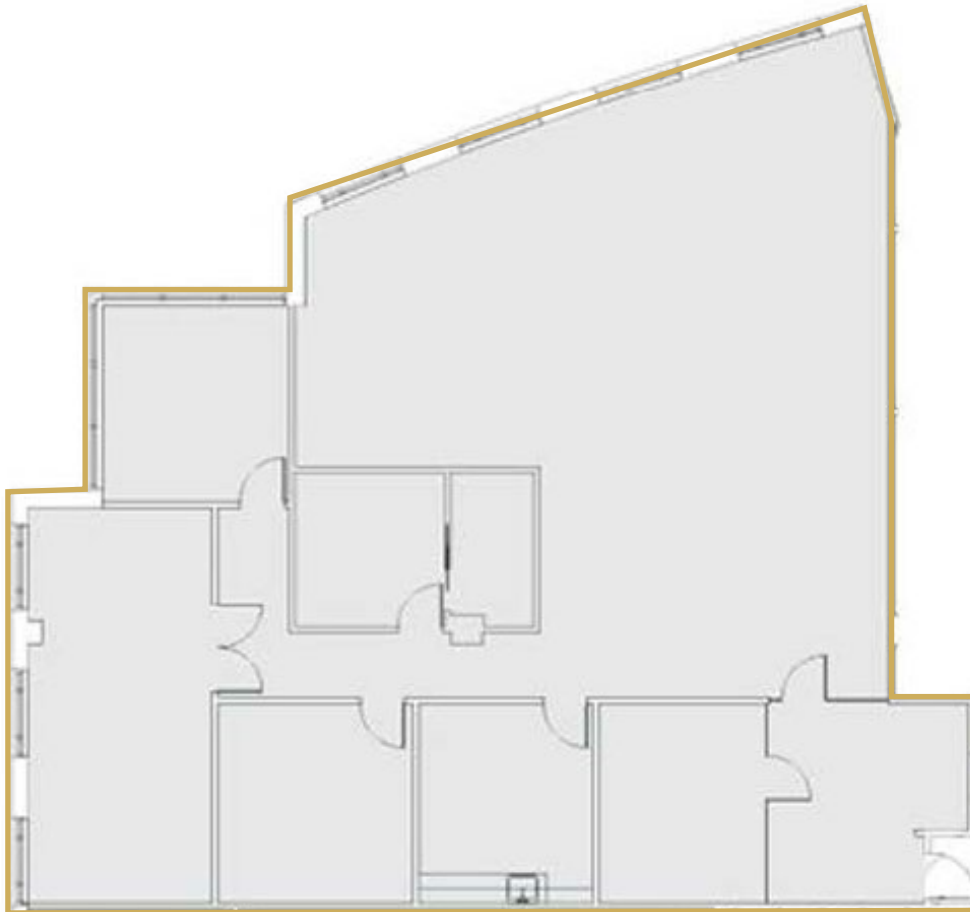


Floor Plan

8200 NW 41st Street
Doral, FL 33166

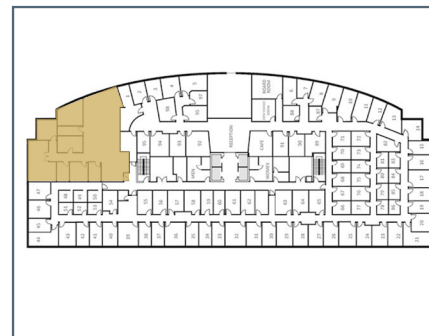
2nd Floor
Availability

Suite 225 3,421 SF



SUITE 225
3,421 SF

2nd Floor



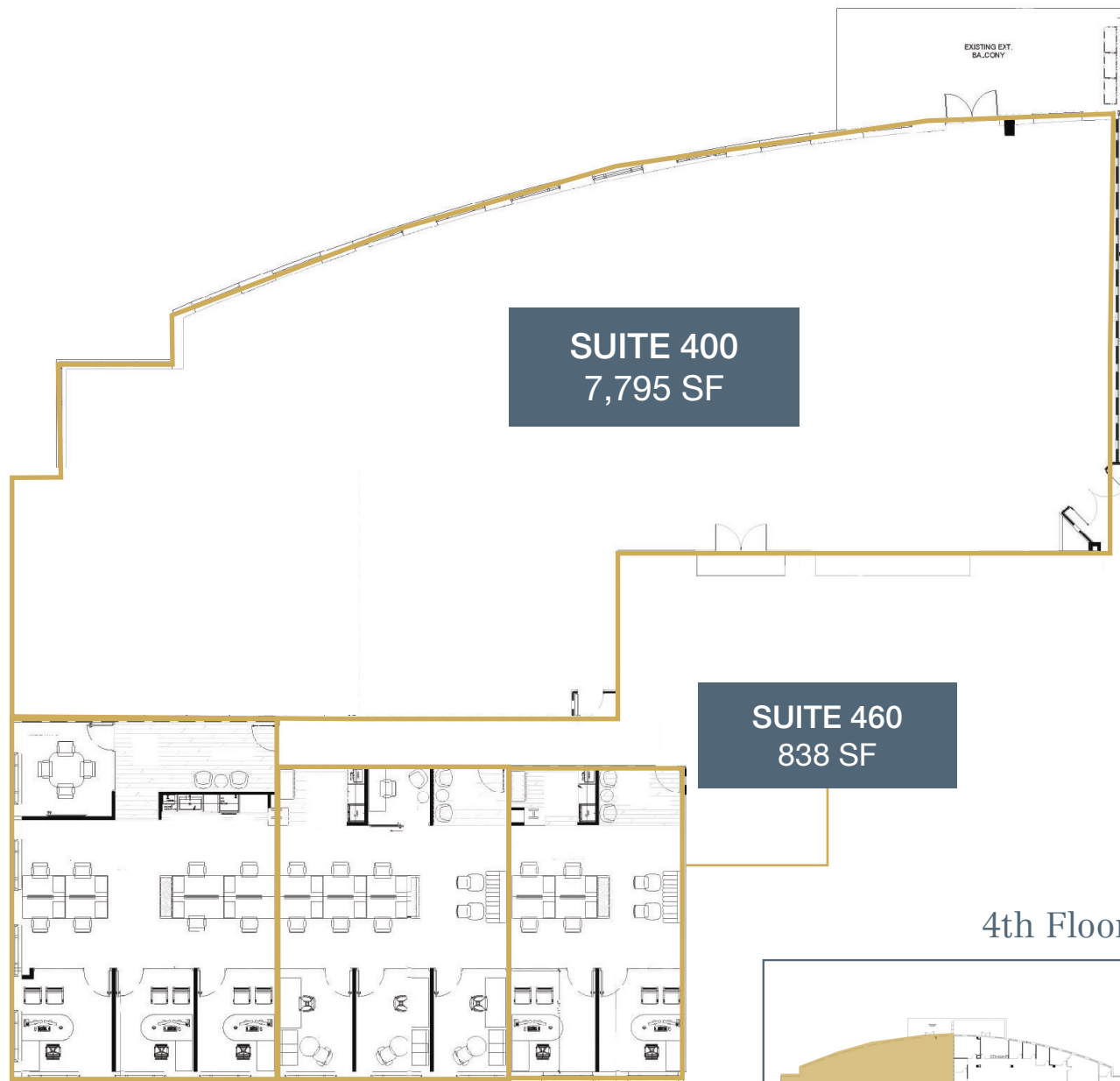


Floor Plan

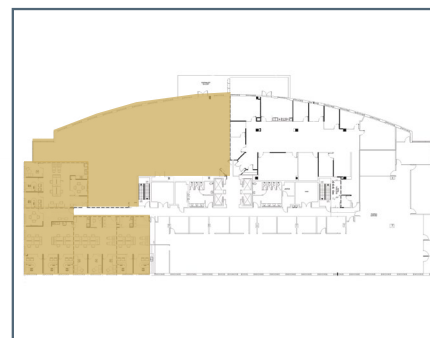
8200 NW 41st Street
Doral, FL 33166

4th Floor Availabilities

| | |
|-----------|----------|
| Suite 400 | 7,795 SF |
| Suite 460 | 838 SF |
| Suite 470 | 1,154 SF |
| Suite 480 | 1,635 SF |



4th Floor



SUITE 480
1,635 SF

SUITE 470
1,154 SF

SUITE 400
7,795 SF

SUITE 460
838 SF



Location Overview

8200 NW 41st Street
Doral, FL 33166


- Prime direct access to major roadways:
 - » Palmetto Expressway (SR 826)
 - » Florida's Turnpike
- Minutes to Miami International Airport (MIA) and the Miami Intermodal Center
- Free ride services like Freebee Doral and the Doral Trolley available
- Within walking distance from Trump National Doral Resort & Golf Course
- Restaurants, retail, and entertainment venues (i.e. CityPlace Doral, Downtown Doral, Cinebistro, etc.) just minutes away

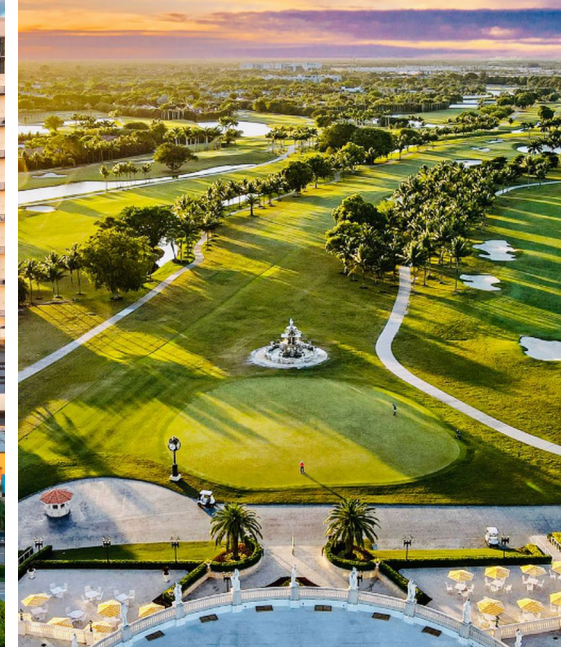
Downtown Doral

± 1 mile 



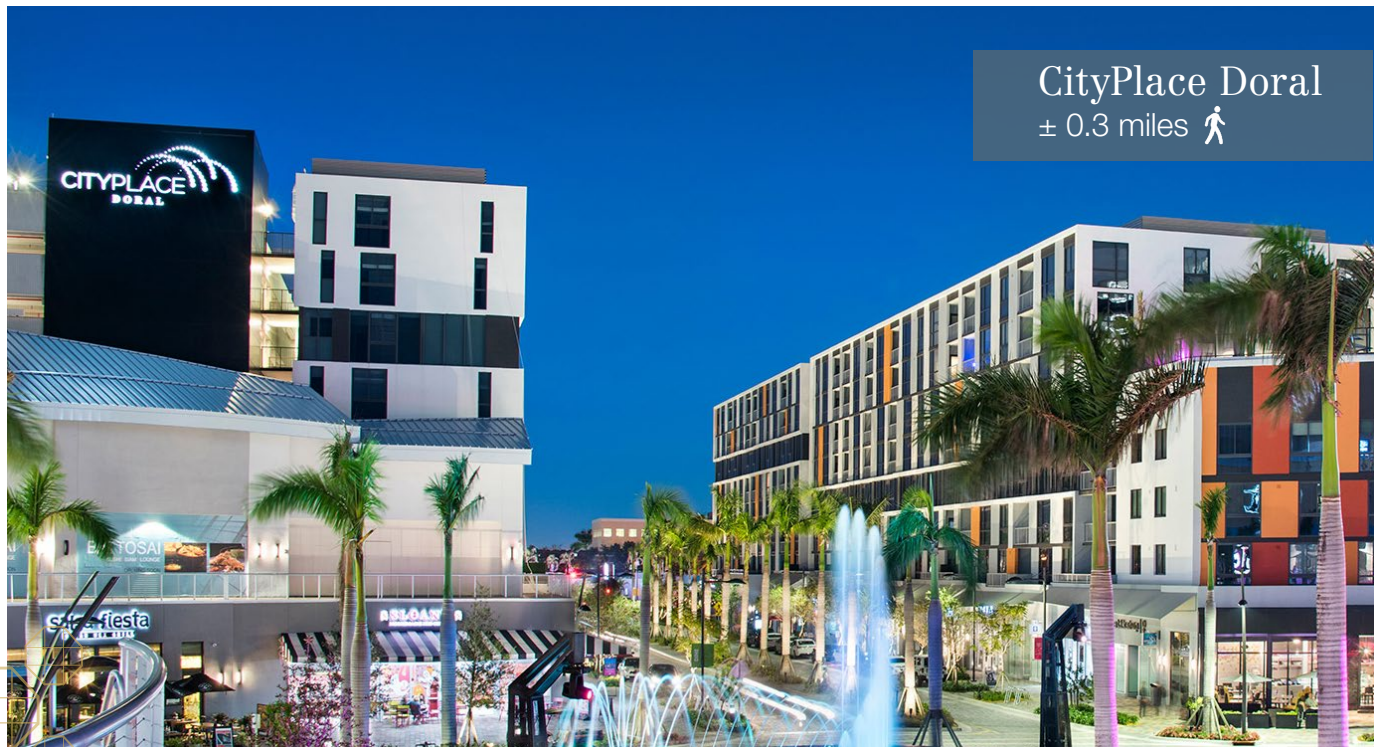
Trump National Doral

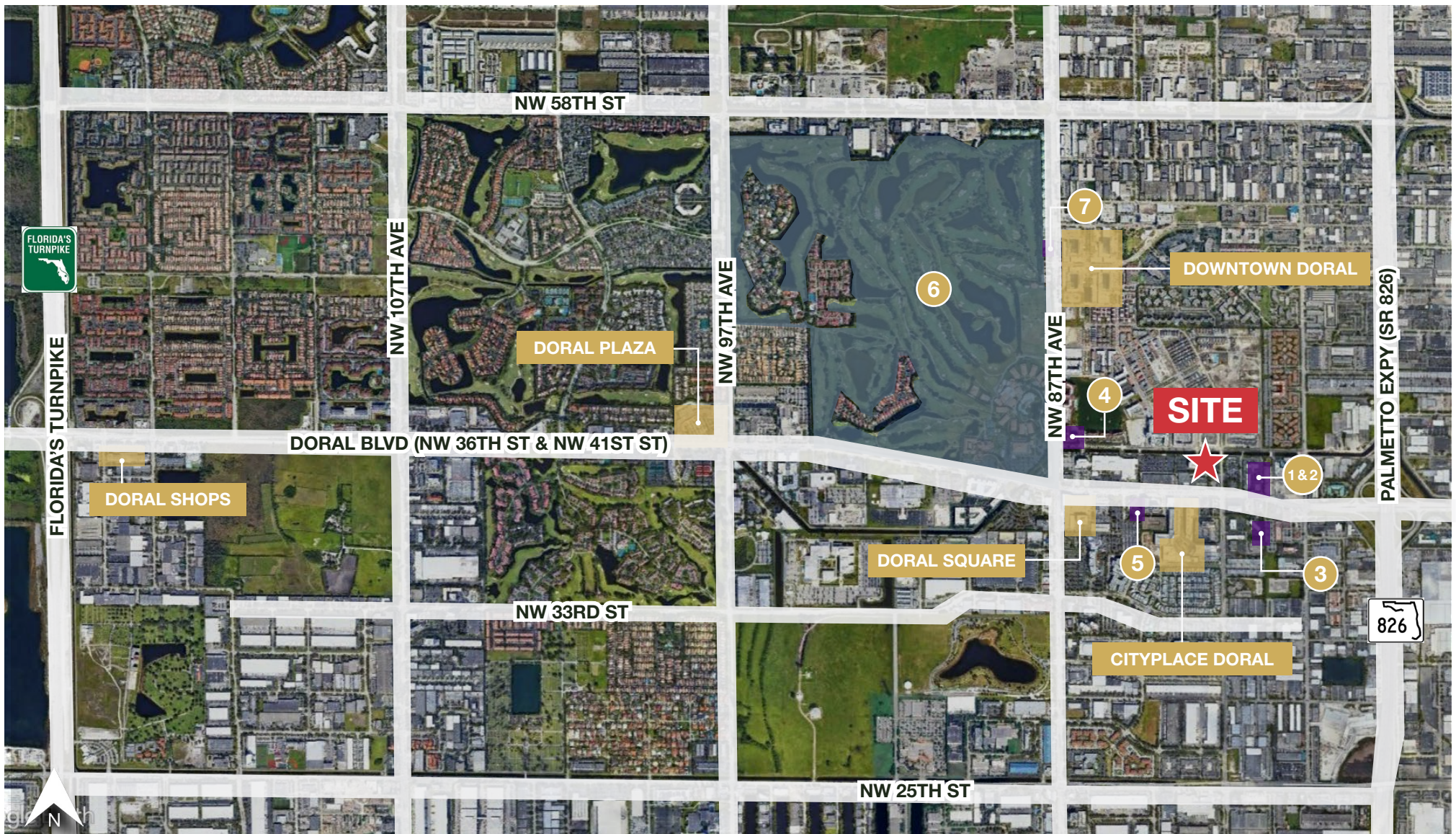
± 0.8 miles 



CityPlace Doral

± 0.3 miles 





Legend



Royal Palm Office Park
8200 NW 41st Street

Retail & Dining

Cooper's Hawk Winery & Restaurant
Bulla Gastrobar
The Fresh Market
First Watch
Starbucks
Marshalls
Homegoods

Hotels

1. Fairfield by Marriott Inn & Suites Miami Airport West/Doral
2. AC Hotel Miami Airport West/Doral
3. Hyatt Place Miami Airport-West/Doral
4. Marriott's Villas at Doral
5. Holiday Inn Express Miami Airport Doral Area by IHG
6. Trump National Doral Miami
7. Provident Doral at The Blue Miami



Royal Palm Office Park



CLASS A OFFICE BUILDING | 8200 NW 41st Street, Doral, FL 33166

<https://naimia-ftl.com/properties/#/royal-palm-office-park>



For More Information

Gabriel Guillen

+1 786 697 6214

gguillen@naimiami.com

Gabriel Garcia-Menocal, SIOR

+1 786 433 3148

ggarcia-menocal@naimiami.com

Jeremy S. Larkin

+1 786 260 0402

jlarkin@naimiami.com

