

M E R I D I A N

147 S. CHERRY STREET, SUITE 200 | WINSTON-SALEM, NC 27101 | P 336.722.1986 | F 336.723.3173 | MERIDIANREALTY.COM

Flex | Industrial

# 2314 Cragmore Rd

Winston-Salem, NC 27107



2314 Cragmore Road offers a versatile commercial opportunity in a convenient Winston-Salem location. The approximately 5,000± SF building is well suited for industrial, warehouse, contractor, or flex-space users and features a functional mix of office and warehouse space. The property offers easy access to major transportation routes, ample parking, and potential for additional outdoor storage or laydown area, making it an attractive option for both owner-users and investors.

For more information:

**Jesse H. Jarrell, CCIM**

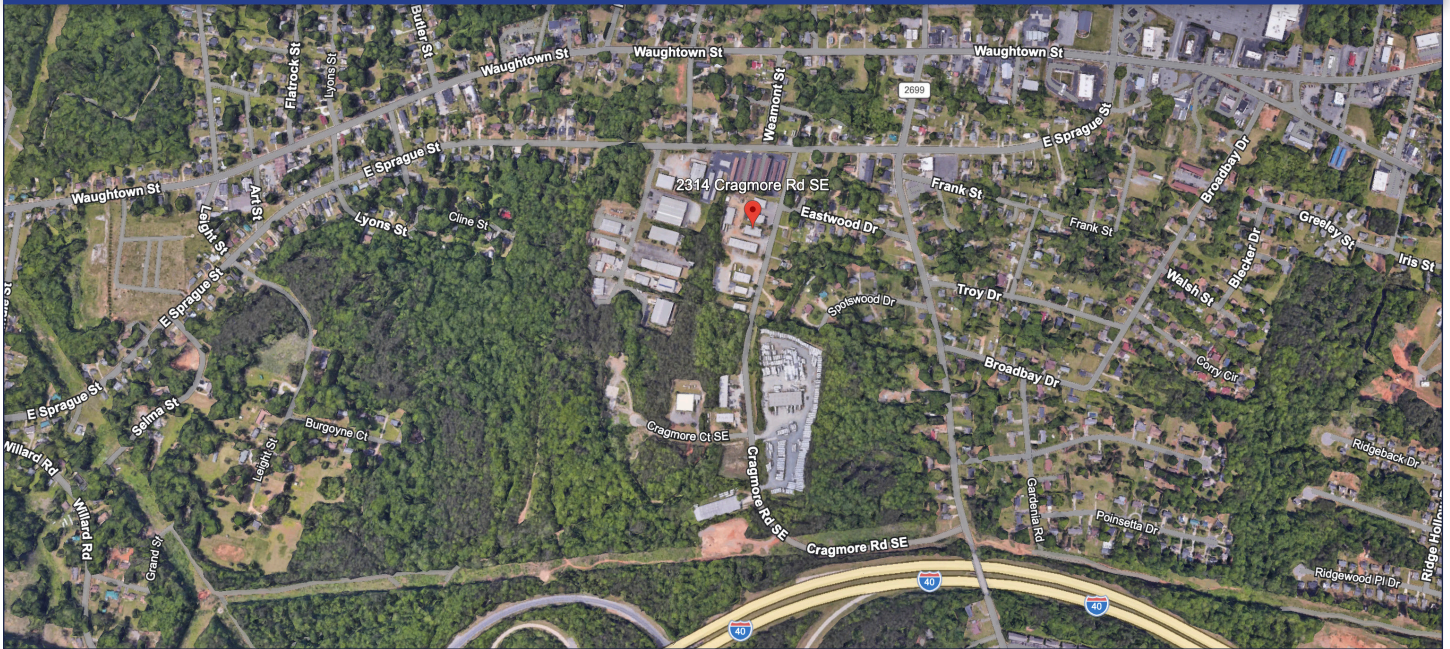
[jjarrell@meridianrealty.com](mailto:jjarrell@meridianrealty.com)

336.480.2324

**FOR SALE: \$350,000.00**

WWW.MERIDIANREALTY.COM

## AERIAL



### Property Details

- Central Winston-Salem Location
- LI Zoning
- 5,000± SF with additional conditioned second floor storage
- For Sale: \$350,000.00



No warranty or representation (express or implied) is made as to the accuracy or completeness of the information set forth herein. All information is submitted subject to errors, omissions, change of price, prior lease or sale, and withdrawal without notice. All marketing material produced by the Meridian Realty Group is proprietary. Any reproduction is expressly prohibited.



THE MERIDIAN REALTY GROUP | 147 S. CHERRY STREET, SUITE 200 | WINSTON-SALEM, NC 27101  
P 336.722.1986 | F 336.723.3173