

1101

SE 37th St

Grimes, IA

**15,984 SF
FOR LEASE**



CBRE

EXECUTIVE SUMMARY

1101 SE 37th St is a functional industrial property located in Grimes, an established northwest industrial submarket of the Des Moines MSA. The building is suitable for a range of uses, including warehousing, light manufacturing, and service operations, with additional outdoor storage capabilities. With convenient access to major transportation routes and the broader Des Moines metro, the property offers an efficient and practical solution for businesses seeking dependable industrial space.

AVAILABLE SPACE

Lease Rate	\$11.00 NNN
Building SF	23,484 SF
Available SF	15,984SF
Office/Mezzanine	3,800 SF 9 Private Offices Conference Room Training Room
Outdoor Storage	5 + Acres (Gated/Fenced)
Covered Ext Dock	2 (12' x 10') Doors
Drive-Ins	3 1 (12' x 14') 2 (12' x 12')
Clear Height	14' - 18'
Power	3-Phase, 480 V, 225+ Amps



INTERIORS



EXTERIORS



AERIAL

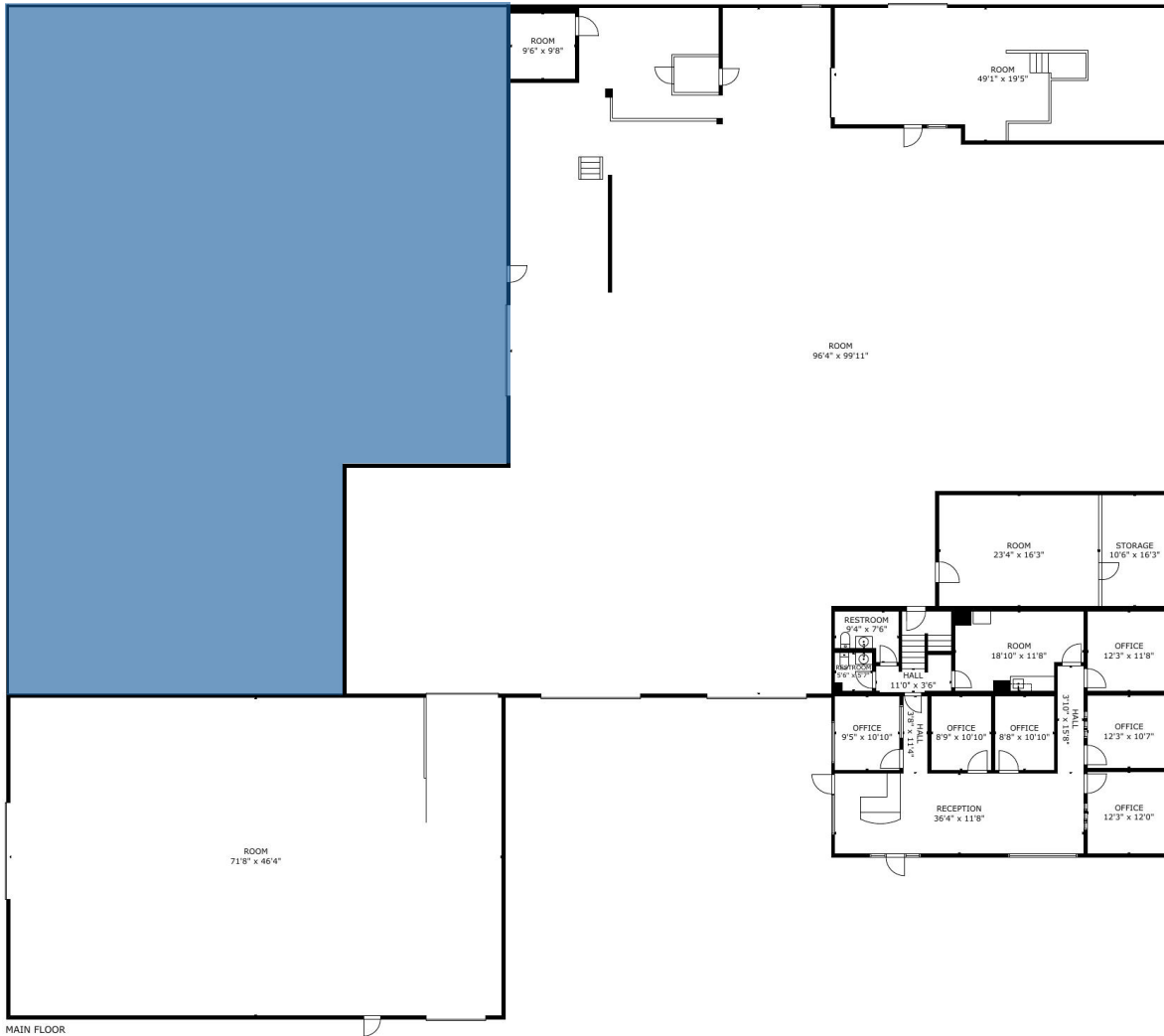


Currently Occupied = Shaded Area

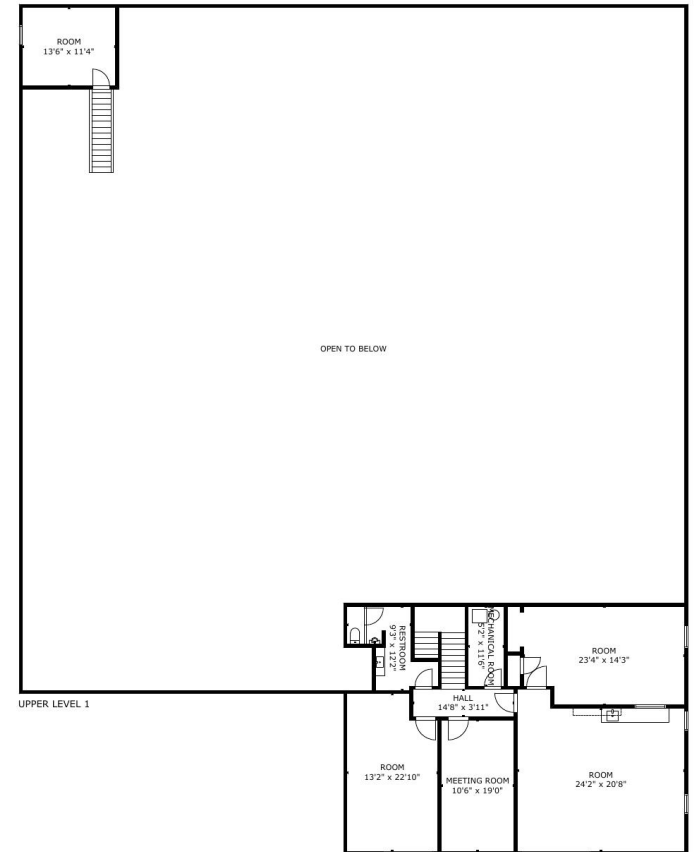
FLOOR PLAN

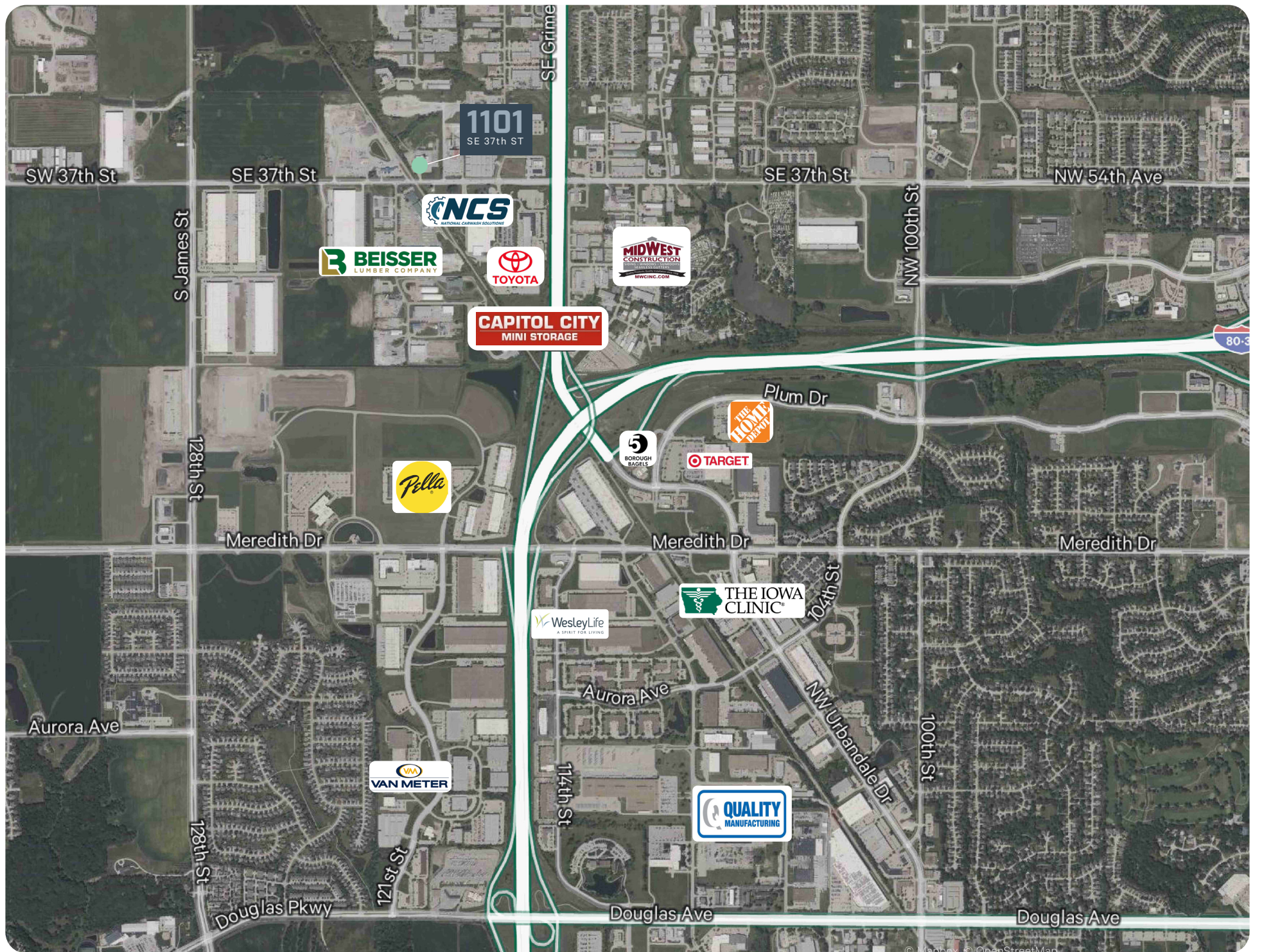
Currently Occupied = Shaded Area

MAIN FLOOR



UPPER LEVEL





1101

SE 37th ST

Grimes, IA



Harrison Kruse, SIOR, CCIM

First Vice President

+1 515 556 9168

harrison.kruse@cbre.com

Licensed in the State of Iowa

Ned Turner

Senior Associate

+1 515 371 0499

ned.turner@cbre.com

Licensed in the State of Iowa

© 2026 CBRE, Inc. All rights reserved. This information has been obtained from sources believed reliable but has not been verified for accuracy or completeness. You should conduct a careful, independent investigation of the property and verify all information. Any reliance on this information is solely at your own risk. CBRE and the CBRE logo are service marks of CBRE, Inc. All other marks displayed on this document are the property of their respective owners, and the use of such logos does not imply any affiliation with or endorsement of CBRE. Photos herein are the property of their respective owners. Use of these images without the express written consent of the owner is prohibited.

CBRE