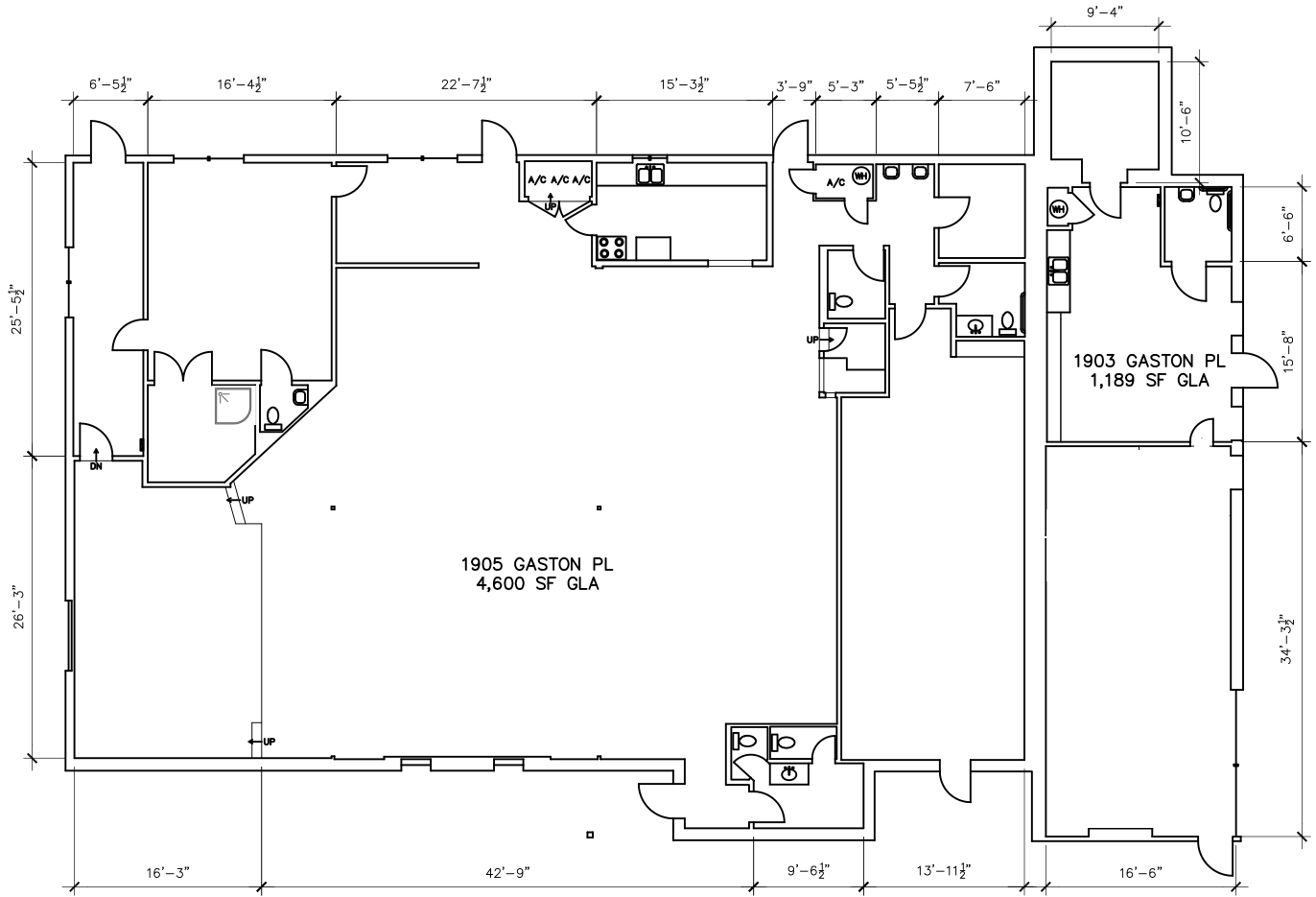
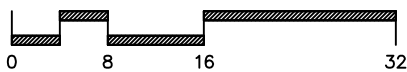


NOTE:

DIMENSIONS ARE TO SHOW ROOM SIZES.
 SQUARE FOOTAGE CALCULATIONS ARE DONE
 TO BOMA STANDARDS.



SCALE: 1/16" = 1'-0"



Drawing for:
 Duncan Park Capital
 904 West Ave., Ste. 102
 Austin, TX 78701

1903-1905
 GASTON PLACE DRIVE
 AUSTIN, TEXAS 78723
 GROSS LEASEABLE AREA: 5,789 S.F.

THE MEASUREMENTS, FLOOR PLANS,
 AND CALCULATIONS ARE ACCURATE
 USING BOMA MEASUREMENT
 STANDARDS FOR RETAIL BUILDINGS.
 ANSI/BOMA Z65.5 - 2020
 Project No.: 2272.01
 Date: July 13, 2022
 ©2022

DIMENSIONS
 FLOOR PLANS
 Austin, Texas
 dimensionsfloorplans.com
 Phone: (512)342-0114