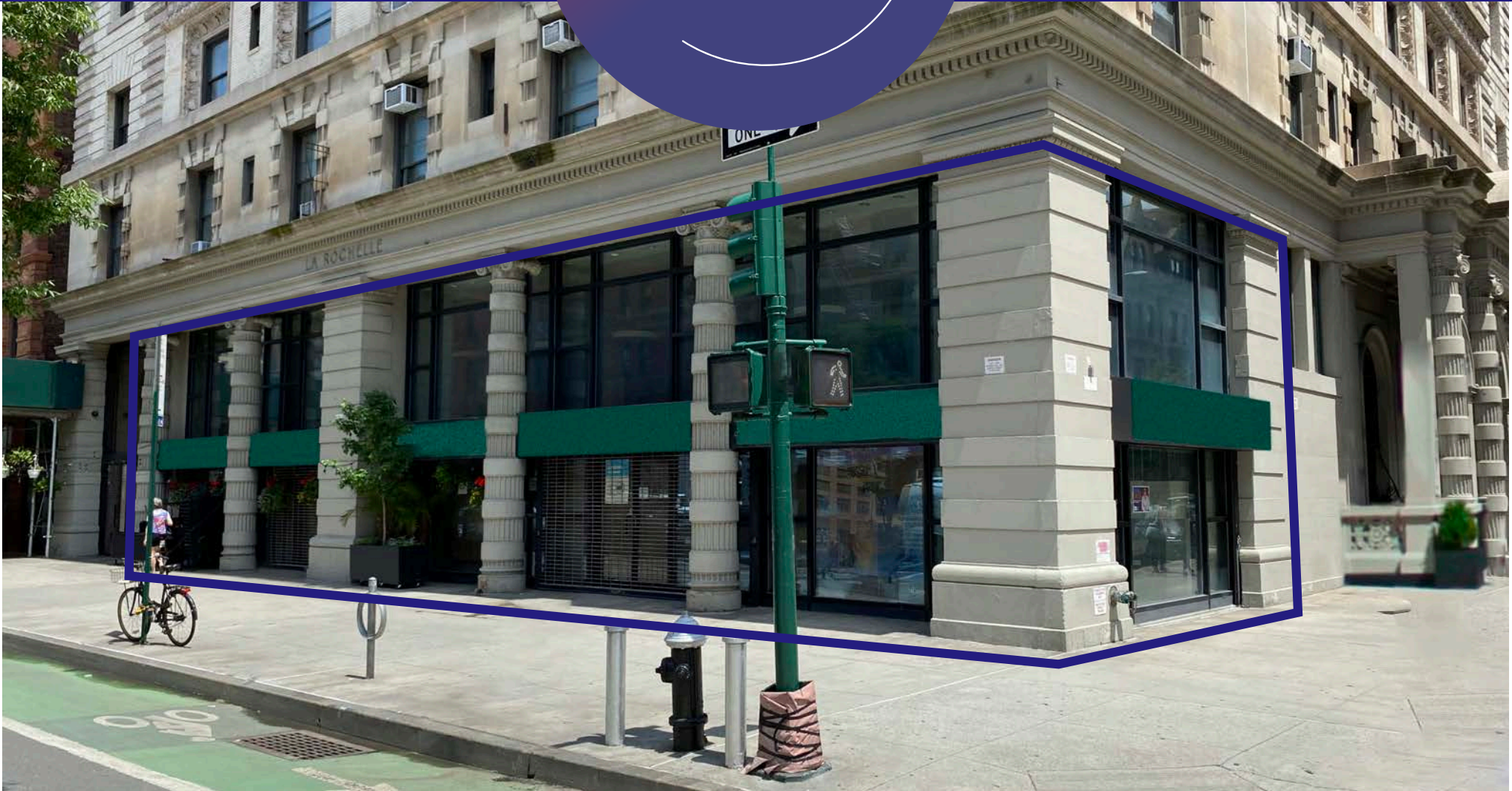


COLUMBUS AVENUE
325

As Exclusive Leasing Agent for the ownership, we are pleased to offer the following prime retail space for lease:

NORTHEAST CORNER OF 75TH STREET



PREMISES:

Ground Floor: 4,556 SF
Mezzanine: 2,659 SF
Lower Level: 4,233 SF

TOTAL: 11,448 SF

FRONTAGE:

88 feet on Columbus
30 feet on W 75th

CEILING HEIGHTS:

Ground Floor: 20 Feet
Lower Level: 11 Feet

AVAILABLE:

Immediate

ASKING RENT:

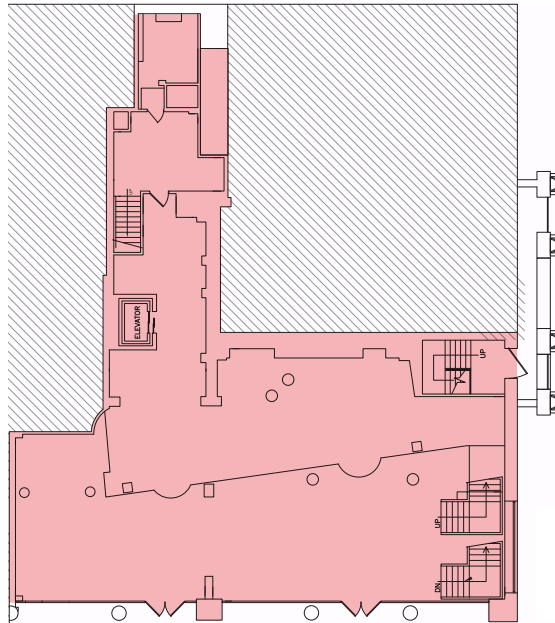
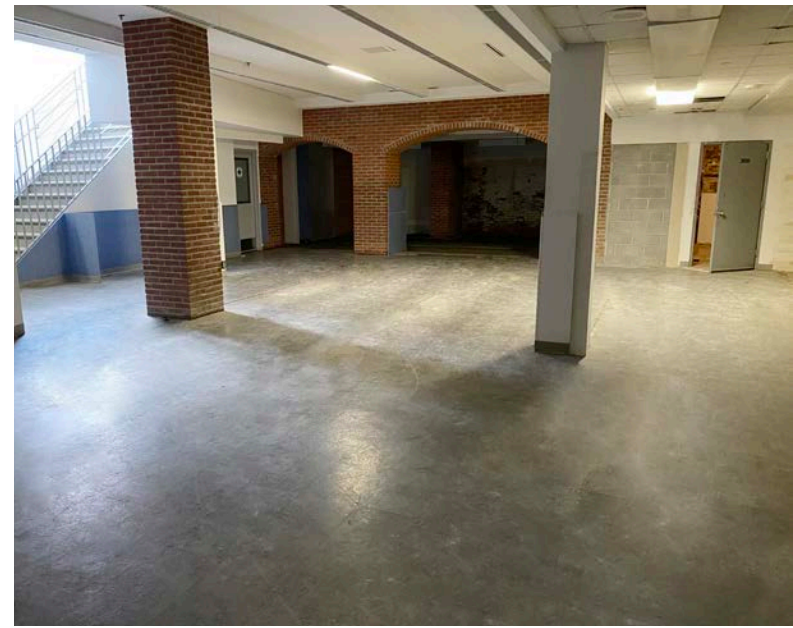
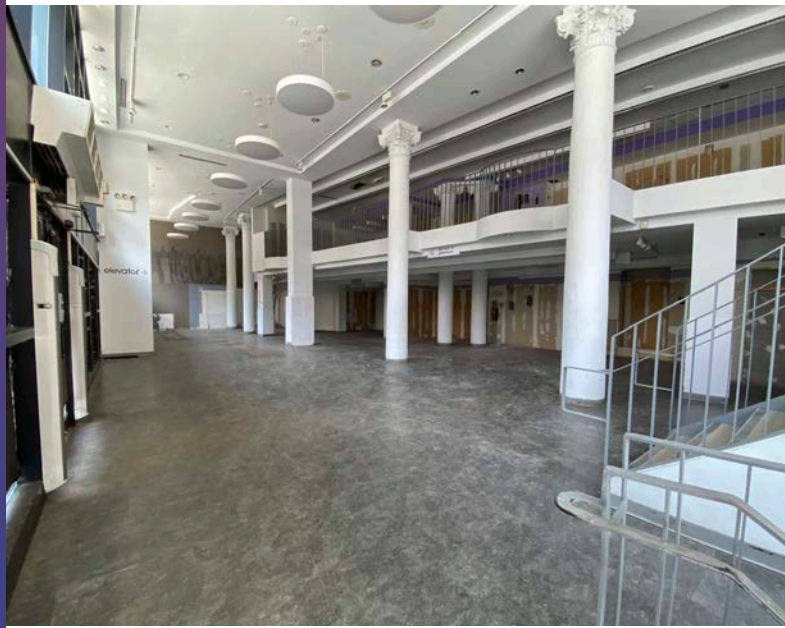
Upon Request

TERM:

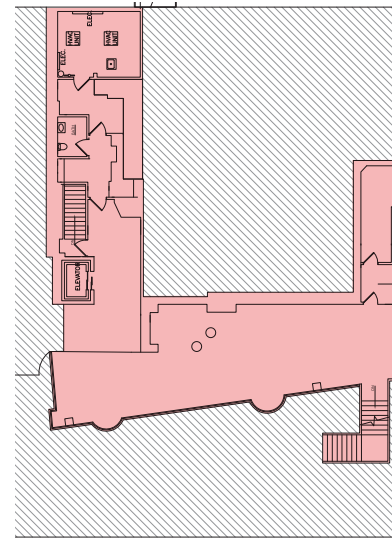
Long Term

COMMENTS:

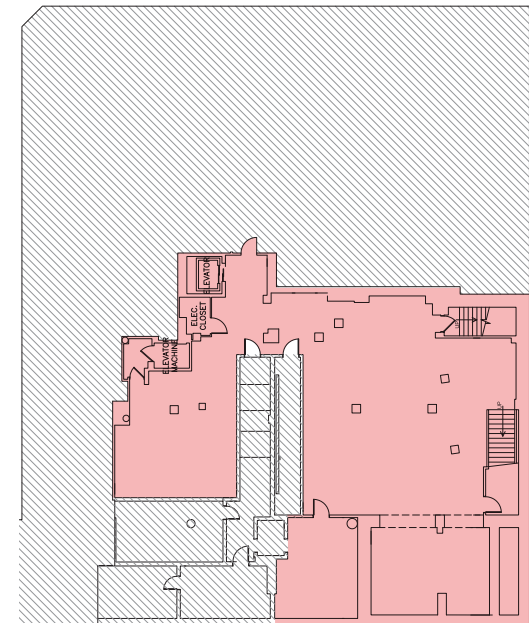
- Vertical in place
- Selling Lower Level
- Venting possible
- Close proximity to Central Park and the 1,2, and 3 subway lines
- Dense residential population just 2 blocks from The Museum of Natural History
- Reasonable divisions considered
- Formerly Duane Reade



Ground Floor



Mezzanine



Lower Level

NEIGHBORS:

- Eileen Fisher
- Patagonia
- Rituals
- Scotch & Soda
- Jonathan Adler
- Liana
- A Tempo
- Variazioni
- Pure Barre
- Celso de Lemos
- Shake Shack
- La Pecora Bianca
- Sushi of Gari
- ASSET Restaurant
- Crumbl
- The Mermaid Inn

FOR MORE INFORMATION CONTACT

ANDREW GOLDBERG
andrew.goldberg@cbre.com

JARED E. LACK
212.984.6507
jared.lack@cbre.com



© 2023 CBRE, Inc. All rights reserved. This information has been obtained from sources believed reliable, but has not been verified for accuracy or completeness. You should conduct a careful, independent investigation of the property and verify all information. Any reliance on this information is solely at your own risk. CBRE and the CBRE logo are service marks of CBRE, Inc. All other marks displayed on this document are the property of their respective owners, and the use of such logos does not imply any affiliation with or endorsement of CBRE.

AMSTERDAM AVENUE

COLUMBUS AVENUE

CENTRAL PARK WEST

