

**BASIS OF BEARINGS**

THE BASIS OF BEARINGS FOR THIS MAP  
 TAKEN FROM 28 SURVEYS 31-38  
 (CCS ZONE II, NAD 83)  
 (THE BEARINGS SHOWN ON 30 PM 56  
 ROTATED 1° 13' 13" COUNTERCLOCKWISE.)

**BENCHMARK**

CITY CONTROL MONUMENT # 9650 AT THE INTERSECTION  
 OF SACRAMENTO STREET AND COGHAN STREET.  
 BENCHMARK ELEV= 35.33' (NAVD88)

**NOTES**

PARCELS 0051-100-090 AND 0051-100-120 ARE CITY PARCELS,  
 AND ARE SHOWN FOR REFERENCE ONLY.

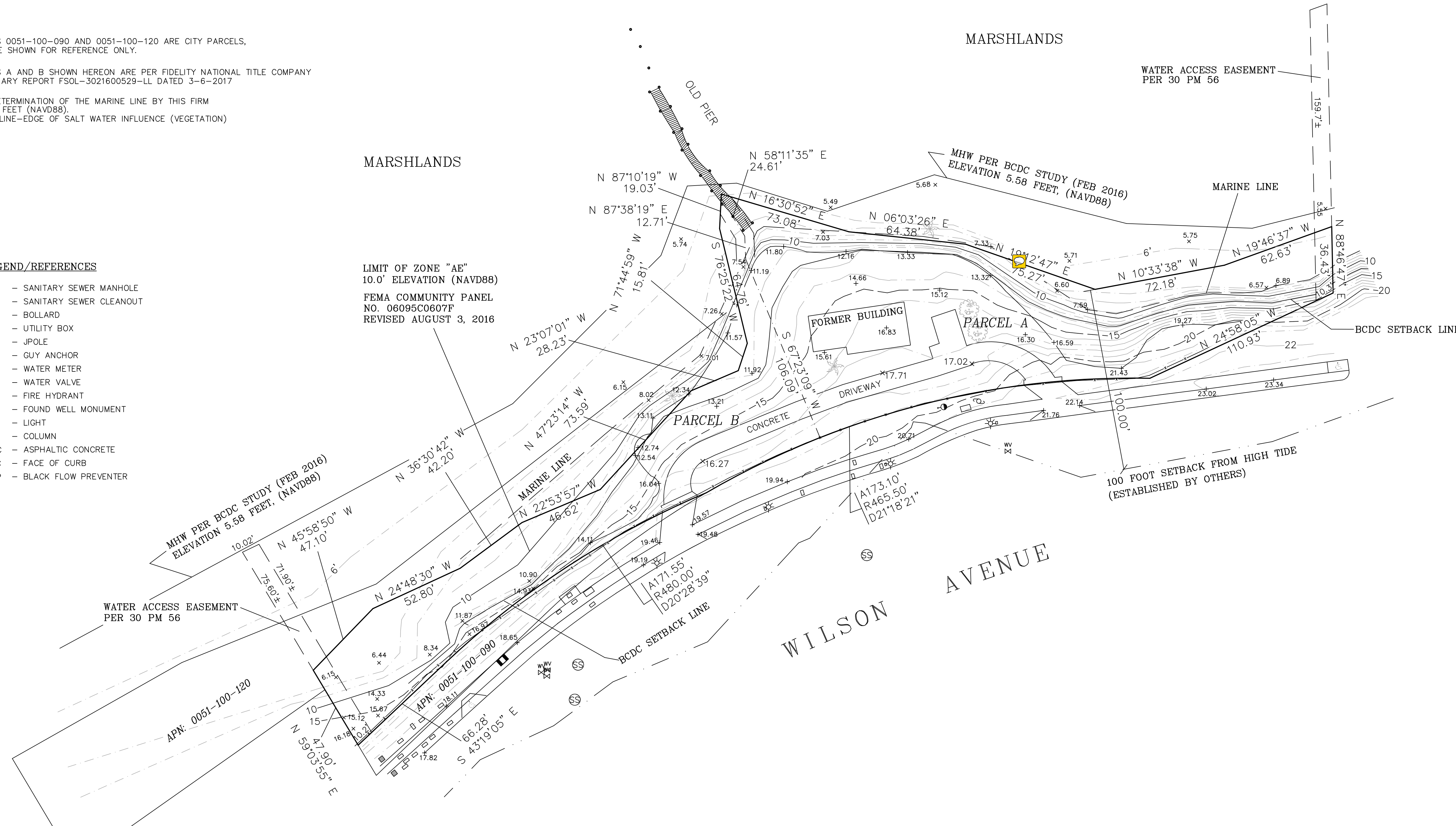
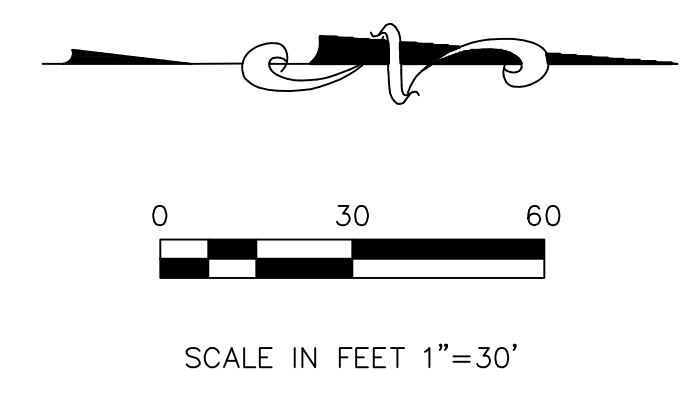
PARCELS A AND B SHOWN HEREON ARE PER FIDELITY NATIONAL TITLE COMPANY  
 PRELIMINARY REPORT FSOL-3021600529-LL DATED 3-6-2017

FIELD DETERMINATION OF THE MARINE LINE BY THIS FIRM  
 AT 7.60 FEET (NAVD88).  
 MARINE LINE-EDGE OF SALT WATER INFLUENCE (VEGETATION)

**LEGEND/REFERENCES**

- ⊙ - SANITARY SEWER MANHOLE
- ⊙ - SANITARY SEWER CLEANOUT
- - BOLLARD
- - UTILITY BOX
- ⊖ - JPOLE
- ⊙ - GUY ANCHOR
- ⊙ - WATER METER
- ⊙ - WATER VALVE
- ⊙ - FIRE HYDRANT
- ⊙ - FOUND WELL MONUMENT
- ⊙ - LIGHT
- - COLUMN
- A/C - ASPHALTIC CONCRETE
- F/C - FACE OF CURB
- BFP - BLACK FLOW PREVENTER

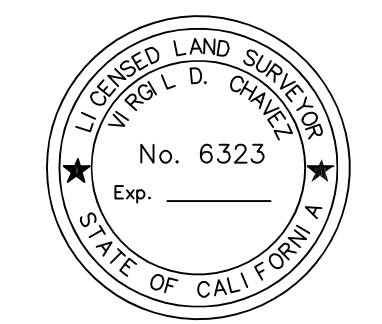
LIMIT OF ZONE "AE"  
 10.0' ELEVATION (NAVD88)  
 FEMA COMMUNITY PANEL  
 NO. 06095C0607F  
 REVISED AUGUST 3, 2016



**PARCEL AREAS**

PARCEL A: 21,529 S.F.  
 PARCEL B: 13,893 S.F.  
 TOTAL AREA: 35,422 S.F.

NET AREA: 21,157 S.F.  
 (PER SEC. 16.701, CITY  
 OF VALLEJO ZONING CODE)



Virgil Chavez

UPDATED: 2/8/2023

**TOPOGRAPHIC SURVEY**  
 913 AND 915 WILSON AVENUE  
 LOCATED IN THE CITY OF VALLEJO  
 COUNTY OF SOLANO, STATE OF CALIFORNIA

**VIRGIL CHAVEZ LAND SURVEYING**  
 1100 ROSE DRIVE, BENICIA, CALIF. 94510  
 PHONE: (707) 553-2476

DATE:	MARCH, 2020
DRAWN BY:	RRS
SCALE:	1" = 30'
CHECKED:	VC
PROJ. MGR:	VC DC FILE: 392600
PROJ. NO. 3926-00	CAD FILE: 392600

SHEET NO.  
 1  
 OF  
 1 SHEETS