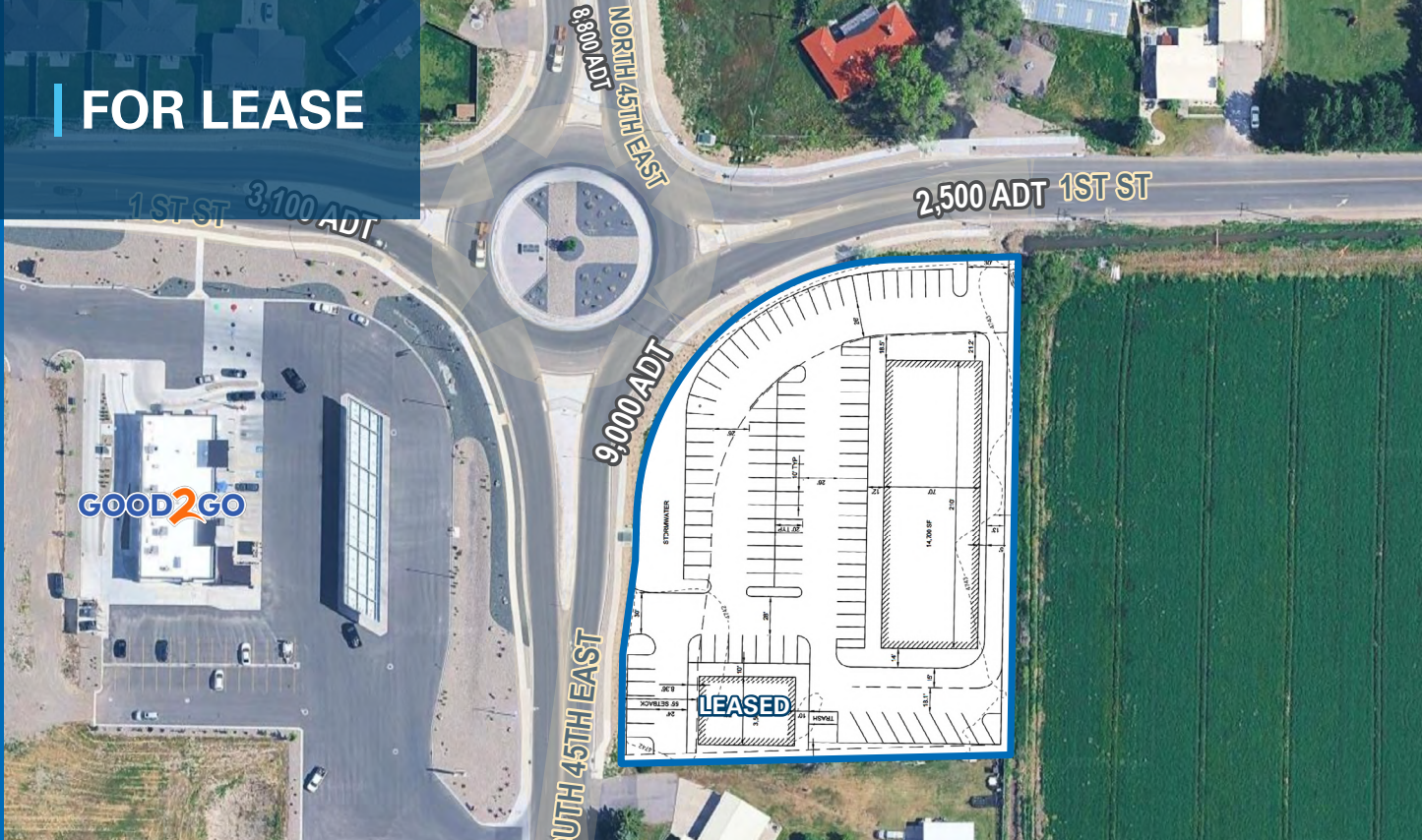


# CROWLEY ROAD

FOR LEASE



## PROPERTY DETAILS

Crowley Road, Ammon, Idaho 83401

- Great visibility from 1st St. & Crowley Rd.
- 14,700 SF Available for pre-lease
- Construction schedule TBD
- Retail or professional office- Drive thru options available
- Close to Thunder Ridge High School
- Lease Rate: Contact Agent

## 2025 DEMOS



### EST. POPULATION

1 MILE » **7,702**  
3 MILE » **50,097**  
5 MILE » **92,264**



### EST. HOUSEHOLDS

1 MILE » **2,496**  
3 MILE » **16,736**  
5 MILE » **32,528**



### EST. AVERAGE HH INCOME

1 MILE » **\$113,996**  
3 MILE » **\$106,794**  
5 MILE » **\$103,746**

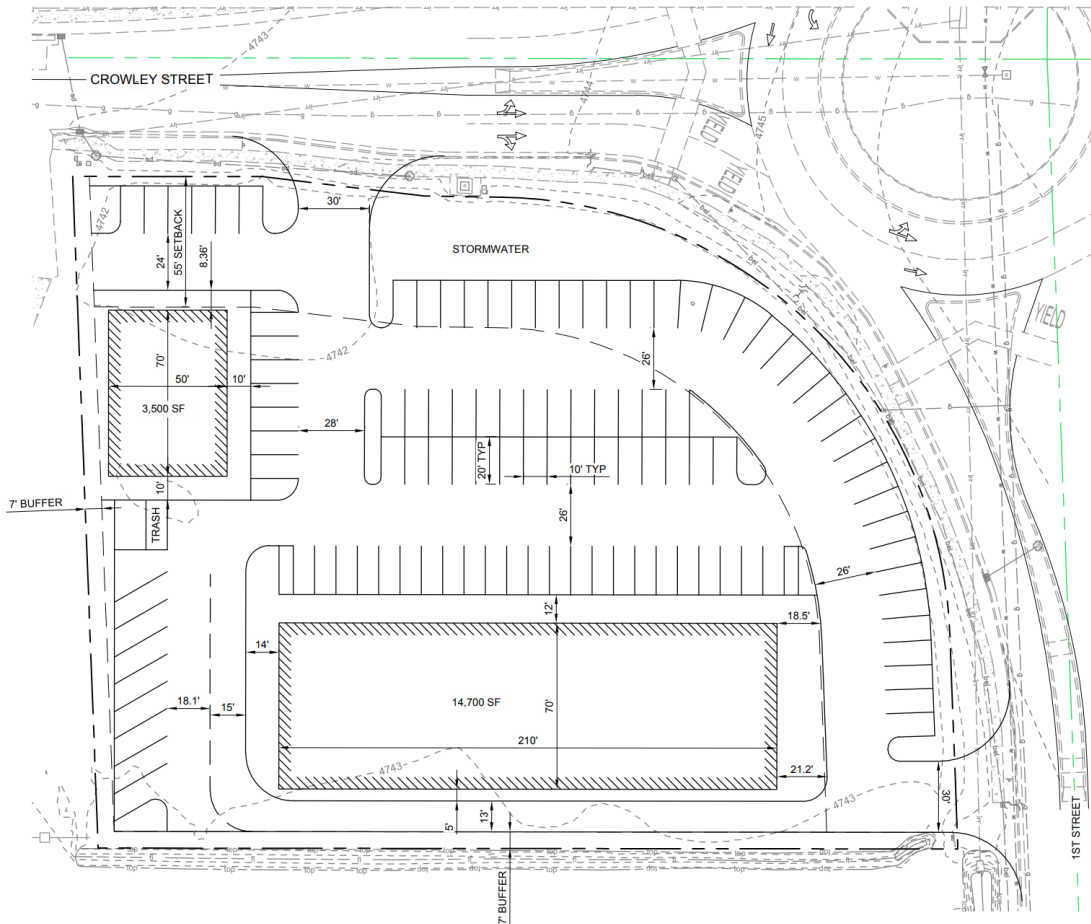
# NEWMARK

Mountain West

**DUSTIN MORTIMER**  
dmortimer@newmarkmw.com  
direct 208.874.0230  
[View Profile](#)

**NATE CLARK**  
nate.clark@newmarkmw.com  
direct 208.757.7477  
[View Profile](#)

**FULL SERVICE  
COMMERCIAL REAL ESTATE**  
482 Constitution Way, Suite 211  
Idaho Falls, ID 83402  
Office 208.874.0230  
[www.newmarkmw.com](http://www.newmarkmw.com)



**NEWMARK**

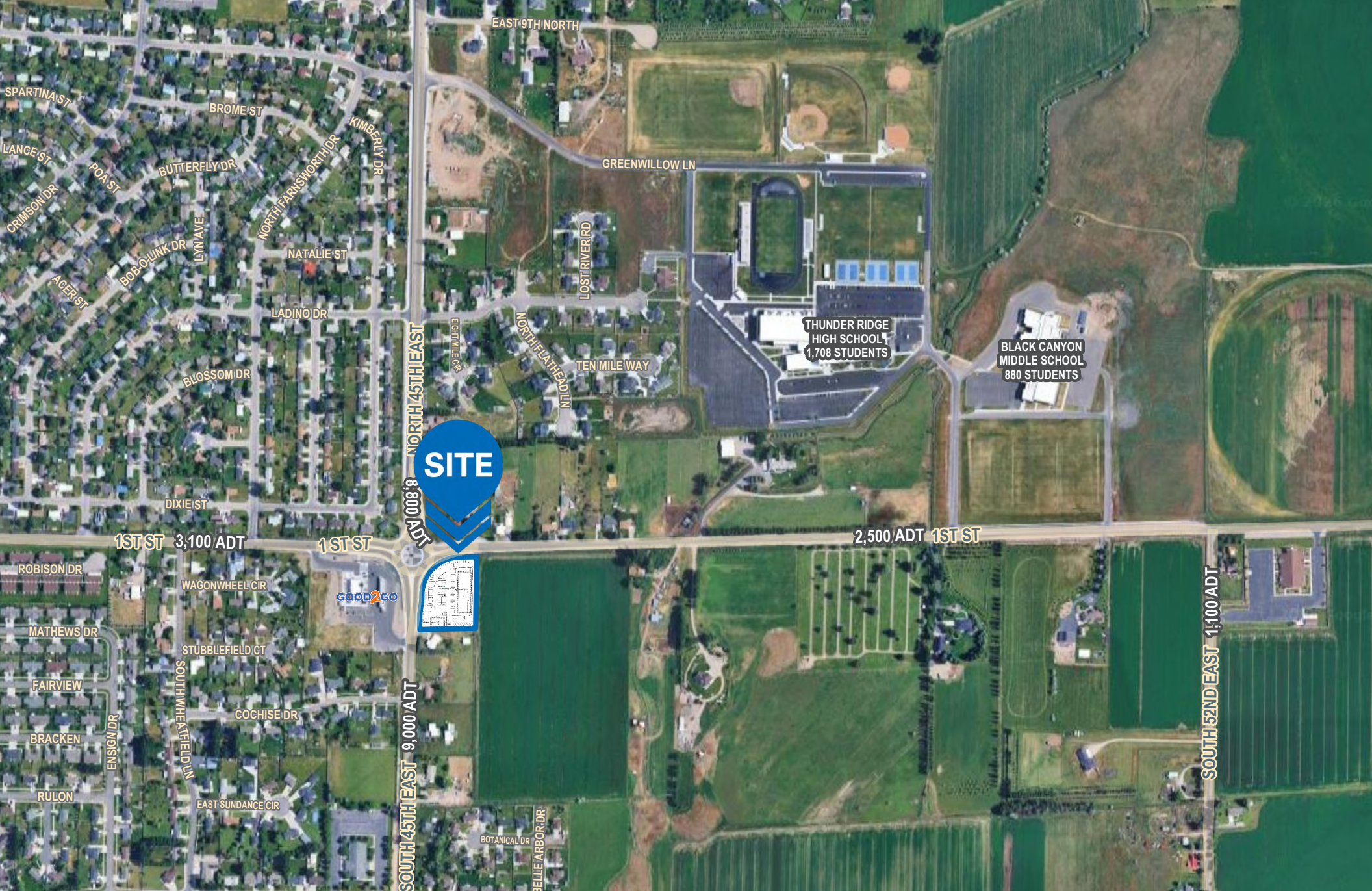
**MOUNTAIN WEST**

**DUSTIN MORTIMER**  
 dmortimer@newmarkmw.com  
 direct 208.874.0230  
[View Profile](#)

**NATE CLARK**  
 nate.clark@newmarkmw.com  
 direct 208.757.7477  
[View Profile](#)



**FULL SERVICE  
 COMMERCIAL REAL ESTATE**  
 482 Constitution Way, Suite 211  
 Idaho Falls, ID 83402  
 Office 208.874.0230  
[www.newmarkmw.com](http://www.newmarkmw.com)



**DUSTIN MORTIMER**  
 dmortimer@newmarkmw.com  
 direct 208.874.0230  
[View Profile](#)

**NATE CLARK**  
 nate.clark@newmarkmw.com  
 direct 208.757.7477  
[View Profile](#)

**FULL SERVICE  
 COMMERCIAL REAL ESTATE**  
 482 Constitution Way, Suite 211  
 Idaho Falls, ID 83402  
 Office 208.874.0230  
[www.newmarkmw.com](http://www.newmarkmw.com)