



JUNCTION KROG DISTRICT

667 AUBURN AVE NE
ATLANTA, GA

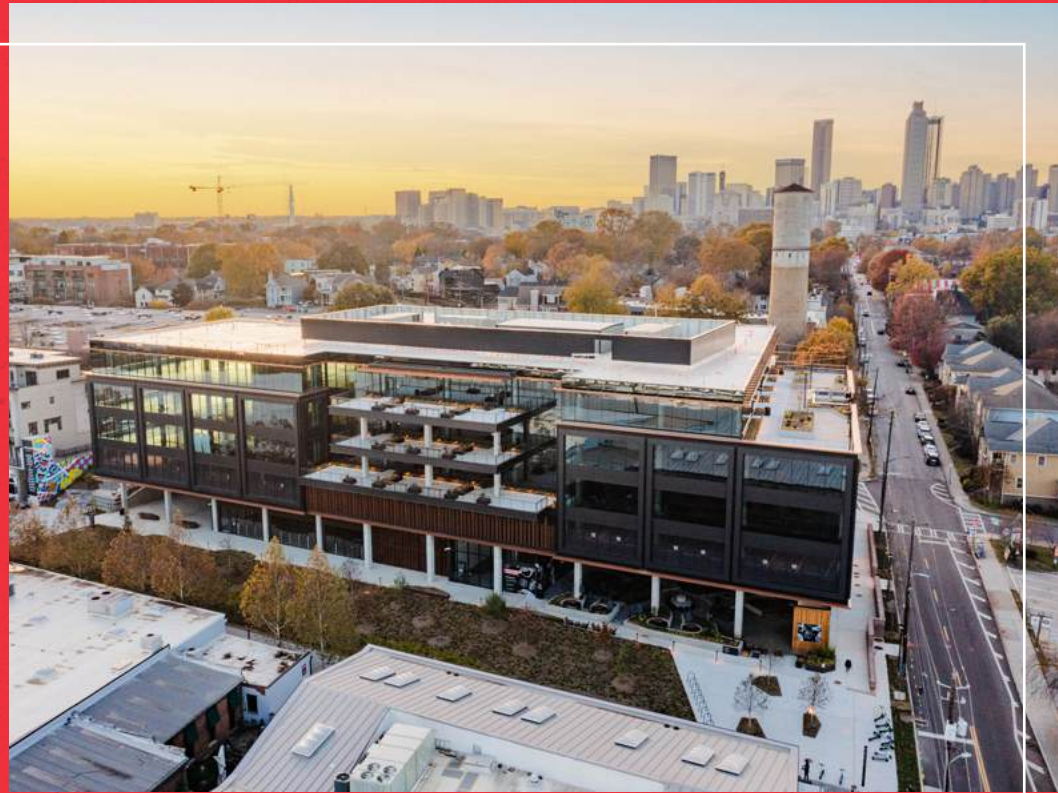



PORTMAN


**CUSHMAN &
WAKEFIELD**

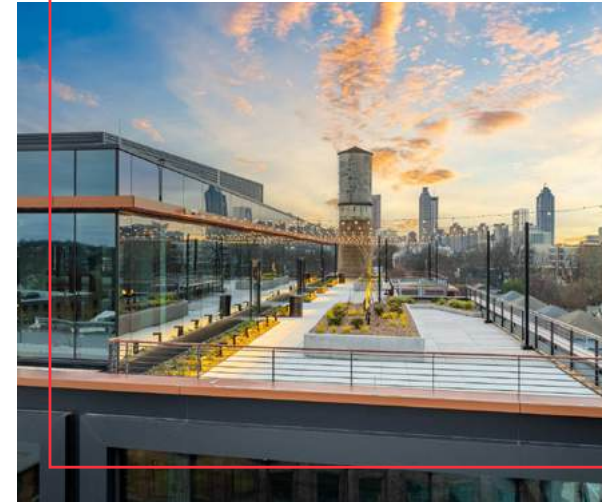
JUNCTION THE MOMENTUM

WELCOME TO JUNCTION



135,000 SF OF CLASS A OFFICE ON THE ATLANTA BELTLINE

Junction is where Atlanta's energy meets inspired design. Nestled between Inman Park, Old Fourth Ward, and the BeltLine, Junction Krog District is a walkable, bike-friendly hub of creativity and connection. With modern office spaces, vibrant retail, and inviting outdoor areas, it's more than a destination—it's a lifestyle. Discover award-winning dining, local art, and a community built for forward-thinking professionals.

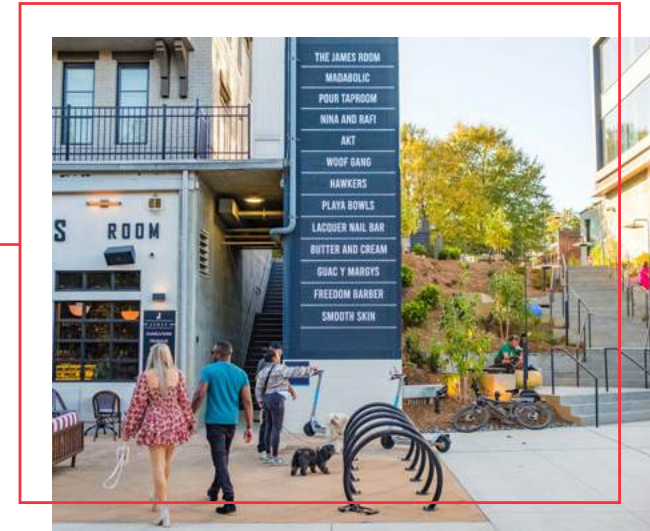


JUNCTION KROG DISTRICT

- **135,000 RSF Class A office space** on the Atlanta BeltLine
- Activated porch and patios with unmatched views

PRIME BELTLINE LOCATION

- **Highest Foot Traffic Intersection on the BeltLine** — Our intersection (at Irwin and Auburn) sees 2.3M people per year
- **Seamless Access** — Direct trail access and walkable entertainment



KROG DISTRICT

- **Award-Winning Destination** — Steps from Krog Street Market, named 2025 Best Food Hall in America by Newsweek
- **Pedestrian First Design** — Curated mix of chef-driven dining, boutique retail, and vibrant gathering spaces that attract both locals and visitors

THE DETAILS BUILDING SPECS



3 FLOORS OF OFFICE

Floor 4 (Available) — 45,000 SF
Floor 5 (Available) — 45,000 SF
Floor 6 (Leased) — 45,000 SF

5 LARGE PATIOS

Ranging from 1,500 SF to 3,900 SF of patio space for each available floor

3 ON-SITE EATERIES

Brash Coffee Roasters
Yeppa & Co. Italian
Yuji Modern Japanese

BUSIEST BELTLINE INTERSECTION

Annual Trail Traffic at Junction intersection is over 2.3M pedestrians!

PARKING OPTIONS

200 On-Site Parking Spaces in Garage (1.5/1000)+
1,700 Neighborhood Spaces

RIGHT IN THE MIX

There are over 40 restaurants within a .25 mile radius of Junction

ALL ABOUT OUTSIDE THE PORCH

Junction is the BeltLine's new front porch, featuring 7,000 SF of lush landscaping, local artwork, fire pits, three on-site eateries, and gathering spaces. Come join in on the fun!

YEPPA
& CO

BRASH
COFFEE ROASTERS

RIVIAN

YUJI
MODERN JAPANESE



THE PATIOS

At Junction, every office floor opens up to expansive, beautifully designed patio spaces that elevate the everyday—five in total!



GETTING THERE

LOCATION & ACCESS

With immediate BeltLine frontage, proximity to I-75/85, and quick access to two MARTA stations within less than a mile, Junction connects seamlessly to Atlanta's urban core and thriving intown neighborhoods.

I-75 / I-85 0.7 mi / 3 min drive

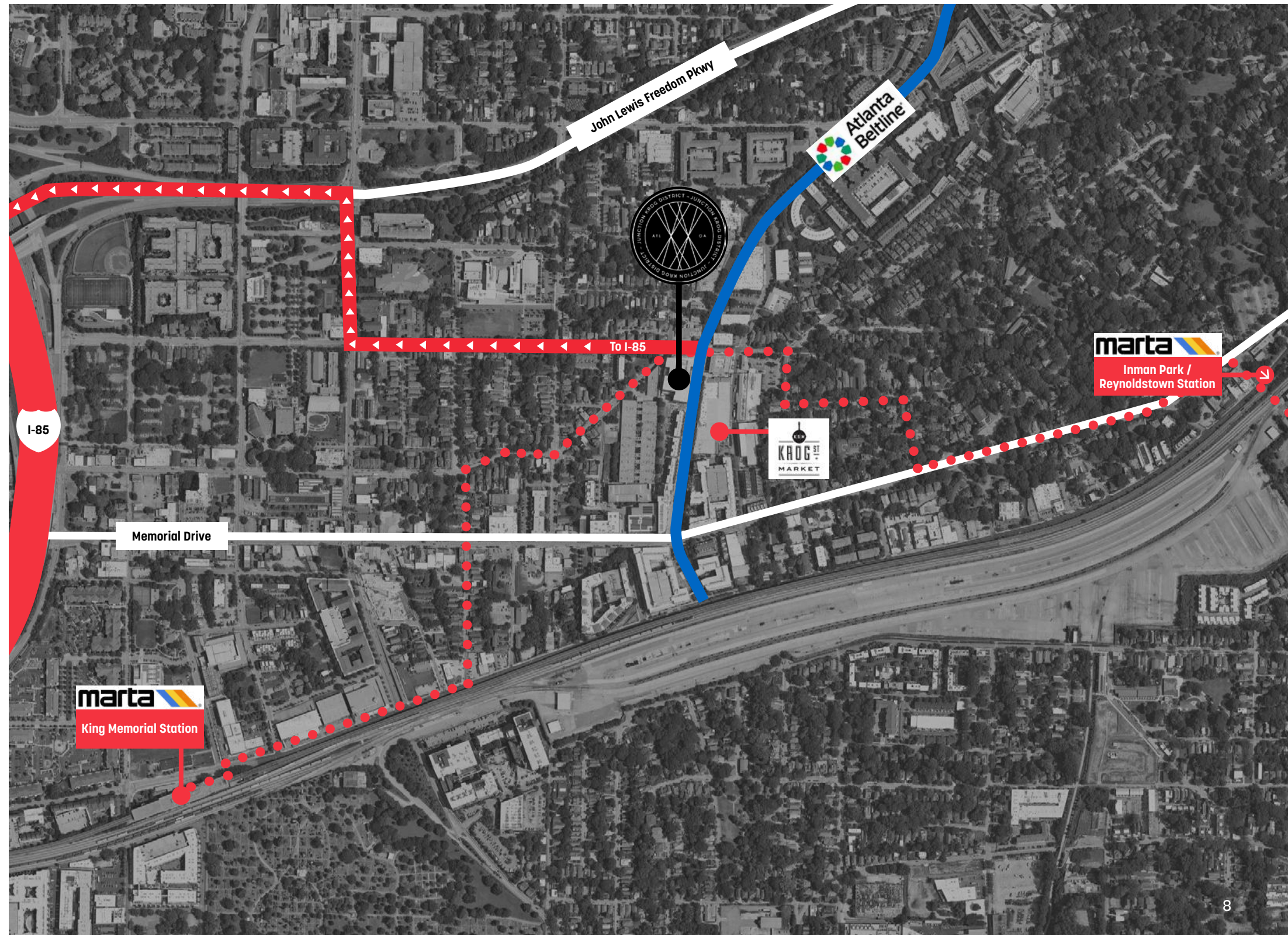
I-20 1.2 mi / 5 min drive

MIDTOWN 2.5 mi / 10 min drive

BUCKHEAD 8.0 mi / 15 min drive

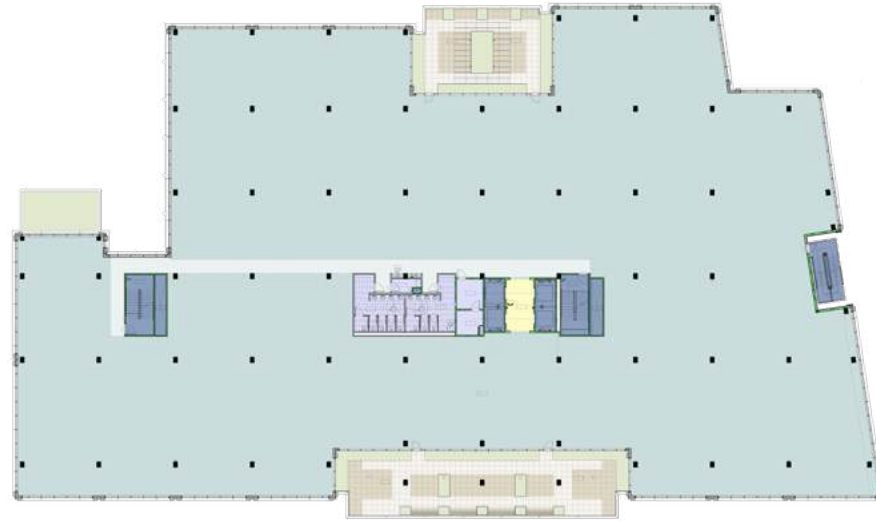
MARTA .75 mi / 15 min walk

HARTSFIELD-JACKSON
ATLANTA INTL AIRPORT 11.0 mi / 20 min drive

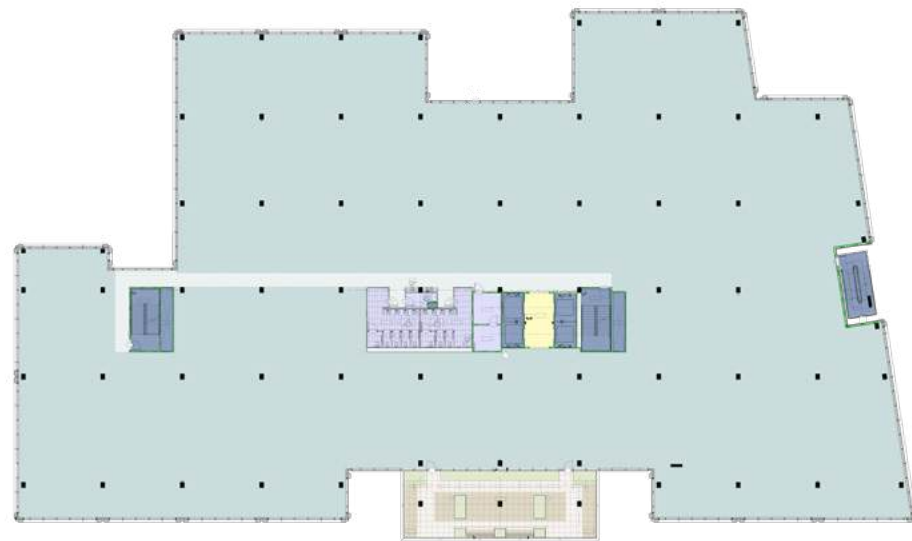


AVAILABILITIES THE SPACES

45,000 SF
OFFICE
+
3,900 SF
PATIOS



4TH FLOOR



5TH FLOOR

45,000 SF
OFFICE
+
1,500 SF
PATIO



TAKE A VIRTUAL TOUR

[VIEW 3D INTERIOR](#) →

[VIEW 3D EXTERIOR](#) →

PICTURE YOURSELF HERE

PHOTO GALLERY



ALL ABOUT THE ATL BELTLINE

#1

LARGEST ART INSTALLATION
IN THE SOUTH

22

MILE LOOP OF MULTI-USE
TRAILS, MODERN STREETCAR,
AND PARKS

45

NEIGHBORHOODS CONNECTED
BY THE BELTLINE

2.3M

ANNUAL USERS AT JUNCTION'S
INTERSECTION! IT'S THE BUSIEST
ON THE BELTLINE.

1300

ACRES OF GREENSPACE

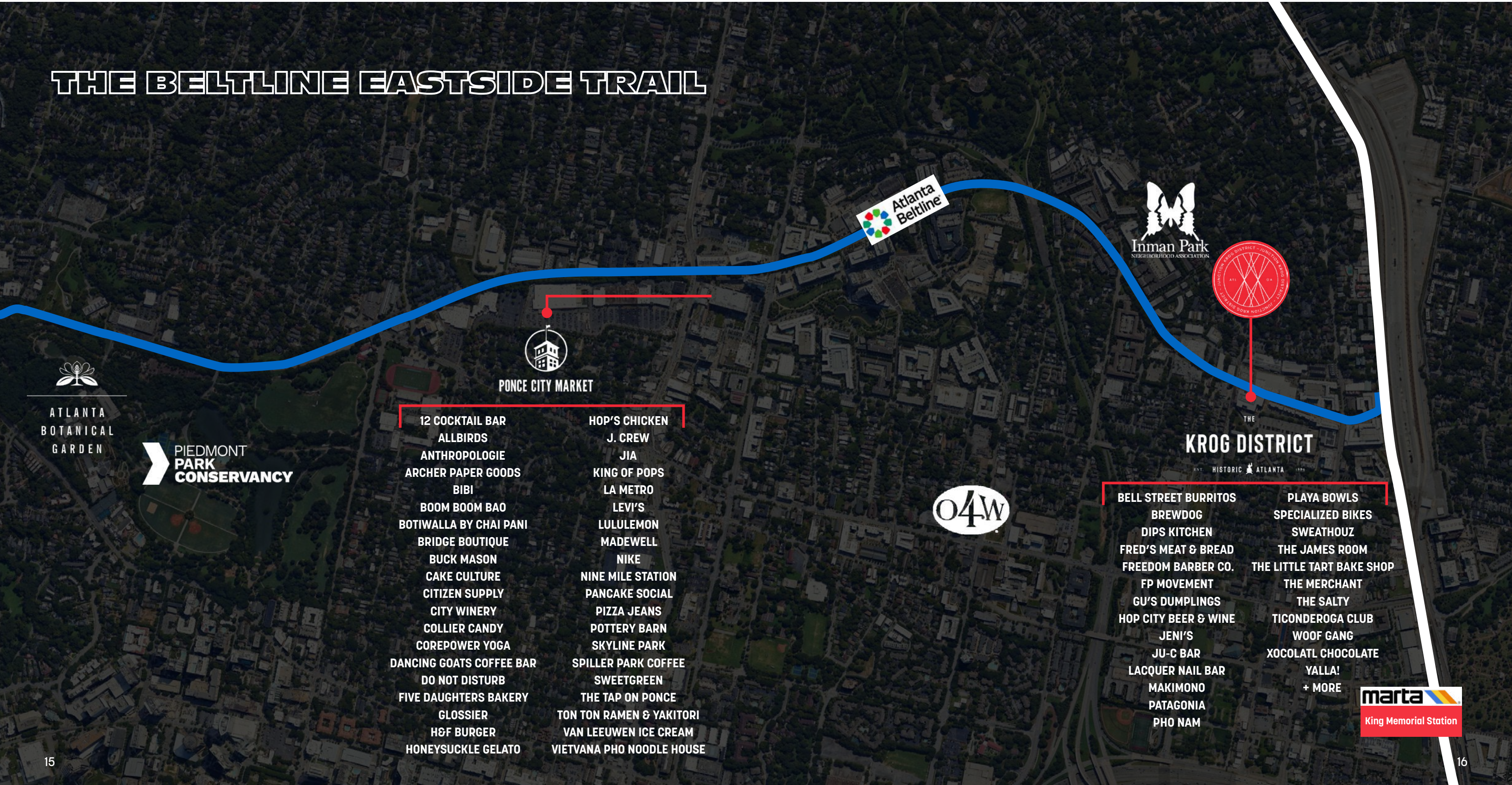
11

MILES OF CONNECTOR
TRAILS



WALK, BIKE, OR DRIVE TO NEARBY RETAIL

THE BELTLINE EASTSIDE TRAIL



ATLANTA
BOTANICAL
GARDEN

PIEDMONT
PARK
CONSERVANCY



PONCE CITY MARKET

- | | |
|--------------------------|---------------------------|
| 12 COCKTAIL BAR | HOP'S CHICKEN |
| ALLBIRDS | J. CREW |
| ANTHROPOLOGIE | JIA |
| ARCHER PAPER GOODS | KING OF POPS |
| BIBI | LA METRO |
| BOOM BOOM BAO | LEVI'S |
| BOTIWALLA BY CHAI PANI | LULULEMON |
| BRIDGE BOUTIQUE | MADEWELL |
| BUCK MASON | NIKE |
| CAKE CULTURE | NINE MILE STATION |
| CITIZEN SUPPLY | PANCAKE SOCIAL |
| CITY WINERY | PIZZA JEANS |
| COLLIER CANDY | POTTERY BARN |
| COREPOWER YOGA | SKYLINE PARK |
| DANCING GOATS COFFEE BAR | SPILLER PARK COFFEE |
| DO NOT DISTURB | SWEETGREEN |
| FIVE DAUGHTERS BAKERY | THE TAP ON PONCE |
| GLOSSIER | TON TON RAMEN & YAKITORI |
| H&F BURGER | VAN LEEUWEN ICE CREAM |
| HONEYSUCKLE GELATO | VIETVANA PHO NOODLE HOUSE |



KROGER DISTRICT

EST. HISTORIC ATLANTA 1881

- | | |
|----------------------|---------------------------|
| BELL STREET BURRITOS | PLAYA BOWLS |
| BREWDOG | SPECIALIZED BIKES |
| DIPS KITCHEN | SWEATHOUZ |
| FRED'S MEAT & BREAD | THE JAMES ROOM |
| FREEDOM BARBER CO. | THE LITTLE TART BAKE SHOP |
| FP MOVEMENT | THE MERCHANT |
| GU'S DUMPLINGS | THE SALTY |
| HOP CITY BEER & WINE | TICONDEROGA CLUB |
| JENI'S | WOOF GANG |
| JU-C BAR | XOCOLATL CHOCOLATE |
| LACQUER NAIL BAR | YALLA! |
| MAKIMONO | + MORE |
| PATAGONIA | |
| PHO NAM | |



JOIN THE MOMENTUM



JUNCTION KROG DISTRICT

667 AUBURN AVE NE
ATLANTA, GA



John Neal Scott
john.neal.scott@cushwake.com
404.218.1691

