

ELDON HOUSE

1 ELDON WAY, CRICK, NORTHAMPTON, NN6 7SL



FREEHOLD OFFICE FOR SALE

7,716 SQ FT
(716.83 sq m)

ELDON HOUSE



- 7,716 sq ft (716.83 sq m)
- 40 Car Parking Spaces
- Good Specification including Air Conditioning, Double Glazing and LED Lighting
- Mixture of Open Plan and Executive Offices
- Immediately Available





LOCATION/SITUATION

Eldon House occupies a high profile position on Crick Industrial Estate which is located adjacent to Junction 18 of the M1, close to the M1/M6/A14 interchange. Daventry International Rail Freight Terminal (DIRFT) is close by with occupiers including Sainsbury, Tesco, Boohoo, Clipper, Dunelm and DHL.

Mainline rail services are available from Rugby with the fastest train to London taking 49 minutes and Birmingham only 28 minutes. Coventry and Birmingham International Airport are easily accessible.



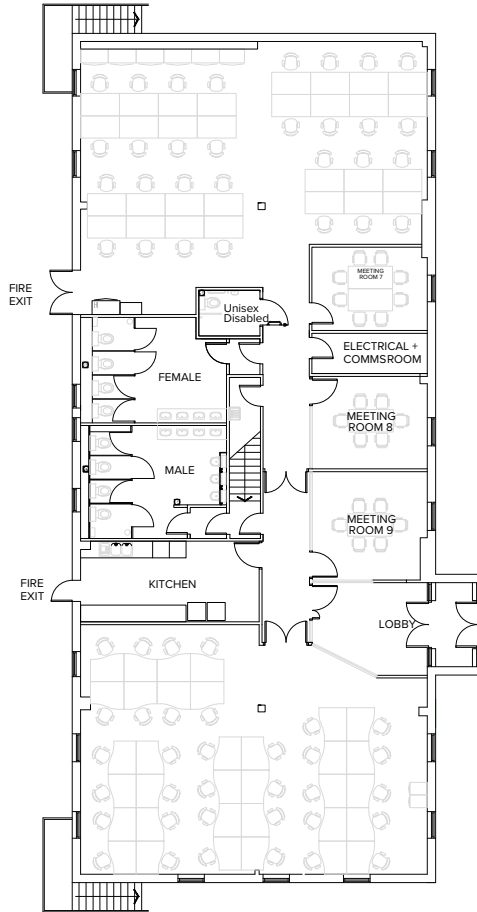
DESCRIPTION

A modern two-storey office building benefiting from pre-finished profile sheet external elevations with powder coated aluminium casements under a pre-finished pitched roof. The building benefits from air conditioning, suspended ceilings with inset LED lighting (PIR), double glazing and offers a number of executive offices together with open plan space.

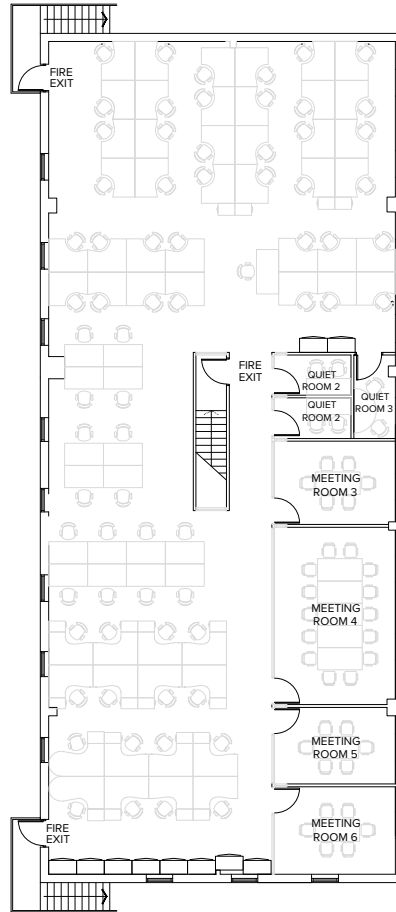


Boundary is approximate

ACCOMMODATION



GROUND FLOOR



FIRST FLOOR



The building has been measured in accordance with the RICS Code of Measuring Practice [6th Edition]:

Ground Floor NIA	3,588 sq ft	333.31 sq m
First Floor NIA	4,128 sq ft	383.52 sq m
Total Area NIA	7,716 sq ft	716.83 sq m

There are 40 on-site car spaces.





TENURE

Freehold available – terms on application.

EPC RATING

The property has an energy performance rating of B. The EPC expires 21st April 2031.

SERVICES

We understand all mains services are connected to the property except gas, however these have not been tested.

RATES

Awaiting assessment.

LEGAL COSTS

Each party to be responsible for their own legal costs.

FURTHER INFORMATION

For further information or to arrange a viewing please contact the sole agent:



BEN COLEMAN BSc FRICS

ben@bencolemanassociates.co.uk

07843 582303

.....
DISCLAIMER: The Agents for themselves and for the vendors or lessors of the property whose agents they are give notice that, (i) these particulars are given without responsibility of The Agents or the Vendors or Lessors as a general outline only, for the guidance of prospective purchasers or tenants, and do not constitute the whole or any part of an offer or contract; (ii) The Agents cannot guarantee the accuracy of any description, dimension, references to condition, necessary permissions for use and occupation and other details contained herein and any prospective purchasers or tenants should not rely on them as statements or representations of fact but must satisfy themselves by inspection or otherwise as to the accuracy of each of them; (iii) no employee of The Agents has any authority to make or give any representation or enter into any contract whatsoever in relation to the property; (iv) VAT may be payable on the purchase price and / or rent, all figures are exclusive of VAT, intending purchasers or lessees must satisfy themselves as to the applicable VAT position, if necessary by taking appropriate professional advice; (v) The Agents will not be liable, in negligence or otherwise, for any loss arising from the use of these particulars. 12/23