



FOR LEASE

# JETPORT COMMERCE PARK

Benjamin Rd & Jetport Industrial Blvd. Tampa, FL 33634



PLEASE CONTACT FOR ADDITIONAL INFORMATION:

Melissa Watterworth  
Senior Associate  
+1 813 599 2190

[Melissa.watterworth@cushwake.com](mailto:Melissa.watterworth@cushwake.com)

SAM KOROLOS  
Director  
+1 704 989 1327

[sam.korolos@cushwake.com](mailto:sam.korolos@cushwake.com)

TREY CARSWELL, SIOR  
Executive Director  
+1 813 230 6131

[trey.carswell@cushwake.com](mailto:trey.carswell@cushwake.com)

# JETPORT COMMERCE PARK

Benjamin Rd. & Jetport Industrial Blvd. Tampa, FL 33634



## PROPERTY HIGHLIGHTS

- 18' Minimum Clear Height
- Dock High and Grade Level Loading
- Tilt-Wall Construction
- ½ Mile to the Veterans Expressway

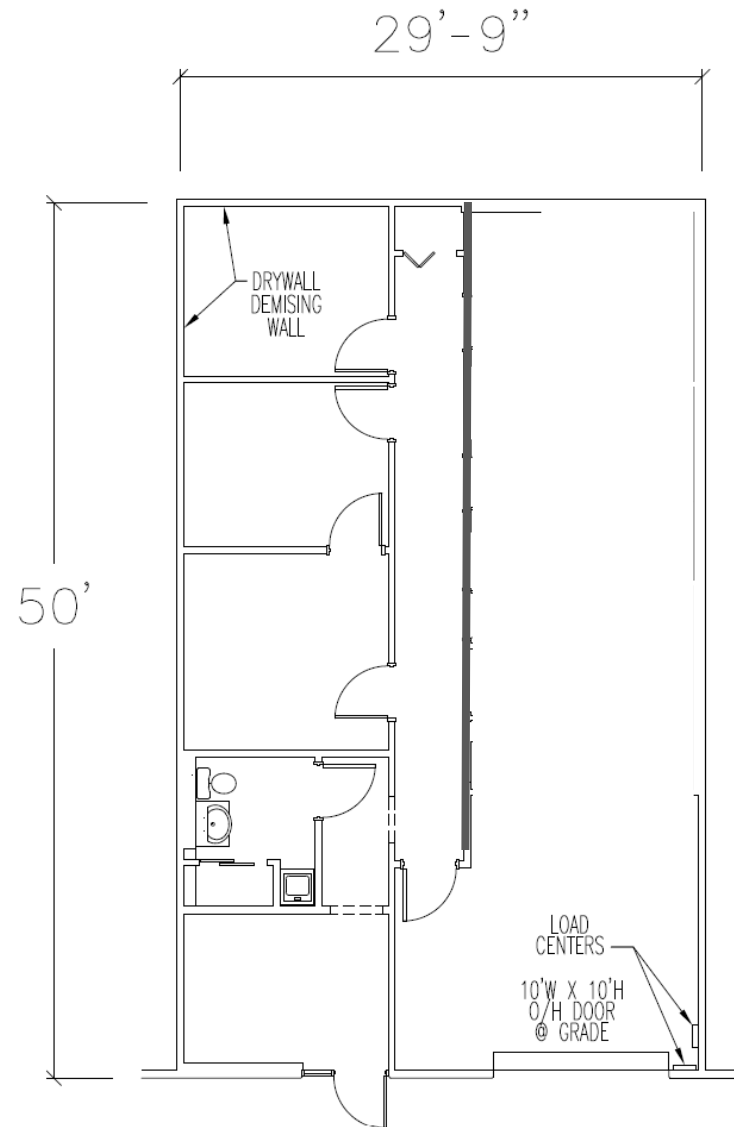
Veterans Expressway  
Visibility and Frontage  
on Benjamin Road

# BUILDING 515

## Suite 5914

### SPACE HIGHLIGHTS

- Available SF: 1,500 SF
- Office SF: ~ 750 SF
- Loading: 1 Grade Level Door
- Available Now

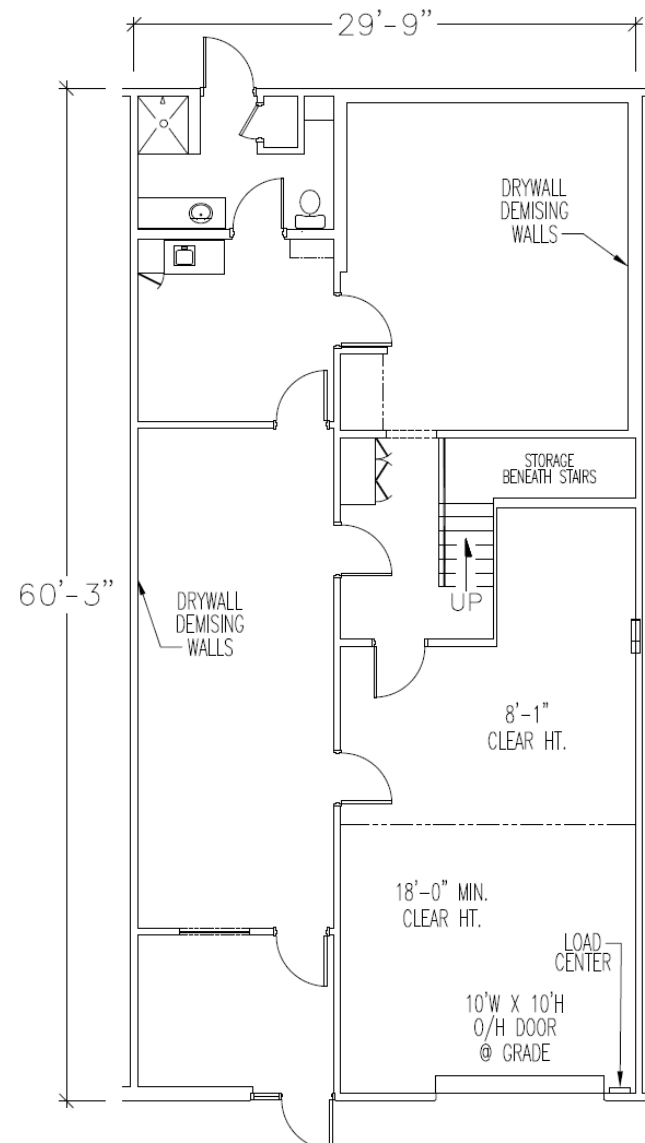


# BUILDING 515

## Suite 5898

### SPACE HIGHLIGHTS

- Available SF: 1,897 SF
- Office SF: 1,204 SF
- Loading: 1 Drive In Door
- Clear Height: 18'
- Available Now

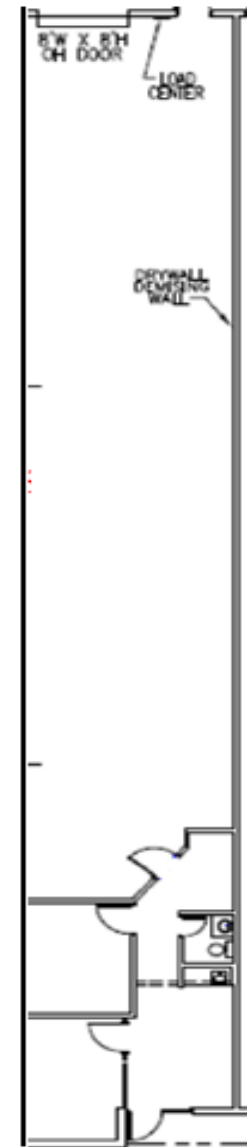


# BUILDING 513

## Suite 6009

### SPACE HIGHLIGHTS

- Available SF: 2,400 SF
- Office SF: ~400 SF
- Loading: 1 Dock High Door
- Clear Height: 18'
- Available Now

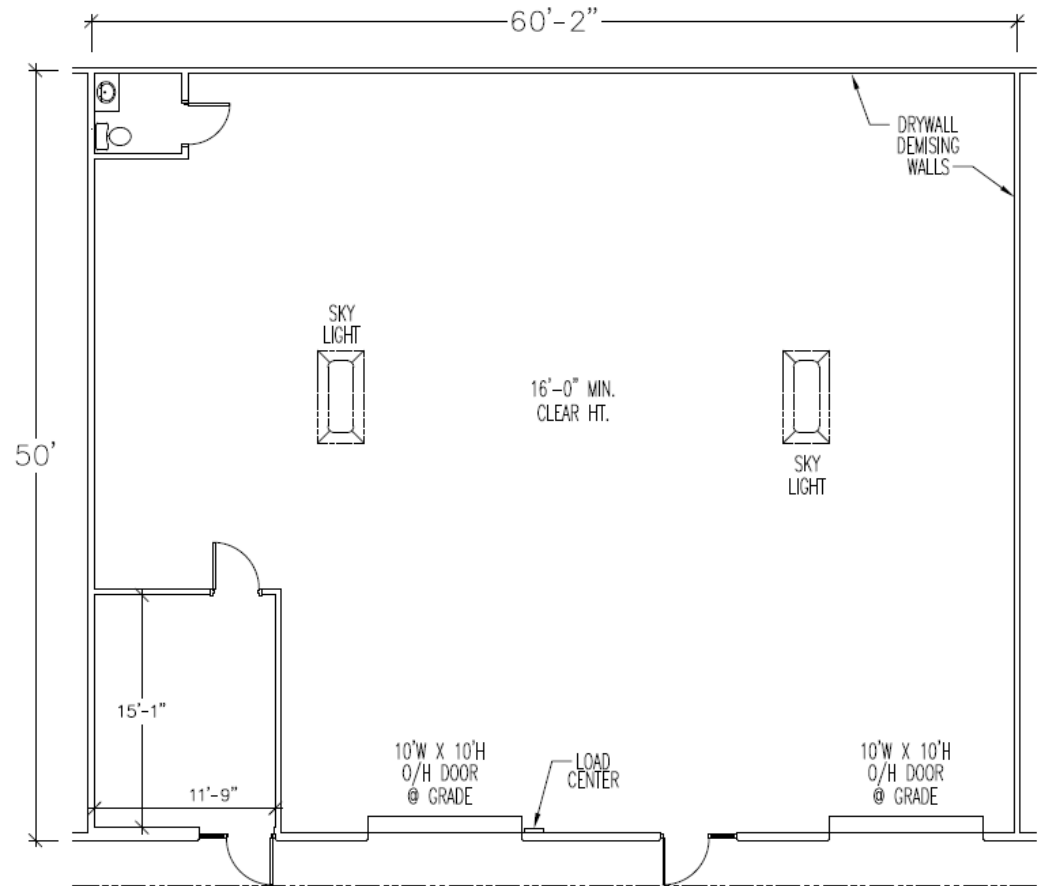


# BUILDING 515

## Suite 5922

### SPACE HIGHLIGHTS

- Available SF: 3,189 SF
- Office SF: 191 SF
- Loading: 2 Grade Level Doors
- Clear Height: 16'
- Available Now



# BUILDING 515

## Suite 5892

### SPACE HIGHLIGHTS

- Available SF: 3,997 SF
- Office SF: 324 SF
- Loading: 2 Grade Level Doors
- Clear Height: 16'
- Available Now

