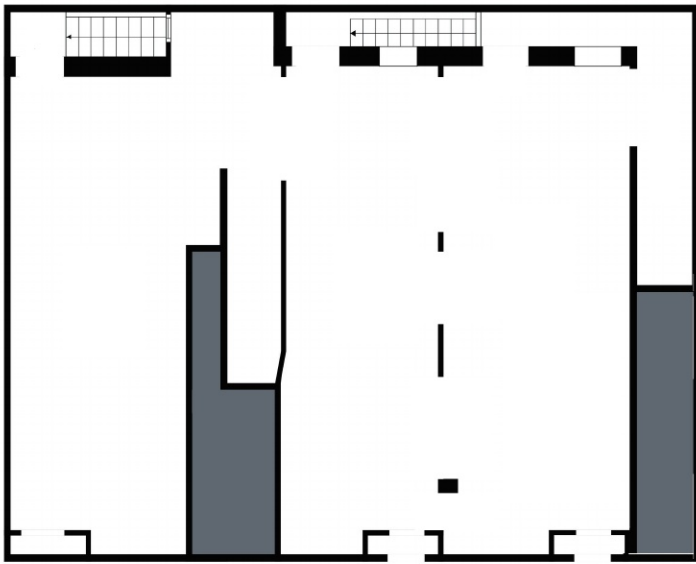


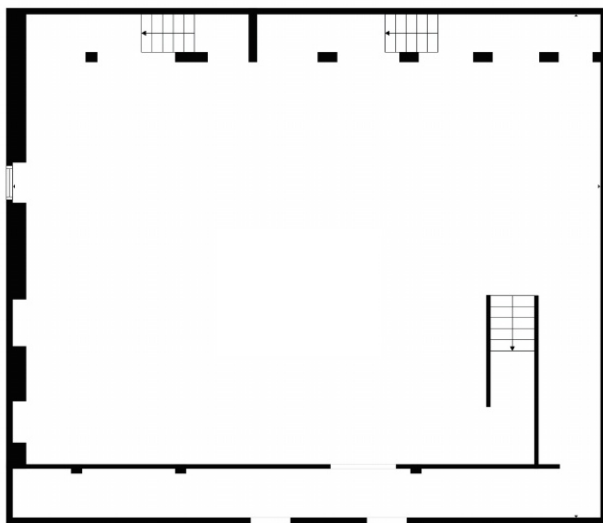
4-6 Bleecker St

NoHo Manhattan





Ground Level



Lower Level

Space Available 600 SF -3,600 SF

Bleecker St Frontage 50 FT

Ceiling Height 12'

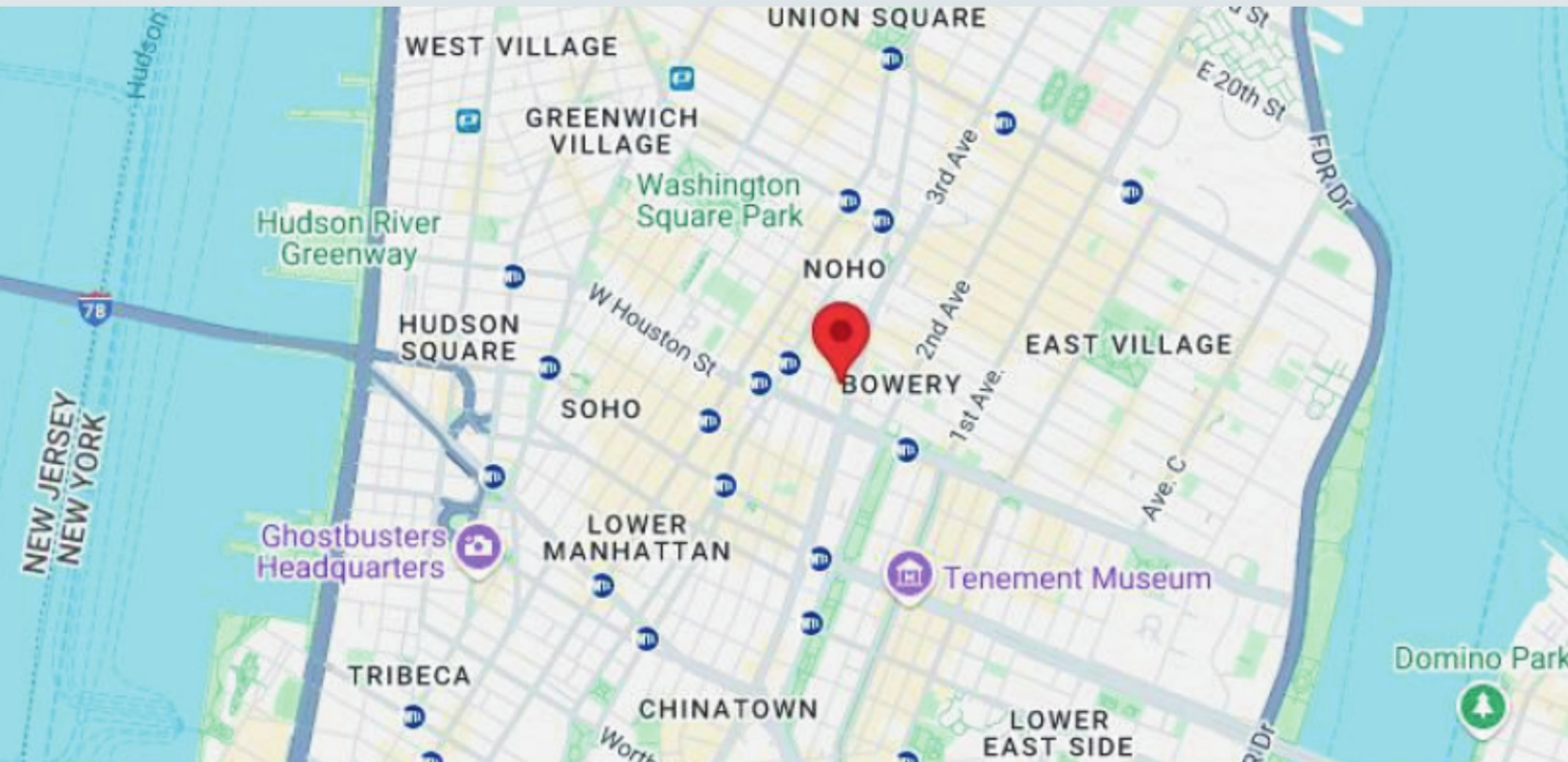
Neighborhood NoHo

Cross-Streets Bowery and Elizabeth St

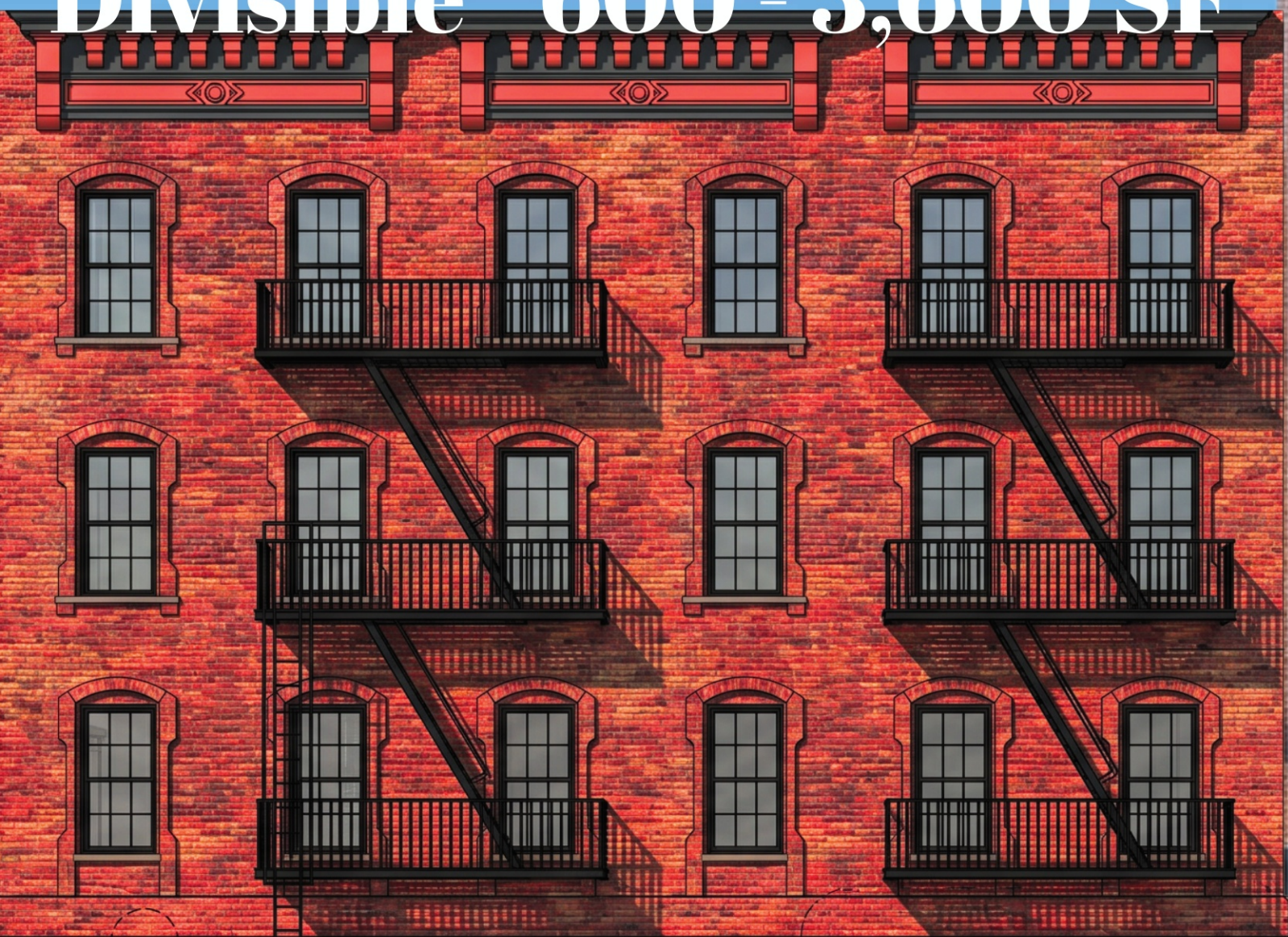
Previously Tenant Bar / Restaurant

## 4-6 Bleecker Street

A rare opportunity to lease one of NoHo's most storied retail spaces, prominently situated on Bleecker Street between Bowery and Lafayette Street. Following a major landlord renovation, the space is delivered as a pristine vanilla box with a newly designed storefront and direct access to a lower level – ready for a tenant's vision. With a rich history that includes flagship retail from J.Crew, the celebrated speakeasy Ghost Donkey, the acclaimed Saxon + Parole, and Madam Geneva, this address carries an undeniable cultural cachet in one of Manhattan's most dynamic and high-profile corridors



# Divisible 600 - 3,600 SF



4 Bleecker

6A Bleecker

6B Bleecker



201-680-7115

[Leasing@SalmanCapital.com](mailto:Leasing@SalmanCapital.com)

[SalmanCapital.com](http://SalmanCapital.com)