

**AVAILABLE FOR LEASE**

**±9,926 SF WITH ±0.75 ACRE SECURED YARD**

# ARROWHEAD FLEX CENTER

5811 W TALAVI BLVD, GLENDALE, AZ

**±24,951 SF CLASS-A FLEX/INDUSTRIAL WITH LARGE SECURED YARD**

**±0.75 Acre  
Secured Yard  
(Installation in Progress)**

## FOR MORE INFORMATION

**KERI SCOTT, SIOR**  
Sr. Managing Director  
t 602-386-7153  
keri.scott@nmrk.com

**ALEX KAS-MAROGI**  
Sr. Associate  
t 248-881-6376  
alex.kas-marogi@nmrk.com

**NICO BURGARELLO**  
Associate  
t 602-952-3857  
nico.burgarello@nmrk.com

**NEWMARK**



# PROPERTY HIGHLIGHTS



## PROPERTY HIGHLIGHTS

---



Flex/Industrial (40% Office/60% Warehouse)

---



Large ( $\pm 0.75$  Acre) Secured Outdoor Yard Area

---



2 (12'x14') oversized grade level doors

---



1,200 amps of heavy 3p power

---



100% HVAC warehouse

---



PAD Zoning (Business Park - City of Glendale)

---



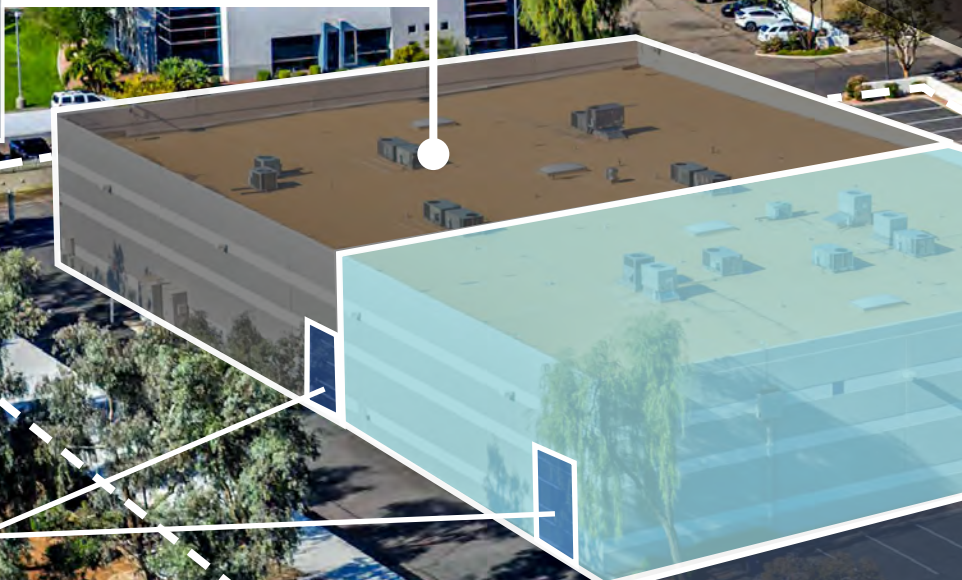
$\pm 18'$  warehouse clear height

SITE AERIAL

*N 59th AVE*

**Suite 1**  
**±14,945 SF**  
(Leased)

**2 Oversized (12'x14')**  
**grade level doors**



W TALAVI BLVD

**Suite 2**  
**±9,926 SF**  
[Immediately Available]

**±0.75 Acre**  
**Secured Yard**  
Installation in Progress

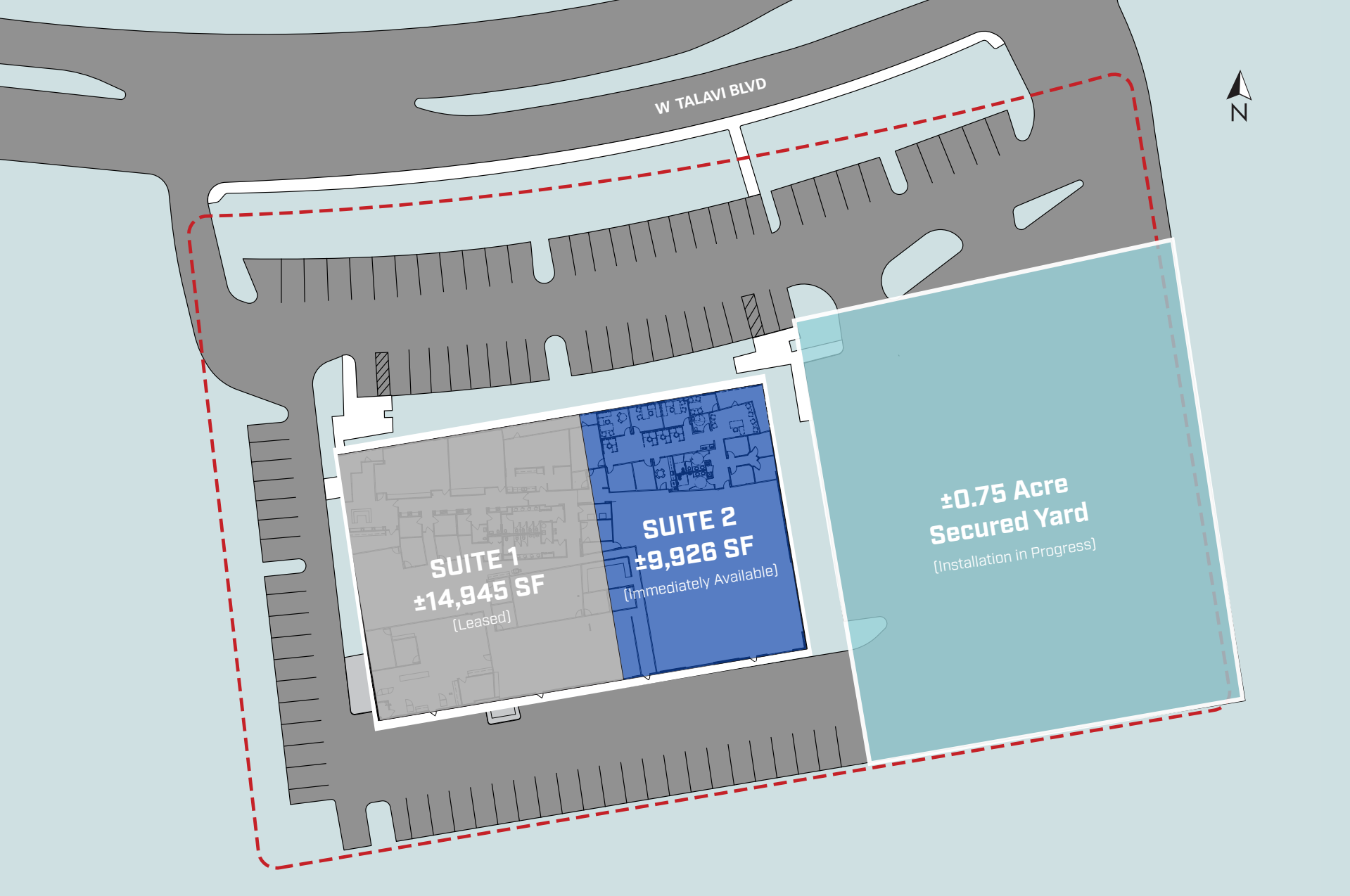
# HIGHWAY MAP



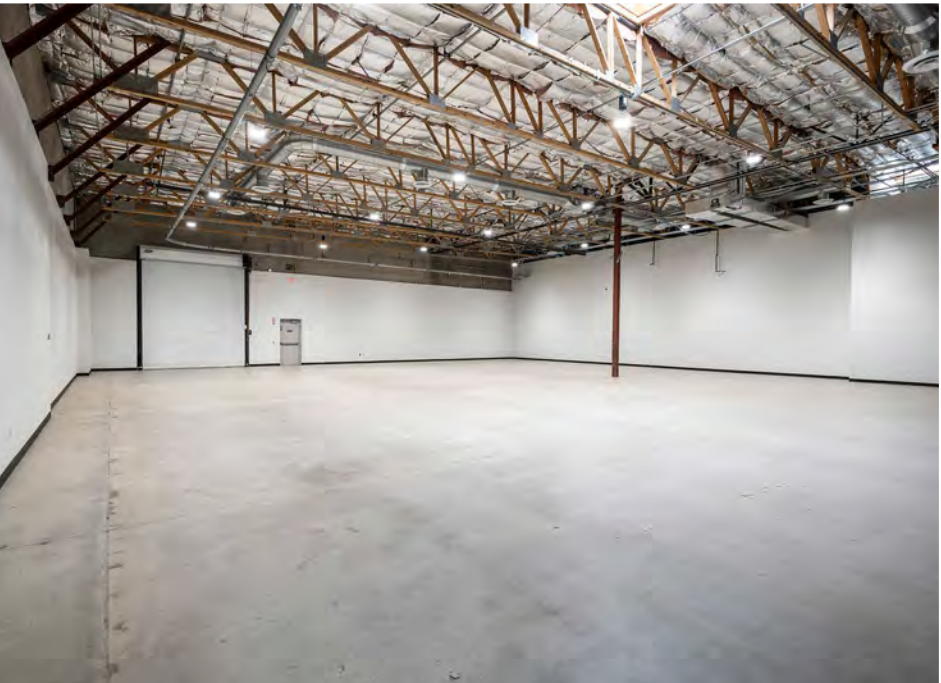
# AERIAL VIEW MAP



# SITE PLAN



# PROPERTY PHOTOS

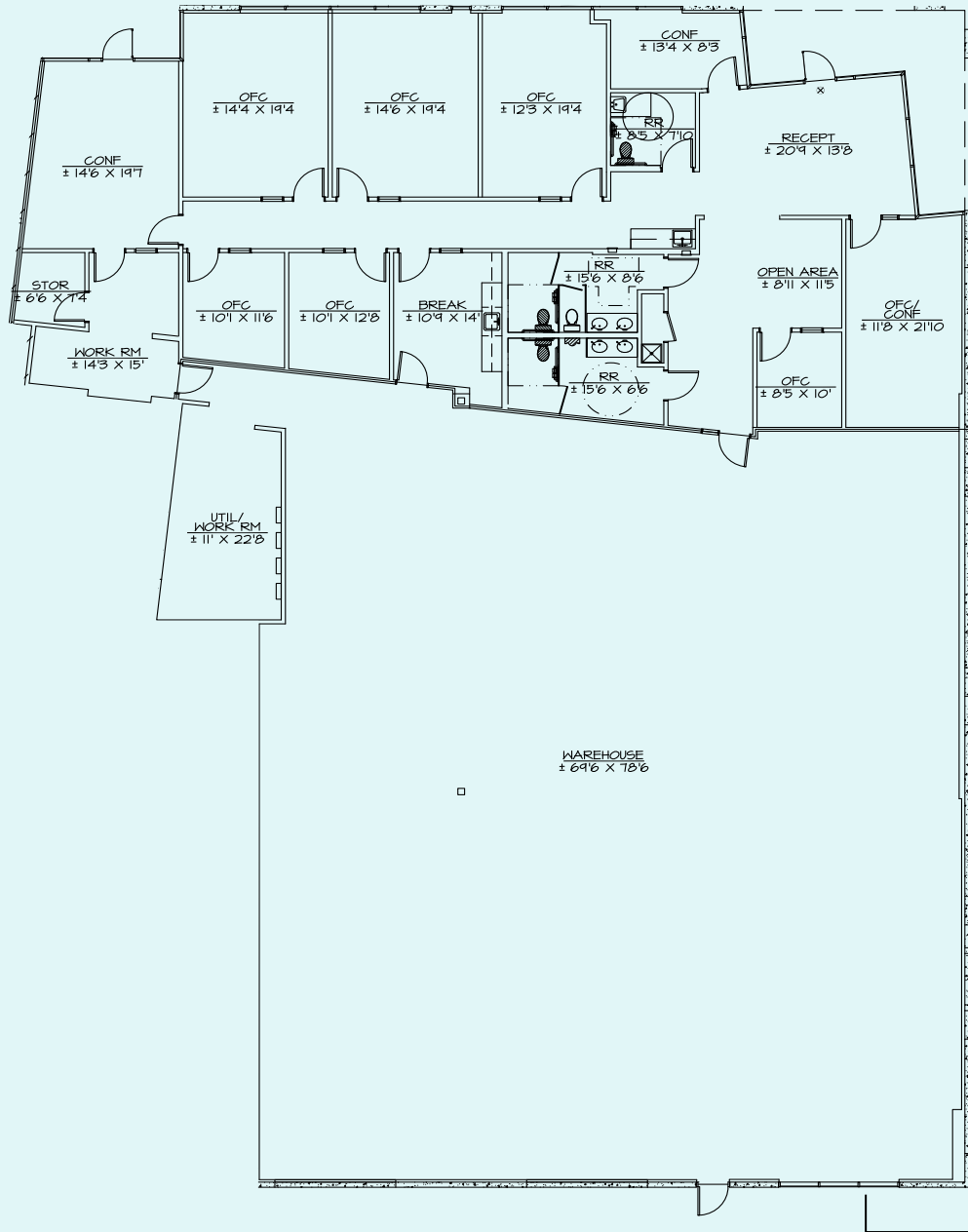
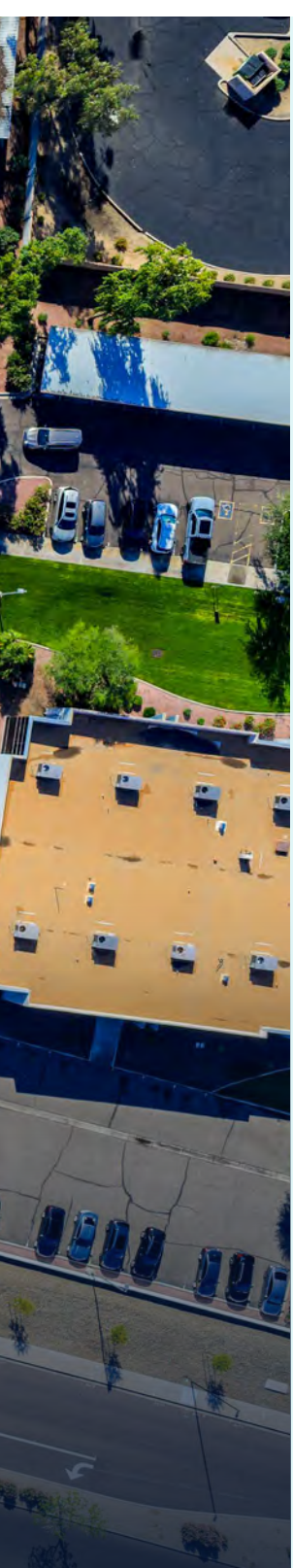


**±0.75 Acre  
Secured Yard**  
(Installation in Progress)

**SUITE 2**  
**±9,926 SF**  
(Immediately Available)

**SUITE 1**  
**±14,945 SF**  
(Leased)

# FLOOR PLAN



[Click Here!  
For Virtual Tour](#)

**Oversized (12'x14')  
grade level door**

### Suite 2 (9,926 SF)

40% Office (±3,922 SF) | 60% Warehouse (±6,004 SF) | 600 Amps (heavy 3p) | ±18' Clear Height

# ARROWHEAD FLEX CENTER

5811 W TALAVI BLVD, GLENDALE, AZ

FOR MORE INFORMATION, PLEASE CONTACT

**KERI SCOTT, SIOR**

Sr. Managing Director

t 602-386-7153

[keri.scott@nmrk.com](mailto:keri.scott@nmrk.com)

**ALEX KAS-MAROGI**

Sr. Associate

t 248-881-6376

[alex.kas-marogi@nmrk.com](mailto:alex.kas-marogi@nmrk.com)

**NICO BURGARELLO**

Associate

t 602-952-3857

[nico.burgarello@nmrk.com](mailto:nico.burgarello@nmrk.com)

**NEWMARK**

The information contained herein has been obtained from sources deemed reliable but has not been verified and no guarantee, warranty or representation, either express or implied, is made with respect to such information. Terms of sale or lease and availability are subject to change or withdrawal without notice.