



# Howard O'Hare Business Center – Suite #218

200 E. Howard Avenue  
DES PLAINES, IL

---

## Available

5,003 SF

## Office Area

900 SF

## Dock Doors

One Exterior

## Lease Rate

Subject to Offer

---

## Flex / Industrial for Lease

### Property Highlights

- Multi-tenant, single story complex
- Corner unit
- Great window full lines
- Abundant surface parking
- Rosemont Entertainment District – 13 mins.
- O'Hare terminal - 8 mins.
- South Cargo Entrance -14 mins.
- Downtown Chicago – 24 mins.

---

*For information, please contact:*

### Tom Gath

Managing Director

t 773-957-1415

thomas.gath@nmrk.com

8750 W. Bryn Mawr, Suite 350  
Chicago, IL 60631

[nmrk.com](http://nmrk.com)

**NEWMARK**

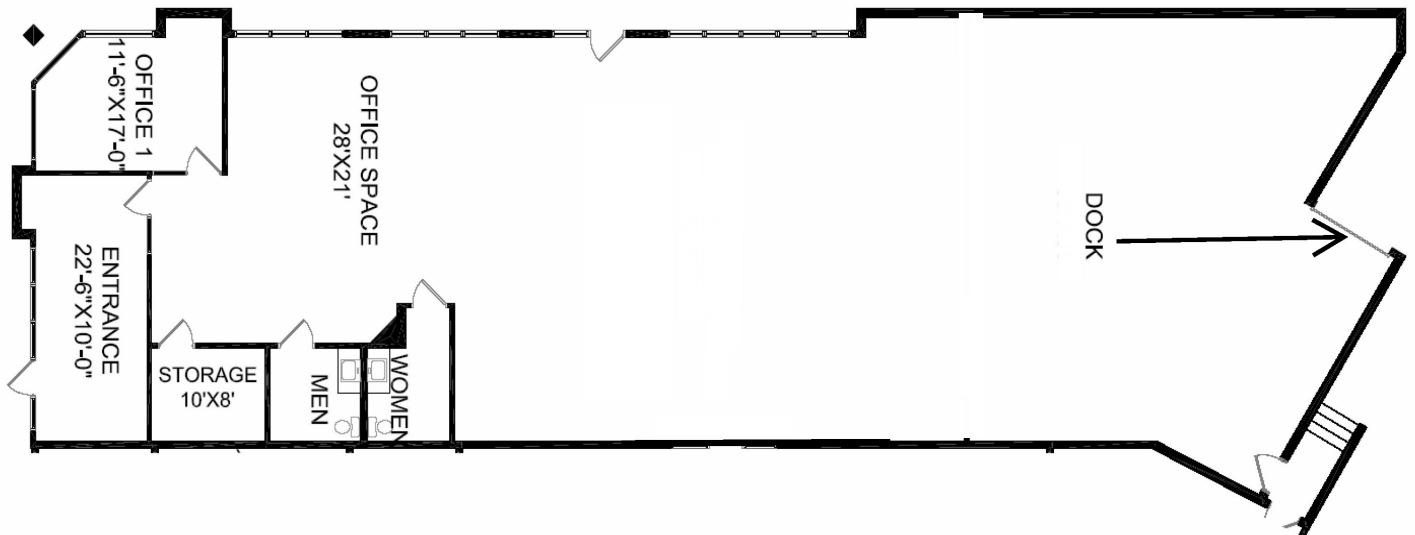
The information contained herein has been obtained from sources deemed reliable but has not been verified and no guarantee, warranty or representation, either express or implied, is made with respect to such information. Terms of sale or lease and availability are subject to change or withdrawal without notice.

# HOWARD O'HARE BUSINESS CENTER – DES PLAINES, IL

Aerial



Floor Plan



# HOWARD O'HARE BUSINESS CENTER – DES PLAINES, IL

Map

