

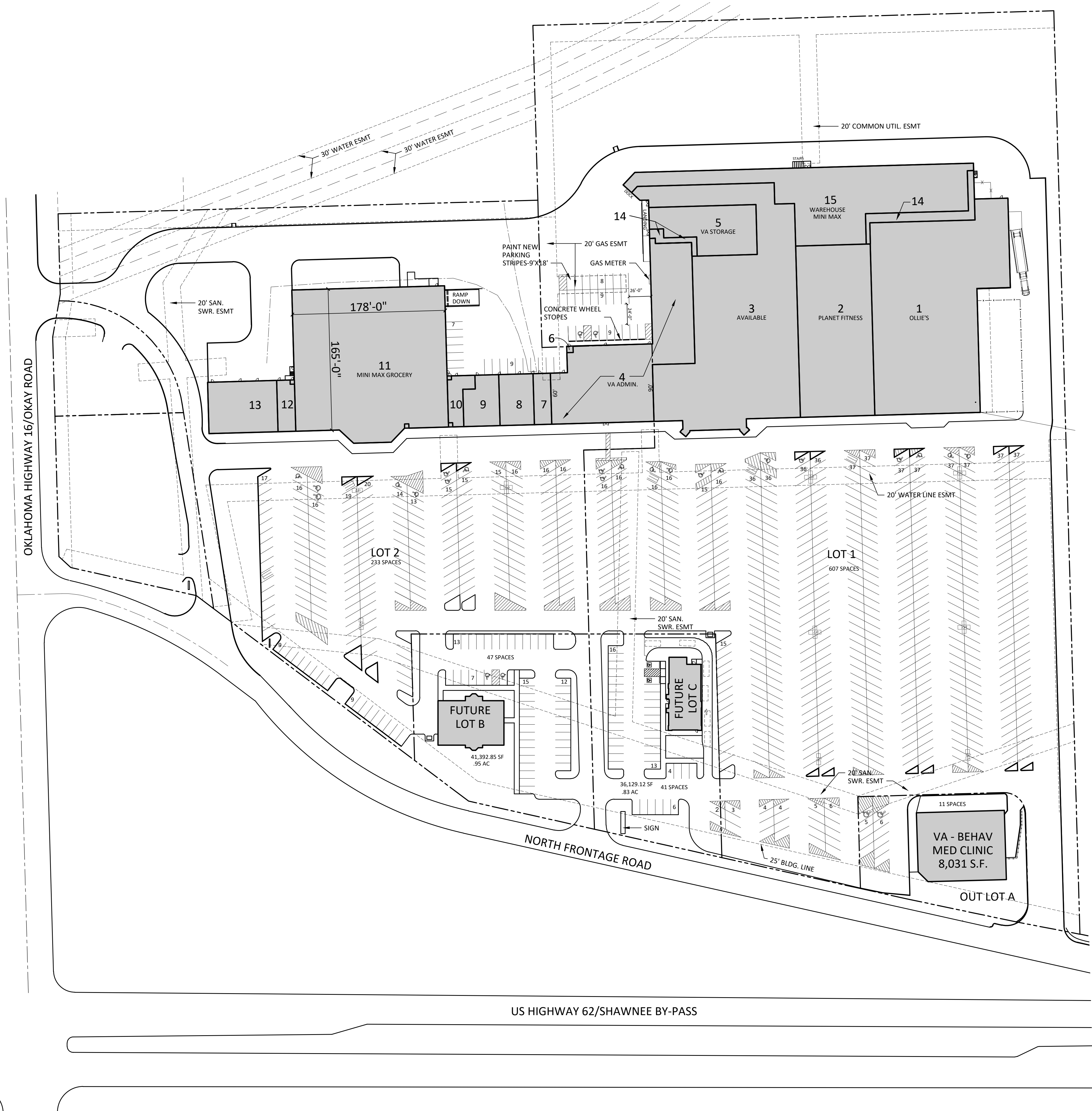
TENANT DIRECTORY

1. Ollie's	30,620 SF
2. Planet Fitness	17,600 SF
3. Available	34,017 SF
4. VA Admin.	16,875 SF
5. VA Storage	5,671 SF
6. Control Area	199 SF
7. Herbal Life	1,200 SF
8. Fashion Nail	2,400 SF
9. Schulz Chiropractic	2,303 SF
10. Subway	1,261 SF
11. Mini Max Grocery	30,330 SF
12. Little Caesar	1,212 SF
13. Dental Office	4,838 SF
14. Common Area	1,596 SF
15. Warehouse Mini Max	19,878 SF

Out Lot A	
VA - Health Care	8,031 SF
Total	178,031 SF

PARKING AND BUILDING SUMMARY

LOT 1	
592 SPACES	RETAIL
5.09/1,000 SF	116,292 SF
LOT 2	
248 SPACES	RETAIL
4.61/1,000 SF	53,720 SF
OUT LOT A	
11 SPACES	RETAIL
1.36/1,000 SF	8,031 SF
OUT LOT B	
47 SPACES	RESTAURANT
11.17/1,000 SF	4,206 SF
OUT LOT C	
41 SPACES	RESTAURANT
13.24/ 1,000 SF	3,096 SF
TOTAL PARKING	
939 SPACES	TOTAL BUILDING
5.06/1,000 SF	185,333 SF



LEASE PLAN



\\RSNAW-1\Projects\2023 PROJECTS\23002-BACONE COMMONS-LEASE PLAN-MUSKOGEE, OK\CAD\Leasing Plan.dwg Plotted on: Feb 02, 2023 - 4:13pm by Shillman



BACONE COMMONS SHOPPING CENTER
US HWY 62 AT OK HWY 16
MUSKOGEE, OKLAHOMA

Issue:	Description:	Date:
Revision:	Description:	Date:
23002	SH	
	RS	
Plan Number:	23002	
Drawn by:	SH	
Checked by:	RS	
Date:		
Contents		
LEASE PLAN		
Sheet Number		