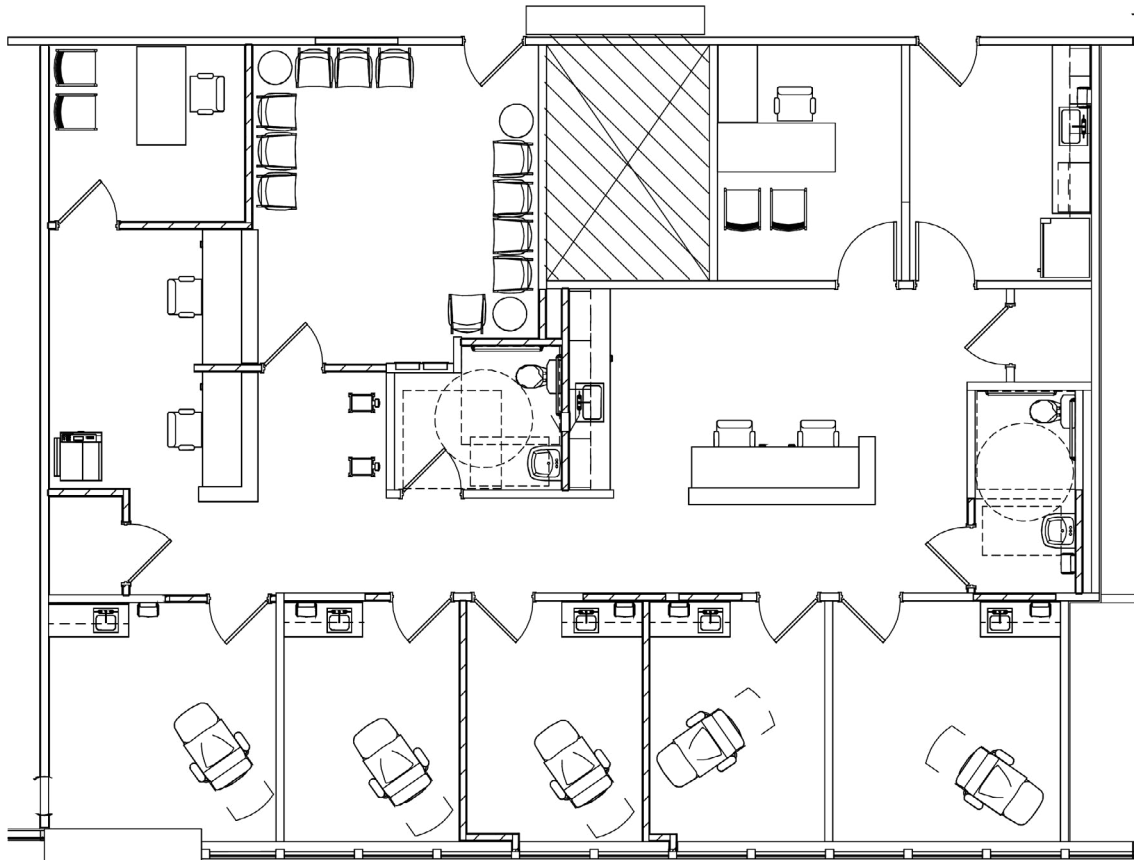


# SUITE PLAN

## AUGUSTA PROFESSIONAL OFFICE BUILDING II

818 St. Sebastian Way  
Augusta, GA 30901

**Spec Suite 305**  
2,065 USF



### For Leasing Information

Contact Regional Leasing Director  
Erreca White at (706) 373-2889  
[Erreca.White@Lillibridge.com](mailto:Erreca.White@Lillibridge.com)

