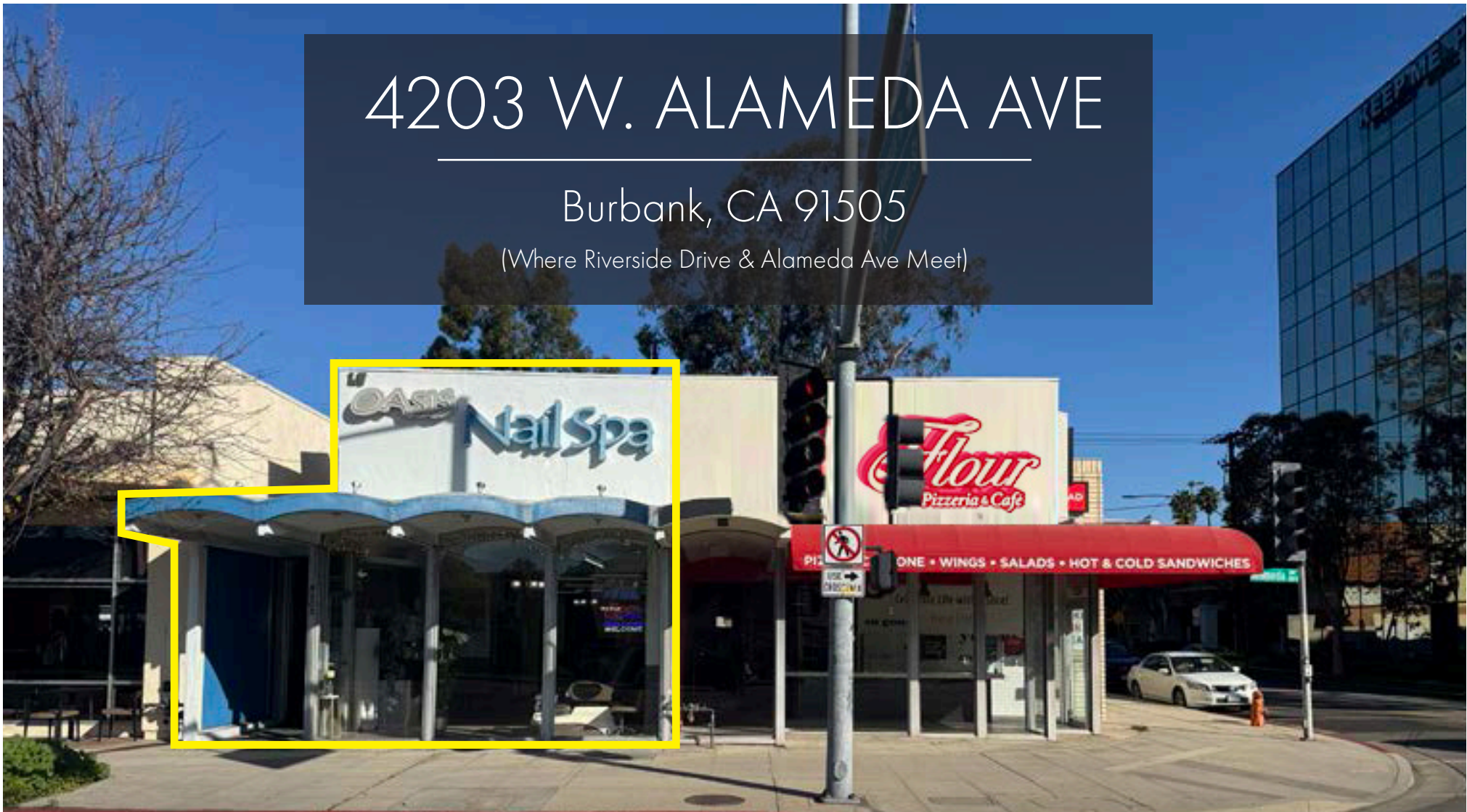


# 4203 W. ALAMEDA AVE

Burbank, CA 91505

(Where Riverside Drive & Alameda Ave Meet)



**Rare Retail Space In Toluca Lake/Burbank  
Media District For Lease**



**COMMERCIAL  
ASSET GROUP**

**DAVID ASCHKENASY**  
EXECUTIVE VICE PRESIDENT  
310.272.7381  
DAVIDA@CAGRE.COM  
LIC. 01714442

**DAVID ICKOVICS**  
PRINCIPAL  
310.272.7380  
DJI@CAGRE.COM  
LIC. 01315424

**AIDAN NUSSBAUM**  
ASSOCIATE  
310.272.7384  
AIDAN@CAGRE.COM  
LIC. 02306324

# FEATURES

- Interior: ±1,418 SQFT
- Rent: \$6.00 PSF/Mo + NNN (NNN + ±\$0.35 PSF)
- Located in between Starbucks and LA favorite Flour Pizza (Open in July)
- Perfect sized space for retail or to-go only food use
- Area Co-Tenants include Alfred Coffee, Sweetfin, Fresh Brothers, and Tacos 1986, Yakumi by Sushi Roku, Ramen Jinya, Chipotle, Subway, Hanks Bagels, Mendicino Farms, Tocaya Organica, and the Original Bob's Big Boy
- Surrounded by over 3.5 million square feet of entertainment based office including Warner Brothers Studios, the Disney Channel, Disney Studios, PBS, ABC, Burbank Studios, Atlantic Records and many others

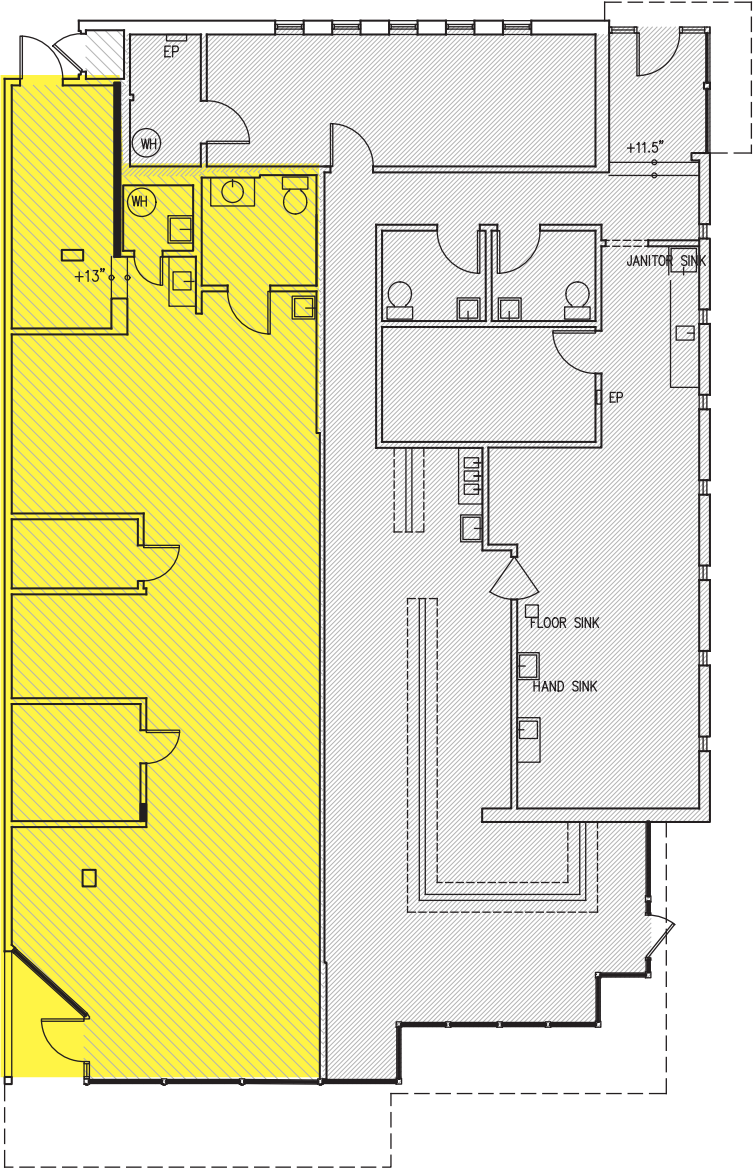


# BURBANK MEDIA DISTRICT/TOLUCA LAKE

With one of the highest concentrations of entertainment companies in the world, Burbank's famed Media District combines world class production studios with exciting dining options. The area includes The Walt Disney Company world headquarters, ABC Television, Warner Bros. Studios, iHeart Media, New Line Cinema, PBS SoCal, Legendary Entertainment, DC Comics, Hollywood Records and so much more. Current New developments within close proximity include WB Second Century project (800,000 SQ FT of entertainment office) 3700 Riverside Drive (a 49 luxury condo project), and SB 35 at 3201 W Olive (a 144 units apartment project) Toluca Lake: Toluca Lake is a neighborhood in Los Angeles, California with a population of 9,576. Toluca Lake is one of the best places to live in California with an average single family home price of \$1,334,137. Living in Toluca Lake offers residents an urban feel in a somewhat suburban neighborhood. In Toluca Lake there are a lot of bars, restaurants, coffee shops, and parks. Toluca lake is surrounded by Burbank, Studio City, and North Hollywood. A large portion of the residents works in the entertainment industry.



# SITE PLAN



# NEIGHBORING TENANTS



# DEMOGRAPHICS (3-MILE RADIUS)



Population  
176,902



Consumer Spending  
\$2.6B



Avg Income/Household  
\$111,630



Daytime Employees  
120K



Walk Score  
84



Median Home Value  
\$868,601



Avg Household Size  
2.2



Spending Food/Alcohol  
\$716,842,553



Median Age  
39





**COMMERCIAL  
ASSET GROUP**

These materials are based on information and content provided by others, which we believe are accurate. No guarantee, warranty or representation is made by Commercial Asset Group, Inc. or its personnel. All interested parties must independently verify accuracy and completeness. As well, any projections, assumptions, opinion, or estimates are used for example only and do not represent the current or future performance of the identified property. Your tax, financial, legal and toxic substance advisors should conduct a careful investigation of the property and its suitability for your needs, including land use limitations. The property is subject to prior lease, sale, change in price, or withdrawal from the market without notice.



**DAVID ASCHKENASY**  
EXECUTIVE VICE PRESIDENT  
310.272.7381  
DAVIDA@CAGRE.COM  
LIC. 01714442

**DAVID ICKOVICS**  
PRINCIPAL  
310.272.7380  
DJI@CAGRE.COM  
LIC. 01315424

**AIDAN NUSSBAUM**  
ASSOCIATE  
310.272.7384  
AIDAN@CAGRE.COM  
LIC. 02306324

**COMMERCIAL ASSET GROUP**  
190 N. CANON DRIVE, STE 300  
BEVERLY HILLS, CA 90210  
P: 310.275.8222 F: 310.275.8223  
CAGRE.COM LIC: 01876070