

GREENWICH VILLAGE, NEW YORK, NY

ONE

UNIVERSITY PLACE

JUST NORTH OF THE CORNER OF WAVERLY PLACE

**HIGH TRAFFIC VENTED SUPERMARKET—
POSSIBLE RESTAURANT
FOR LEASE**

THE DANA COMMERCIAL TEAM
 **Douglas Elliman** EST. 1911
REAL ESTATE

PROPERTY DETAILS

PREMISES

Ground Floor: 5,180 square feet

Basement: 2,500 square feet

FRONTAGE

Over 40 Feet of Frontage on University Place

POSSESSION

August/September 2026

RENT

\$60,000 per month

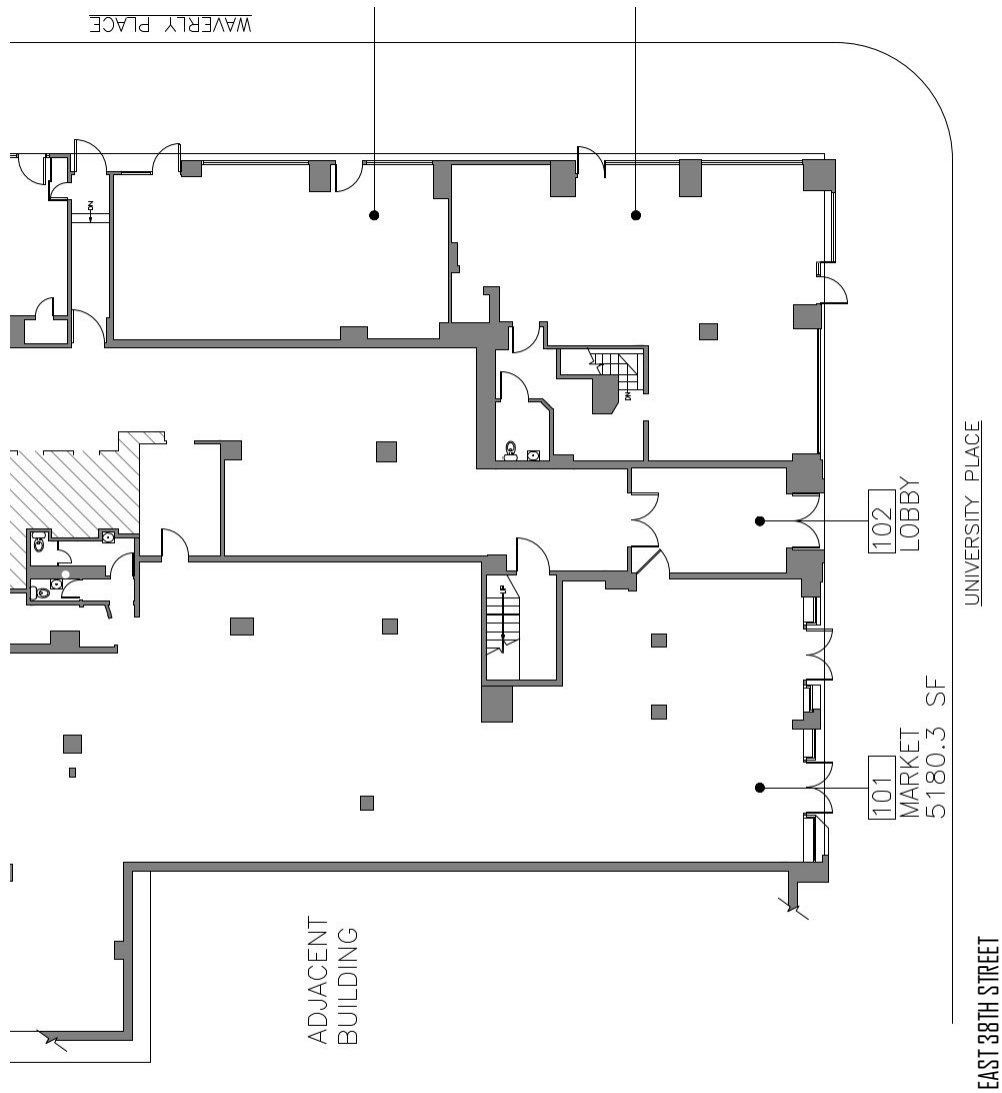
TENANT

Currently SPACE MARKET

1 UNIVERSITY PLACE

JUST NORTH OF WAVERLY PLACE





Exclusively for information only.

THE DANA COMMERCIAL TEAM

AT DOUGLAS ELLIMAN REAL ESTATE

MADISON AVENUE

GARY DANA 212.692.6183

CELL: 516.946.7207

gdana@elliman.com

RICK DANA 212.692.6182

CELL: 917.952.0624

rdana@elliman.com



THE DANA COMMERCIAL TEAM
Douglas Elliman EST. 1911
 REAL ESTATE

© 2017 DOUGLAS ELLIMAN REAL ESTATE. ALL MATERIAL PRESENTED HEREIN IS INTENDED FOR INFORMATION PURPOSES ONLY. WHILE THIS INFORMATION IS BELIEVED TO BE CORRECT, IT IS REPRESENTED SUBJECT TO ERRORS, OMISSIONS, CHANGES OR WITHDRAWAL WITHOUT NOTICE. ALL PROPERTY INFORMATION, INCLUDING, BUT NOT LIMITED TO SQUARE FOOTAGE, ROOM COUNT, NUMBER OF BEDROOMS AND THE SCHOOL DISTRICT IN PROPERTY LISTINGS SHOULD BE VERIFIED BY YOUR OWN ATTORNEY, ARCHITECT OR ZONING EXPERT. IF YOUR PROPERTY IS CURRENTLY LISTED WITH ANOTHER REAL ESTATE BROKER, PLEASE DISREGARD THIS OFFER. IT IS NOT OUR INTENTION TO SOLICIT THE OFFERINGS OF OTHER REAL ESTATE BROKERS. WE COOPERATE WITH THEM FULLY. EQUAL HOUSING OPPORTUNITY.