

FOR SALE/LEASE

Reduced
Price!

Units 122, 123 & 124

408 East Kent Avenue South

VANCOUVER, BC



8,244 SF Industrial Strata Units with Food Processing
Improvements Located in South Vancouver

CBRE

THE
INDUSTRIAL
SPECIALISTS

Opportunity to purchase 8,244 SF of warehouse space with grade loading in South Vancouver.

Property Details

PROPERTY SIZE	8,244 SF
LOADING DOORS	3 Grade Doors
CEILING HEIGHT	8 ft. - 19 ft.
ZONING	M-2
PROPERTY TAXES	\$14,190.90
STRATA FEES (2024)	\$1,106.91
YEAR BUILT	2006
BASIC RENT	\$19.95 PSF
ADDITIONAL RENT	\$7.55 PSF
ASKING PRICE	\$5,070,060 (\$615 PSF) \$4,286,800 (\$520 PSF)

**All areas are approximate and to be confirmed by the purchaser.*

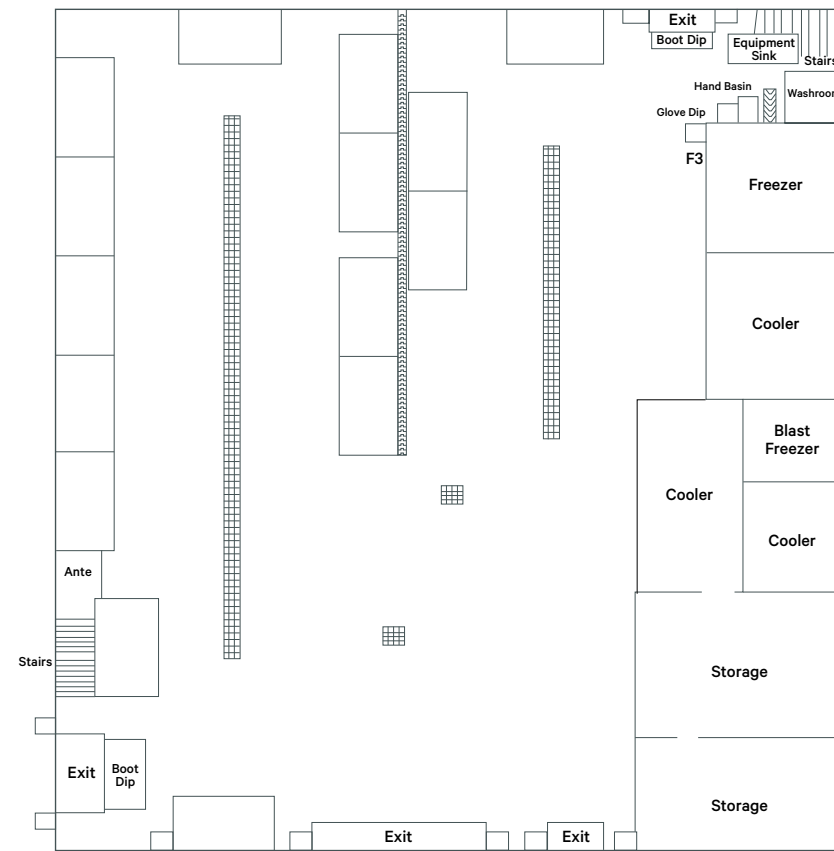
Unit Features

- Fully improved for fish processing & food processing end user
 - 1 x freezer
 - 1 x blast freezer
 - 3 x coolers
 - Floor drains
 - Epoxy floors
- Well maintained office
- Located in the highly sought-after Foreshore Business Park

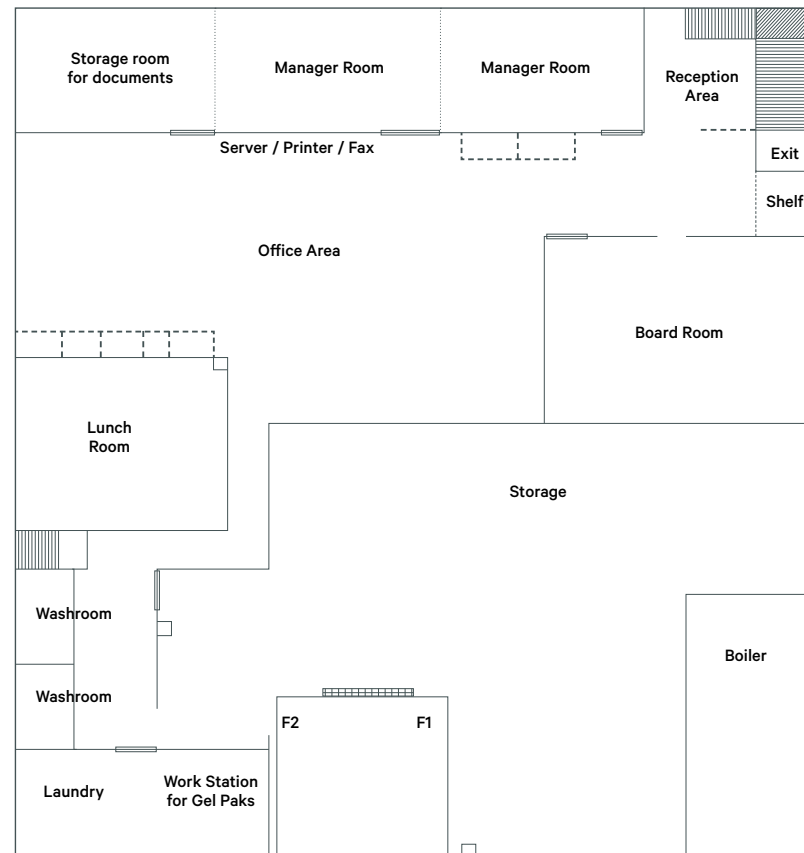
Floor Plan

*Floorplan not to scale

MAIN FLOOR



SECOND FLOOR



5

Minutes to Highway 99

5

Minutes to Knight Street Bridge

10

Minutes YVR Airport

20

Minutes to Downtown Vancouver



Convenient Access to Highway 91 & Metro Vancouver



Bus Routes Near Property



DOWNTOWN VANCOUVER

VANCOUVER

East Kent Avenue N

SUBJECT PROPERTY

LOCATION OVERVIEW

Located in the heart of South Vancouver’s industrial market, the Property offers unparalleled access to major transportation routes, including SE Marine Drive, Oak Street, and Knight Street. Its proximity to YVR airport and nearby retail and service amenities, such as Marine Gateway and the 26 SW Marine Drive Commercial development, make it an attractive location for trucking and transportation companies. The area is also poised for growth with the proposed Marine Gateway 2 mixed-use project, which will bring new energy and opportunities to the surrounding community.

CONNECT WITH US FOR MORE INFORMATION

LUC SOARES

Sales Associate
778 372 1938
luc.soares@cbre.com

STEVE BROOKE

PERSONAL REAL ESTATE CORPORATION
Executive Vice President
604 662 5147
steve.brooke@cbre.com

JOEL BARNETT

PERSONAL REAL ESTATE CORPORATION
Executive Vice President
604 662 5570
joel.barnett@cbre.com

ALEX MEI 梅嘉俊

PERSONAL REAL ESTATE CORPORATION
Associate Vice President
778 788 3106
alex.mei@cbre.com



theindustrialspecialists.com
@theindustrialspecialists

CBRE Limited | 1021 West Hastings Street #2500, Vancouver, BC V6E 0C3 | cbre.ca

This disclaimer shall apply to CBRE Limited, Real Estate Brokerage, and to all other divisions of the Corporation; to include all employees and independent contractors ("CBRE"). The information set out herein, including, without limitation, any projections, images, opinions, assumptions and estimates obtained from third parties (the "Information") has not been verified by CBRE, and CBRE does not represent, warrant or guarantee the accuracy, correctness and completeness of the Information. CBRE does not accept or assume any responsibility or liability, direct or consequential, for the Information or the recipient's reliance upon the Information. The recipient of the Information should take such steps as the recipient may deem necessary to verify the Information prior to placing any reliance upon the Information. The Information may change and any property described in the Information may be withdrawn from the market at any time without notice or obligation to the recipient from CBRE. CBRE and the CBRE logo are the service marks of CBRE Limited and/or its affiliated or related companies in other countries. All other marks displayed on this document are the property of their respective owners. All Rights Reserved. Mapping Sources: Canadian Mapping Services canadamapping@cbre.com; DMTI Spatial, Environics Analytics, Microsoft Bing, Google Earth, Images: Southgranville.org