

For Lease

RED

RENO EXPERIENCE DISTRICT



LOGIC



2072 Experience Ave.
Reno, NV 89502

Ian Cochran, CCIM
Partner
775.225.0826
icochran@logicCRE.com
B.0145434.LLC

Greg Ruzzine, CCIM
Partner
775.450.5779
gruzzine@logicCRE.com
BS.0145435

Point of contact

Grace Keating
Associate
775.870.7806
gkeating@logicCRE.com
S.0198962

Listing Snapshot



Negotiable
Lease Rate



± 1,759 SF
Available Square Footage



\$0.75 PSF NNN
Lease Expense

Property Highlights

- Class-A retail space with existing full service bar in place
- Positioned within the Reno Experience District complete with +/- 65,000 SF of retail, 897 luxury apartments, a 170-door luxury hotel, and an 83-door flex-stay corporate apartment project
- Strategically located in the heart of Reno just South of the MidTown district and Reno Public Market
- High population area with over 6,400 residents within a 0.5-mile radius and over 63,000 within a 2-mile radius
- Heavy daytime population with over 8,000 employees within a 0.5-mile radius across more than 400 businesses
- Current tenants include Hub Coffee, Heyday Barber Co., Electric Pickle Pickelball Courts, and Country Creamery

Demographics

	1-mile	3-mile	5-mile
2025 Population	27,177	121,733	238,448
2025 Average Household Income	\$78,419	\$96,023	\$101,243
2025 Total Households	12,400	53,874	101,495





Retail

CINEMARK
CENTURY PARK LANE 16

Retail

Heyday
BARBER CO.

COUNTRY CREAMERY

SOBBZLN
TRUCKEE & RENO

AVAILABLE

± 1,759 SF

Hotels/Casinos

Atlantis Casino Resort Spa
± 824 Rooms

Retail

element
INSPIRED BY WESTERN
± 170 Rooms

electric fiddle
Coming Soon

Retail

Heritage Bank
of Nevada
Division of Glacier Bank

Hotels/Casinos

Peppermill Resort Spa Casino
± 1,621 Rooms

Retail

Orchard Plaza

AMERICAN FAMILY INSURANCE

Black Bear Diner

El Pollo Loco



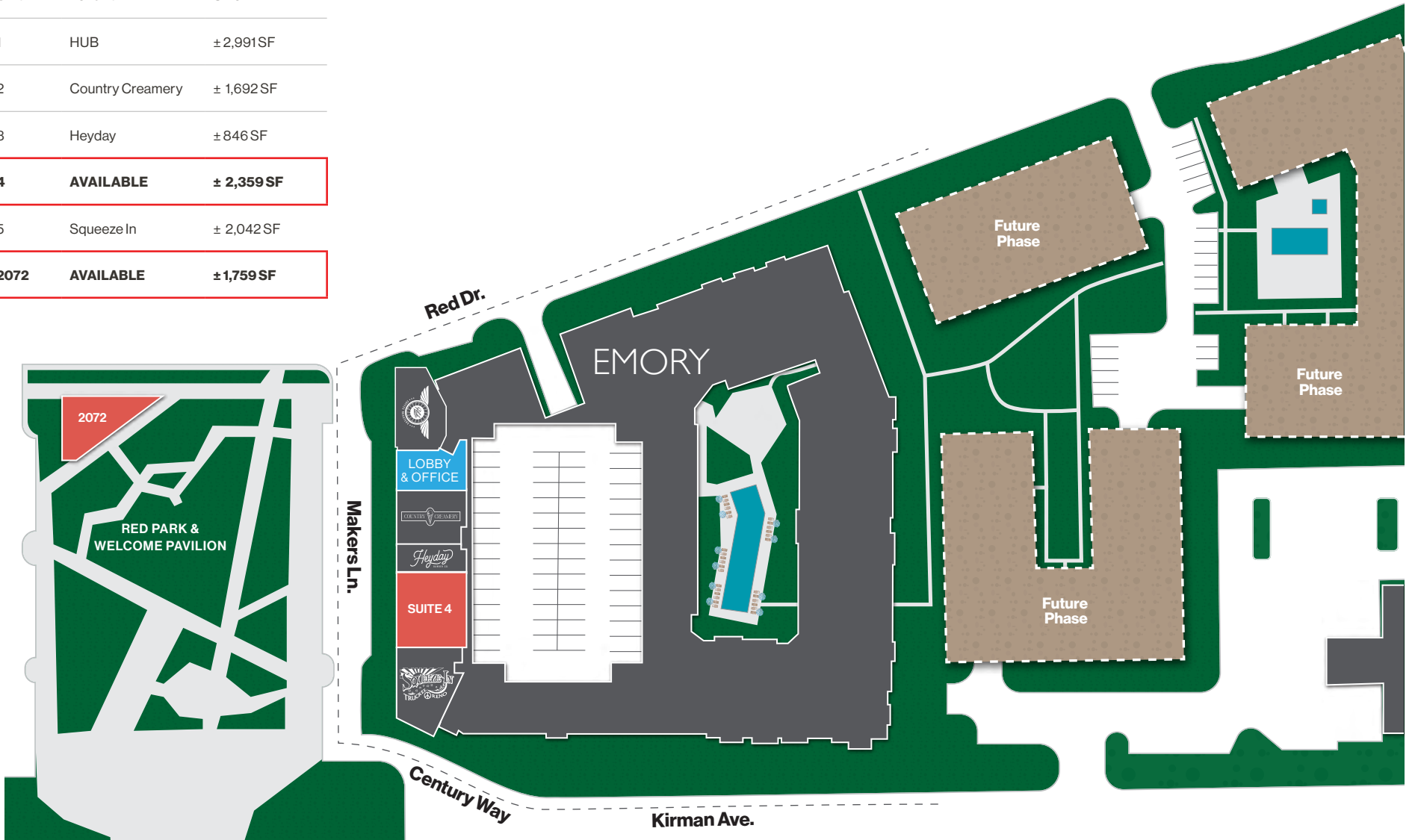
Future Development Phase

Future Development Phase

Site Plan | Emory

Available ■ NAP

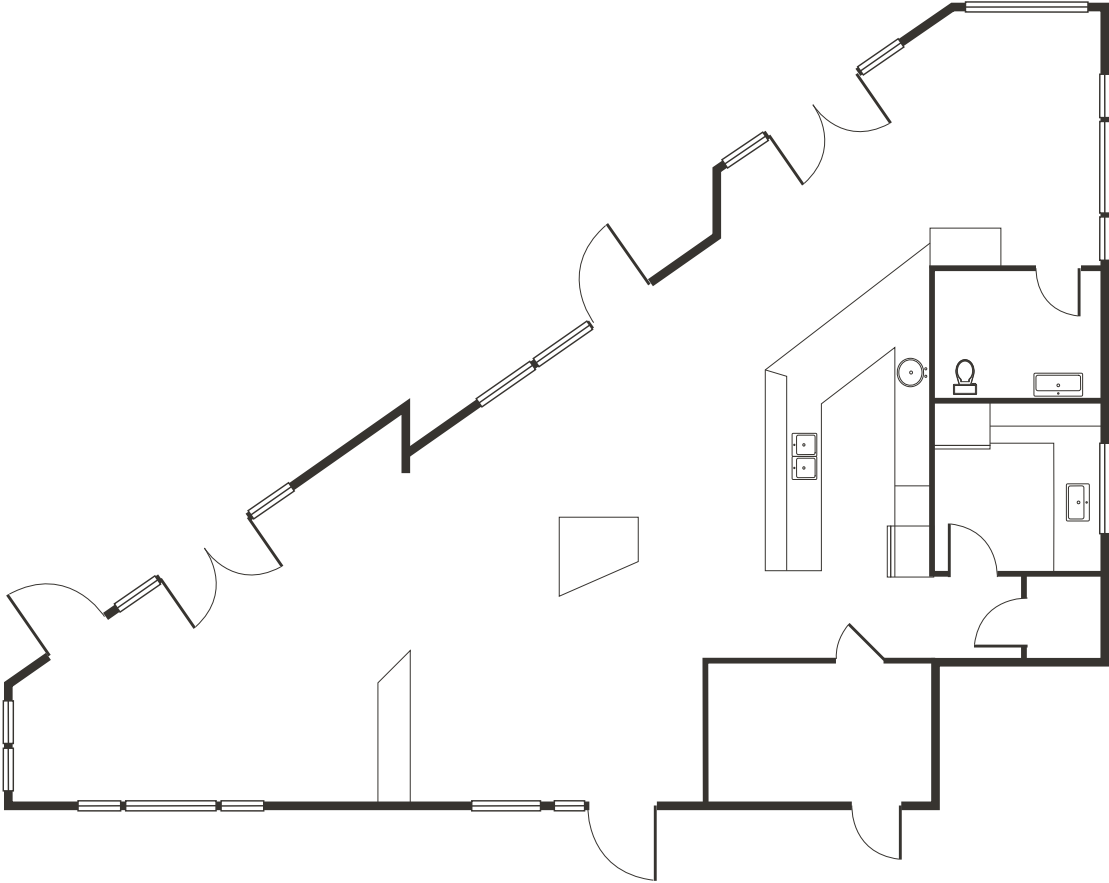
Unit	Tenant	Size
1	HUB	± 2,991SF
2	Country Creamery	± 1,692SF
3	Heyday	± 846SF
4	AVAILABLE	± 2,359 SF
5	Squeeze In	± 2,042SF
2072	AVAILABLE	± 1,759 SF



[Click for a Virtual Tour of Suite 2072](#)



Floor Plan | ± 1,759 SF



Property Photos



LOGIC Commercial Real Estate

Specializing in Brokerage and Receivership Services



Join our email list and
connect with us on LinkedIn

The information herein was obtained from sources deemed reliable; however LOGIC Commercial Real Estate makes no guarantees, warranties or representation as to the completeness or accuracy thereof.

For inquiries please reach out to our team.

Ian Cochran, CCIM

Partner
775.225.0826
icochran@logicCRE.com
B.0145434.LLC

Greg Ruzzine, CCIM

Partner
775.450.5779
gruzzine@logicCRE.com
BS.0145435

Point of contact

Grace Keating

Associate
775.870.7806
gkeating@logicCRE.com
S.0198962