

1955 E 87th St, Chicago, IL 60617

Southwest Corner 87th & Jeffery



OFFERING SUMMARY

Sale Price:	\$385,000
Lot Size:	0.38 Acres
Zoning:	B3-1
Submarket:	South Chicago
Price / SF:	\$23.33

PROPERTY HIGHLIGHTS

- 16,500sf Hard Corner Location (132' x 125')
- 4- Way Traffic Light Intersection
- Densely Populated Area
- B3-1 Zoning
- High Traffic Counts (32,300 vehicles per day)
- Great Location at a Busy Intersection
- 132 Ft Frontage along 87th ST

for more information

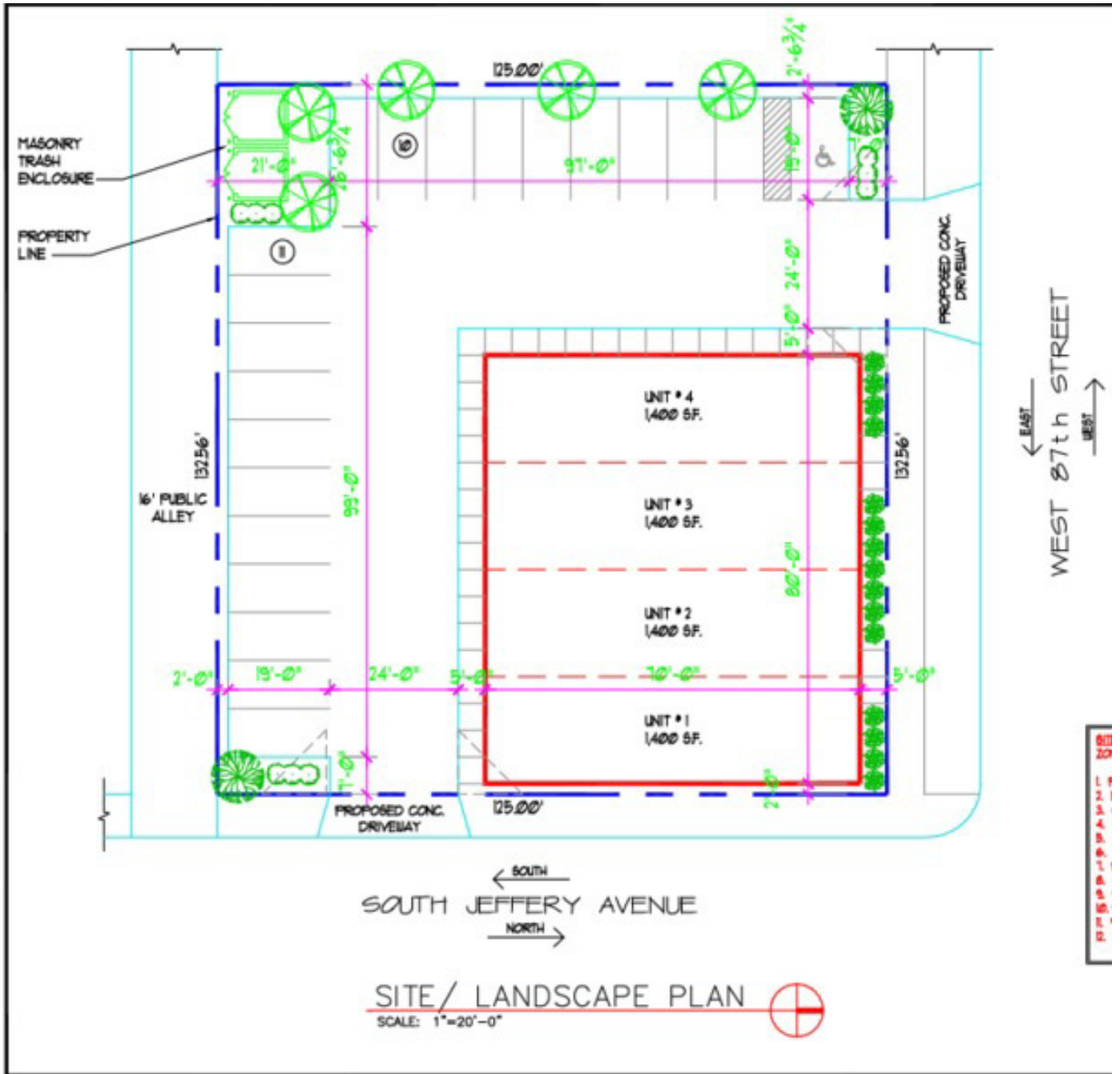
Neil Haleem

708.873.5540

neil@networkregroup.com

1955 E 87th St, Chicago, IL 60617

Southwest Corner 87th & Jeffery



Land For Sale February 20, 2026

for more information

Neil Haleem

708.873.5540

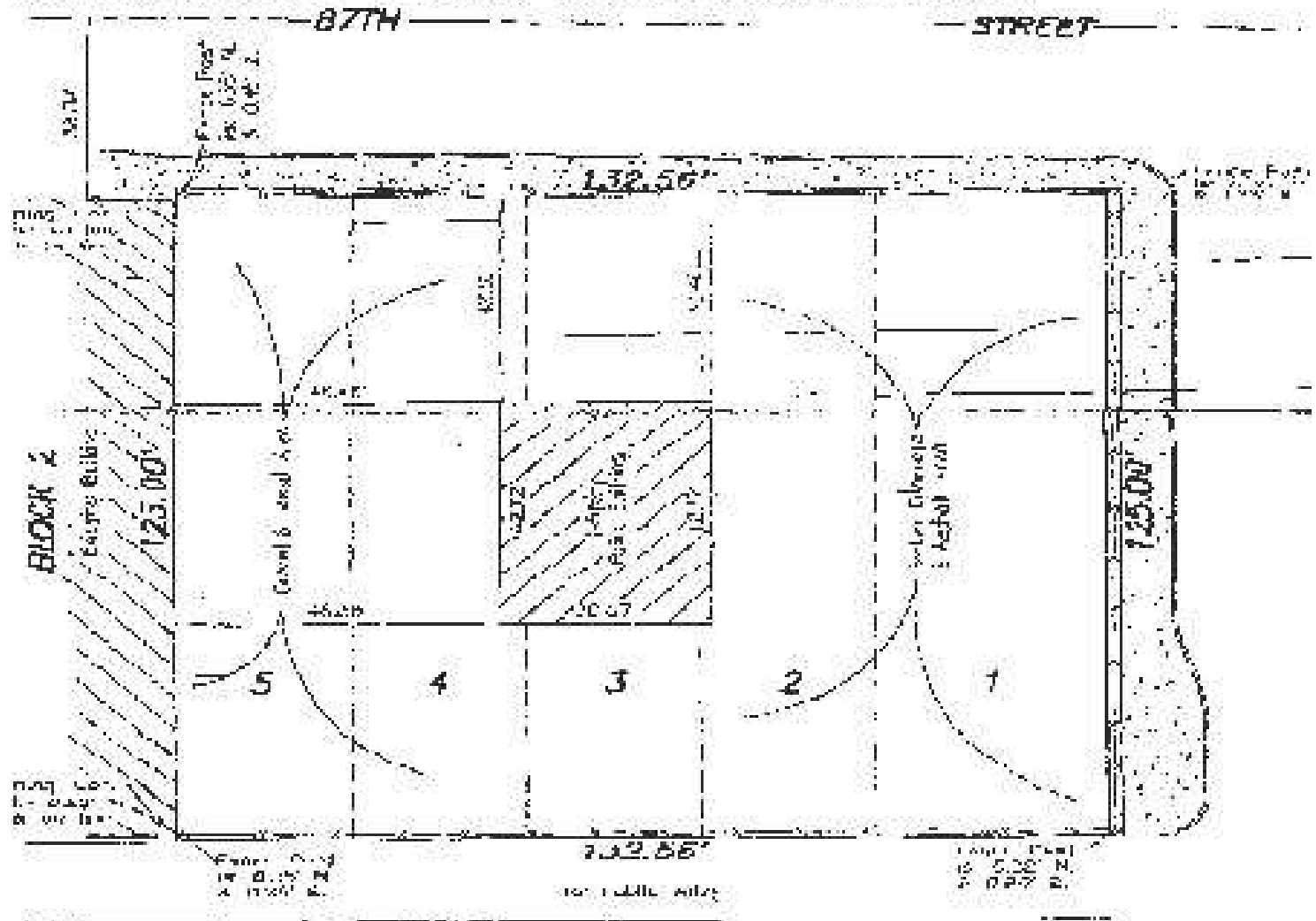
neil@networkregroup.com



1955 E 87th St, Chicago, IL 60617

Southwest Corner 87th & Jeffery

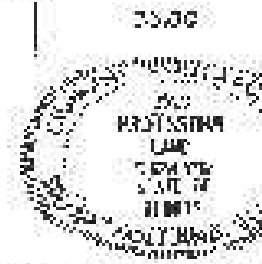
SOUTHWEST 1/4 OF SECTION 1, TOWNSHIP 37 NORTH, RANGE 14 EAST OF THE THIRD PRINCIPAL MERIDIAN, IN COOK COUNTY, ILLINOIS.



100 South Jeffery Avenue
Chicago, Illinois

Christy A. Christy
02-03-05

State of Illinois
County of Cook
I, GIOVANNI PUGLIONE, a Registered Professional Land Surveyor, do hereby certify that I have examined the above plat and find it correct.



for more information

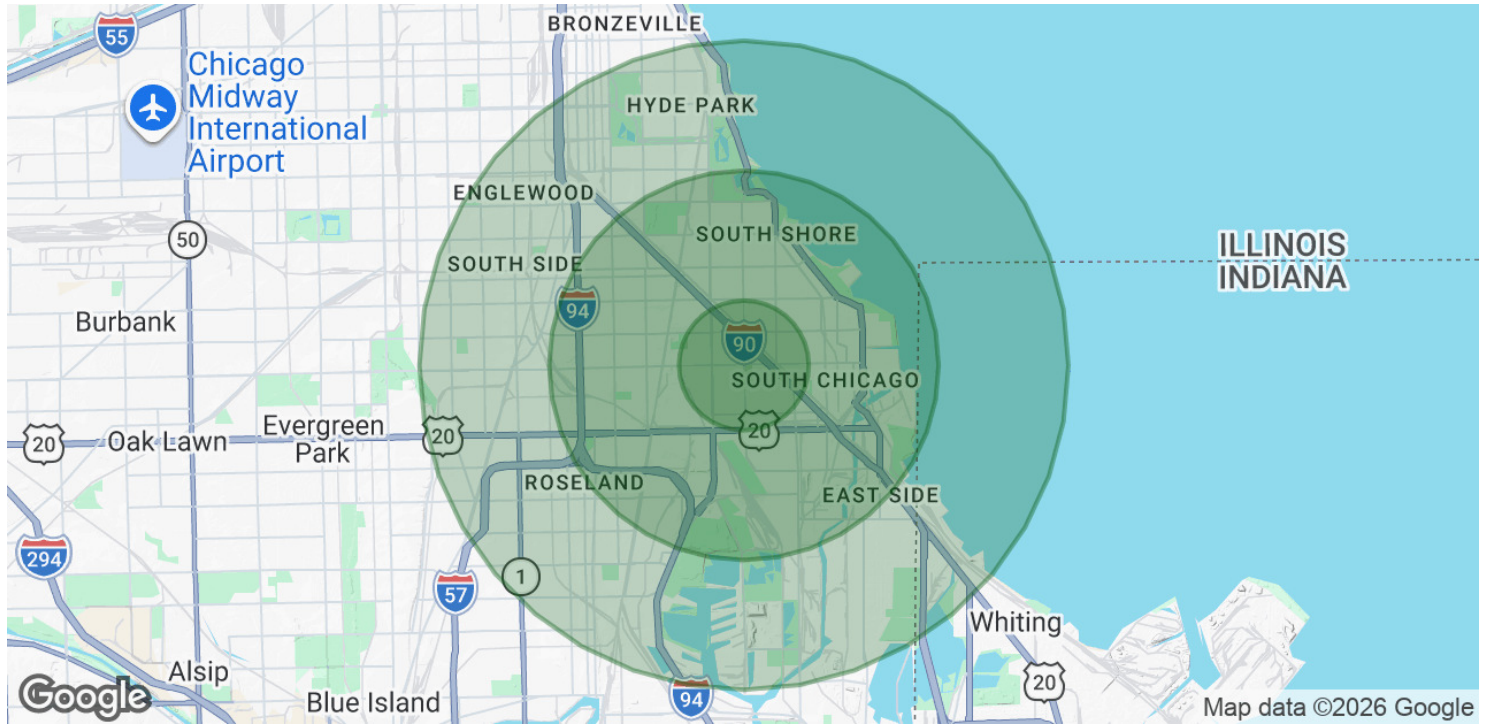
Neil Haleem
708.873.5540
neil@networkregroup.com



Land For Sale February 20, 2026

1955 E 87th St, Chicago, IL 60617

Southwest Corner 87th & Jeffery



POPULATION	1 MILE	3 MILES	5 MILES
Total Population	26,034	191,441	442,128
Average Age	46	42	41
Average Age (Male)	43	40	39
Average Age (Female)	48	43	42
HOUSEHOLDS & INCOME	1 MILE	3 MILES	5 MILES
Total Households	11,121	84,368	189,415
# of Persons per HH	2.3	2.3	2.3
Average HH Income	\$79,484	\$63,468	\$67,457
Average House Value	\$233,438	\$249,366	\$268,623
ETHNICITY (%)	1 MILE	3 MILES	5 MILES
Hispanic	4.6%	9.7%	10.4%
RACE	1 MILE	3 MILES	5 MILES

for more information

Neil Haleem

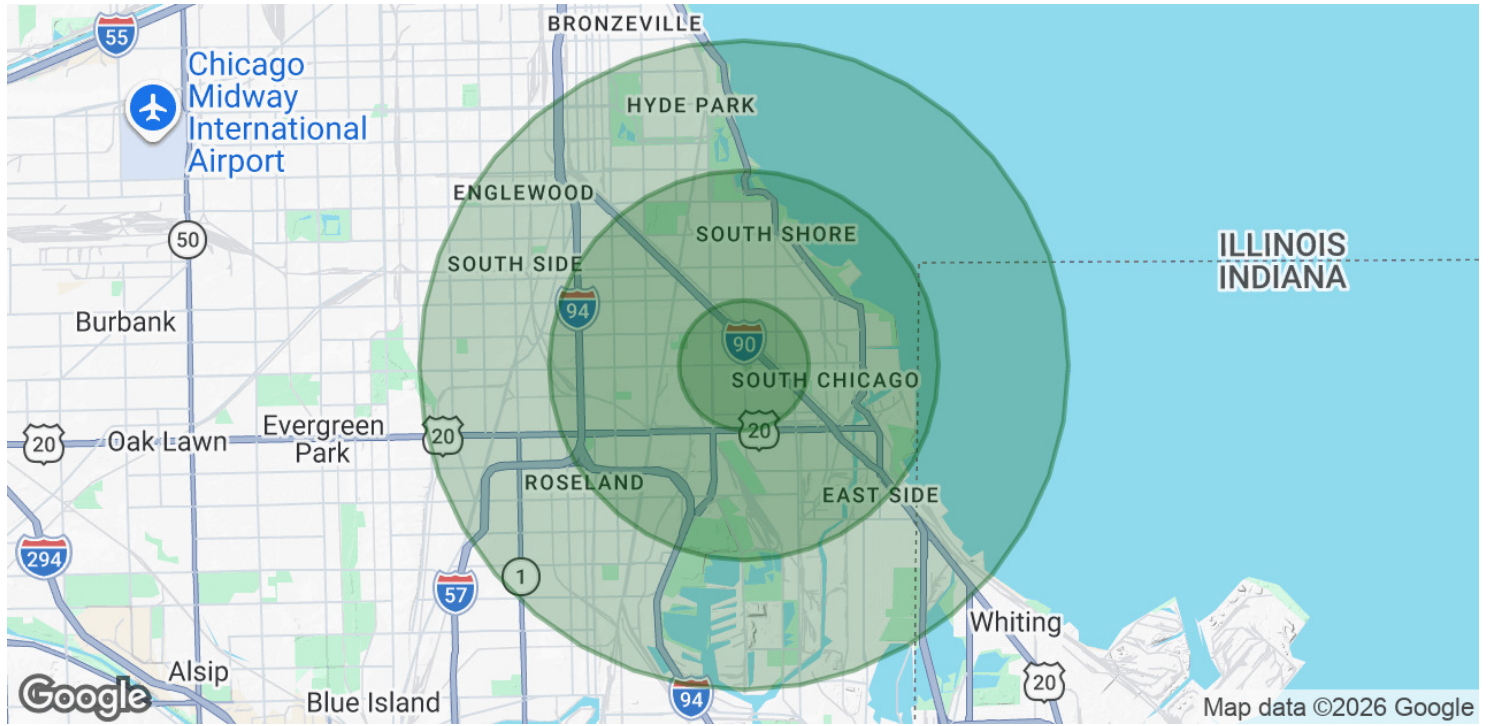
708.873.5540

neil@networkregroup.com



1955 E 87th St, Chicago, IL 60617

Southwest Corner 87th & Jeffery



Total Population - White	349	5,723	31,361
% White	1.3%	3.0%	7.1%
Total Population - Black	24,071	165,675	354,187
% Black	92.5%	86.5%	80.1%
Total Population - Asian	51	435	7,598
% Asian	0.2%	0.2%	1.7%
Total Population - Hawaiian	2	52	120
% Hawaiian	0.0%	0.0%	0.0%
Total Population - American Indian	60	755	2,024
% American Indian	0.2%	0.4%	0.5%
Total Population - Other	607	9,387	22,269
% Other	2.3%	4.9%	5.0%

* Demographic data derived from 2020 ACS - US Census

for more information

Neil Haleem

708.873.5540

neil@networkregroup.com

