







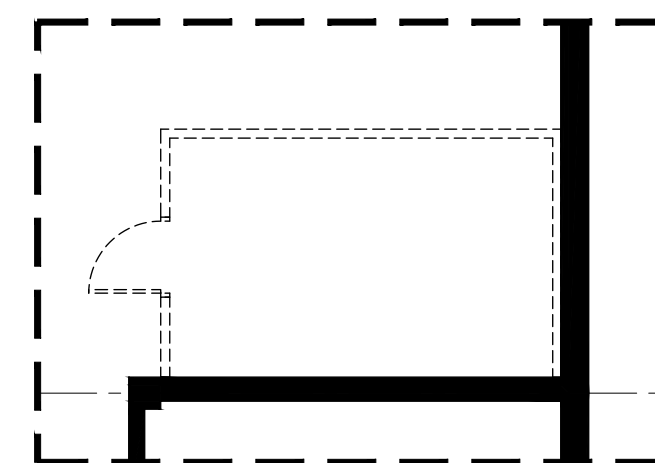


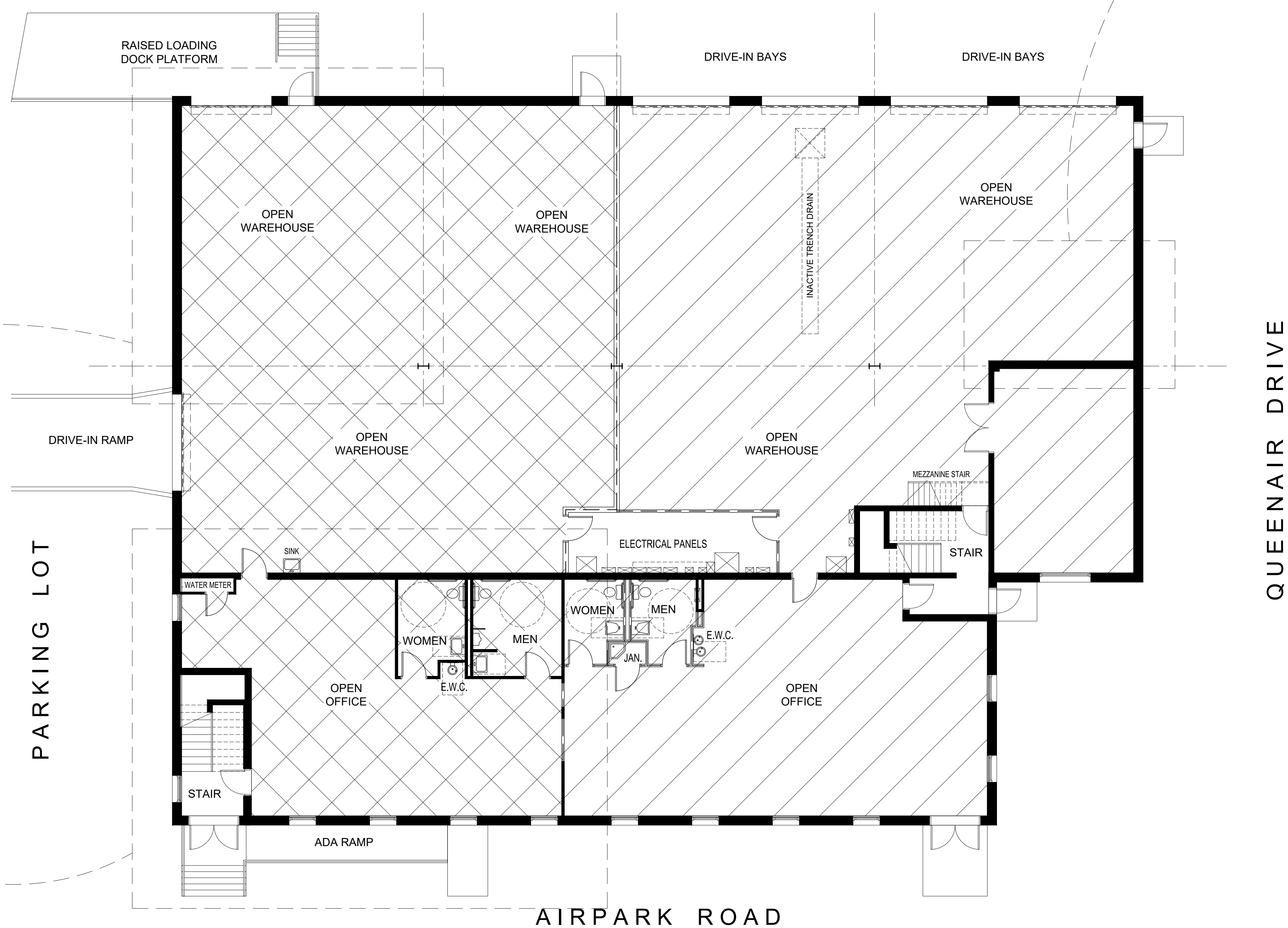
DESIGN INTENT LEGEND

-  EXISTING PARTITION
-  DEMOLISHED PARTITION
-  BREAK GRID PARTITION
-  INSULATED PARTITION
-  DEMISING PARTITION
-  DOOR TAG
-  INDICATES TENANT 'A' = 47% OF 1ST FLOOR  
(9,871 SF X 0.47 = 4,639 SF)
-  INDICATES TENANT 'B' = 53% OF 1ST FLOOR  
(9,871 SF X 0.53 = 5,232 SF)

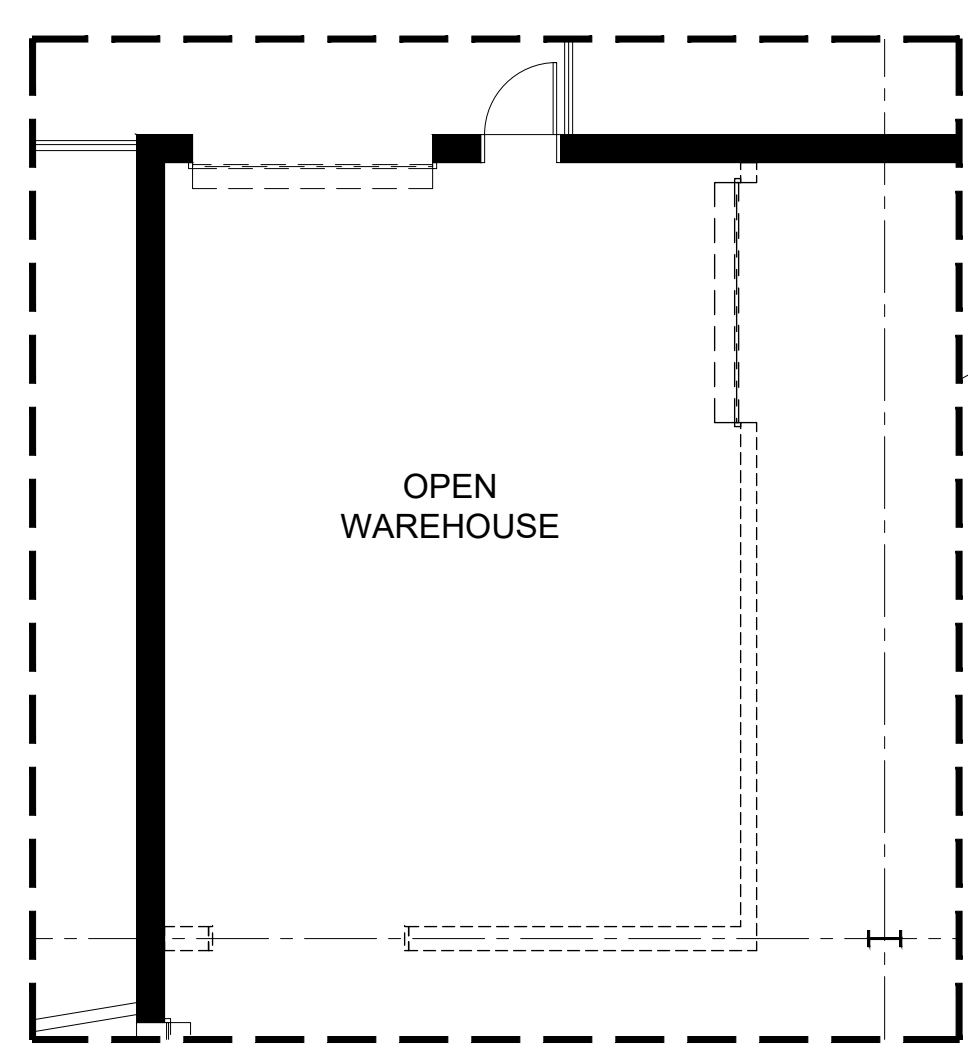
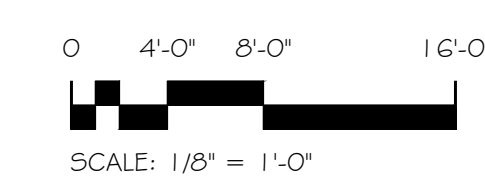


4 SELECTIVE DEMOLITION PLAN  
SCALE: 1/8" = 1'-0"

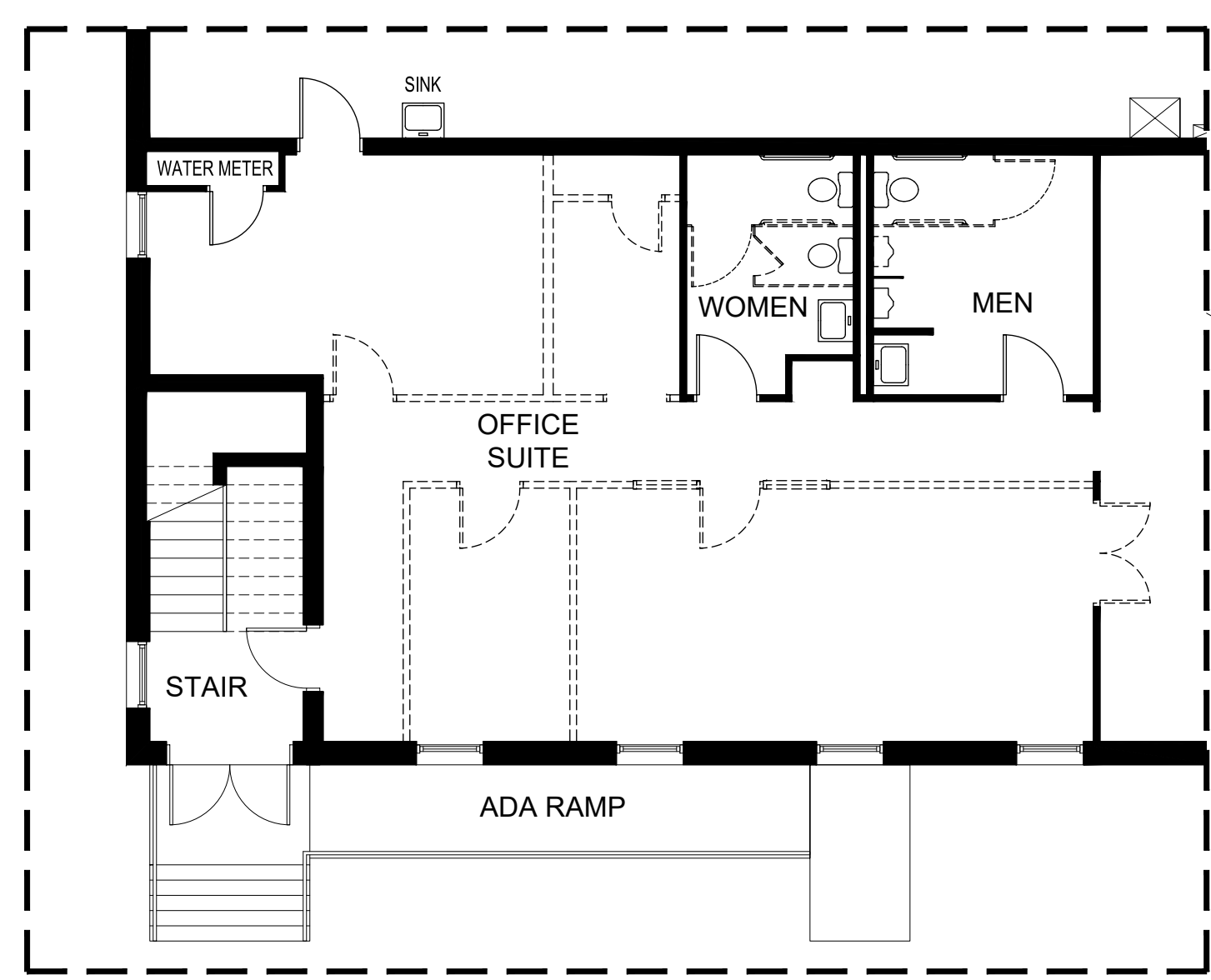
LOADING BAYS



1 TEST FIT PLAN  
SCALE: 1/8" = 1'-0"



3 SELECTIVE DEMOLITION PLAN  
SCALE: 1/8" = 1'-0"



2 SELECTIVE DEMOLITION PLAN  
SCALE: 1/8" = 1'-0"

**interplan**  
2650 Park Tower Drive, Suite 210, Vienna, Virginia 22180  
o: 202.362.5300 | f: 202.686.9273 | www.interplaninc.com

MPE ENGINEER:

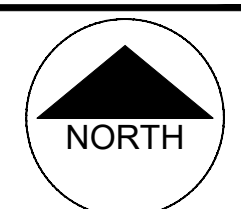
PROFESSIONAL CERTIFICATION: I CERTIFY THAT THESE DOCUMENTS WERE PREPARED OR APPROVED BY ME, AND THAT I AM A DULY LICENSED ARCHITECT UNDER THE LAWS OF THE STATE OF MARYLAND, LICENSE NO. 15074 EXPIRATION DATE: APRIL 6, 2027.

DEMISING PLAN FOR:  
**7905 AIRPARK BLDG.**  
7905 AIRPARK ROAD  
GAITHERSBURG, MD 20879

No.	Date	Issue
-	5.19.26	CLIENT REVIEW, TF-1
-	6.9.26	CLIENT REVIEW, TF-2

Design:  
RBJ

Approved:  
RBJ



PRELIMINARY SPACE PLAN

Scale: 1/8" = 1'-0"  
Job No. 4907

Sheet Number  
**TF-2**

1:4807 7905 airpark road - interior demising plan(1)-sd-1p-1907 base b