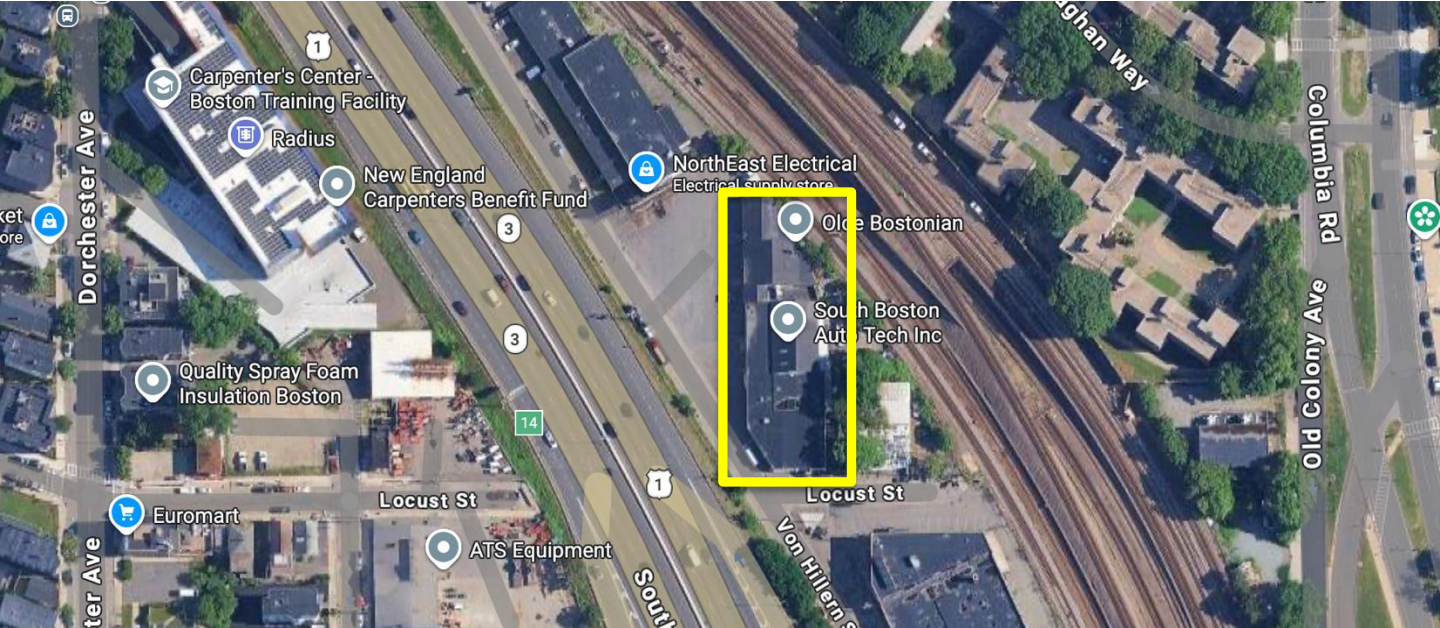


193,000 CARS
DRIVE BY DAILY!

WAREHOUSE/SHOWROOM/ OFFICE SPACE FOR LEASE

66 VON HILLERN STREET | BOSTON

Just south of Andrew Square, with unmatched Southeast Expressway visibility



±3,529 SF total

contiguous:

- ±2,052 SF (one tailboard dock)
- ±1,477 SF* (studio/showroom/office)

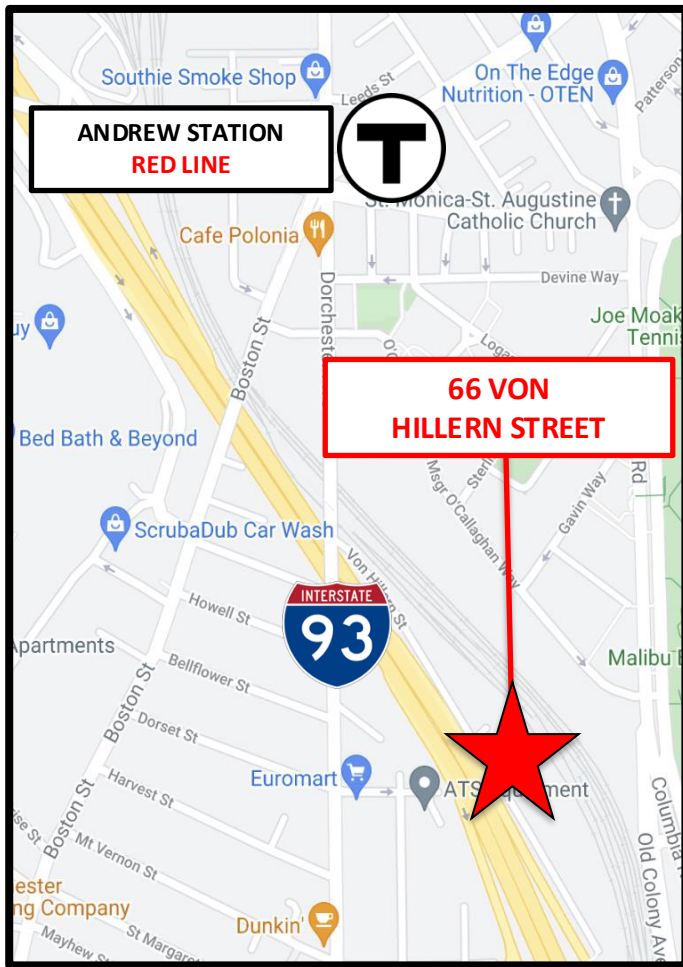
**Smaller space could be leased in and of itself*



JP Plunkett | Principal | plunkett@r-dome.com | 617.999.4993
David Anderson | Director | anderson@r-dome.com | 617.240.5292
540 Gallivan Boulevard, Suite 208, Boston, MA 02124



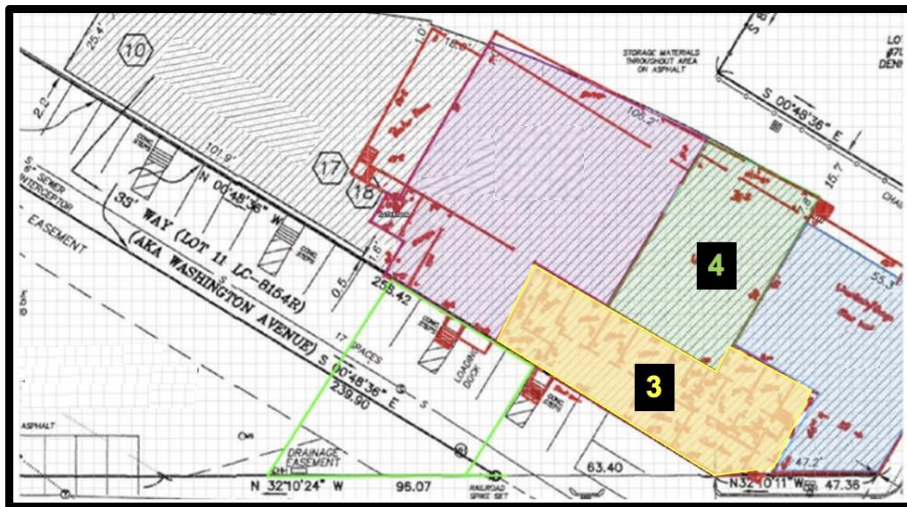
www.r-dome.com | @reddomerealty



View of Southeast Expressway/Route 93, Carpenters Union headquarters and Back Bay office towers – from atop the front loading platform

LESS THAN ONE MILE FROM:

SOUTH BAY CENTER	ON THE DOT
	
	
	



Green space (#4) is the $\pm 2,052$ SF space, and yellow space (#3) is the $\pm 1,477$ SF space. The combined suites provide parking for eight cars (three and five, respectively) and, depending on terms, perhaps more.



Small backyard outdoor storage area