

NOW LEASING · HOUSTON, TX

FROM \$420 / MONTH

Office Suites Available.

17150 BUTTE CREEK ROAD · HOUSTON, TEXAS



9

AVAILABLE OFFICES

300-400

SQUARE FEET EACH

\$1.40

PER SF / MONTH

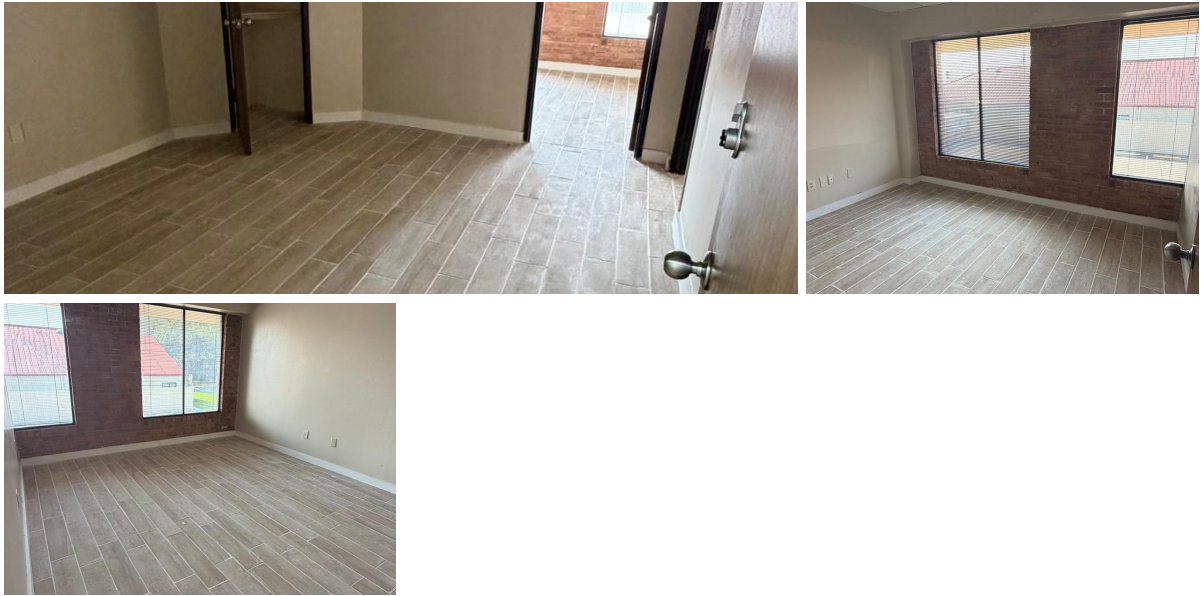
2

STORY BUILDING

PROPERTY OVERVIEW

Renovated interiors. Professional address. Flexible terms.

Newly renovated private offices in a well-established two-story brick building on the 1960 corridor. Move-in ready with fresh wood-look tile floors, updated finishes, and natural light. Flexible lease terms — ideal for startups, solo practitioners, small teams, or professionals who need a serious workspace without a long-term commitment.



WHAT'S INCLUDED

<ul style="list-style-type: none"> ◆ NEWLY RENOVATED INTERIORS 	<ul style="list-style-type: none"> ◆ AMPLE PARKING - FREE
<ul style="list-style-type: none"> ◆ NATURAL LIGHT / LARGE WINDOWS 	<ul style="list-style-type: none"> ◆ FLEXIBLE LEASE TERMS
<ul style="list-style-type: none"> ◆ 300-400 SF PRIVATE OFFICES 	<ul style="list-style-type: none"> ◆ 1960 CORRIDOR - EASY ACCESS

Schedule a Tour Today

17150 BUTTE CREEK RD · HOUSTON, TX

936-358-8827

CALL OR TEXT · AVAILABLE NOW

