

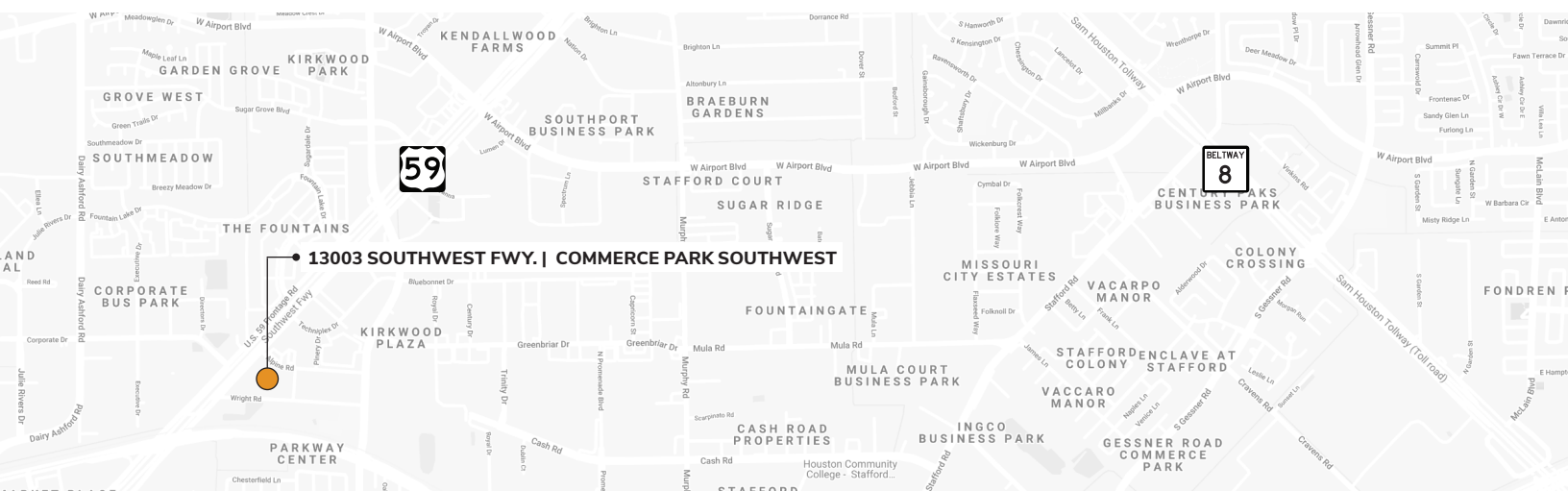
# FOR LEASE

## COMMERCE PARK SOUTHWEST 13003 SOUTHWEST FWY., SUITE 145



## BUILDING SPECIFICATIONS

<b>Address:</b>	13003 Southwest Fwy., Suite 145   Stafford, TX 77477
<b>Suite Size:</b>	4,282 SF
<b>Office:</b>	3,372 SF
<b>Warehouse:</b>	910 SF
<b>Truck Loading:</b>	2 grade-level doors
<b>Clear Height:</b>	12'
<b>Overview:</b>	Great access to Highway 59, Highway 90 and Beltway 8.



Owned By  
**maple**tree

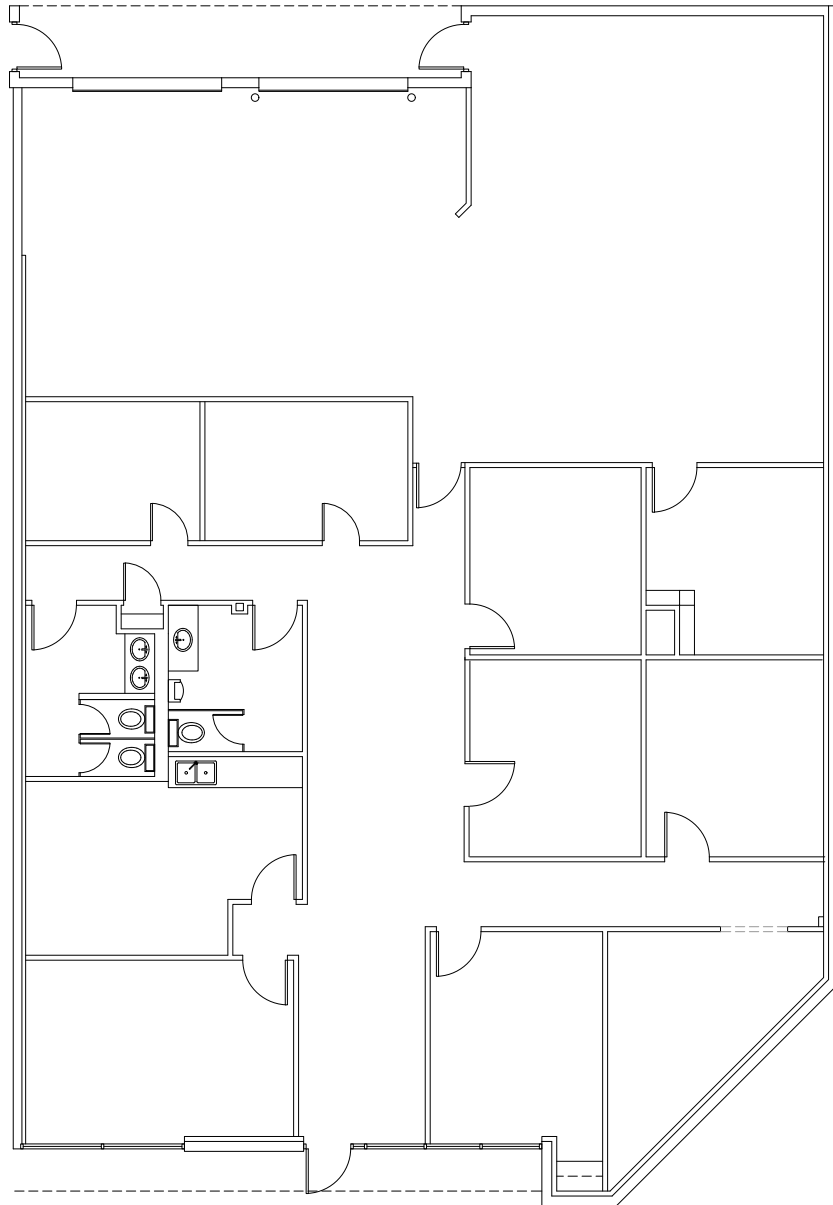
Leasing By  
**STREAM**

Meg Zschappel | 713.300.0284 | meg.zschappel@streamrealty.com

Jack Rathe | 972.655.9067 | jack.rathe@streamrealty.com

# FOR LEASE

COMMERCE PARK SOUTHWEST  
13003 SOUTHWEST FWY., SUITE 145



Owned By

maple<sup>tree</sup>

Leasing By

STREAM<sup>®</sup>

Meg Zschappel | 713.300.0284 | meg.zschappel@streamrealty.com

Jack Rathe | 972.655.9067 | jack.rathe@streamrealty.com