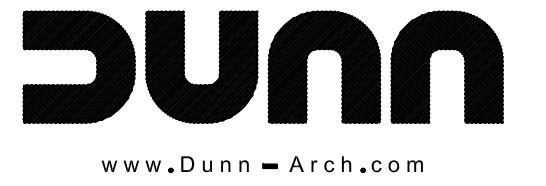


GENERAL NOTES

- 1. ALL DIMENSIONS AND EXISTING CONDITIONS SHALL BE CHECKED AND VERIFIED BY THE CONTRACTOR AT THE SITE.



Dunn and Associates Inc
412 422 4622
architecture • planning • interiors
5813 FORBES AVE.
PITTSBURGH, PA 15217
f. 412 422 4206

REGISTRATION:

**EXISTING
CONDITIONS AT
STOREROOM
#2**

ST. MARYS PLAZA
SOUTH ST. MARYS STREET
ST. MARYS, PA 15857

THIS DRAWING IS THE PROPERTY OF
DUNN AND ASSOCIATES, INC. WHO
CLAIMS PROPRIETARY RIGHTS IN THE
MATERIAL DISCLOSED. IT IS ISSUED
IN CONFIDENCE FOR DESIGN AND/OR
CONSTRUCTION INFORMATION ONLY
AND MAY NOT BE COPIED WITHOUT
SPECIFIC WRITTEN PERMISSION FROM
DUNN AND ASSOCIATES, INC.

REVISIONS:

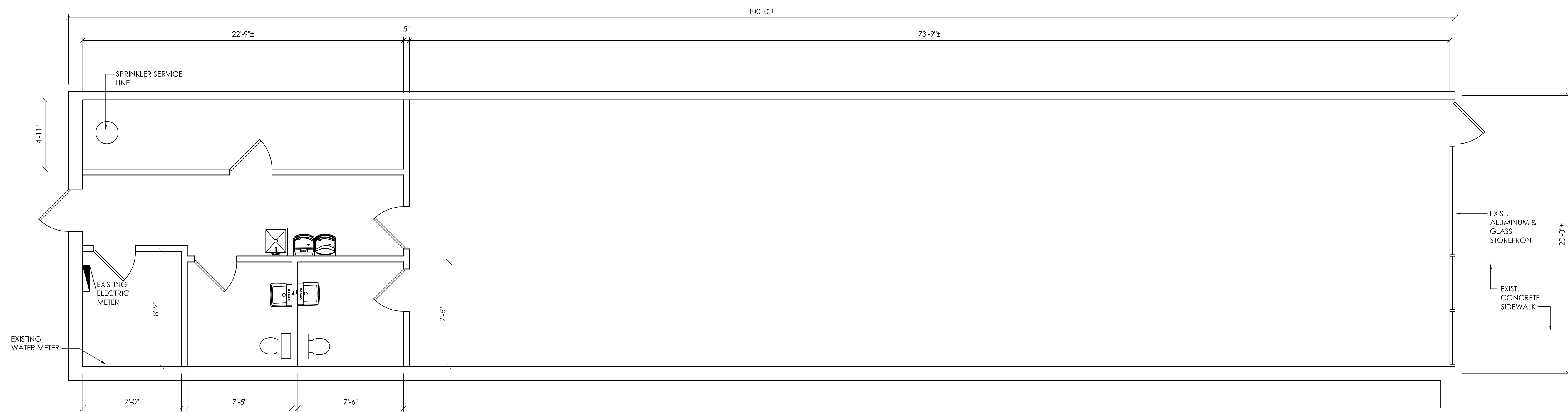
PROJECT NUMBER 1967
DATE NOVEMBER 25, 2019
DRAWN BY REB
FILE ure/stmarys/#2/ax101-plans

DRAWING TITLE:

EXISTING
FLOOR PLAN

DRAWING NUMBER:

AX1.1
SHEET 1 OF 1



EXISTING FLOOR PLAN

SCALE: 1/4"=1'-0"

