



**Social Hall**  
PLAZA  
at CITY CREEK

**Jordan Johnson**  
801.321.8711  
[Jordan.Johnson@propertyreserve.org](mailto:Jordan.Johnson@propertyreserve.org)



### **Address**

150 East Social Hall Avenue, Salt Lake City, Utah 84111

### **Social Hall Plaza Overview**

Class A office space  
161,307 square feet  
6 floors  
Built in 1998

Social Hall Plaza at City Creek is a six-story, multi-tenant office building in the heart of Salt Lake City's central business district. Remodeled and updated lobby with added amenities, which include a fitness center with showers and a bike storage area. Social Hall Plaza features covered garage parking, close proximity to Harmon's Market, and provides nearby access to City Creek Center, one of the nation's largest and most acclaimed mixed-use downtown redevelopment projects. This unique environment features a retractable glass roof, the very popular City Creek Center food court, a creek that runs through the property, a pedestrian sky bridge and more. City Creek Center features world-class fashion and dining destinations with over 100 national stores and restaurants.



### **Parking**

Covered-executive parking below the building & multiple other options for parking needs at prevailing market rates

### **Public Transit**

Within easy walking distance to bus stations, TRAX stations, and Frontrunner stations

### **Lease Rate**

Modified gross lease

### **Improvements**

Generous TI packages available, remodeled gym and lobby



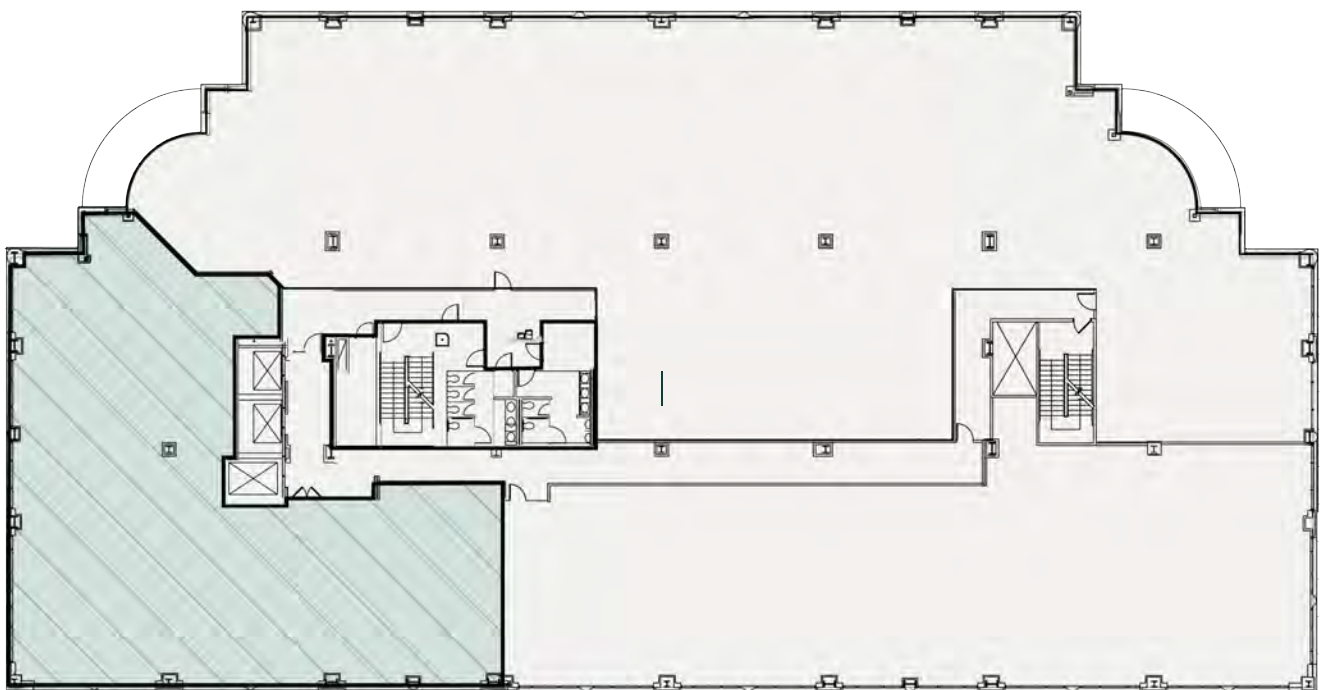
## Suite 250

Rentable Square Feet: 6,200

Lease Rates: \$28.00 - \$30.00 RSF

Status: Available

Condition: Gray shell ready for immediate build out



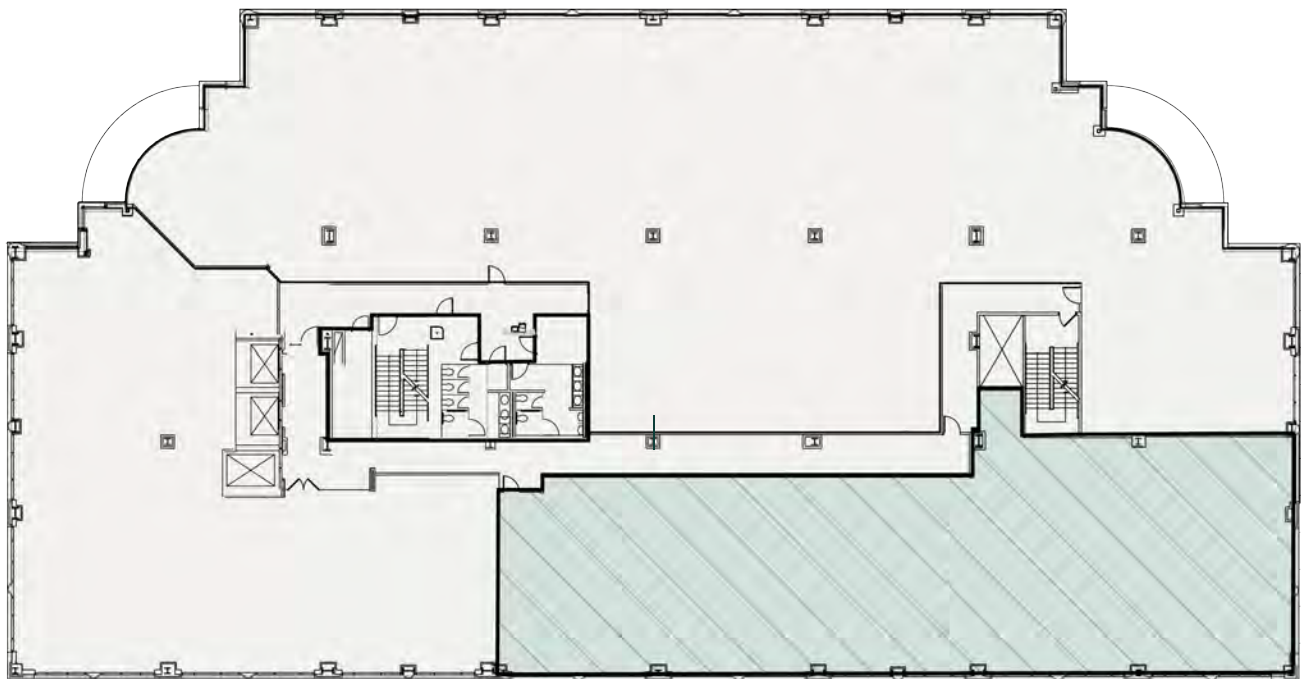
## Suite 275

Rentable Square Feet: 7,529

Lease Rates: \$28.00 - \$30.00 RSF

Status: Available

Condition: Gray shell ready for immediate build out



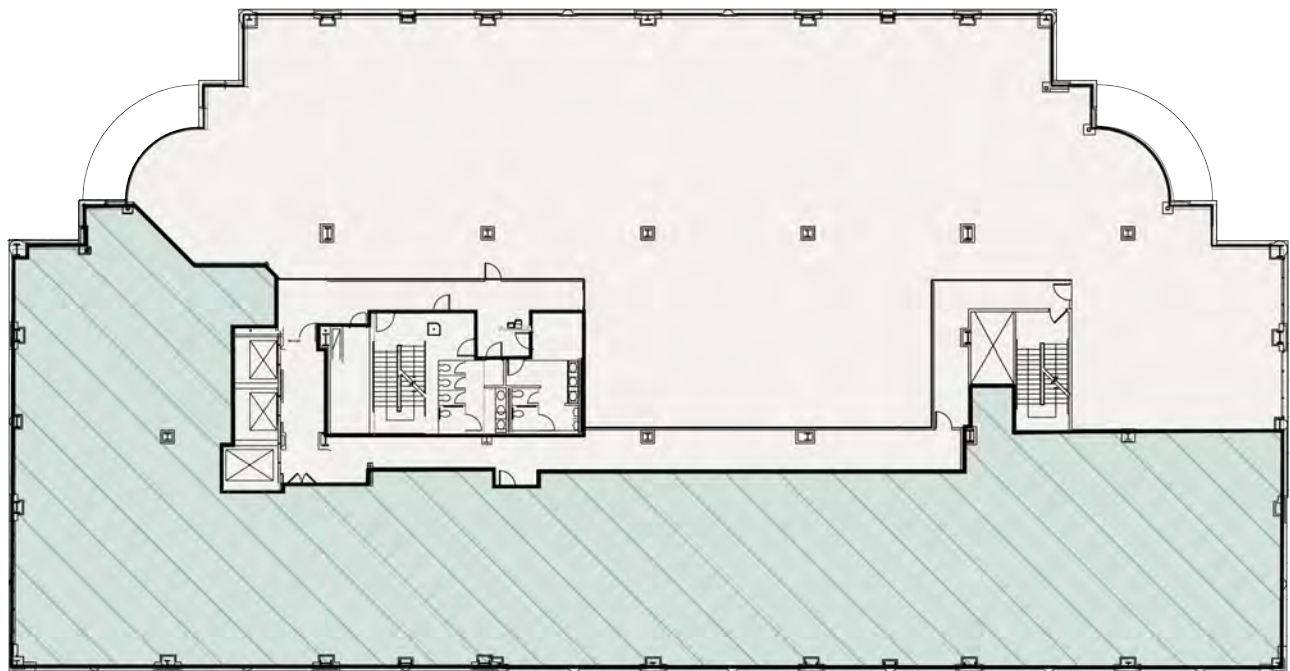
## Suite 250 + 275

Rentable Square Feet: 13,729

Lease Rates: \$28.00 - \$30.00 RSF

Status: Available

Condition: Gray shell ready for immediate build out



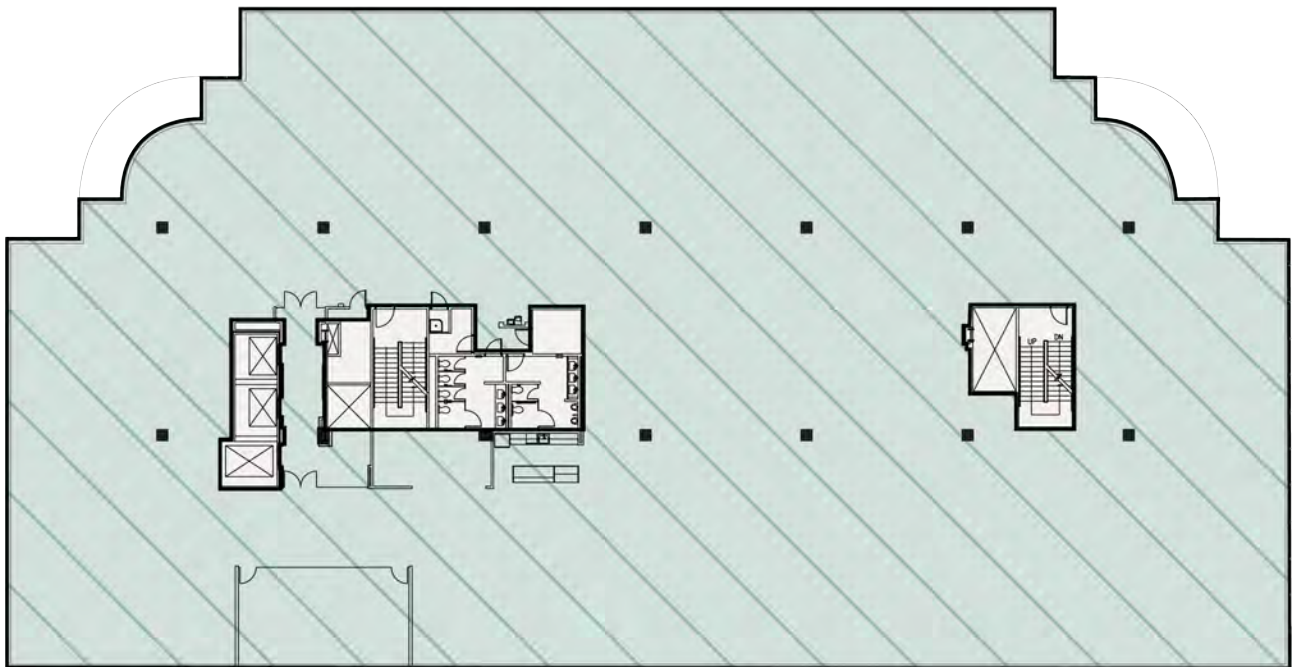
# Suite 300

Rentable Square Feet: 27,869

Lease Rates: \$29.00 - \$31.00 RSF

Status: Available

Condition: Gray shell ready for immediate build out



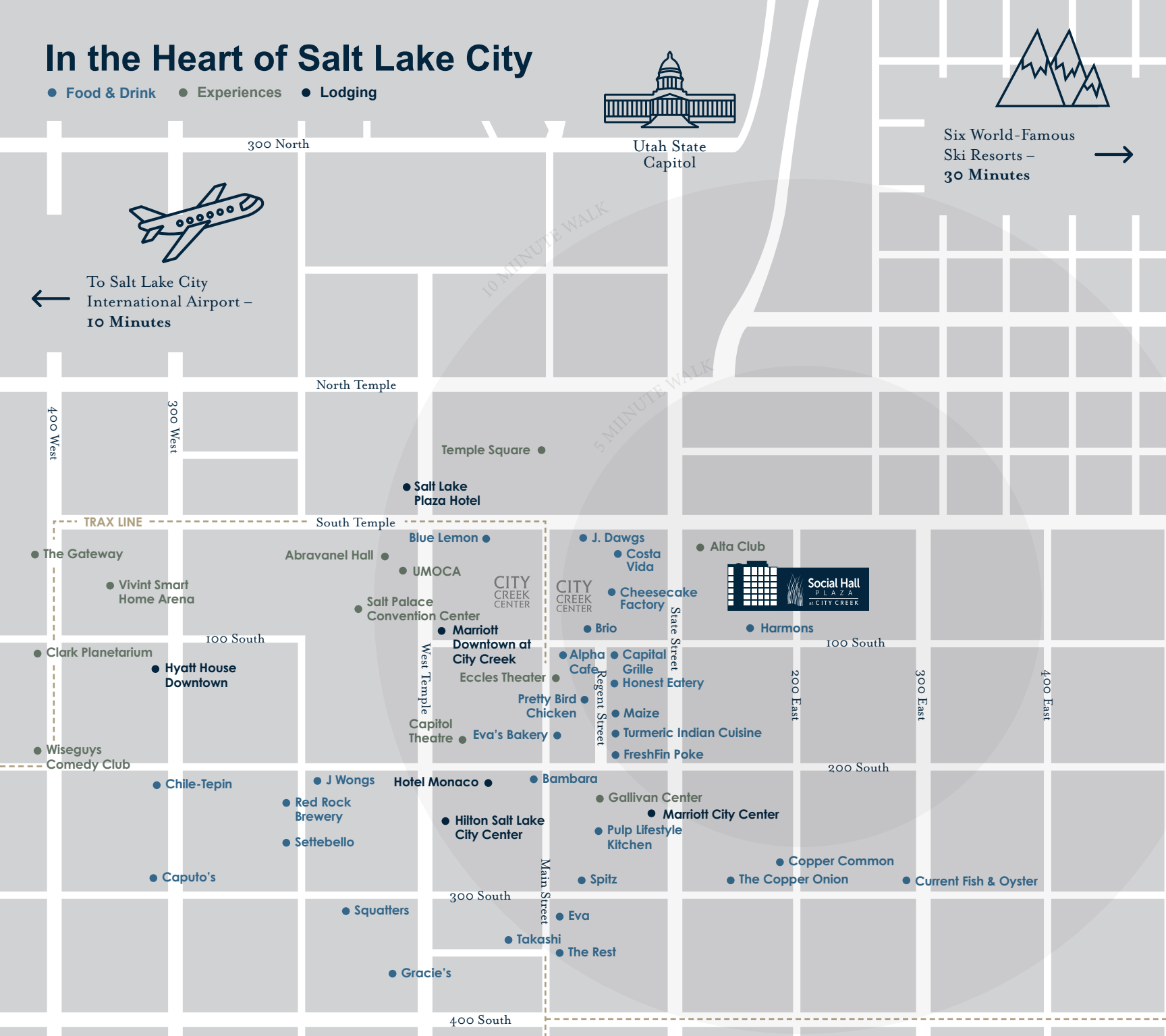
# In the Heart of Salt Lake City

● Food & Drink ● Experiences ● Lodging



Six World-Famous  
Ski Resorts –  
30 Minutes →

← To Salt Lake City  
International Airport –  
10 Minutes



## Contact

Jordan Johnson 801.321.8711

[Jordan.Johnson@propertyreserve.org](mailto:Jordan.Johnson@propertyreserve.org)



PROPERTY  
RESERVE