



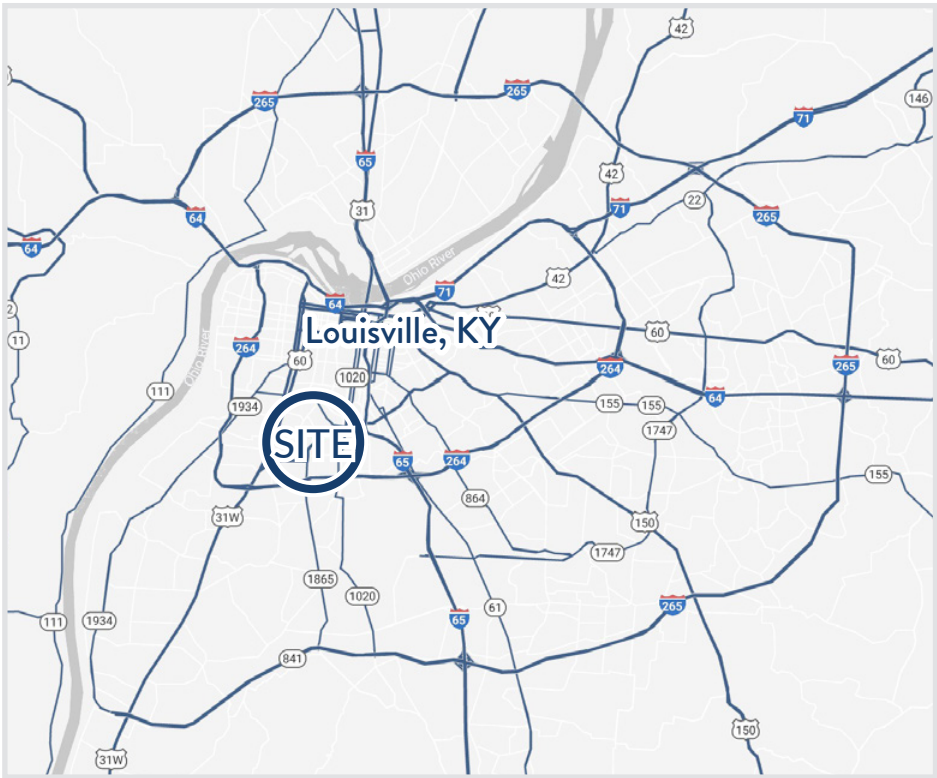
FOR SALE

3820 TAYLOR BLVD
LOUISVILLE, KY

HOGAN
REAL ESTATE

PROPERTY DESCRIPTION

3820 TAYLOR BLVD
LOUISVILLE, KY



Features

- + Former KFC restaurant with drive-thru window
- + Located next to Churchill Downs, home of the Kentucky Derby which has an attendance of over 150,000 people
- + Excellent visibility from Taylor Blvd and Earl Ave
- + Commercial zoning
- + Immediate area retailers include Family Dollar, Ace Hardware, and Dollar General Market
- + Less than 2 miles from University of Louisville and the Kentucky Exposition Center and under 5 miles from the Louisville International Airport



2,640 ± SF
ON 0.54 ACRE LOT
Available for Sale

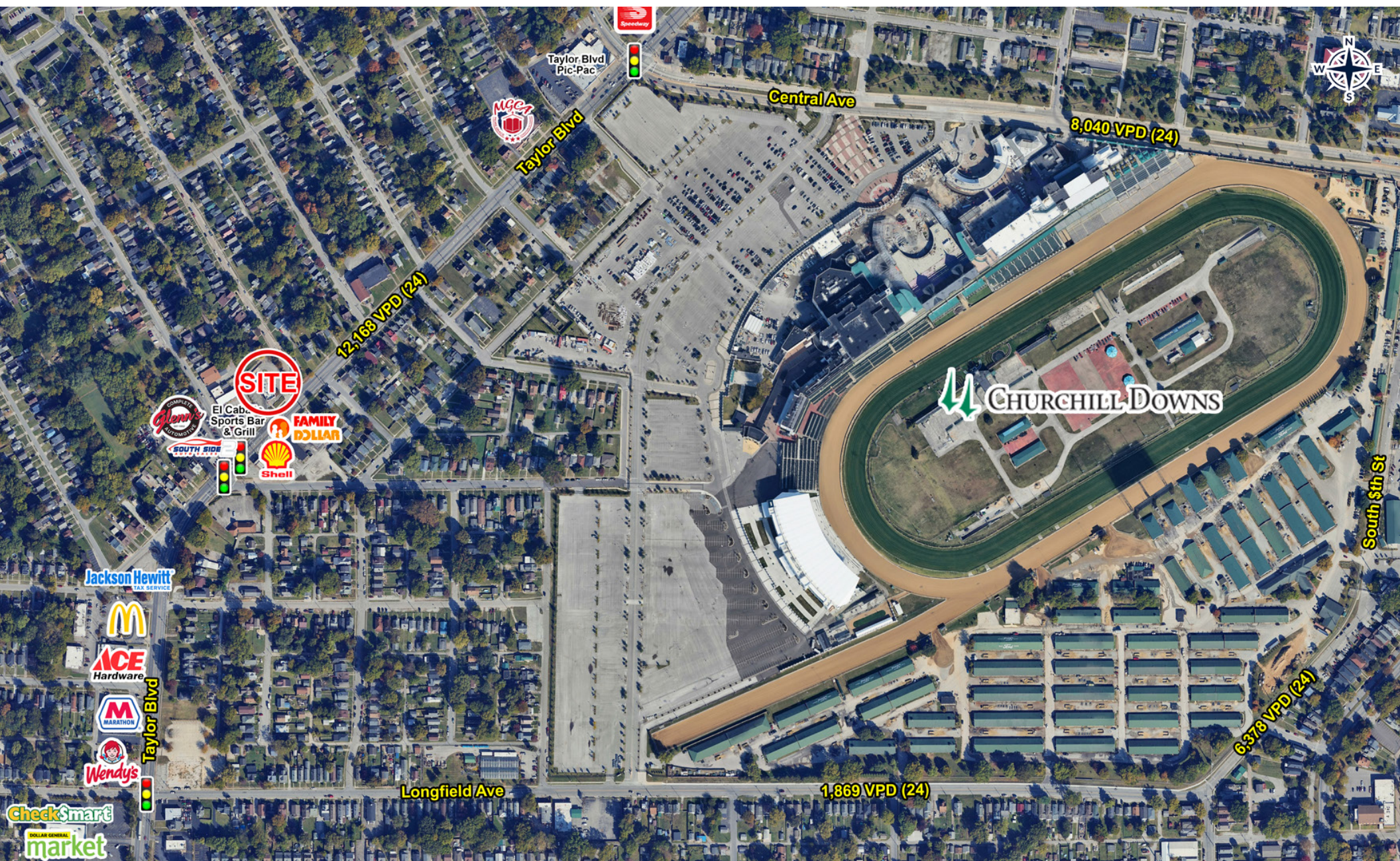
Demographics

	1 Mile	3 Miles	5 Miles
Population	17,813	116,569	248,591
Median Household Income	\$41,938	\$43,401	\$47,993



TRADE AREA AERIAL

3820 TAYLOR BLVD
LOUISVILLE, KY



IMMEDIATE AREA AERIAL

3820 TAYLOR BLVD
LOUISVILLE, KY



HOGAN

REAL ESTATE

PROPERTY CONTACTS

JIM CONKLIN

D: 502.271.5815

C: 812.972.3259

M: 502.426.1050

F: 502.426.1223

jconklin@hogandev.com

LAWRENCE BISIG

D: 502.271.5830

C: 502.593.8816

M: 502.426.1050

F: 502.426.1223

lbisig@hogandev.com

IN COOPERATION WITH



GORDON BROTHERS

101 Huntington Avenue / Suite 1100 / Boston, MA 02199

M:631.897.6782