

For Lease

Approx. 2,800 Sq. Ft. Retail Space

8 S. LaGrange Road, LaGrange, IL



- Vibrant downtown LaGrange location
- Many potential uses
- Basement
- Lease Rate: \$33.00 psf

- 1/2 block to Metra Station
- Central Business District
- Great exposure
- 11' ceiling height

Demographics

	<u>1 mile</u>	<u>3 miles</u>	<u>5 miles</u>
2024 Households	8,088	41,337	111,938
2024 Population	22,589	111,239	308,102
Avg. HH Income	\$143,689	\$133,233	\$115,090
2025 Vehicles Per Day: 21,782			



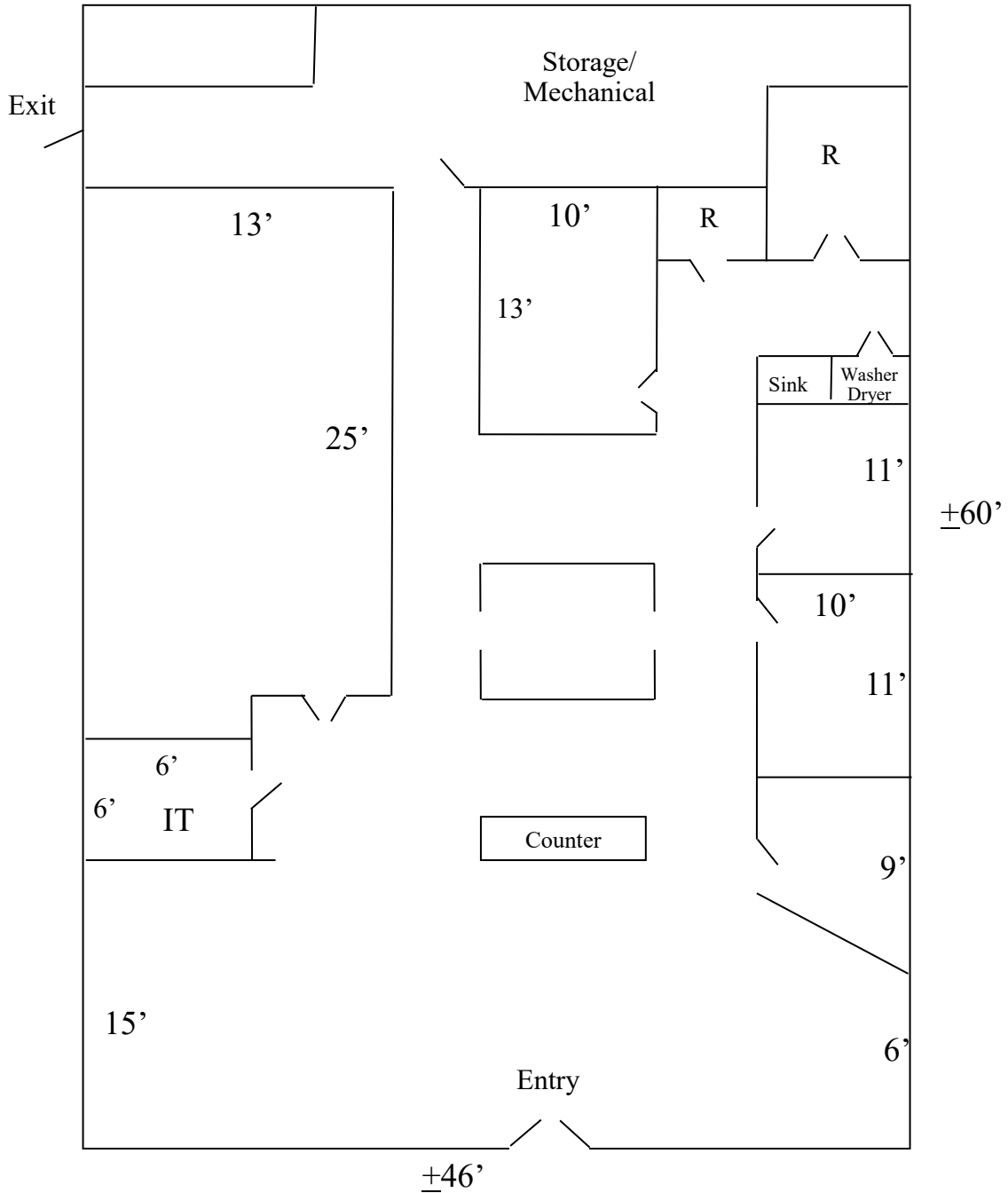
Exclusively Offered by:
Daniel Chopp
 (708) 387-2640
dan@choppcommercial.com

All information herein is from sources deemed reliable but not guaranteed accurate.
 Subject to errors, omissions, and to change of price and terms, prior sale or lease, all without notice.

Floor Plan

8 S. LaGrange Road, LaGrange, IL

NOTE: DRAWING NOT TO SCALE.



Exclusively Offered by:
Daniel Chopp
(708) 387-2640
dan@choppcommercial.com

All information herein is from sources deemed reliable but not guaranteed accurate.
Subject to errors, omissions, and to change of price and terms, prior sale or lease, all without notice.

Interior Photos

8 S. LaGrange Road, LaGrange, IL



Exclusively Offered by:
Daniel Chopp
(708) 387-2640
dan@choppcommercial.com

All information herein is from sources deemed reliable but not guaranteed accurate.
Subject to errors, omissions, and to change of price and terms, prior sale or lease, all without notice.

Interior Photos

8 S. LaGrange Road, LaGrange, IL



Exclusively Offered by:
Daniel Chopp
(708) 387-2640
dan@choppcommercial.com

All information herein is from sources deemed reliable but not guaranteed accurate.
Subject to errors, omissions, and to change of price and terms, prior sale or lease, all without notice.