

1300

CORNWALL ROAD

OAKVILLE, ON



Office Space Available from 2,900 to 15,000 SF

FOR FURTHER INFORMATION, PLEASE CONTACT:

Gary L. Williamson*

Senior Vice President
+1 416 495 6247
gary.williamson@cbre.com

Craig Williamson, MBA**

Senior Vice President
+1 416 495 6267
craig.williamson@cbre.com

**CBRE Limited,
Real Estate Brokerage**
2005 Sheppard Ave E
Suite 800
Toronto, ON M2J 5B4
www.cbre.ca

*Sales Representative **Broker

CBRE

Property Details

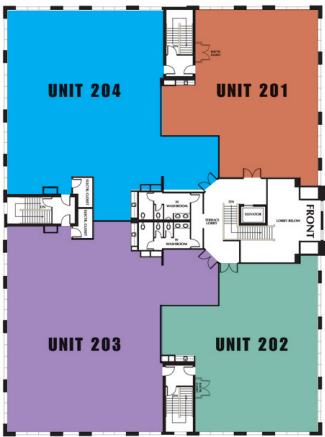
AVAILABLE AREA	Suite 201:	2,958 sq. ft.
	Suite 202:	2,957 sq. ft.
	Suite 203:	4,458 sq. ft.
	Suite 204:	4,719 sq. ft.
	Suite 201 & 204:	7,416 sq. ft.
	Suite 202 & 203:	7,676 sq. ft.
	Suite 203 & 204:	9,177 sq. ft.
	Suite 202, 203, 204:	12,134 sq. ft.
Suite 201, 203, 204:	12,135 sq. ft.	
Suite 201, 202, 203, 204:	15,092 sq. ft.	

RENTAL RATE \$18.50 per sq. ft. per annum for year 1

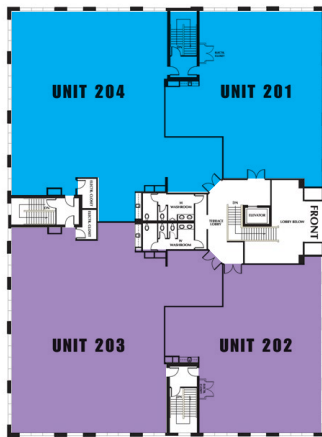
ADDITIONAL RENT \$13.15 per sq. ft. (2025 estimate)
 Insuite hydro and janitorial separate

- COMMENTS**
- + Easy access to 400 series highways, amenities and GO Transit
 - + 25 minutes from Toronto Pearson International Airport
 - + Situated between Trafalgar Road & Ford Drive just south of QEW
 - + Surface parking available
 - + Landlord to deliver premises on a turnkey basis

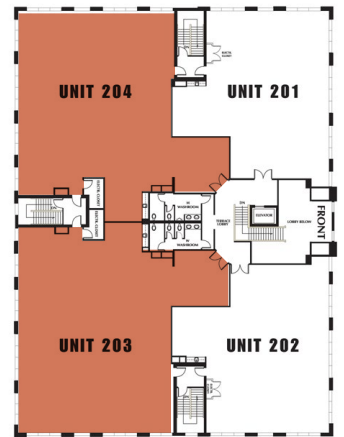
Floor Plan



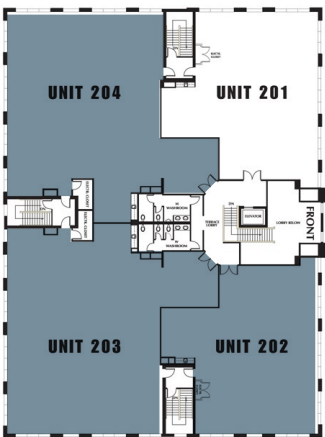
■ Suite 201 ■ Suite 203
■ Suite 202 ■ Suite 204



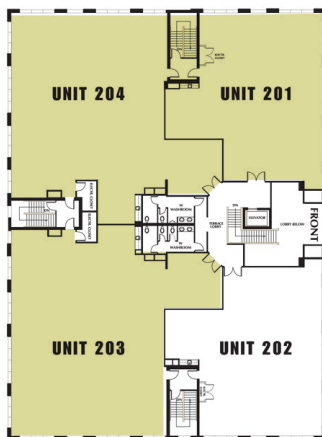
■ Suite 201 & 204
■ Suite 202 & 203



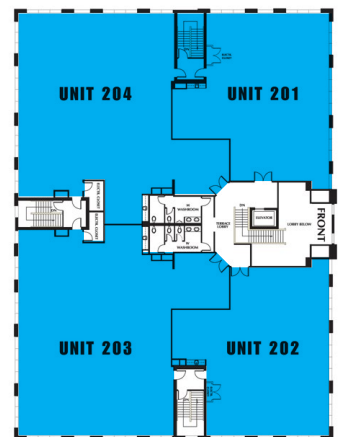
■ Suite 203 & 204



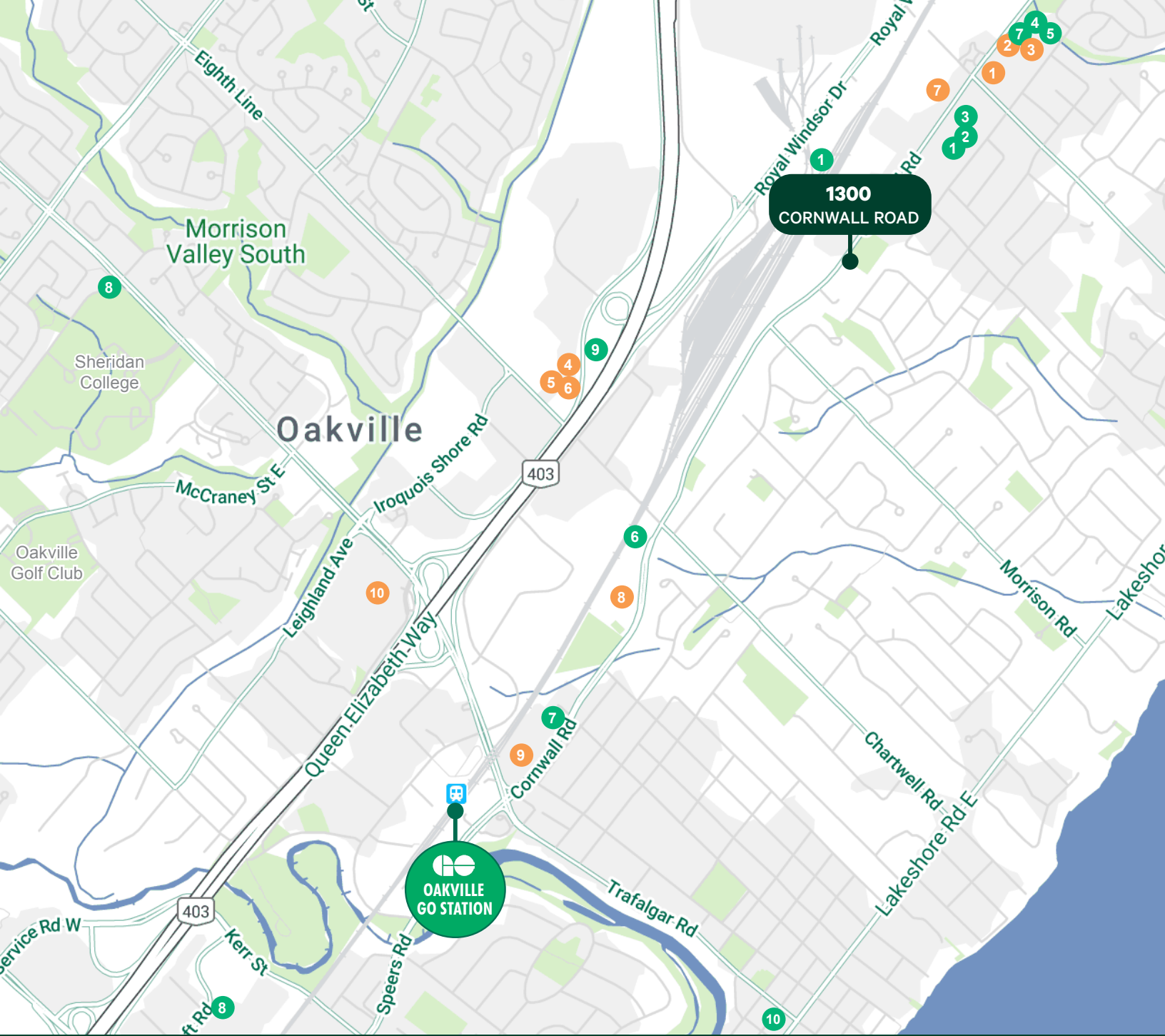
■ Suite 202, 203, 204



■ Suite 201, 203, 204



■ Suite 201, 202, 203, 204



RESTAURANTS

- | | |
|-----------------------------------|------------------------------|
| 1 Freshii | 6 Danish Pastry House |
| 2 English Bay Fish & Chips | 7 Sunlight Grill |
| 3 Shawarma Rama | 8 Tim Horton's |
| 4 Caledon House | 9 Harvey's |
| 5 Pita Nutso | 10 Starbucks |



RETAIL

- | | |
|------------------------------------|--|
| 1 Rexall | 6 Fido |
| 2 Sobey's Maple Grove | 7 Cornwall Pharmacy |
| 3 Maple Grove Home Hardware | 8 Longo's |
| 4 The Source | 9 Whole Foods Market |
| 5 Rogers | 10 Oakville Place Shopping Mall |

All Outlines Are Approximate

This disclaimer shall apply to CBRE Limited, Real Estate Brokerage, and to all other divisions of the Corporation; to include all employees and independent contractors ("CBRE"). The information set out herein, including, without limitation, any projections, images, opinions, assumptions and estimates obtained from third parties (the "Information") has not been verified by CBRE, and CBRE does not represent, warrant or guarantee the accuracy, correctness and completeness of the Information. CBRE does not accept or assume any responsibility or liability, direct or consequential, for the Information or the recipient's reliance upon the Information. The recipient of the Information should take such steps as the recipient may deem necessary to verify the Information prior to placing any reliance upon the Information. The Information may change and any property described in the Information may be withdrawn from the market at any time without notice or obligation to the recipient from CBRE. CBRE and the CBRE logo are the service marks of CBRE Limited and/or its affiliated or related companies in other countries. All other marks displayed on this document are the property of their respective owners. All Rights Reserved. Mapping Sources: Canadian Mapping Services canadamapping@cbre.com; MapPoint, DMTI Spatial, Environments Analytics, Microsoft Bing, Google Earth

