

Black's Ridge

16253 Swingley Ridge Rd, Chesterfield, MO 63017



1,250 SF - 14,706 SF OFFICE FOR LEASE

- Suites Available:

Suite 202* - 4,072 SF

Suite 208* - 1,250 SF

Suite 215 - 3,235 SF

Suite 375 - 4,010 SF

Suite 400B** - 11,324 SF

Suite 400C** - 3,382 SF

**Can be combined for a total of 5,322 SF*

***Can be combined for a total of 14,706 SF*

- Class A, 4-Story, Brick & Glass Office Building
- 4/1,000 SF Garage & Surface Parking
- Local Ownership
- Lease Rate: \$24.00 PSF, Full Service



FOR MORE INFORMATION CONTACT:

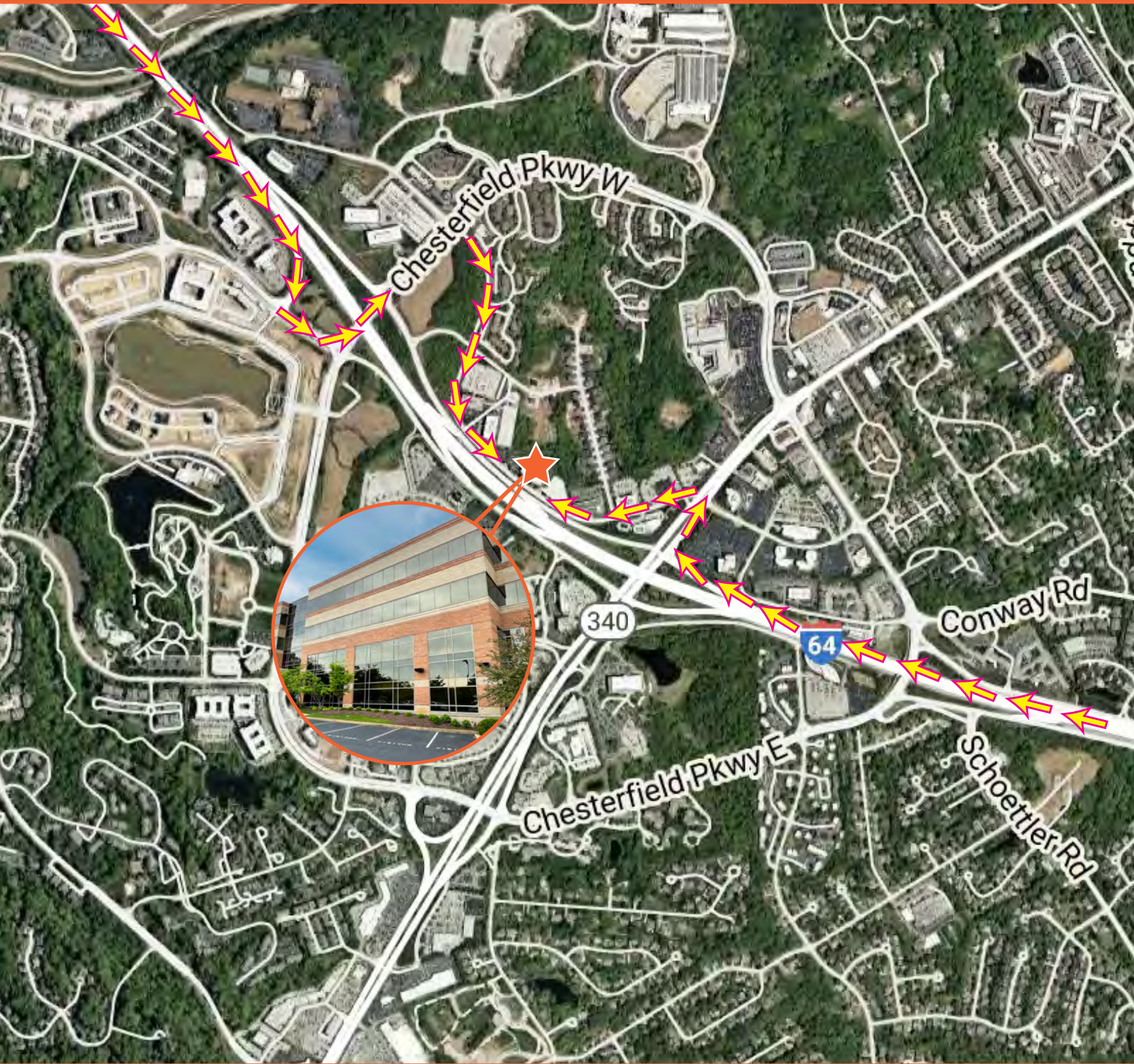
Andy Bagy | (314) 746-1467

abagy@gershmancre.com





Black's Ridge



FOR MORE INFORMATION CONTACT:

Andy Bagy | (314) 746-1467
abagy@gershmancre.com



Gershman
Commercial Real Estate

The information contained herein is not warranted, although it has been obtained from the owner of the property or from other sources we deem reliable. It is subject to change without notice. Owner and broker make no representation as to the environmental condition of the property and recommend purchaser's/tenant's independent investigation.



16253 Swingley Ridge Rd

Chesterfield, MO 63017



2ND FLOOR: 8,557 SF

Suite 202*: 4,072 SF

Suite 208*: 1,250 SF

Suite 215: 3,235 SF

**Can be combined for a total of 5,322 SF*



Leased & Managed By:



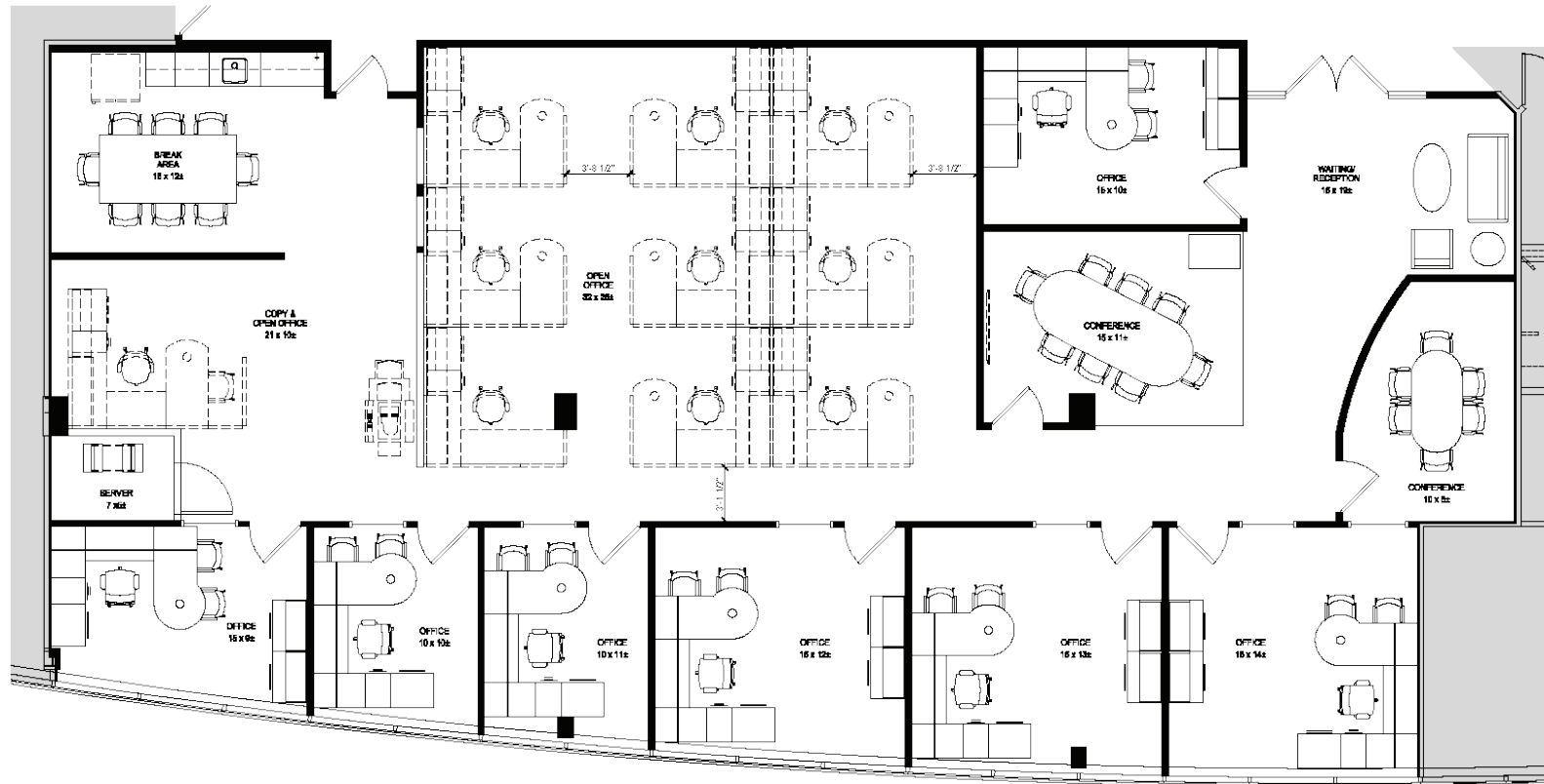


16253 Swingley Ridge Rd

Chesterfield, MO 63017



SUITE 375: 4,010 SF
(Available May 2027)



Leased & Managed By:





16253 Swingley Ridge Rd

Chesterfield, MO 63017

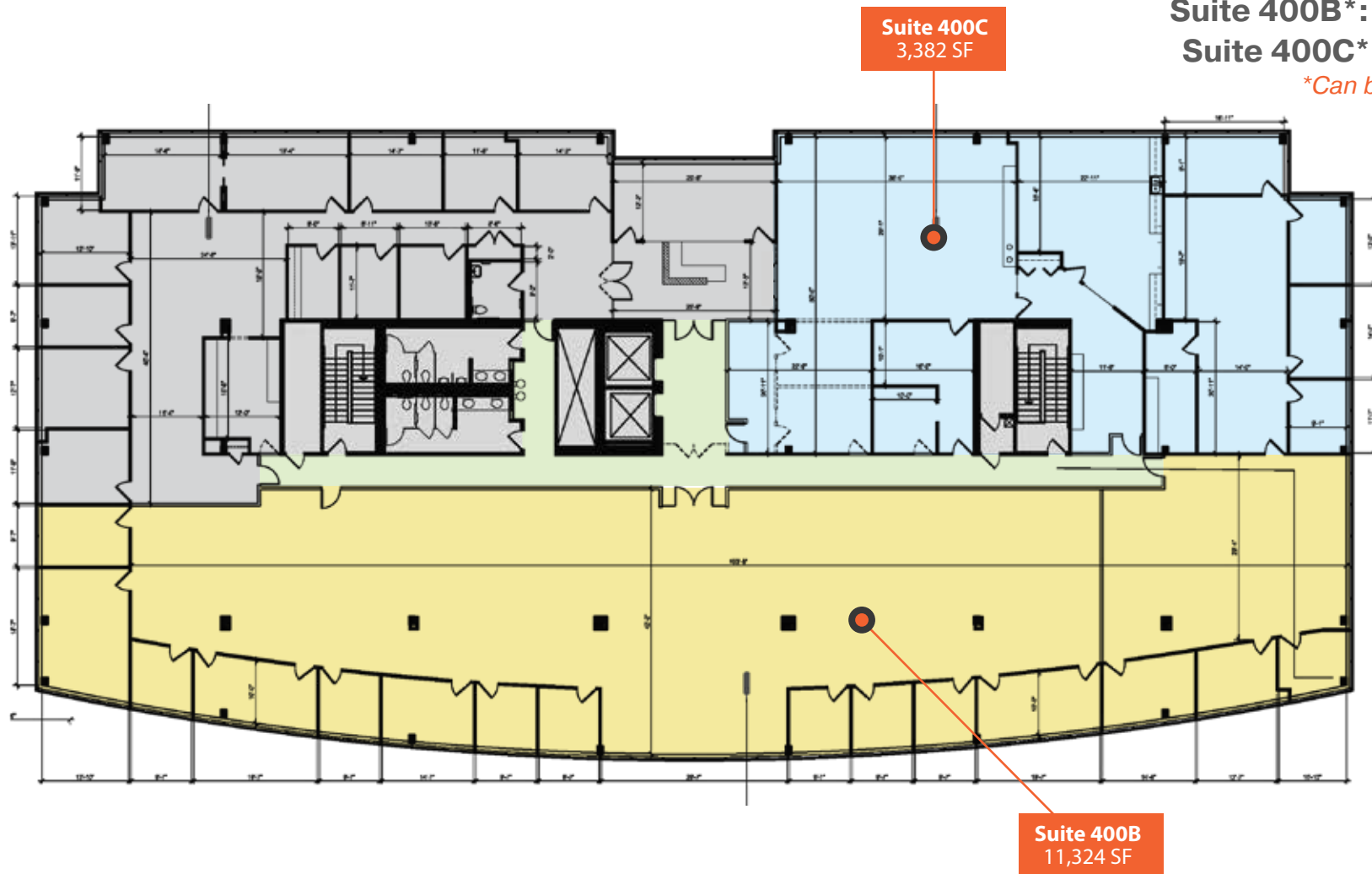


4TH FLOOR: 14,706 SF

Suite 400B*: 11,324 SF

Suite 400C*: 3,382 SF

**Can be combined*



Leased & Managed By:



Gershman
Commercial Real Estate