

3703 BERGENLINE AVENUE

Union City, NJ

5,412 SF FORMER URGENT CARE AVAILABLE / FOR LEASE



Blake Shanaphy / blake.shanaphy@cushwake.com / +1 201 424 3506

Meagan Bonan / meagan.bonan@cushwake.com / +1 917 596 5800



©2024 Cushman & Wakefield. All rights reserved. The information contained in this communication is strictly confidential. This information has been obtained from sources believed to be reliable but has not been verified. NO WARRANTY OR REPRESENTATION, EXPRESS OR IMPLIED, IS MADE AS TO THE CONDITION OF THE PROPERTY (OR PROPERTIES) REFERENCED HEREIN OR AS TO THE ACCURACY OR COMPLETENESS OF THE INFORMATION CONTAINED HEREIN, AND SAME IS SUBMITTED SUBJECT TO ERRORS, OMISSIONS, CHANGE OF PRICE, RENTAL OR OTHER CONDITIONS, WITHDRAWAL WITHOUT NOTICE, AND TO ANY SPECIAL LISTING CONDITIONS IMPOSED BY THE PROPERTY OWNER(S). ANY PROJECTIONS, OPINIONS OR ESTIMATES ARE SUBJECT TO UNCERTAINTY AND DO NOT SIGNIFY CURRENT OR FUTURE PROPERTY PERFORMANCE.

[CUSHMANWAKEFIELD.COM](https://www.cushmanwakefield.com)

3703 BERGENLINE AVENUE

Union City, NJ

PREMISES

West Block between 37th Street and 38th Street

SIZE

± 5,412 SF

FRONTAGE

+/- 25 Feet

LEASE TYPE

Sublease
LXD 9/30/2034

POSSESSION

Immediate

ASKING RENT

Upon Request

NEIGHBORS

Hudson Spa, JD Sports, ABC Superstores, Foot Locker, Rainbow, Metro by T-Mobile, H&R Block, PNC Bank & More

COMMENTS

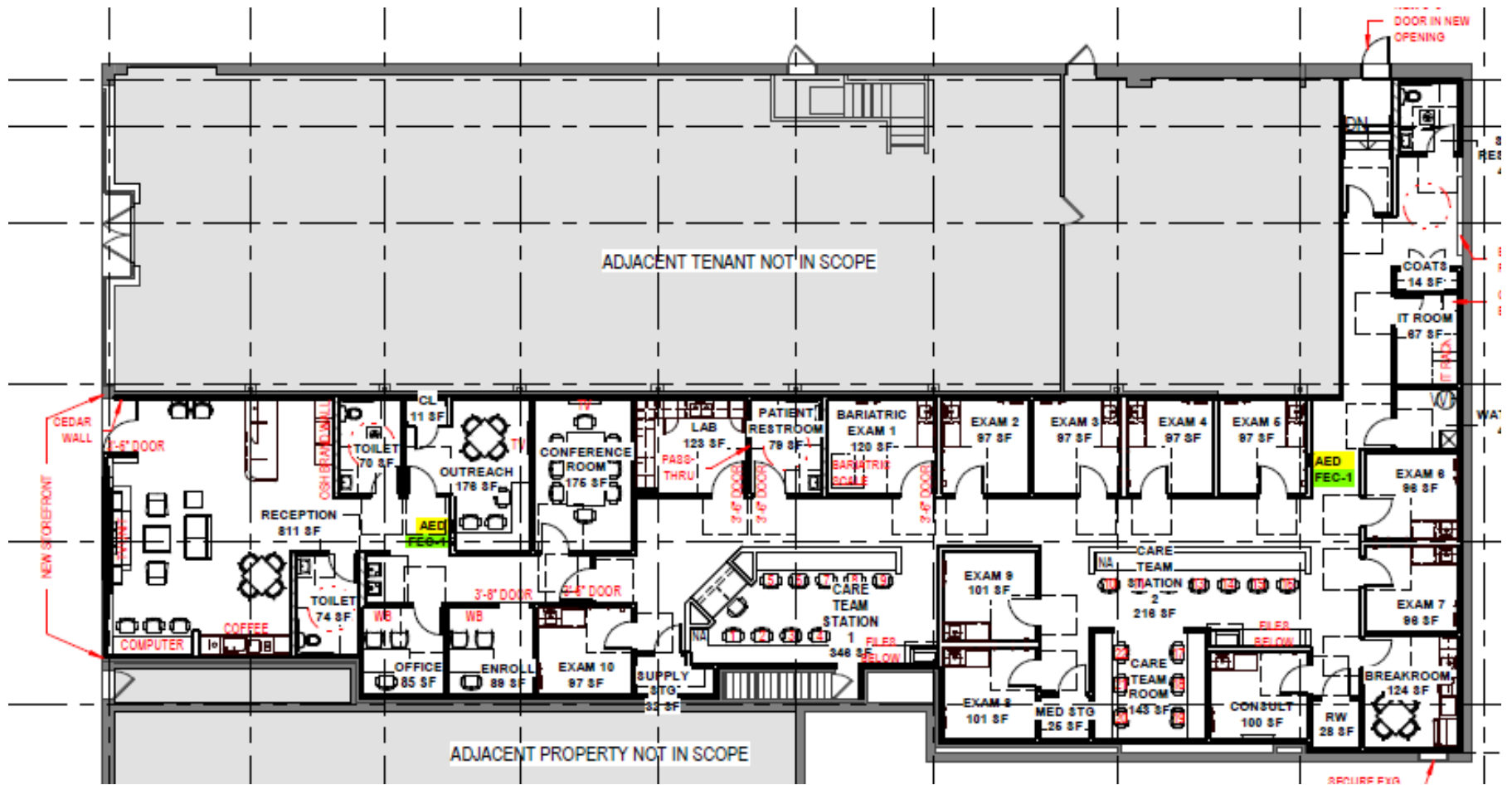
- Located on main retail corridor in busy downtown CBD
- Strong mix of co-tenancy, national, regional, plus local mom & pop retailers
- Newly buildout urgent care facility, which includes a new reception area, a dozen exam rooms, storage, conference rooms, kitchen
- Ideal users include Medical, Retail, Financial, Daily Needs, Personal Services



3703 BERGENLINE AVENUE

Union City, NJ

FLOOR PLAN



3703 BERGENLINE AVENUE

Union City, NJ

For Leasing Inquiries, please contact:

For Leasing Inquiries, please contact:

Blake Shanaphy / blake.shanaphy@cushwake.com / +1 201 424 3506

Meagan Bonan / meagan.bonan@cushwake.com / +1 917 698 5800

cushmanwakefield.com



©2022 Cushman & Wakefield. All rights reserved. The information contained in this communication is strictly confidential. This information has been obtained from sources believed to be reliable but has not been verified. NO WARRANTY OR REPRESENTATION, EXPRESS OR IMPLIED, IS MADE AS TO THE CONDITION OF THE PROPERTY (OR PROPERTIES) REFERENCED HEREIN OR AS TO THE ACCURACY OR COMPLETENESS OF THE INFORMATION CONTAINED HEREIN, AND SAME IS SUBMITTED SUBJECT TO ERRORS, OMISSIONS, CHANGE OF PRICE, RENTAL OR OTHER CONDITIONS, WITHDRAWAL WITHOUT NOTICE, AND TO ANY SPECIAL LISTING CONDITIONS IMPOSED BY THE PROPERTY OWNER(S). ANY PROJECTIONS, OPINIONS OR ESTIMATES ARE SUBJECT TO UNCERTAINTY AND DO NOT SIGNIFY CURRENT OR FUTURE PROPERTY PERFORMANCE.