

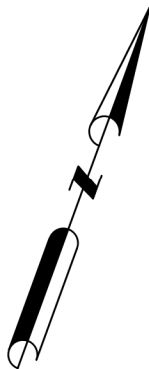
REPUBLIC TRAILS BLVD.

CURVE TABLE

CURVE	RADIUS	DELTA ANGLE	ARC LENGTH	CHORD BEARING	CHORD LENGTH
C1	17295.74'	2°00'06"	604.26'	S21°07'22"E	604.22'

LINE TABLE

LINE	BEARING	DISTANCE
L1	N69°50'35"E	98.50'
L2	N77°27'39"E	151.34'
L3	N69°50'04"E	151.57'
L4	S20°06'24"E	78.74'
L5	N70°10'57"E	19.85'
L6	S71°33'26"W	124.20'
L7	S70°04'16"W	183.84'
L8	S70°41'36"W	122.16'



BEARING BASIS:

TEXAS COORDINATE SYSTEM, NAD83(2011),
CENTRAL ZONE, UTILIZING THE LEICA
SMARTNET CONTINUALLY OPERATING
REFERENCE NETWORK.

LEGEND

- IRON ROD FOUND
- GCE GENERAL COMMON ELEMENT

SURVEYOR'S CERTIFICATION

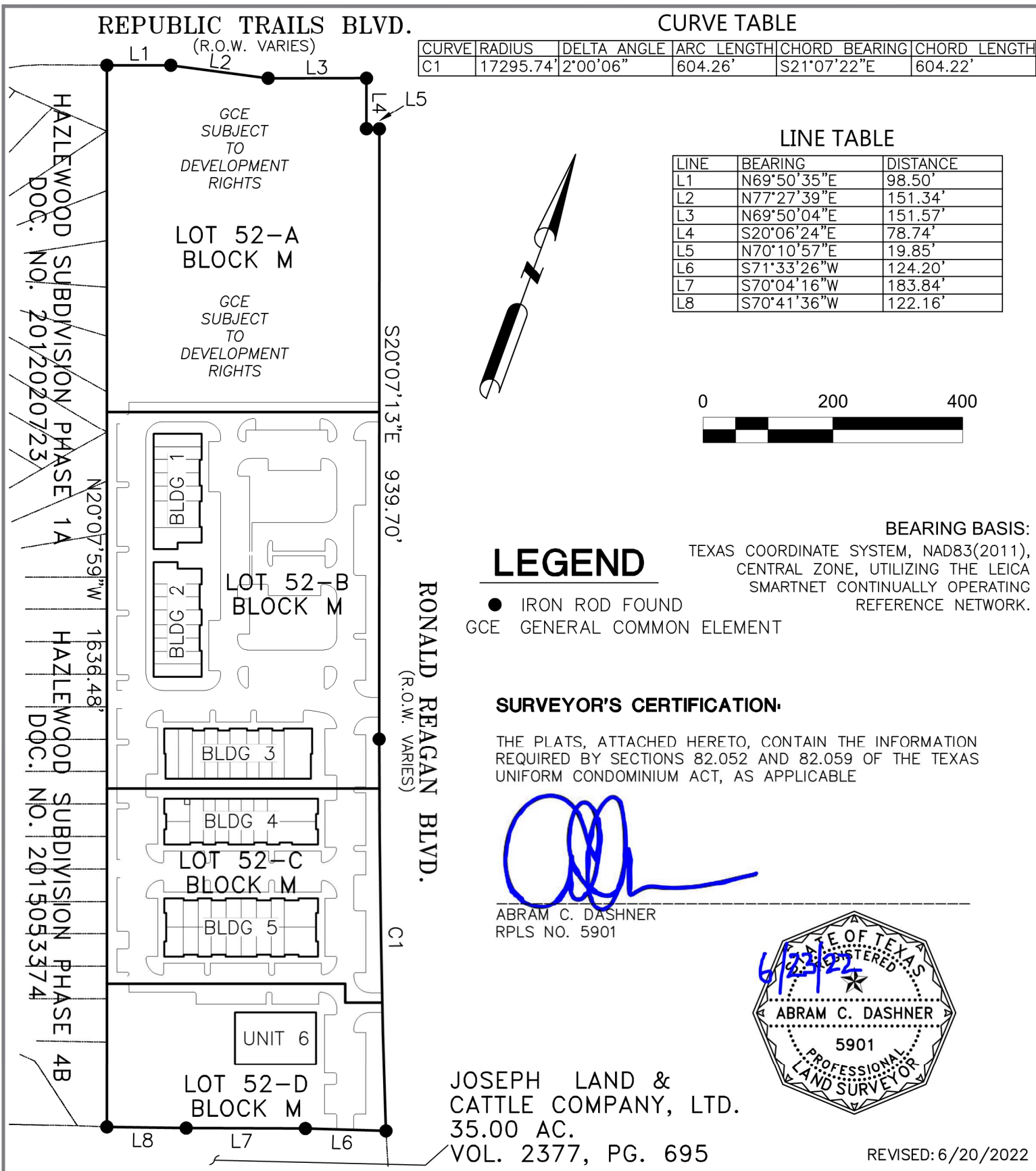
THE PLATS, ATTACHED HERETO, CONTAIN THE INFORMATION
REQUIRED BY SECTIONS 82.052 AND 82.059 OF THE TEXAS
UNIFORM CONDOMINIUM ACT, AS APPLICABLE

ABRAM C. DASHNER
RPLS NO. 5901



JOSEPH LAND &
CATTLE COMPANY, LTD.
35.00 AC.
VOL. 2377, PG. 695

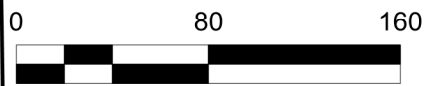
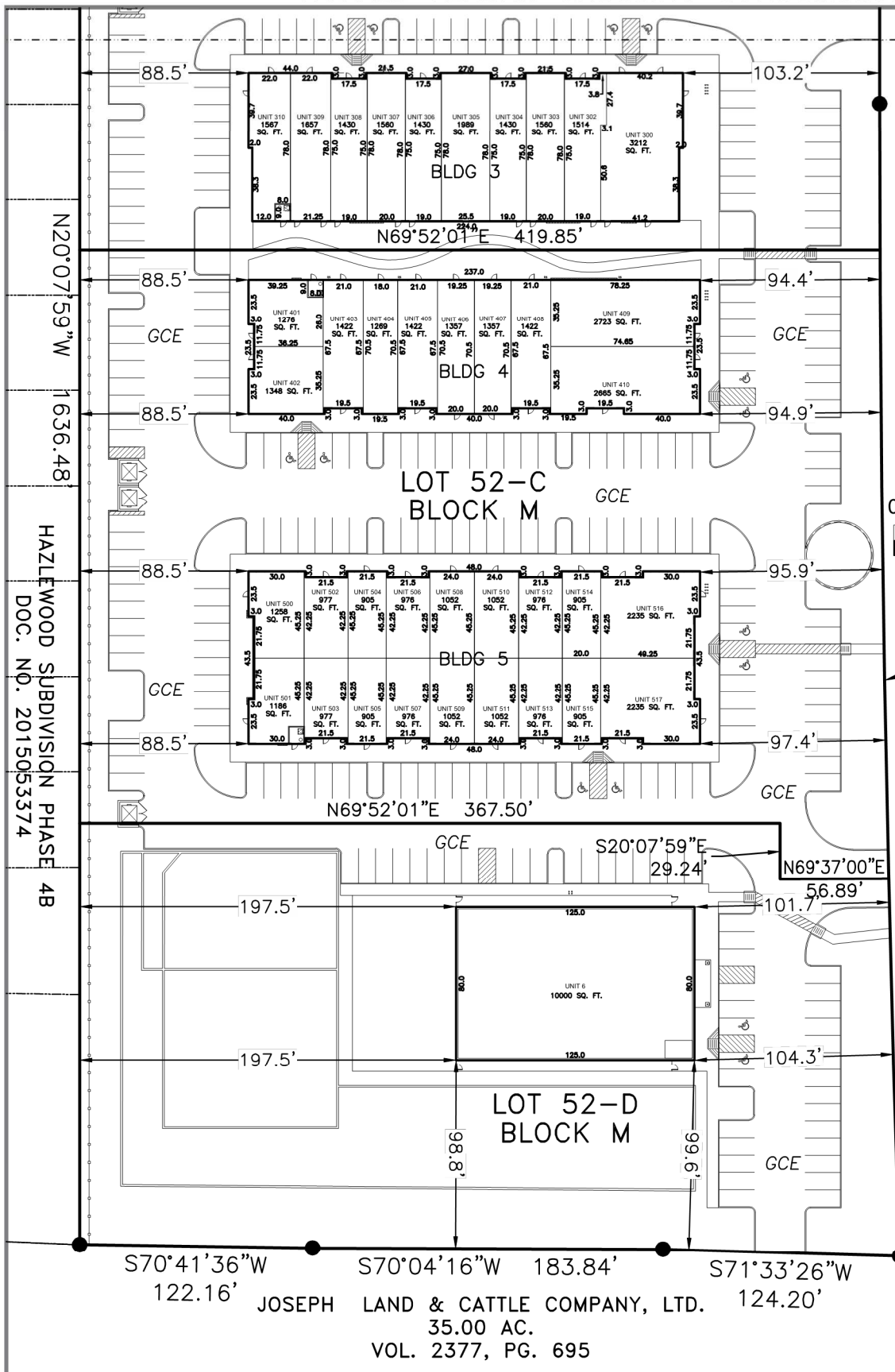
REVISED: 6/20/2022



CHECKED BY: AD		HAZELWOOD, PHASE 6, LOT 52-A, LOT 52-B, LOT 52-C, & LOT 52-D, BLOCK M	ABRAM DASHNER RPLS, LLC
JOB NUMBER: 174-05	ISSUE DATE: 05/18/2022		
SHEET: 1 OF 10		CONDO PLAT	abe@rpls5901.com 512-244-3395 TBPLS FIRM NO. 10194420

RONALD REAGAN CROSSING CONDOMINIUMS

MATCH LINE SHEET 3
MATCH LINE SHEET 2



R=17295.74'
Δ=2°00'06"
A=604.26'
CB=S21°07'22"E
C=604.22'

RONALD REAGAN BLVD.
(R.O.W. VARIES)

LEGEND

- IRON ROD FOUND
- GCE GENERAL COMMON ELEMENT

REVISED: 6/20/2022

S70°41'36"W 122.16' JOSEPH LAND & CATTLE COMPANY, LTD. 35.00 AC. VOL. 2377, PG. 695
S70°04'16"W 183.84'
S71°33'26"W 124.20'

CHECKED BY: AD	
JOB NUMBER: 174-05	ISSUE DATE: 05/18/2022
SHEET: 2 OF 10	

HAZLEWOOD, PHASE 6, LOT 52-A, LOT 52-B,
LOT 52-C, & LOT 52-D, BLOCK M

CONDO PLAT

ABRAM DASHNER
RPLS, LLC

abe@rpls5901.com
512-244-3395
TBPLS FIRM NO. 10194420

RONALD REAGAN CROSSING CONDOMINIUMS

LOT 52-A
BLOCK M

GCE SUBJECT TO DEVELOPMENT RIGHTS

BLVD.

MATCH LINE SHEET 4
MATCH LINE SHEET 3

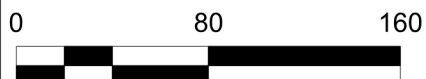
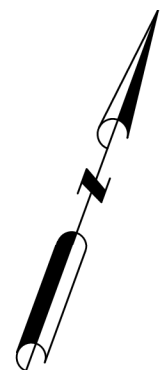
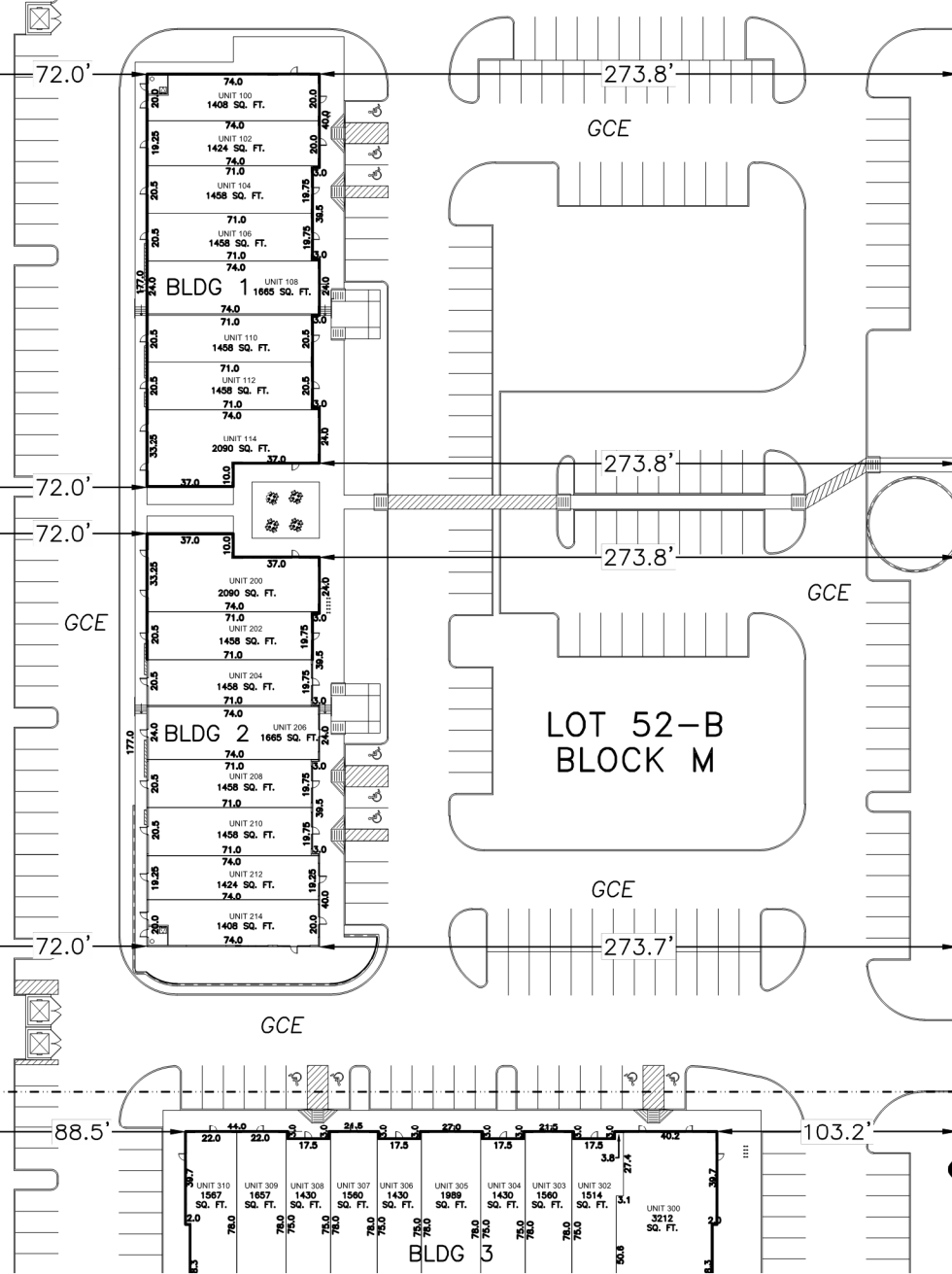
HAZLEWOOD SUBDIVISION PHASE 1A
DOC. NO 2012020723

N69°52'01"E 419.80'

S20°07'13"E 939.70'

RONALD REAGAN BLVD.
(R.O.W. VARIES)

N20°07'59"W 1636.48'



LEGEND

- IRON ROD FOUND
- GCE GENERAL COMMON ELEMENT

MATCH LINE SHEET 3
MATCH LINE SHEET 2

REVISED: 6/20/2022

CHECKED BY:

AD

JOB NUMBER:

ISSUE DATE:

174-05

05/18/2022

HAZLEWOOD, PHASE 6, LOT 52-A, LOT 52-B,
LOT 52-C, & LOT 52-D, BLOCK M

ABRAM DASHNER
RPLS, LLC

SHEET:

3 OF 10

CONDO PLAT

abe@rpls5901.com
512-244-3395
TBPLS FIRM NO. 10194420

RONALD REAGAN CROSSING CONDOMINIUMS

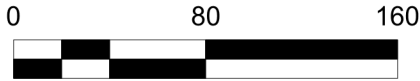
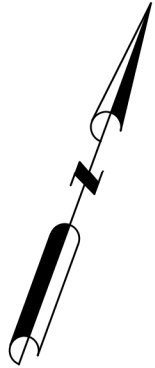
REPUBLIC TRAILS BLVD.
(R.O.W. VARIES)

N69°50'35"E
98.50'

N77°27'39"E 151.34' N69°50'04"E 151.57'

S20°06'24"E
78.74'

N70°10'57"E
19.85'



RONALD REAGAN BLVD.
(R.O.W. VARIES)

LOT 52-A
BLOCK M

GCE SUBJECT TO DEVELOPMENT RIGHTS

MATCH LINE SHEET 4
MATCH LINE SHEET 3

N69°52'01"E 419.80'

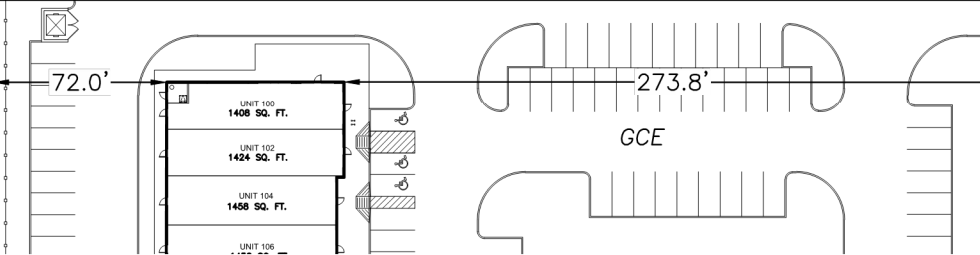
S20°07'13"E
939.70'

LEGEND

- IRON ROD FOUND
- GCE GENERAL COMMON ELEMENT

REVISED: 6/20/2022

HAZLEWOOD SUBDIVISION PHASE 1A
DOC. NO. 2012020723



CHECKED BY: AD	
JOB NUMBER: 174-05	ISSUE DATE: 05/18/2022
SHEET: 4 OF 10	

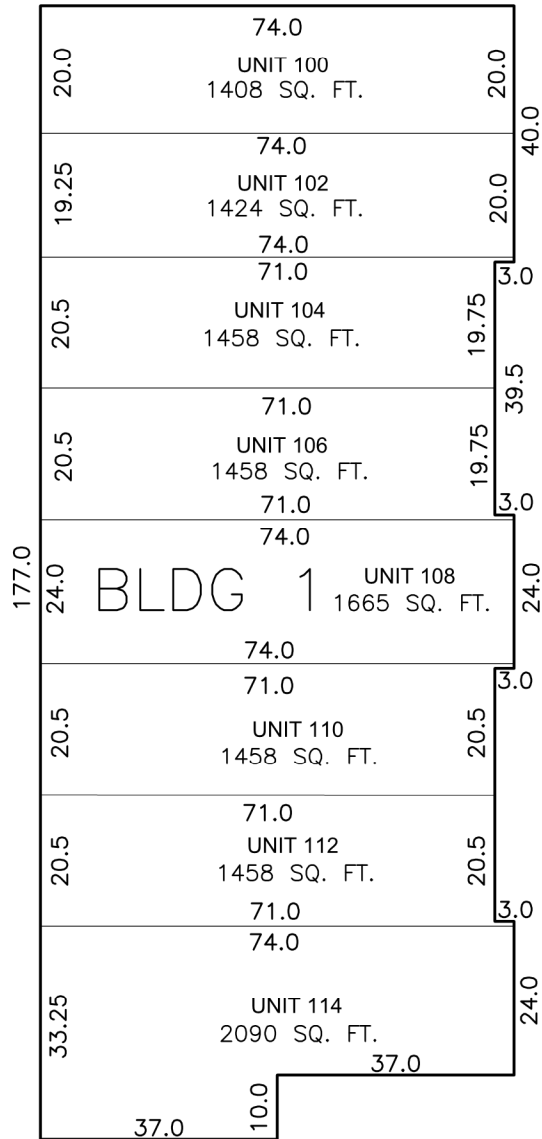
HAZELWOOD, PHASE 6, LOT 52-A, LOT 52-B,
LOT 52-C, & LOT 52-D, BLOCK M

CONDO PLAT

ABRAM DASHNER
RPLS, LLC

abe@rpls5901.com
512-244-3395
TBPLS FIRM NO. 10194420

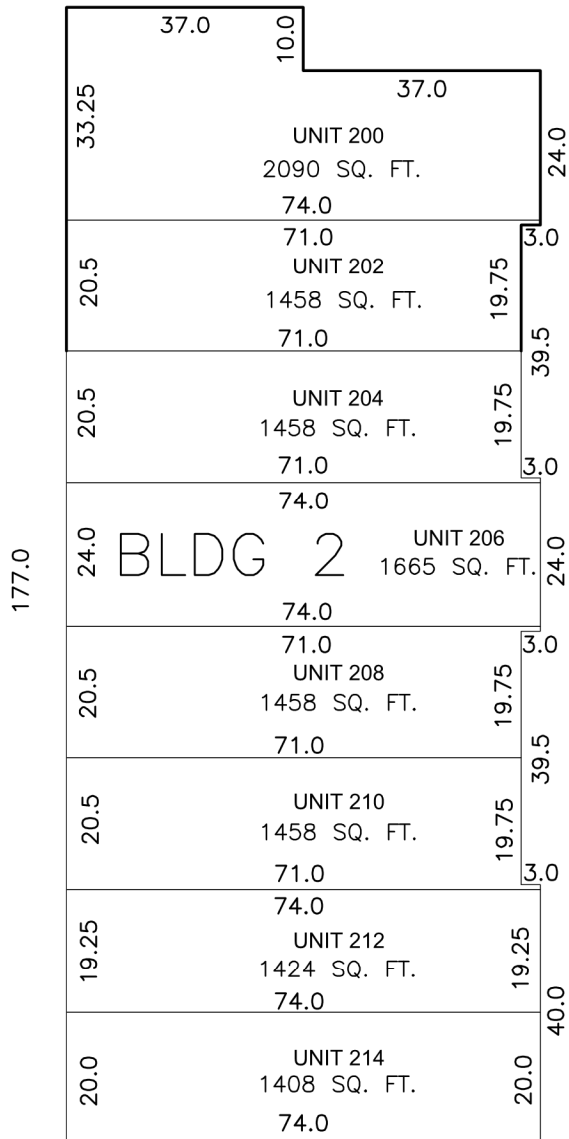
RONALD REAGAN CROSSING CONDOMINIUMS



REVISED: 6/20/2022

CHECKED BY: AD		HAZELWOOD, PHASE 6, LOT 52-A, LOT 52-B, LOT 52-C, & LOT 52-D, BLOCK M	ABRAM DASHNER RPLS, LLC
JOB NUMBER: 174-05	ISSUE DATE: 05/18/2022		
SHEET: 5 OF 10		CONDO PLAT	abe@rpls5901.com 512-244-3395 TBPLS FIRM NO. 10194420

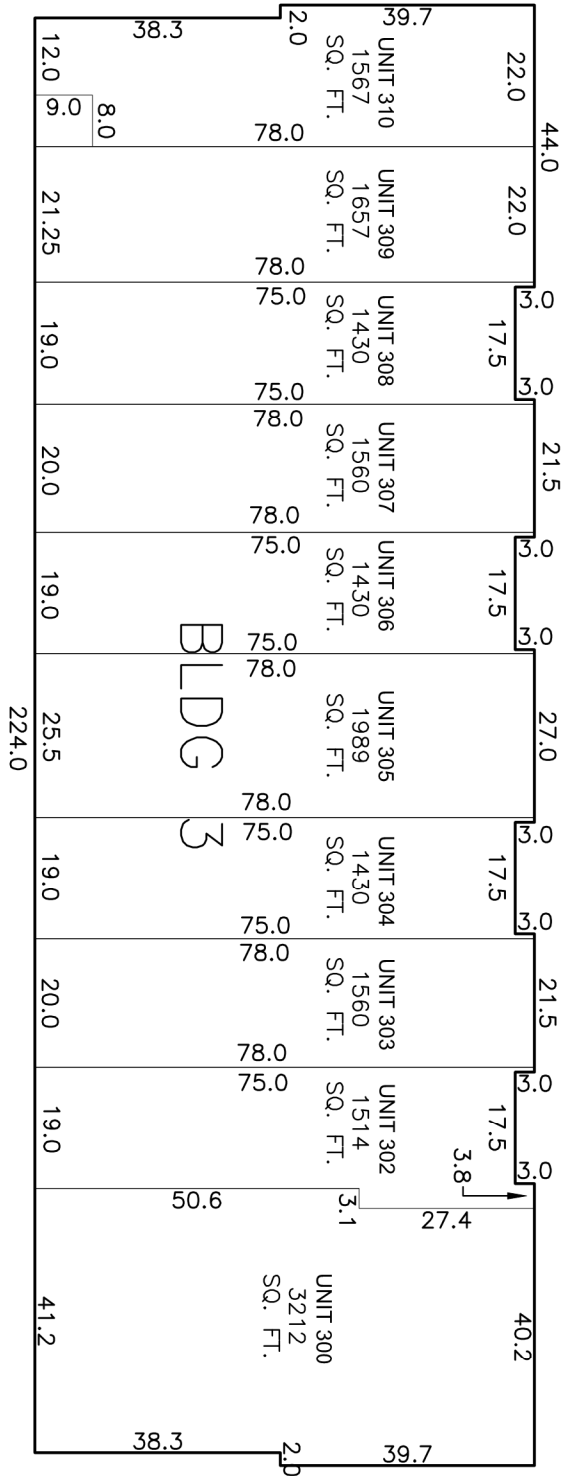
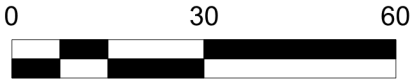
RONALD REAGAN CROSSING CONDOMINIUMS



REVISED: 6/20/2022

CHECKED BY: AD	HAZELWOOD, PHASE 6, LOT 52-A, LOT 52-B, LOT 52-C, & LOT 52-D, BLOCK M	ABRAM DASHNER RPLS, LLC	
JOB NUMBER: 174-05 ISSUE DATE: 05/18/2022			
SHEET: 6 OF 10	CONDO PLAT	abe@rpls5901.com 512-244-3395 TBPLS FIRM NO. 10194420	

RONALD REAGAN CROSSING CONDOMINIUMS



REVISED: 6/20/2022

CHECKED BY: AD	
JOB NUMBER: 174-05	ISSUE DATE: 05/18/2022
SHEET: 7 OF 10	

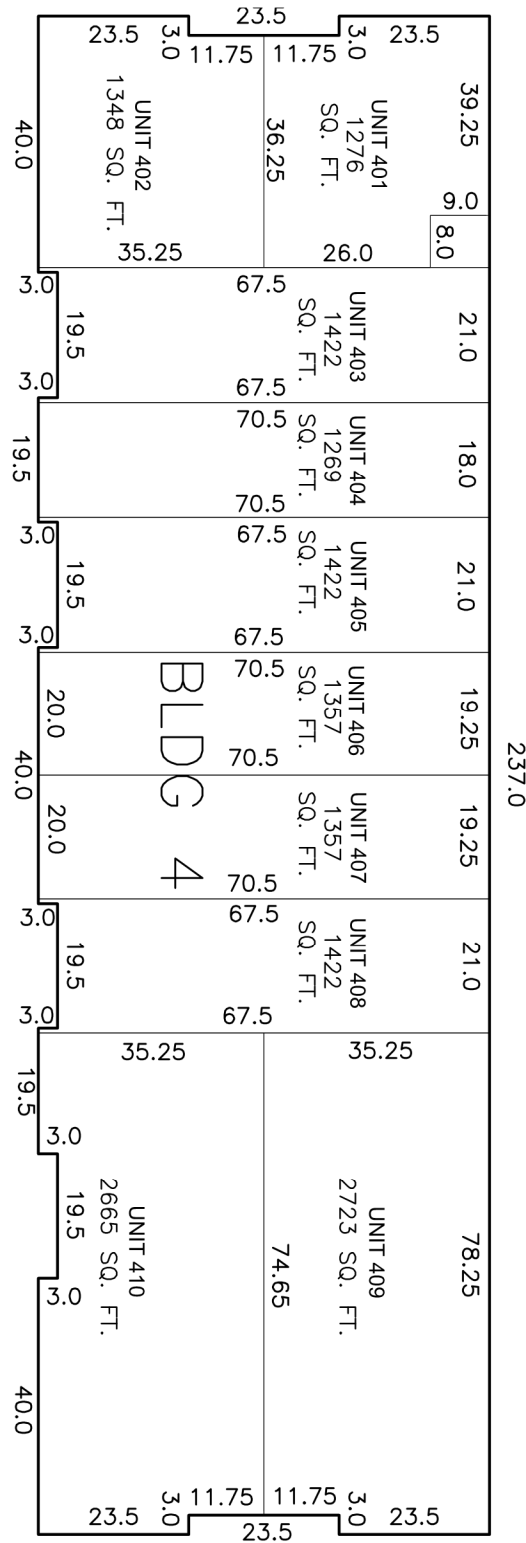
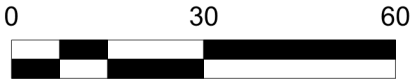
HAZELWOOD, PHASE 6, LOT 52-A, LOT 52-B,
LOT 52-C, & LOT 52-D, BLOCK M

CONDO PLAT

ABRAM DASHNER
RPLS, LLC

abe@rpls5901.com
512-244-3395
TBPLS FIRM NO. 10194420

RONALD REAGAN CROSSING CONDOMINIUMS



REVISED: 6/20/2022

CHECKED BY: AD	
JOB NUMBER: 174-05	ISSUE DATE: 05/18/2022
SHEET: 8 OF 10	

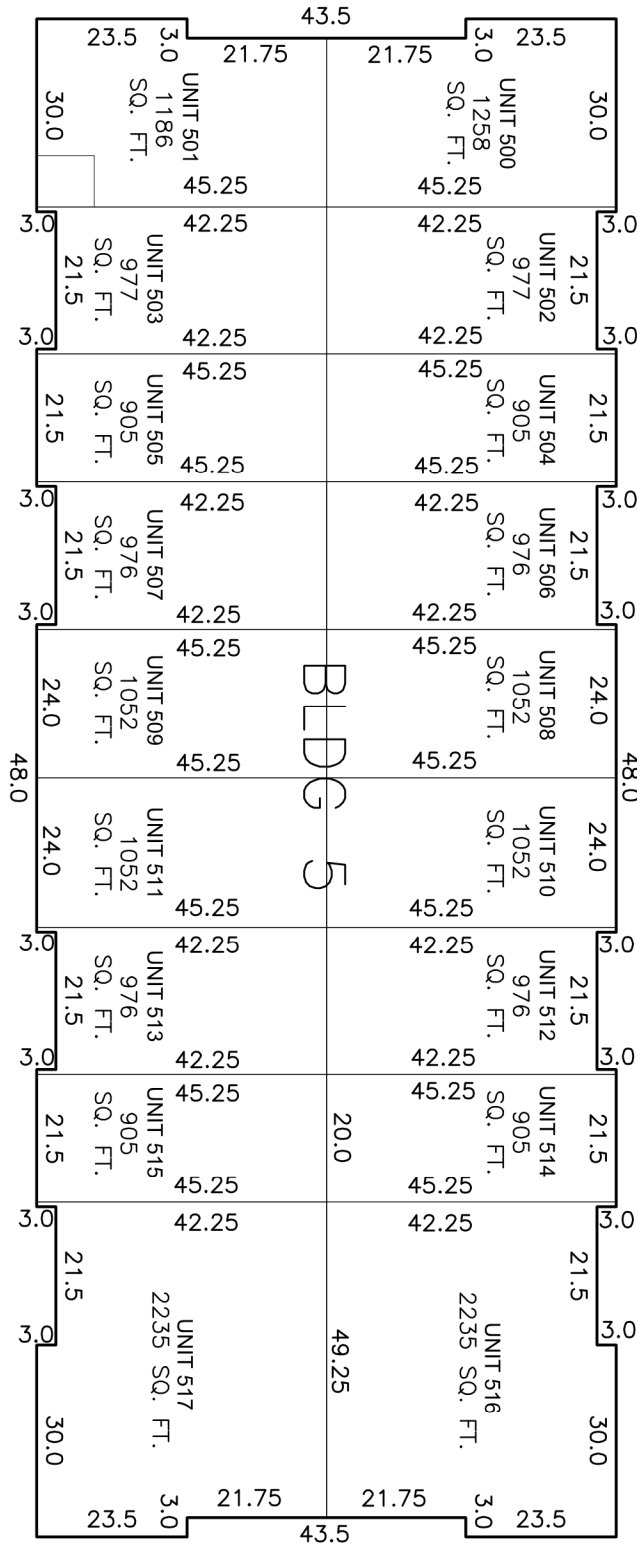
HAZELWOOD, PHASE 6, LOT 52-A, LOT 52-B,
LOT 52-C, & LOT 52-D, BLOCK M

CONDO PLAT

ABRAM DASHNER
RPLS, LLC

abe@rpls5901.com
512-244-3395
TBPLS FIRM NO. 10194420

RONALD REAGAN CROSSING CONDOMINIUMS



REVISED: 6/20/2022

CHECKED BY: AD	
JOB NUMBER: 174-05	ISSUE DATE: 05/18/2022
SHEET: 9 OF 10	

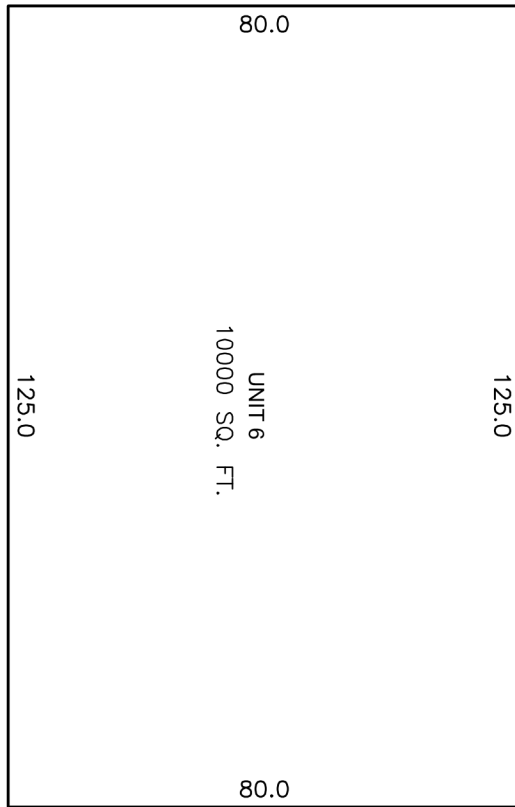
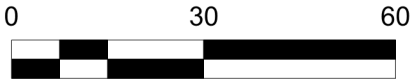
HAZELWOOD, PHASE 6, LOT 52-A, LOT 52-B,
LOT 52-C, & LOT 52-D, BLOCK M

CONDO PLAT

ABRAM DASHNER
RPLS, LLC

abe@rpls5901.com
512-244-3395
TBPLS FIRM NO. 10194420

RONALD REAGAN CROSSING CONDOMINIUMS



REVISED: 6/20/2022

CHECKED BY: AD		HAZELWOOD, PHASE 6, LOT 52-A, LOT 52-B, LOT 52-C, & LOT 52-D, BLOCK M	ABRAM DASHNER RPLS, LLC
JOB NUMBER: 174-05	ISSUE DATE: 05/18/2022		
SHEET: 10 OF 10		CONDO PLAT	abe@rpls5901.com 512-244-3395 TBPLS FIRM NO. 10194420