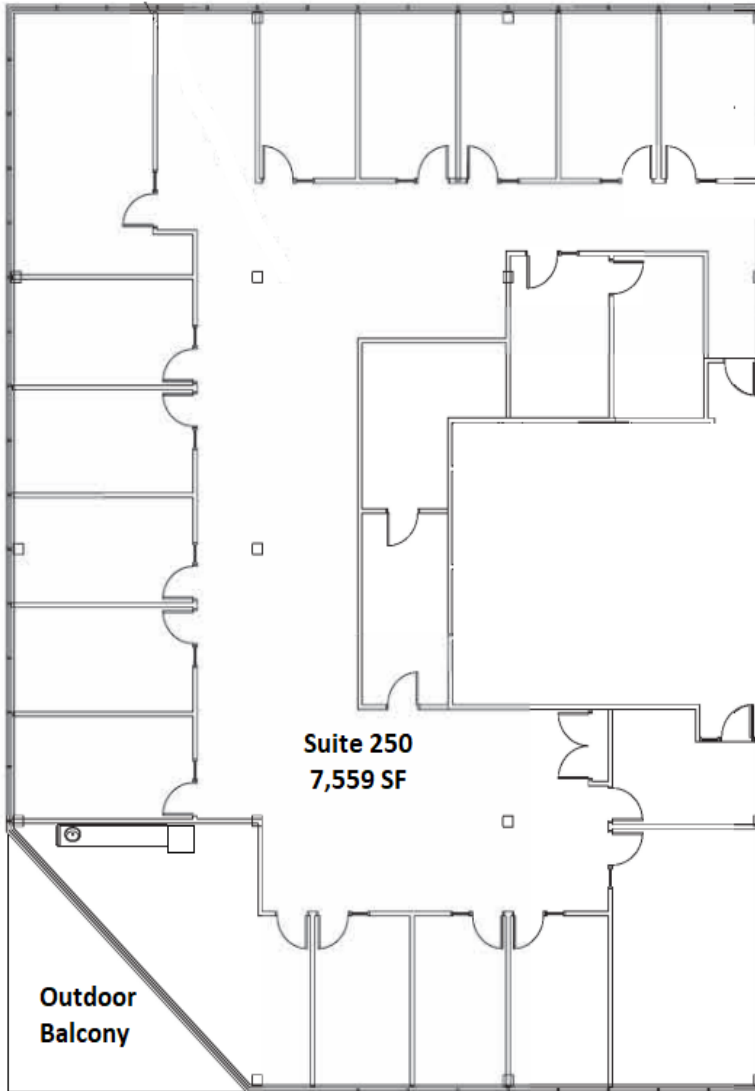


# SUITE 250 | 7,559 SF

950 WARRENVILLE RD \ LISLE, IL



## SPACE NOTES

- New Ownership and Management
- Up to 42,064 SF available for lease
- Building and Monument Signage Available
- Ready to go Office Spaces with New LED Lights
- Furniture available in select suites



**RYAN MOEN**

630.480.6346

[RMoen@VersaRES.com](mailto:RMoen@VersaRES.com)

**JOHN MILLNER**

630.480.6342

[JMillner@VersaRES.com](mailto:JMillner@VersaRES.com)

**1 MID AMERICA PLAZA, 3RD FLOOR  
OAKBROOK TERRACE, IL 60181  
630.480.6413**

EXCLUSIVELY LISTED BY

**VERSA**  
REAL ESTATE SERVICES