



**FOR
LEASE**

1,801 SF
AVAILABLE

291, unit C5
Woodlawn Road West

Guelph, Ontario



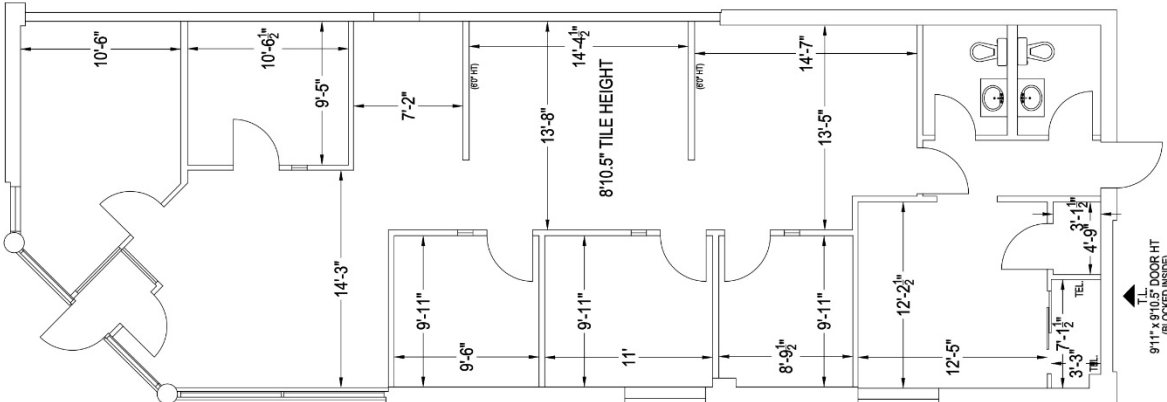
**CUSHMAN &
WAKEFIELD**
Waterloo Region



On-site Parking

FEATURES

- Located on Woodlawn Rd W, near Silvercreek Pkwy N
- 1801 sq ft office space in busy plaza
- Great signage opportunity
- Front and rear access man doors
- Open on-site parking
- Zoning allows for many uses
- Immediate possession
- Could be converted to light industrial or service commercial



1,801 sf of professional office space

UNIT HIGHLIGHTS

UNIT C5 LEASE RATE

\$14.95/SQ FT Net

UNIT C5 AVAILABILITY

1,801 SQ FT

ADDITIONAL RENT

\$12.01/SQ FT + Utils.

ZONING

SC.2-2

POSSESSION

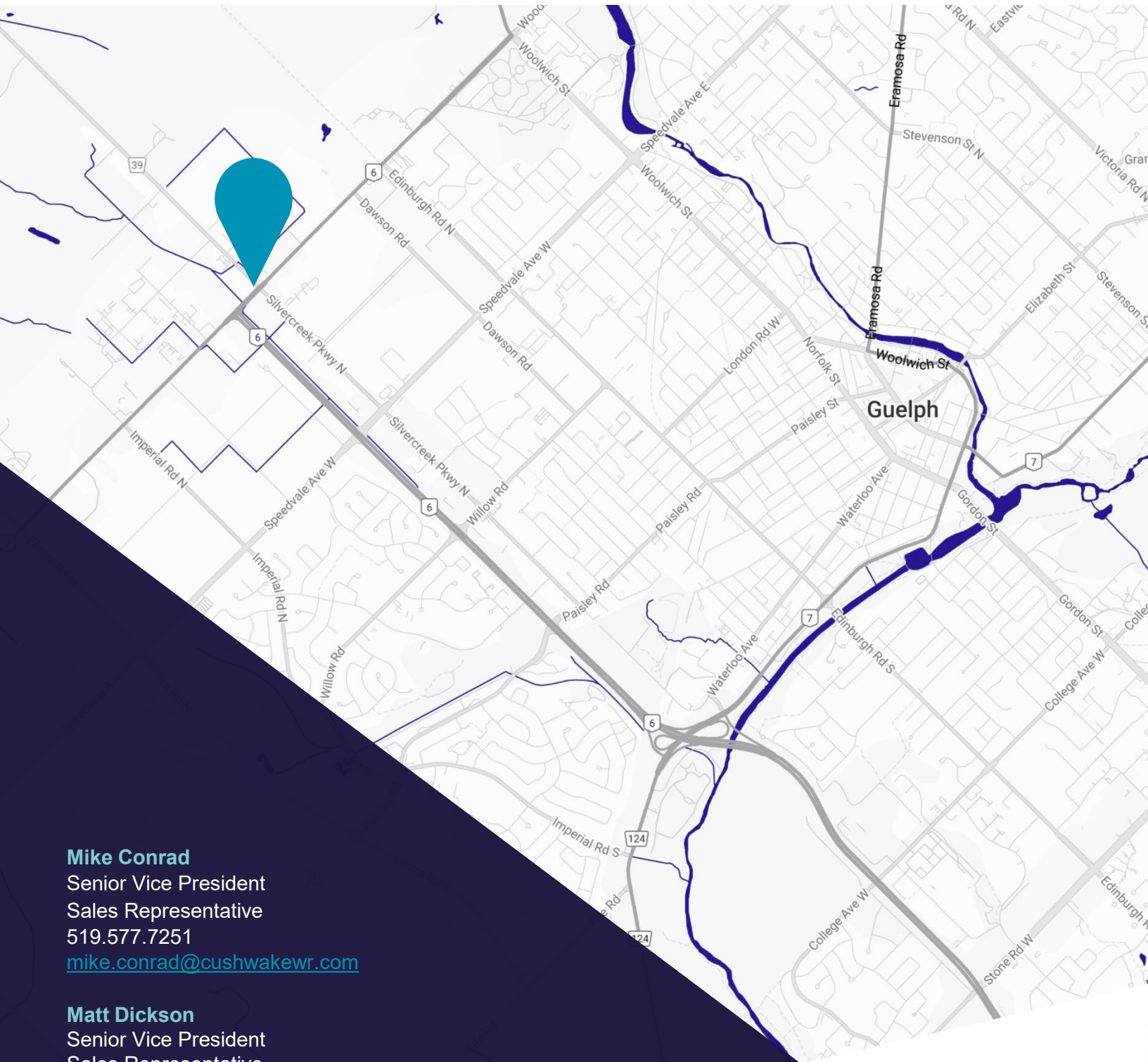
December 1, 2026

LOCATION

On Woodlawn Rd W,
near Silvercreek Pkwy N



©2025 Cushman & Wakefield. All rights reserved. The information contained in this communication is strictly confidential. This information has been obtained from sources believed to be reliable but has not been verified. NO WARRANTY OR REPRESENTATION, EXPRESS OR IMPLIED, IS MADE AS TO THE CONDITION OF THE PROPERTY (OR PROPERTIES) REFERENCED HEREIN OR AS TO THE ACCURACY OR COMPLETENESS OF THE INFORMATION CONTAINED HEREIN, AND SAME IS SUBMITTED SUBJECT TO ERRORS, OMISSIONS, CHANGE OF PRICE, RENTAL OR OTHER CONDITIONS, WITHDRAWAL WITHOUT NOTICE, AND TO ANY SPECIAL LISTING CONDITIONS IMPOSED BY THE PROPERTY OWNER(S). ANY PROJECTIONS, OPINIONS OR ESTIMATES ARE SUBJECT TO UNCERTAINTY AND DO NOT SIGNIFY CURRENT OR FUTURE PROPERTY PERFORMANCE.



Mike Conrad

Senior Vice President

Sales Representative

519.577.7251

mike.conrad@cushwakewr.com

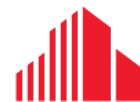
Matt Dickson

Senior Vice President

Sales Representative

519.577.9826

matt.dickson@cushwakewr.com



**CUSHMAN &
WAKEFIELD**
Waterloo Region