

FOR LEASE

DALLAS, TEXAS

921 N RIVERFRONT BLVD

3,323 SF AVAILABLE



BUILDING OVERVIEW

921 North Riverfront is front and center in the Design District, an eclectic and vibrant live-work-play community in a highly centralized location. In recent years, the Design District has sprung new restaurants, cafes, and apartment buildings around the home-decor showrooms and warehouses that have been a fixture in the neighborhood for decades.

AVAILABLE

3,323 SF

Suite 650: 1,357 SF

Suite 700: 1,966 SF

CONDITION

Luxuriously Creative Ambiance, Retail Glass Storefronts, Large Windows, Concrete Floors, Vaulted Ceilings, and Refined Finishes

USE

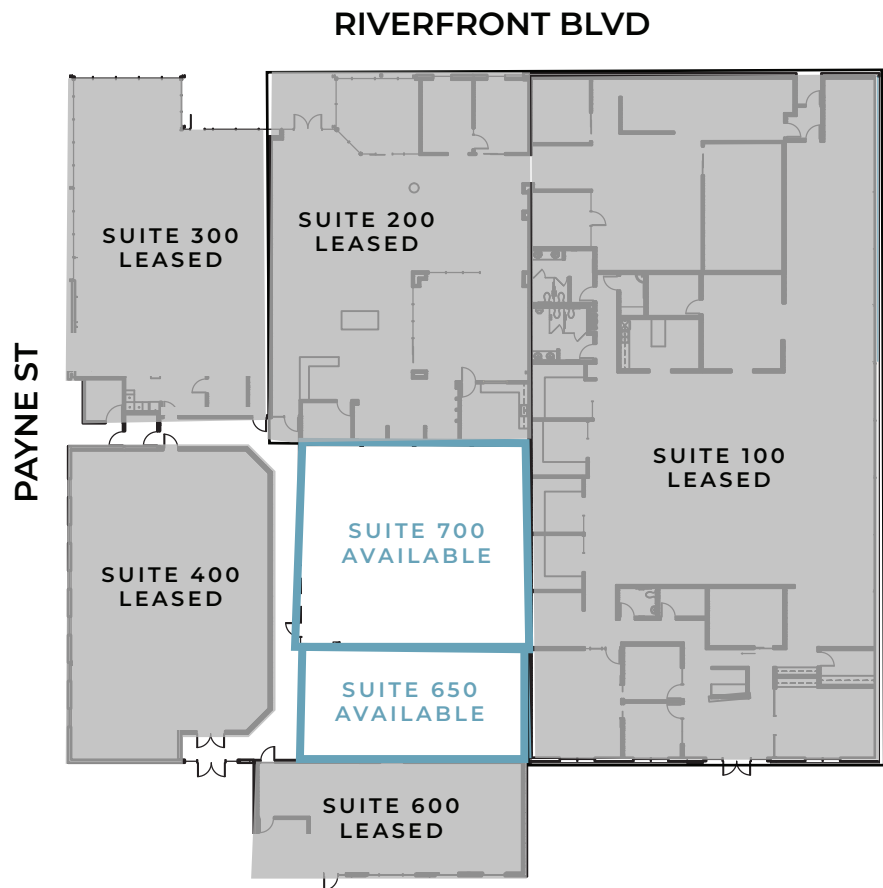
Office / Showroom / Retail

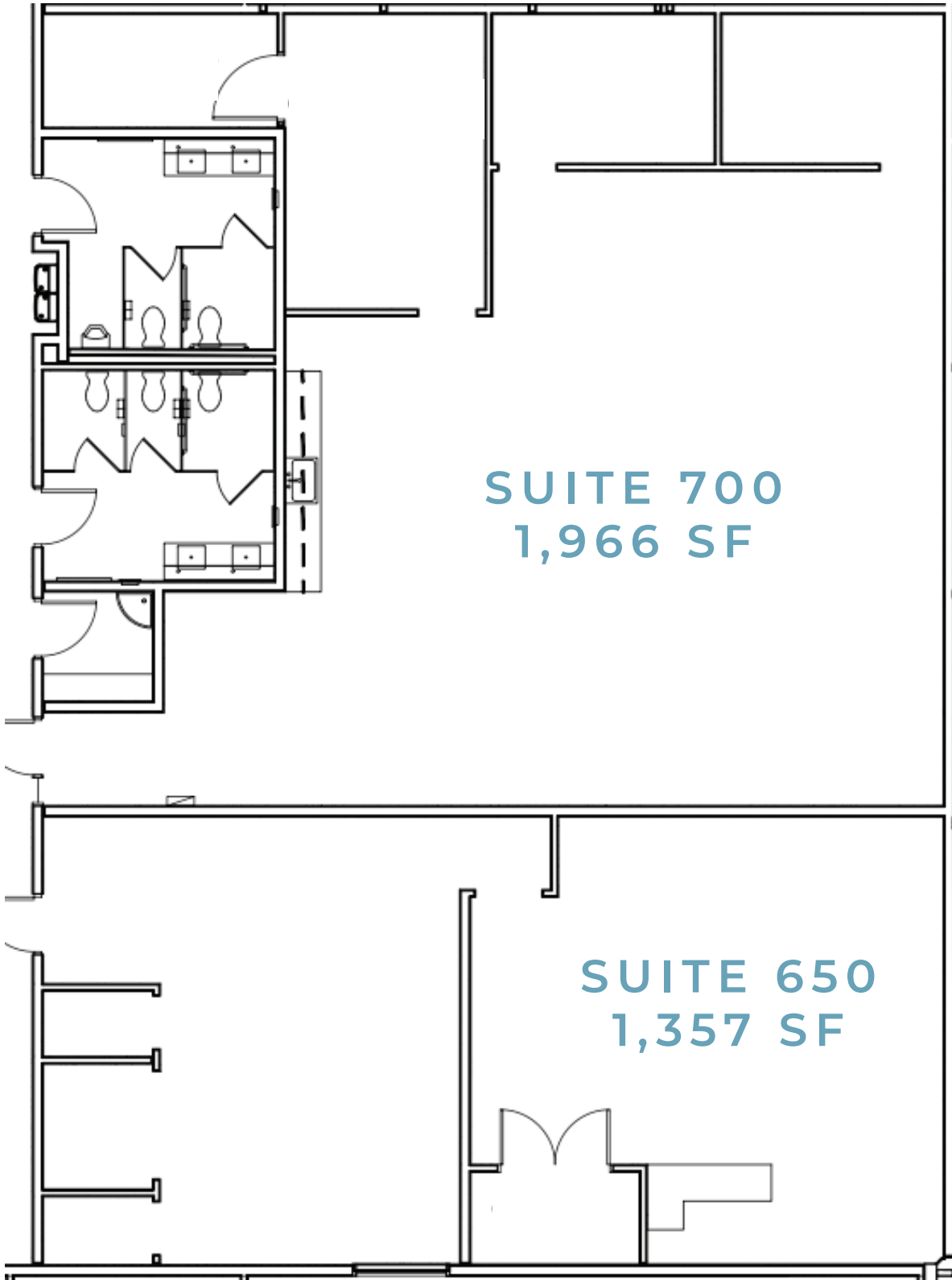
PARKING

3.63/1,000 SF; 100 Dedicated Parking Spaces in Gated Lot

SIGNAGE

Riverfront Signage Available





SUITE 700
1,966 SF

SUITE 650
1,357 SF