

LINK M#2

PROCURING
BROKER BONUS
\$1.00/SF
CALL FOR DETAILS

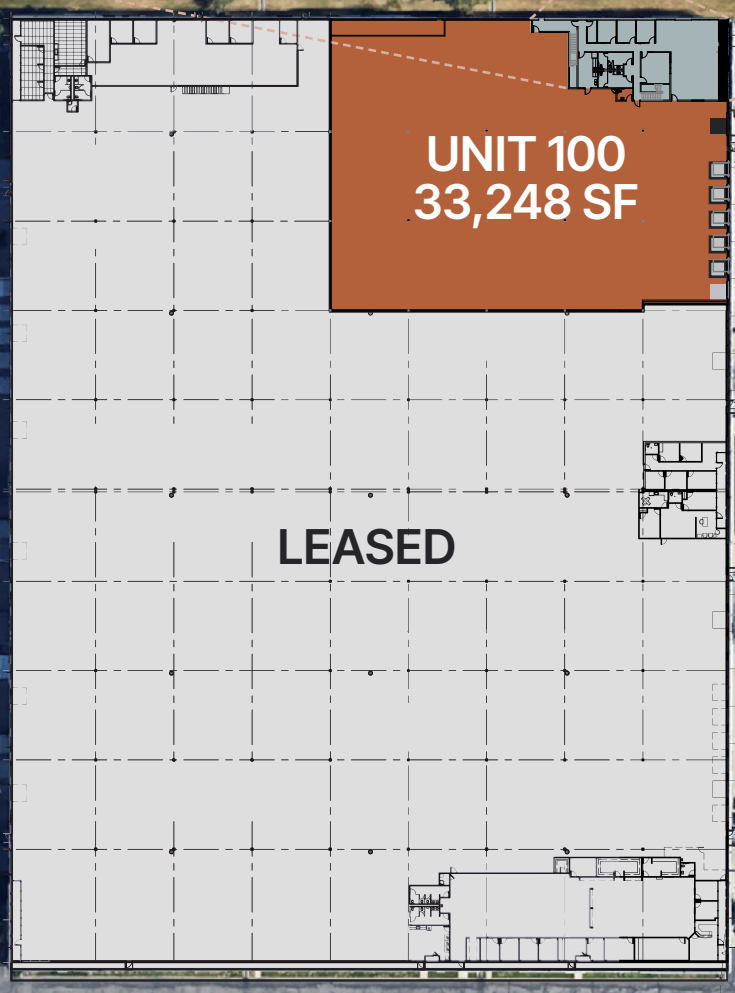
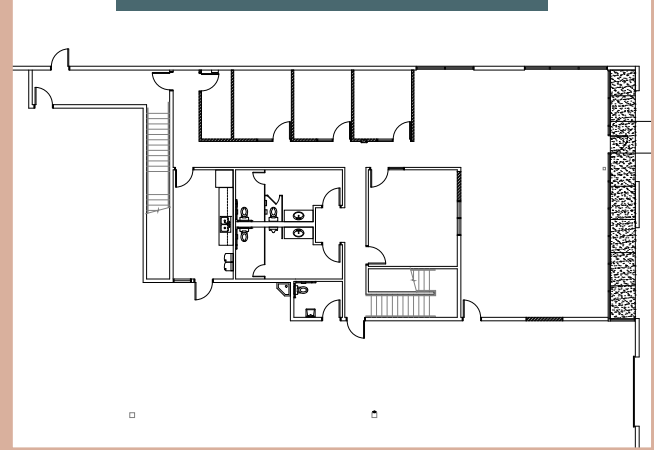
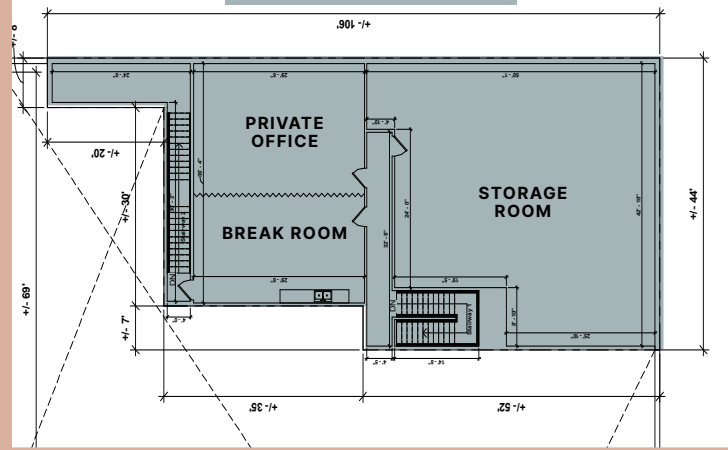
33,248 SF
For Lease

SPECIFICATIONS

Premises	33,248 SF Ground Level	Loading	Six (6) dock high doors (9'x10') equipped with bumpers, seals, and dock lights.	Sprinklered	ESFR
	3,410 SF Mezzanine (not included in leasable SF)		- Five (5) equipped with mechanical pit levelers.	Lighting	Fluorescent and LED
	± 28,186 SF Warehouse		One (1) ground level door (12 x 14)	Access	Excellent Access to Bangerter Highway, I-215, I-15, I-80, & SR-201
	± 6,142 SF Total Office	Power	400 Amps 277/408V 3 Phase		Near Salt Lake City's Union Pacific Intermodal Rail Facility
	± 4,490 SF Total Office	Clear Height	28'	Cooling	Warehouse space is swamp cooled
	± 3,410 SF Main Level Office	Type	Concrete tilt construction		
	± 1,080 SF Mezzanine Office				

MEZZANINE

GROUND LEVEL OFFICE



UNIT 100
33,248 SF

LEASED

- ONE (1) GROUND LEVEL DOOR**
- FIVE (5) DOCK HIGH DOORS EQUIPPED WITH BUMPERS, SEALS, DOCK LIGHTS, AND MECHANICAL PIT LEVELERS**
- ONE (1) DOCK HIGH DOOR EQUIPPED WITH BUMPERS, SEALS, AND DOCK LIGHTS**

LOCAL ACCESS

BANGERTER HIGHWAY

3 Minutes

I-80

4 Minutes

I-15

6 Minutes

SR-201

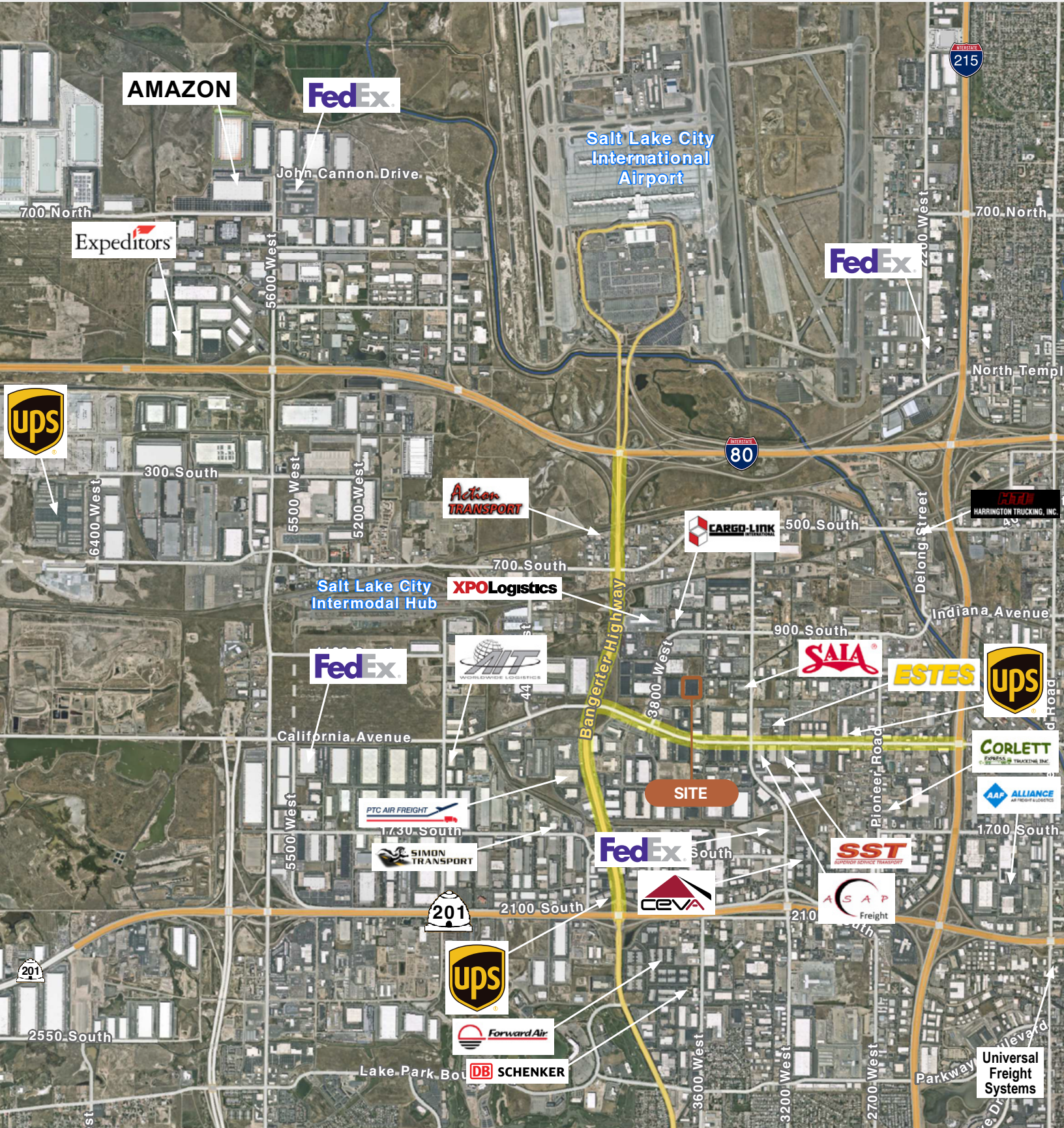
4 Minutes

I-215

4 Minutes

SALT LAKE CITY INTERNATIONAL AIRPORT

6 Minutes



CONTACT INFORMATION

1136 S. 3600 W., Unit 100
Salt Lake City, UT 84104

Jeff Heaton, SIOR

jheaton@newmarkmw.com
t 801-578-5539

Eli Priest

epriest@newmarkmw.com
t 801-746-4746



**FULL SERVICE
COMMERCIAL REAL ESTATE**

376 E. 400 S., Suite 120
Salt Lake City, UT 84111
Office 801-578-5555
www.newmarkmw.com

This is not an offer or acceptance of an offer to lease space. A lease will only be offered or made in a written agreement signed by landlord.
No representation or warranty of any kind is made by landlord unless set forth in a written definitive lease executed by the landlord.